

Converting Colors

Hex(C3B5AC)

Have a look what the booklet for
Hex(C3B5AC) contains.

Hex(C3B5AC)	3
<i>Conversions</i>	4
<i>Details</i>	6
<i>Harmonies</i>	11
<i>Previews</i>	23
<i>Color Blindness Simulation</i>	26
<i>CSS Examples</i>	29

Color

Hex(C3B5AC)

Conversions

Conversions Part 1

Format	Color
Hex	C3B5AC
RGB	195, 181, 172
RGB Percent	76%, 71%, 67%
CMY	0.2353, 0.2902, 0.3255
CMYK	0.00, 0.07, 0.12, 0.24
HSL	23°, 16%, 72%
HSV	23°, 12%, 76%
XYZ	46.4759, 47.6284, 45.7734
YIQ	184.1600, 11.2330, 0.1690

Conversions

Conversions Part 2

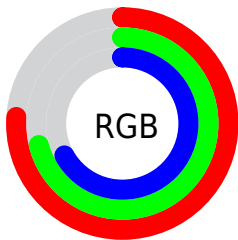
Format	Color
RYB	195, 187, 172
Decimal	12826028
CIELab	74.59, 3.44, 6.37
CIELCh	75, 7.235, 61.622
Yxy	47.6284, 0.3323, 0.3405
Android (android.graphics.Color)	4291016108 (0xFFC3B5AC)
YUV	184.1600, -5.9949, 9.5067
Hunter-Lab	69.0133, -0.5653, 8.9850

Details

The Hex color **C3B5AC** is a light color, and the websafe version is hex **CCCCCC**. A complement of this color would be **ACBAC3**, and the grayscale version is **B8B8B8**.

A 20% lighter version of the original color is **FCEDE3**, and **8D8078** is the 20% darker color. If you saturate the color by 10%, you get **C3A999**, and if you desaturate by 10%, it is **C3C1C0**.

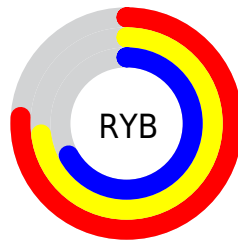
Distribution



Red (76%)

Green (71%)

Blue (67%)



Red (76%)

Yellow (73%)

Blue (67%)

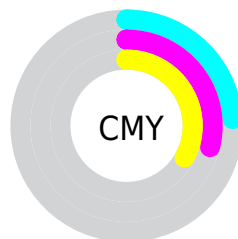


Cyan (0%)

Magenta (7%)

Yellow (12%)

Black (24%)



Cyan (24%)

Magenta (29%)

Yellow (33%)

Brightness & Saturation Gradients

These gradients show how the Hex color C3B5AC changes by changing the brightness by 10 percent. The first figure shows a shift by +10% for each color and the second figure -10%.

Similar to the brightness gradients but the following saturation gradients show a change of the Hex color C3B5AC by changing the saturation by 10% instead.

 C3B5AC

 C3B5AC

FFFFFF

 A89A91

 FCEDE3

 8D8078

 74675F

 5B4F47

 433831

 2D231C

 190D01

 000000

 C3B5AC

 C3B5AC

 C3A999

 C3C1C0

 C39D85

 C3CDD3

 C39172

 C3D9E7

 C3865E

 C3E4FA

 C37A4B

 C3F0FF

 C36E37

 C3FCFF

 C36224

 C3FFFF

 C35610

 C34C00

Harmonies

Analogous

The Analogous color harmony consists of three colors that are next to each other on the color wheel.



C6B4B1



C3B5AC



BDB7AA

Triad

The Triadic color harmony groups three colors that are evenly spaced from another and form a triangle on the color wheel.



C3B5AC



A9BCB8



B9B6C3

Complementary

The Complementary color scheme is a pair of colors which are on the opposite of each other on the color wheel.



C3B5AC



ACBAC3

Split Complementary

Split-complementary colors differ from the complementary color scheme. The scheme consists of three colors, the original color and two neighbors of the complement color.



B1B8C5



C3B5AC



A7BBBE

Square

The Square scheme is like the rectangle color scheme, but the four colors are evenly spaced on the color wheel.



C3B5AC



AEBBB1



ABBAC3



C1B4BE

Rectangle

The Rectangle color scheme consists of four colors that form a rectangle on the color wheel.



C3B5AC



B8B9AB



ABBAC3



B7B6C4

Sweetspot

The Sweet Spot groups the original color and five complimentary colors.



C3B5AC



FCF6F2



C3ACBA



807C79



000000



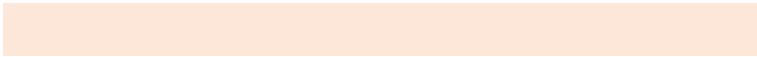
808080

Same Dimension

The Same Dimension uses a secret algorithm to generate beautiful new colors.



C3B5AC



FCE7D9



C3C0AC



615B57



A13F00



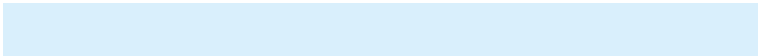
210D00

Inverse Universe

The Inverse Universe completely reimagines the original color for something new.



ACBAC3



D9EFC



ACAFC3



575D61



0062A1



001421

Previews

White Background



This preview shows how the Hex color C3B5AC looks on a white background.

Color Contrast Check

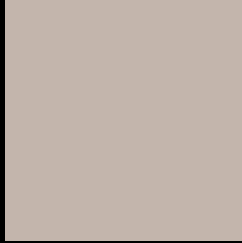
Large Text (above 18pt) WCAG AA × Fail

Any Text WCAG AA × Fail

Large Text (above 18pt) WCAG AAA × Fail

Any Text WCAG AAA × Fail

Black Background



This preview shows how the Hex color C3B5AC looks on a black background.

Color Contrast Check

Large Text (above 18pt) WCAG AA ✓ Pass

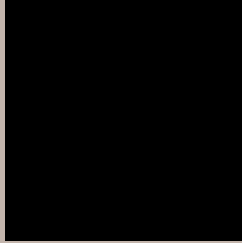
Any Text WCAG AA ✓ Pass

Large Text (above 18pt) WCAG AAA ✓ Pass

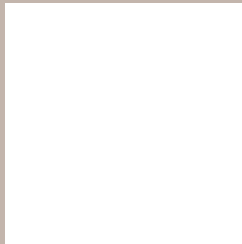
Any Text WCAG AAA ✓ Pass

If you want to check with other color combinations, try the [Color Contrast Checker](#).

Hex C3B5AC Background



This preview shows how black text looks on a background with the Hex color C3B5AC.

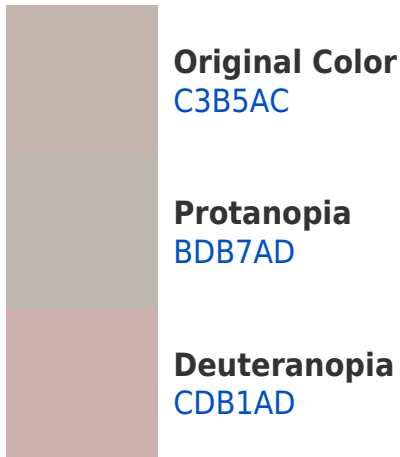


This preview shows how white text looks on a background with the Hex color C3B5AC.

Color Blindness Simulation

Color vision deficiency is a very complex topic, and I could not describe the different causes any better than Wikipedia does, so if you want to learn more, you should check out their [article about color blindness](#).

Dichromacy





Tritanopia
C6B2C0

Trichromacy



Original Color
C3B5AC

Protanomaly
BFB6AD

Deuteranomaly
C9B2AD

Tritanomaly
C5B3B9

Monochromacy



Original Color
C3B5AC

Achromatopsia
B8B8B8

Achromatomaly
BCB7B4

CSS Examples

Text

The CSS property to change the color of the text to Hex C3B5AC is called "color". The color property can be set on classes, ids or directly on the HTML element.

This example shows how text in the color #C3B5AC looks like.

```
.text, #text, p{  
    color:#C3B5AC  
}
```

If you want to add a text shadow in that color use the text-shadow property, you can generate a text shadow directly with our [CSS Text Shadow Generator](#).

Here you see how black text with a 4 pixel #C3B5AC colored shadow looks like.

```
.shadow{ text-shadow: 4px 4px 2px #C3B5AC
}
```

Border

The CSS property to change the border of an element to Hex C3B5AC is called "border". The border property can be set on classes, ids or directly on the HTML element.

This example shows the color as border, it can be applied via the CSS property "border" or "border-color".

```
.border, #border, table{ border:4px solid
#C3B5AC }
```

If only the border color should be changed use the property `border-color`.

```
.border{ border-color:#C3B5AC }
```

If you want to add a box shadow in that color use:

Here you see how a box with a 4 pixel #C3B5AC colored shadow looks like.

```
.boxshadow{ -moz-box-shadow:4px 4px 4px  
4px #C3B5AC; -webkit-box-shadow:4px 4px  
4px 4px #C3B5AC; box-shadow:4px 4px 4px  
4px #C3B5AC }
```

Background

The CSS property to change the background color of an element to Hex C3B5AC is called "background". The background property can be set on classes, ids or directly on the HTML element.

```
.background, #background, body{  
background:#C3B5AC }
```

If only the background color should be changed can be used:

```
.background{ background-color:#C3B5AC }
```

This example shows the color as background, it is applied via the CSS property "background".

To optimize and compress your CSS code, you can use our [online CSS compressor and optimizer](#) based on csstidy. If you want to create a linear or radial gradient as background or border, check our [CSS Gradient Generator](#).

Hey! You found this booklet interesting? Support Converting Colors with the new Membership Option!

The pro membership hides all ads, plus gives you double the colors in the color bucket, and more awesome pro features!

[Learn more, Memberships starting at \\$2.50/m!](#)

**Follow me
on Twitter!**

@ConvertingColor