

Converting Colors

Hex(C3B5BA)

Have a look what the booklet for
Hex(C3B5BA) contains.

Hex(C3B5BA)	3
<i>Conversions</i>	4
<i>Details</i>	6
<i>Harmonies</i>	11
<i>Previews</i>	23
<i>Color Blindness Simulation</i>	26
<i>CSS Examples</i>	29

Color

Hex(C3B5BA)

Conversions

Conversions Part 1

Format	Color
Hex	C3B5BA
RGB	195, 181, 186
RGB Percent	76%, 71%, 73%
CMY	0.2353, 0.2902, 0.2706
CMYK	0.00, 0.07, 0.05, 0.24
HSL	339°, 10%, 74%
HSV	339°, 7%, 76%
XYZ	47.8925, 48.1950, 53.2327
YIQ	185.7560, 6.7390, 4.5230

Conversions

Conversions Part 2

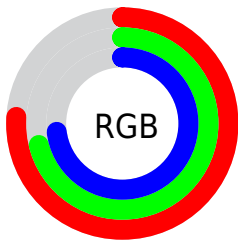
Format	Color
RYB	195, 181, 186
Decimal	12826042
CIELab	74.95, 5.86, -0.75
CIElCh	75, 5.906, 352.705
Yxy	48.1950, 0.3207, 0.3228
Android (android.graphics.Color)	4291016122 (0xFFC3B5BA)
YUV	185.7560, 0.1203, 8.1070
Hunter-Lab	69.4226, 1.6519, 3.1327

Details

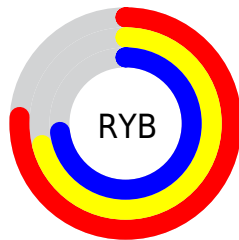
The Hex color **C3B5BA** is a light color, and the websafe version is hex **CCCCCC**. A complement of this color would be **B5C3BE**, and the grayscale version is **BABABA**.

A 20% lighter version of the original color is **FCEDF2**, and **8D8085** is the 20% darker color. If you saturate the color by 10%, you get **C3A2AD**, and if you desaturate by 10%, it is **C3C9C7**.

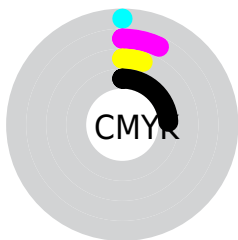
Distribution



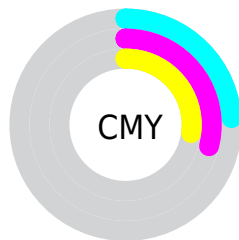
- Red (76%)
- Green (71%)
- Blue (73%)



- Red (76%)
- Yellow (71%)
- Blue (73%)



- Cyan (0%)
- Magenta (7%)
- Yellow (5%)
- Black (24%)



- Cyan (24%)
- Magenta (29%)
- Yellow (27%)

Brightness & Saturation Gradients

These gradients show how the Hex color C3B5BA changes by changing the brightness by 10 percent. The first figure shows a shift by +10% for each color and the second figure -10%.

Similar to the brightness gradients but the following saturation gradients show a change of the Hex color C3B5BA by changing the saturation by 10% instead.

 C3B5BA

FFFFFF

 FCEDF2

 C3B5BA

 A89A9F

 8D8085

 74676C

 5B4F54

 44383C

 2D2327

 190D12

 000000

 C3B5BA

 C3B5BA

 C3A2AD

 C3C9C7

 C38EA1

 C3DCD3

 C37B94

 C3F0E0

 C36788

 C3FFEC

 C3547B

 C3FFF9

 C3406F

 C3FFFF

 C32D62

 C31956

 C30649

Harmonies

Analogous

The Analogous color harmony consists of three colors that are next to each other on the color wheel.



BEB6BF



C3B5BA



C5B5B4

Triad

The Triadic color harmony groups three colors that are evenly spaced from another and form a triangle on the color wheel.



C3B5BA



B9B9AE



ADBBC1

Complementary

The Complementary color scheme is a pair of colors which are on the opposite of each other on the color wheel.



C3B5BA



B5C3BE

Split Complementary

Split-complementary colors differ from the complementary color scheme. The scheme consists of three colors, the original color and two neighbors of the complement color.



ABBCBC



C3B5BA



B2BBB2

Square

The Square scheme is like the rectangle color scheme, but the four colors are evenly spaced on the color wheel.



C3B5BA



BFB8AE



ADBCB7



B2B9C3

Rectangle

The Rectangle color scheme consists of four colors that form a rectangle on the color wheel.



C3B5BA



C4B6B1



ADBC B7



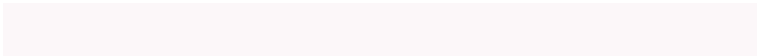
ACBBC0

Sweetspot

The Sweet Spot groups the original color and five complimentary colors.



C3B5BA



FCF7F9



BEB5C3



807D7E



000000



808080

Same Dimension

The Same Dimension uses a secret algorithm to generate beautiful new colors.



C3B5BA



FCE6EE



C3B7B5



61575B



A10039



21000C

Inverse Universe

The Inverse Universe completely reimagines the original color for something new.



C3B5BA



FCE6EE



B5C1C3



61575B



A10039



21000C

Previews

White Background



This preview shows how the Hex color C3B5BA looks on a white background.

Color Contrast Check

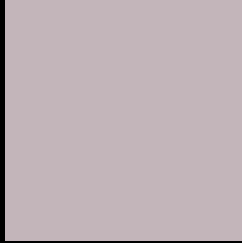
Large Text (above 18pt) WCAG AA × Fail

Any Text WCAG AA × Fail

Large Text (above 18pt) WCAG AAA × Fail

Any Text WCAG AAA × Fail

Black Background



This preview shows how the Hex color C3B5BA looks on a black background.

Color Contrast Check

Large Text (above 18pt) WCAG AA ✓ Pass

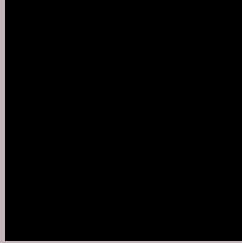
Any Text WCAG AA ✓ Pass

Large Text (above 18pt) WCAG AAA ✓ Pass

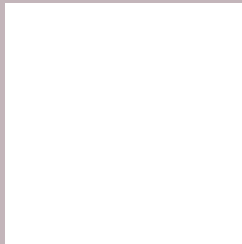
Any Text WCAG AAA ✓ Pass

If you want to check with other color combinations, try the [Color Contrast Checker](#).

Hex C3B5BA Background



This preview shows how black text looks on a background with the Hex color C3B5BA.



This preview shows how white text looks on a background with the Hex color C3B5BA.

Color Blindness Simulation

Color vision deficiency is a very complex topic, and I could not describe the different causes any better than Wikipedia does, so if you want to learn more, you should check out their [article about color blindness](#).

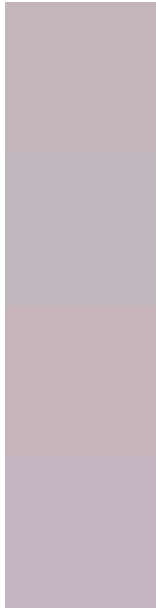
Dichromacy





Tritanopia
C4B4C2

Trichromacy



Original Color
C3B5BA

Protanomaly
BEB7BB

Deuteranomaly
C7B4BA

Tritanomaly
C4B4BF

Monochromacy



Original Color
C3B5BA

Achromatopsia
BABABA

Achromatomaly
BDB8BA

CSS Examples

Text

The CSS property to change the color of the text to Hex C3B5BA is called "color". The color property can be set on classes, ids or directly on the HTML element.

This example shows how text in the color #C3B5BA looks like.

```
.text, #text, p{  
    color:#C3B5BA  
}
```

If you want to add a text shadow in that color use the text-shadow property, you can generate a text shadow directly with our [CSS Text Shadow Generator](#).

Here you see how black text with a 4 pixel #C3B5BA colored shadow looks like.

```
.shadow{ text-shadow: 4px 4px 2px #C3B5BA
}
```

Border

The CSS property to change the border of an element to Hex C3B5BA is called "border". The border property can be set on classes, ids or directly on the HTML element.

This example shows the color as border, it can be applied via the CSS property "border" or "border-color".

```
.border, #border, table{ border:4px solid
#C3B5BA }
```

If only the border color should be changed use the property `border-color`.

```
.border{ border-color:#C3B5BA }
```

If you want to add a box shadow in that color use:

Here you see how a box with a 4 pixel #C3B5BA colored shadow looks like.

```
.boxshadow{ -moz-box-shadow:4px 4px 4px  
4px #C3B5BA; -webkit-box-shadow:4px 4px  
4px 4px #C3B5BA; box-shadow:4px 4px 4px  
4px #C3B5BA }
```

Background

The CSS property to change the background color of an element to Hex C3B5BA is called "background". The background property can be set on classes, ids or directly on the HTML element.

```
.background, #background, body{  
background:#C3B5BA }
```

If only the background color should be changed can be used:

```
.background{ background-color:#C3B5BA }
```

This example shows the color as background, it is applied via the CSS property "background".

To optimize and compress your CSS code, you can use our [online CSS compressor and optimizer](#) based on csstidy. If you want to create a linear or radial gradient as background or border, check our [CSS Gradient Generator](#).

Hey! You found this booklet interesting? Support Converting Colors with the new Membership Option!

The pro membership hides all ads, plus gives you double the colors in the color bucket, and more awesome pro features!

[Learn more, Memberships starting at \\$2.50/m!](#)

**Follow me
on Twitter!**

@ConvertingColor