

Converting Colors

Hex(C47977)

Have a look what the booklet for
Hex(C47977) contains.

| | |
|------------------------------------------------|----|
| Hex(C47977) | 3 |
| <i>Conversions</i> | 4 |
| <i>Details</i> | 6 |
| <i>Harmonies</i> | 11 |
| <i>Previews</i> | 23 |
| <i>Color Blindness Simulation</i> | 26 |
| <i>CSS Examples</i> | 29 |

Color

Hex(C47977)

Conversions

Conversions Part 1

| Format | Color |
|-------------|----------------------------|
| Hex | C47977 |
| RGB | 196, 121, 119 |
| RGB Percent | 77%, 47%, 47% |
| CMY | 0.2314, 0.5255, 0.5333 |
| CMYK | 0.00, 0.38, 0.39, 0.23 |
| HSL | 2°, 39%, 62% |
| HSV | 2°, 39%, 77% |
| XYZ | 32.9321, 26.7424, 20.8789 |
| YIQ | 143.1970, 45.3420, 15.2780 |

Conversions

Conversions Part 2

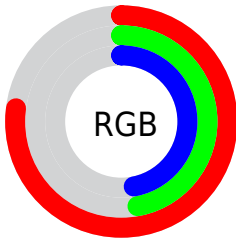
| Format | Color |
|-------------------------------------|--------------------------------|
| R_{YB} | 196, 121, 119 |
| Decimal | 12876151 |
| CIE Lab | 58.74, 29.05, 13.52 |
| CIE LCh | 59, 32.040, 24.965 |
| Yxy | 26.7424, 0.4088, 0.3320 |
| Android (android.graphics.Color) | 4291066231 (0xFFC47977) |
| YUV | 143.1970, -11.9291, 46.3082 |
| Hunter-Lab | 51.7131, 23.1751, 12.2612 |

Details

The Hex color **C47977** is a dark color, and the websafe version is hex **CC6666**. A complement of this color would be **77C2C4**, and the grayscale version is **8F8F8F**.

A 20% lighter version of the original color is **FFAEAB**, and **8C4747** is the 20% darker color. If you saturate the color by 10%, you get **C46663**, and if you desaturate by 10%, it is **C48C8B**.

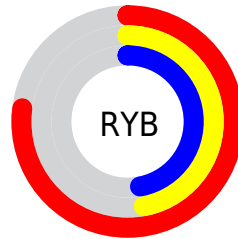
Distribution



Red (77%)

Green (47%)

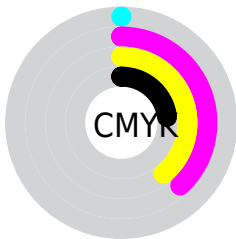
Blue (47%)



Red (77%)

Yellow (47%)

Blue (47%)

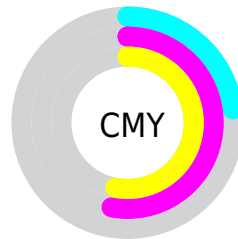


Cyan (0%)

Magenta (38%)

Yellow (39%)

Black (23%)



Cyan (23%)

Magenta (53%)

Yellow (53%)

Brightness & Saturation Gradients

These gradients show how the Hex color C47977 changes by changing the brightness by 10 percent. The first figure shows a shift by +10% for each color and the second figure -10%.

Similar to the brightness gradients but the following saturation gradients show a change of the Hex color C47977 by changing the saturation by 10% instead.

 C47977

 C47977

FFFFFF

 A8605E

 FFAEAB

 8C4747

 FFCAC6

 702F30

 FFE6E2

 56171B

 3D0001

 250001

 000000

 C47977

 C47977

 C46663

 C48C8B

 C45350

 C49F9E

 C4403C

 C4B2B2

 C42D29

 C4C5C5

 C41A15

 C4D8D9

 C40601

 C4ECED

 C40500

 C4FFFF

Harmonies

Analogous

The Analogous color harmony consists of three colors that are next to each other on the color wheel.



C07893



C47977



BA8060

Triad

The Triadic color harmony groups three colors that are evenly spaced from another and form a triangle on the color wheel.



C47977



67996C



5D91C5

Complementary

The Complementary color scheme is a pair of colors which are on the opposite of each other on the color wheel.



C47977



77C2C4

Split Complementary

Split-complementary colors differ from the complementary color scheme. The scheme consists of three colors, the original color and two neighbors of the complement color.



2D98BA



C47977



439C87

Square

The Square scheme is like the rectangle color scheme, but the four colors are evenly spaced on the color wheel.



C47977



889359



1F9CA4



8A88C0

Rectangle

The Rectangle color scheme consists of four colors that form a rectangle on the color wheel.



C47977



AC8757



1F9CA4



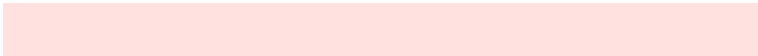
4D94C3

Sweetspot

The Sweet Spot groups the original color and five complimentary colors.



C47977



FFE1E0



C477C3



806E6E



000000



808080

Same Dimension

The Same Dimension uses a secret algorithm to generate beautiful new colors.



C47977



FF8A87



C49F77



615757



A10400



210100

Inverse Universe

The Inverse Universe completely reimagines the original color for something new.



77C2C4



87FCFF



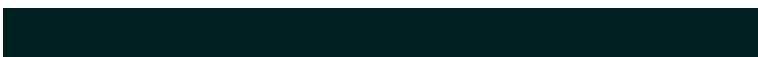
779CC4



576161



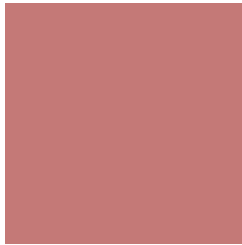
009CA1



002021

Previews

White Background



This preview shows how the Hex color C47977 looks on a white background.

Color Contrast Check

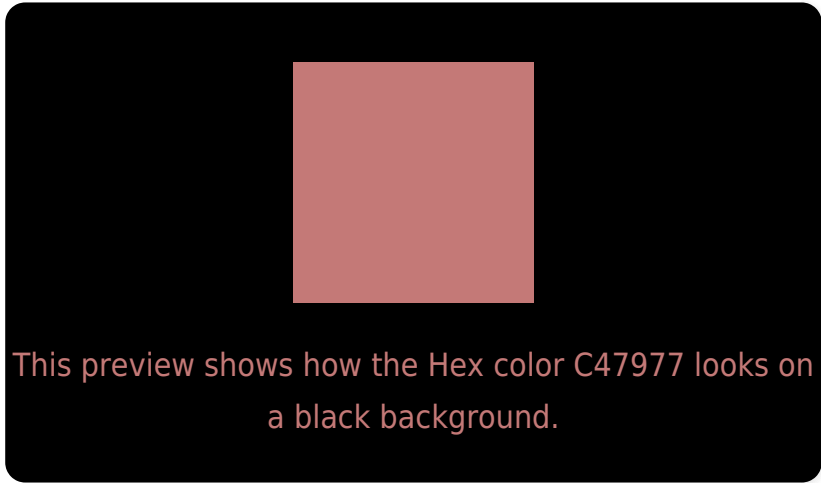
Large Text (above 18pt) WCAG AA ✓ Pass

Any Text WCAG AA × Fail

Large Text (above 18pt) WCAG AAA × Fail

Any Text WCAG AAA × Fail

Black Background



Color Contrast Check

Large Text (above 18pt) WCAG AA ✓ Pass

Any Text WCAG AA ✓ Pass

Large Text (above 18pt) WCAG AAA ✓ Pass

Any Text WCAG AAA × Fail

If you want to check with other color combinations, try the [Color Contrast Checker](#).

Hex C47977 Background



This preview shows how black text looks on a background with the Hex color C47977.

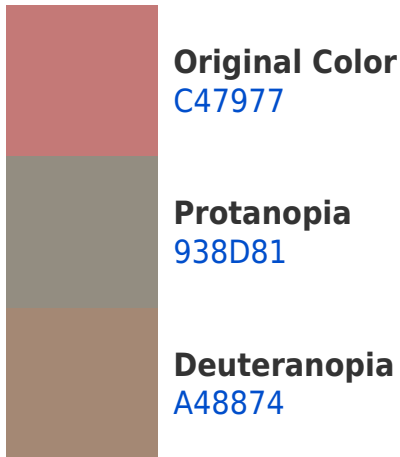


This preview shows how white text looks on a background with the Hex color C47977.

Color Blindness Simulation

Color vision deficiency is a very complex topic, and I could not describe the different causes any better than Wikipedia does, so if you want to learn more, you should check out their [article about color blindness](#).

Dichromacy





Tritanopia
C57880

Trichromacy



Original Color
C47977

Protanomaly
A5867D

Deuteranomaly
B08375

Tritanomaly
C5787D

Monochromacy



Original Color
C47977

Achromatopsia
8F8F8F

Achromatomaly
A28786

CSS Examples

Text

The CSS property to change the color of the text to Hex C47977 is called "color". The color property can be set on classes, ids or directly on the HTML element.

This example shows how text in the color #C47977 looks like.

```
.text, #text, p{  
    color:#C47977  
}
```

If you want to add a text shadow in that color use the text-shadow property, you can generate a text shadow directly with our [CSS Text Shadow Generator](#).

Here you see how black text with a 4 pixel #C47977 colored shadow looks like.

```
.shadow{ text-shadow: 4px 4px 2px #C47977
}
```

Border

The CSS property to change the border of an element to Hex C47977 is called "border". The border property can be set on classes, ids or directly on the HTML element.

This example shows the color as border, it can be applied via the CSS property "border" or "border-color".

```
.border, #border, table{ border:4px solid
#C47977 }
```

If only the border color should be changed use the property `border-color`.

```
.border{ border-color:#C47977 }
```

If you want to add a box shadow in that color use:

Here you see how a box with a 4 pixel #C47977 colored shadow looks like.

```
.boxshadow{ -moz-box-shadow:4px 4px 4px  
4px #C47977; -webkit-box-shadow:4px 4px  
4px 4px #C47977; box-shadow:4px 4px 4px  
4px #C47977 }
```

Background

The CSS property to change the background color of an element to Hex C47977 is called "background". The background property can be set on classes, ids or directly on the HTML element.

```
.background, #background, body{  
background:#C47977 }
```

If only the background color should be changed can be used:

```
.background{ background-color:#C47977 }
```

This example shows the color as background, it is applied via the CSS property "background".

To optimize and compress your CSS code, you can use our [online CSS compressor and optimizer](#) based on csstidy. If you want to create a linear or radial gradient as background or border, check our [CSS Gradient Generator](#).

Hey! You found this booklet interesting? Support Converting Colors with the new Membership Option!

The pro membership hides all ads, plus gives you double the colors in the color bucket, and more awesome pro features!

[Learn more, Memberships starting at \\$2.50/m!](#)

**Follow me
on Twitter!**

@ConvertingColor