

Converting Colors

Hex(C48989)

Have a look what the booklet for
Hex(C48989) contains.

Hex(C48989)	3
<i>Conversions</i>	4
<i>Details</i>	6
<i>Harmonies</i>	11
<i>Previews</i>	23
<i>Color Blindness Simulation</i>	26
<i>CSS Examples</i>	29

Color

Hex(C48989)

Conversions

Conversions Part 1

Format	Color
Hex	C48989
RGB	196, 137, 137
RGB Percent	77%, 54%, 54%
CMY	0.2314, 0.4627, 0.4627
CMYK	0.00, 0.30, 0.30, 0.23
HSL	0°, 33%, 65%
HSV	0°, 30%, 77%
XYZ	36.2260, 31.4332, 27.8248
YIQ	154.6410, 35.1640, 12.5080

Conversions

Conversions Part 2

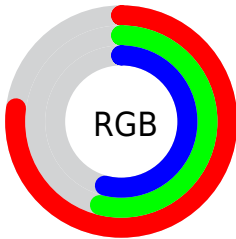
Format	Color
RYB	196, 137, 137
Decimal	12880265
CIELab	62.87, 22.55, 9.07
CIELCh	63, 24.309, 21.903
Yxy	31.4332, 0.3794, 0.3292
Android (android.graphics.Color)	4291070345 (0xFFC48989)
YUV	154.6410, -8.6970, 36.2718
Hunter-Lab	56.0653, 17.2213, 9.8206

Details

The Hex color **C48989** is a light color, and the websafe version is hex **CC9999**. A complement of this color would be **89C4C4**, and the grayscale version is **9B9B9B**.

A 20% lighter version of the original color is **FEBFBE**, and **8D5757** is the 20% darker color. If you saturate the color by 10%, you get **C47575**, and if you desaturate by 10%, it is **C49D9D**.

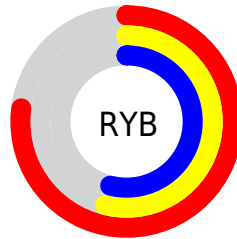
Distribution



Red (77%)

Green (54%)

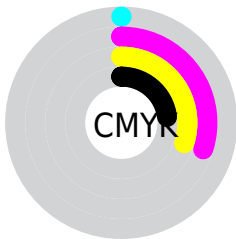
Blue (54%)



Red (77%)

Yellow (54%)

Blue (54%)

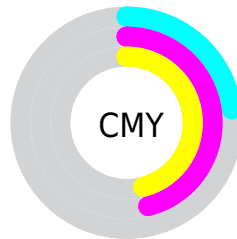


Cyan (0%)

Magenta (30%)

Yellow (30%)

Black (23%)



Cyan (23%)

Magenta (46%)

Yellow (46%)

Brightness & Saturation Gradients

These gradients show how the Hex color C48989 changes by changing the brightness by 10 percent. The first figure shows a shift by +10% for each color and the second figure -10%.

Similar to the brightness gradients but the following saturation gradients show a change of the Hex color C48989 by changing the saturation by 10% instead.

 C48989

 C48989

FFFFFF

 A86F70

 FEBFBE

 8D5757

 FFDBDA

 723F40

 FFF7F7

 58282A

 3F1216

 2A0000

 000000

 C48989

 C48989

 C47575

 C49D9D

 C46262

 C4B0B0

 C44E4E

 C4C4C4

 C43B3B

 C4D7D7

 C42727

 C4EBEB

 C41313

 C4FFFF

 C40000

Harmonies

Analogous

The Analogous color harmony consists of three colors that are next to each other on the color wheel.



BF899F



C48989



BD8E77

Triad

The Triadic color harmony groups three colors that are evenly spaced from another and form a triangle on the color wheel.



C48989



7EA17D



759CC2

Complementary

The Complementary color scheme is a pair of colors which are on the opposite of each other on the color wheel.



C48989



89C4C4

Split Complementary

Split-complementary colors differ from the complementary color scheme. The scheme consists of three colors, the original color and two neighbors of the complement color.



5DA1B9



C48989



67A491

Square

The Square scheme is like the rectangle color scheme, but the four colors are evenly spaced on the color wheel.



C48989



979C70



58A4A7



9495C0

Rectangle

The Rectangle color scheme consists of four colors that form a rectangle on the color wheel.



C48989



B39270



58A4A7



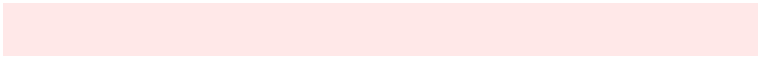
6C9EC1

Sweetspot

The Sweet Spot groups the original color and five complimentary colors.



C48989



FFE8E8



C489C4



807171



000000



808080

Same Dimension

The Same Dimension uses a secret algorithm to generate beautiful new colors.



C48989



FFA3A3



C4A789



615757



A10000



210000

Inverse Universe

The Inverse Universe completely reimagines the original color for something new.



89C4C4



A3FFFF



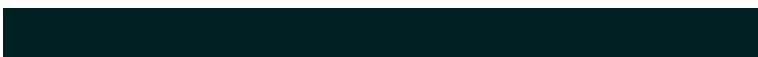
89A7C4



576161



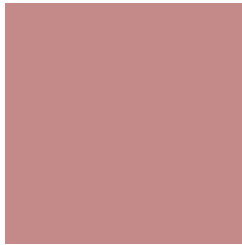
00A1A1



002121

Previews

White Background



This preview shows how the Hex color C48989 looks on a white background.

Color Contrast Check

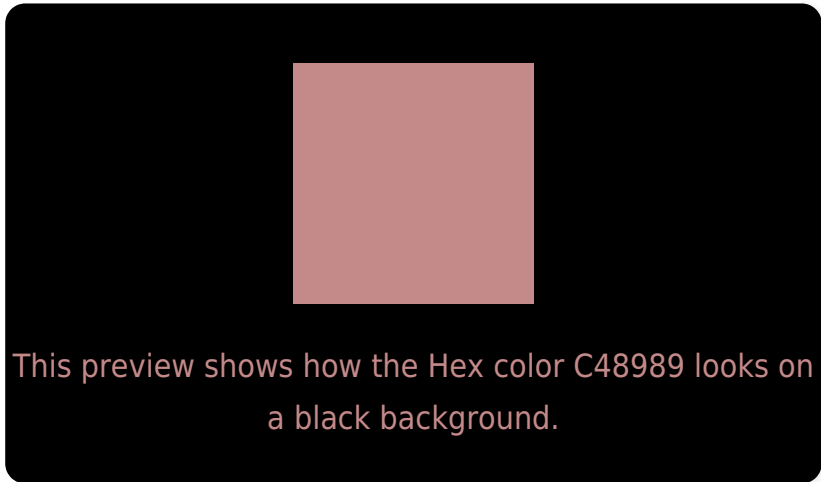
Large Text (above 18pt) WCAG AA × Fail

Any Text WCAG AA × Fail

Large Text (above 18pt) WCAG AAA × Fail

Any Text WCAG AAA × Fail

Black Background



Color Contrast Check

Large Text (above 18pt) WCAG AA ✓ Pass

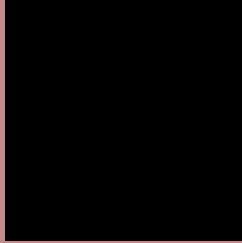
Any Text WCAG AA ✓ Pass

Large Text (above 18pt) WCAG AAA ✓ Pass

Any Text WCAG AAA ✓ Pass

If you want to check with other color combinations, try the [Color Contrast Checker](#).

Hex C48989 Background



This preview shows how black text looks on a background with the Hex color C48989.



This preview shows how white text looks on a background with the Hex color C48989.

Color Blindness Simulation

Color vision deficiency is a very complex topic, and I could not describe the different causes any better than Wikipedia does, so if you want to learn more, you should check out their [article about color blindness](#).

Dichromacy



Original Color
C48989

Protanopia
9D9891

Deuteranopia
AD9387



Tritanopia
C58892

Trichromacy



Original Color
C48989

Protanomaly
AB938E

Deuteranomaly
B58F88

Tritanomaly
C5888F

Monochromacy



Original Color
C48989

Achromatopsia
9B9B9B

Achromatomaly
AA9494

CSS Examples

Text

The CSS property to change the color of the text to Hex C48989 is called "color". The color property can be set on classes, ids or directly on the HTML element.

This example shows how text in the color #C48989 looks like.

```
.text, #text, p{  
    color:#C48989  
}
```

If you want to add a text shadow in that color use the text-shadow property, you can generate a text shadow directly with our [CSS Text Shadow Generator](#).

Here you see how black text with a 4 pixel #C48989 colored shadow looks like.

```
.shadow{ text-shadow: 4px 4px 2px #C48989
}
```

Border

The CSS property to change the border of an element to Hex C48989 is called "border". The border property can be set on classes, ids or directly on the HTML element.

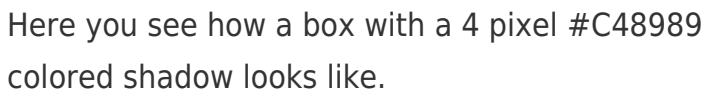
This example shows the color as border, it can be applied via the CSS property "border" or "border-color".

```
.border, #border, table{ border:4px solid
#C48989 }
```

If only the border color should be changed use the property `border-color`.

```
.border{ border-color:#C48989 }
```

If you want to add a box shadow in that color use:



Here you see how a box with a 4 pixel #C48989 colored shadow looks like.

```
.boxshadow{ -moz-box-shadow:4px 4px 4px  
4px #C48989; -webkit-box-shadow:4px 4px  
4px 4px #C48989; box-shadow:4px 4px 4px  
4px #C48989 }
```

Background

The CSS property to change the background color of an element to Hex C48989 is called "background". The background property can be set on classes, ids or directly on the HTML element.

```
.background, #background, body{  
background:#C48989 }
```

If only the background color should be changed can be used:

```
.background{ background-color:#C48989 }
```

This example shows the color as background, it is applied via the CSS property "background".

To optimize and compress your CSS code, you can use our [online CSS compressor and optimizer](#) based on csstidy. If you want to create a linear or radial gradient as background or border, check our [CSS Gradient Generator](#).

Hey! You found this booklet interesting? Support Converting Colors with the new Membership Option!

The pro membership hides all ads, plus gives you double the colors in the color bucket, and more awesome pro features!

[Learn more, Memberships starting at \\$2.50/m!](#)

**Follow me
on Twitter!**

@ConvertingColor