

Converting Colors

Hex(C48C81)

Have a look what the booklet for
Hex(C48C81) contains.

Hex(C48C81)	3
<i>Conversions</i>	4
<i>Details</i>	6
<i>Harmonies</i>	11
<i>Previews</i>	23
<i>Color Blindness Simulation</i>	26
<i>CSS Examples</i>	29

Color

Hex(C48C81)

Conversions

Conversions Part 1

Format	Color
Hex	C48C81
RGB	196, 140, 129
RGB Percent	77%, 55%, 51%
CMY	0.2314, 0.4510, 0.4941
CMYK	0.00, 0.29, 0.34, 0.23
HSL	10°, 36%, 64%
HSV	10°, 34%, 77%
XYZ	36.1055, 32.0769, 25.0574
YIQ	155.4900, 36.9070, 8.4510

Conversions

Conversions Part 2

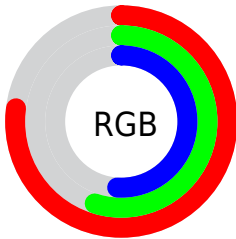
Format	Color
R _Y B	196, 142, 129
Decimal	12881025
CIE Lab	63.41, 19.85, 14.35
CIE LCh	63, 24.489, 35.859
Yxy	32.0769, 0.3872, 0.3440
Android (android.graphics.Color)	4291071105 (0xFFC48C81)
YUV	155.4900, -13.0596, 35.5273
Hunter-Lab	56.6365, 14.6790, 13.4142

Details

The Hex color **C48C81** is a light color, and the websafe version is hex **CC9999**. A complement of this color would be **81B9C4**, and the grayscale version is **9C9C9C**.

A 20% lighter version of the original color is **FEC2B6**, and **8D5A50** is the 20% darker color. If you saturate the color by 10%, you get **C47C6D**, and if you desaturate by 10%, it is **C49C95**.

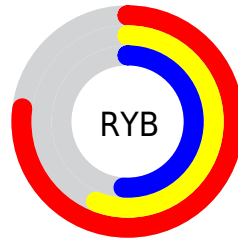
Distribution



Red (77%)

Green (55%)

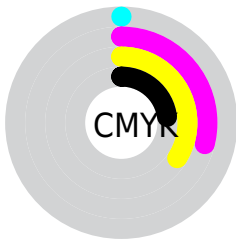
Blue (51%)



Red (77%)

Yellow (56%)

Blue (51%)

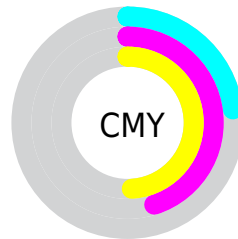


Cyan (0%)

Magenta (29%)

Yellow (34%)

Black (23%)



Cyan (23%)

Magenta (45%)

Yellow (49%)

Brightness & Saturation Gradients

These gradients show how the Hex color C48C81 changes by changing the brightness by 10 percent. The first figure shows a shift by +10% for each color and the second figure -10%.

Similar to the brightness gradients but the following saturation gradients show a change of the Hex color C48C81 by changing the saturation by 10% instead.

 C48C81

 C48C81

FFFFFF

 A87268

 FEC2B6

 8D5A50

 FFDED1

 724239

 FFFBEE

 582B23

 3F150E

 280000

 000000

 C48C81

 C48C81

 C47C6D

 C49C95

 C46B5A

 C4ADA8

 C45B46

 C4BDBC

 C44A33

 C4CECF

 C43A1F

 C4DEE3

 C42A0B

 C4EEF7

 C42000

 C4FFFF

Harmonies

Analogous

The Analogous color harmony consists of three colors that are next to each other on the color wheel.



C58A96



C48C81



B89272

Triad

The Triadic color harmony groups three colors that are evenly spaced from another and form a triangle on the color wheel.



C48C81



74A487



849AC5

Complementary

The Complementary color scheme is a pair of colors which are on the opposite of each other on the color wheel.



C48C81



81B9C4

Split Complementary

Split-complementary colors differ from the complementary color scheme. The scheme consists of three colors, the original color and two neighbors of the complement color.



67A1C1



C48C81



5FA69D

Square

The Square scheme is like the rectangle color scheme, but the four colors are evenly spaced on the color wheel.



C48C81



8DA076



58A5B2



A292BD

Rectangle

The Rectangle color scheme consists of four colors that form a rectangle on the color wheel.



C48C81



AC976E



58A5B2



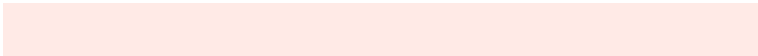
7A9CC5

Sweetspot

The Sweet Spot groups the original color and five complimentary colors.



C48C81



FFEAE6



C481BA



807370



000000



808080

Same Dimension

The Same Dimension uses a secret algorithm to generate beautiful new colors.



C48C81



FFA896



C4AD81



615957



A11A00



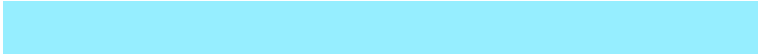
210500

Inverse Universe

The Inverse Universe completely reimagines the original color for something new.



81B9C4



96EEFF



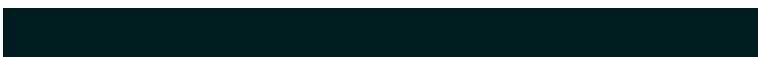
8198C4



575F61



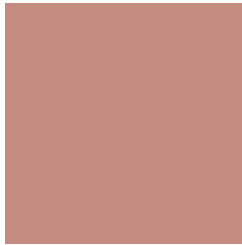
0086A1



001C21

Previews

White Background



This preview shows how the Hex color C48C81 looks on a white background.

Color Contrast Check

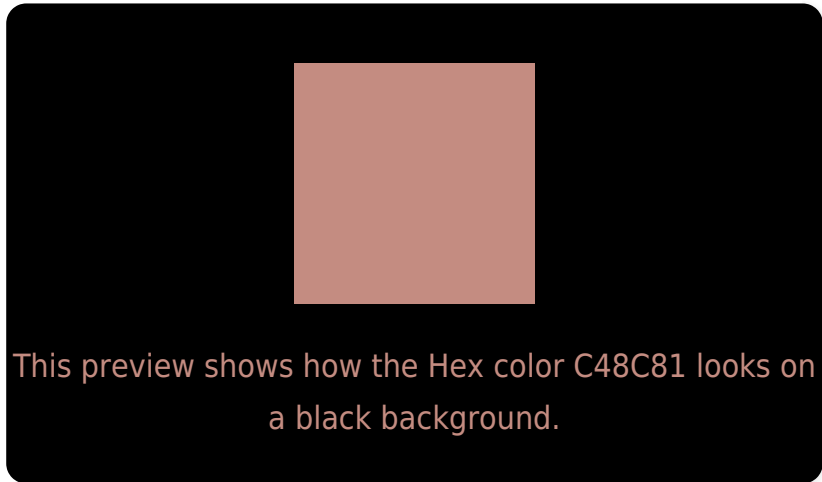
Large Text (above 18pt) WCAG AA × Fail

Any Text WCAG AA × Fail

Large Text (above 18pt) WCAG AAA × Fail

Any Text WCAG AAA × Fail

Black Background



Color Contrast Check

Large Text (above 18pt) WCAG AA ✓ Pass

Any Text WCAG AA ✓ Pass

Large Text (above 18pt) WCAG AAA ✓ Pass

Any Text WCAG AAA ✓ Pass

If you want to check with other color combinations, try the [Color Contrast Checker](#).

Hex C48C81 Background



This preview shows how black text looks on a background with the Hex color C48C81.



This preview shows how white text looks on a background with the Hex color C48C81.

Color Blindness Simulation

Color vision deficiency is a very complex topic, and I could not describe the different causes any better than Wikipedia does, so if you want to learn more, you should check out their [article about color blindness](#).

Dichromacy



Original Color
C48C81

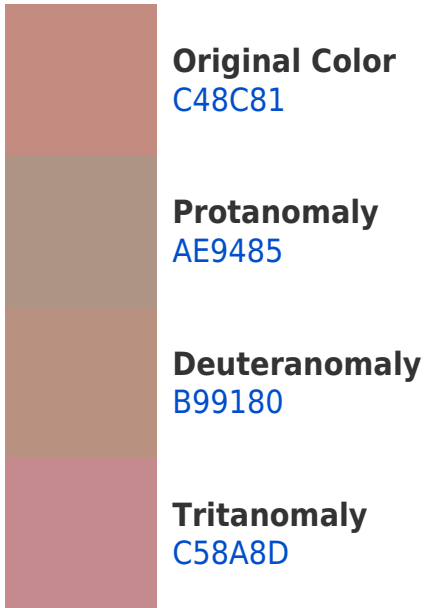
Protanopia
A19988

Deuteranopia
B29480



Tritanopia
C68994

Trichromacy



Monochromacy



CSS Examples

Text

The CSS property to change the color of the text to Hex C48C81 is called "color". The color property can be set on classes, ids or directly on the HTML element.

This example shows how text in the color #C48C81 looks like.

```
.text, #text, p{  
    color:#C48C81  
}
```

If you want to add a text shadow in that color use the text-shadow property, you can generate a text shadow directly with our [CSS Text Shadow Generator](#).

Here you see how black text with a 4 pixel #C48C81 colored shadow looks like.

```
.shadow{ text-shadow: 4px 4px 2px #C48C81
}
```

Border

The CSS property to change the border of an element to Hex C48C81 is called "border". The border property can be set on classes, ids or directly on the HTML element.

This example shows the color as border, it can be applied via the CSS property "border" or "border-color".

```
.border, #border, table{ border:4px solid
#C48C81 }
```

If only the border color should be changed use the property `border-color`.

```
.border{ border-color:#C48C81 }
```

If you want to add a box shadow in that color use:

Here you see how a box with a 4 pixel #C48C81 colored shadow looks like.

```
.boxshadow{ -moz-box-shadow:4px 4px 4px  
4px #C48C81; -webkit-box-shadow:4px 4px  
4px 4px #C48C81; box-shadow:4px 4px 4px  
4px #C48C81 }
```

Background

The CSS property to change the background color of an element to Hex C48C81 is called "background". The background property can be set on classes, ids or directly on the HTML element.

```
.background, #background, body{  
background:#C48C81 }
```

If only the background color should be changed can be used:

```
.background{ background-color:#C48C81 }
```

This example shows the color as background, it is applied via the CSS property "background".

To optimize and compress your CSS code, you can use our [online CSS compressor and optimizer](#) based on csstidy. If you want to create a linear or radial gradient as background or border, check our [CSS Gradient Generator](#).

Hey! You found this booklet interesting? Support Converting Colors with the new Membership Option!

The pro membership hides all ads, plus gives you double the colors in the color bucket, and more awesome pro features!

[Learn more, Memberships starting at \\$2.50/m!](#)

**Follow me
on Twitter!**

@ConvertingColor