

Converting Colors

Hex(C48F59)

Have a look what the booklet for
Hex(C48F59) contains.

Hex(C48F59)	3
<i>Conversions</i>	4
<i>Details</i>	6
<i>Harmonies</i>	11
<i>Previews</i>	23
<i>Color Blindness Simulation</i>	26
<i>CSS Examples</i>	29

Color

Hex(C48F59)

Conversions

Conversions Part 1

Format	Color
Hex	C48F59
RGB	196, 143, 89
RGB Percent	77%, 56%, 35%
CMY	0.2314, 0.4392, 0.6510
CMYK	0.00, 0.27, 0.55, 0.23
HSL	30°, 48%, 56%
HSV	30°, 55%, 77%
XYZ	34.3906, 32.1020, 13.8349
YIQ	152.6910, 48.9220, -5.5580

Conversions

Conversions Part 2

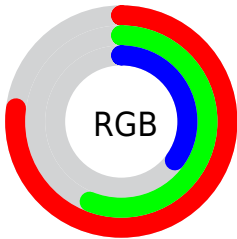
Format	Color
RYB	194, 196, 89
Decimal	12881753
CIELab	63.43, 13.93, 36.40
CIELCh	63, 38.972, 69.054
Yxy	32.1020, 0.4281, 0.3996
Android (android.graphics.Color)	4291071833 (0xFFC48F59)
YUV	152.6910, -31.3997, 37.9820
Hunter-Lab	56.6586, 9.1933, 25.1836

Details

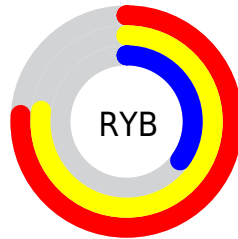
The Hex color **C48F59** is a dark color, and the websafe version is hex **CC9966**. The color can be described as middle muted orange. A complement of this color would be **598EC4**, and the grayscale version is **999999**.

A 20% lighter version of the original color is **FFC58C**, and **8B5D29** is the 20% darker color. If you saturate the color by 10%, you get **C48545**, and if you desaturate by 10%, it is **C4996D**.

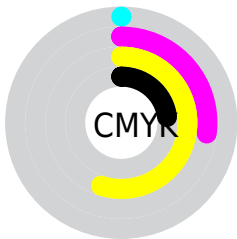
Distribution



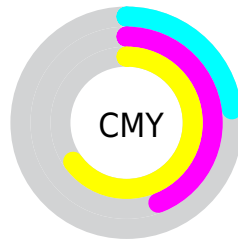
- Red (77%)
- Green (56%)
- Blue (35%)



- Red (76%)
- Yellow (77%)
- Blue (35%)



- Cyan (0%)
- Magenta (27%)
- Yellow (55%)
- Black (23%)



- Cyan (23%)
- Magenta (44%)
- Yellow (65%)

Brightness & Saturation Gradients

These gradients show how the Hex color C48F59 changes by changing the brightness by 10 percent. The first figure shows a shift by +10% for each color and the second figure -10%.

Similar to the brightness gradients but the following saturation gradients show a change of the Hex color C48F59 by changing the saturation by 10% instead.

 C48F59

 C48F59

FFFFFF

 A77541

 FFC58C

 8B5D29

 FFE1A7

 704512

 FFFDC2

 552F00

 FFFFDE

 3B1A00

 FFFFFFFB

 230100

 000000

 C48F59

 C48F59

 C48545

 C4996D

 C47C32

 C4A280

 C4721E

 C4AC94

 C4680B

 C4B6A7

 C46300

 C4C0BB

 C4C9CF

 C4D3E2

 C4DDF6

 C4E6FF

Harmonies

Analogous

The Analogous color harmony consists of three colors that are next to each other on the color wheel.



D88470



C48F59



A59B54

Triad

The Triadic color harmony groups three colors that are evenly spaced from another and form a triangle on the color wheel.



C48F59



00ACA3



AB8DD0

Complementary

The Complementary color scheme is a pair of colors which are on the opposite of each other on the color wheel.



C48F59



598EC4

Split Complementary

Split-complementary colors differ from the complementary color scheme. The scheme consists of three colors, the original color and two neighbors of the complement color.



779ADE



C48F59



00AAC4

Square

The Square scheme is like the rectangle color scheme, but the four colors are evenly spaced on the color wheel.



C48F59



53AA80



2DA4DA



CD81B3

Rectangle

The Rectangle color scheme consists of four colors that form a rectangle on the color wheel.



C48F59



8DA25B



2DA4DA



9B91D6

Sweetspot

The Sweet Spot groups the original color and five complimentary colors.



C48F59



FFEBD6



C4598F



807467



000000



808080

Same Dimension

The Same Dimension uses a secret algorithm to generate beautiful new colors.



C48F59



FFAC57



C4C459



615C57



A15100



211100

Inverse Universe

The Inverse Universe completely reimagines the original color for something new.



598EC4



57AAFF



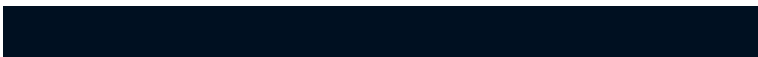
5959C4



575C61



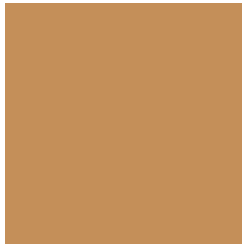
0050A1



001021

Previews

White Background



This preview shows how the Hex color C48F59 looks on a white background.

Color Contrast Check

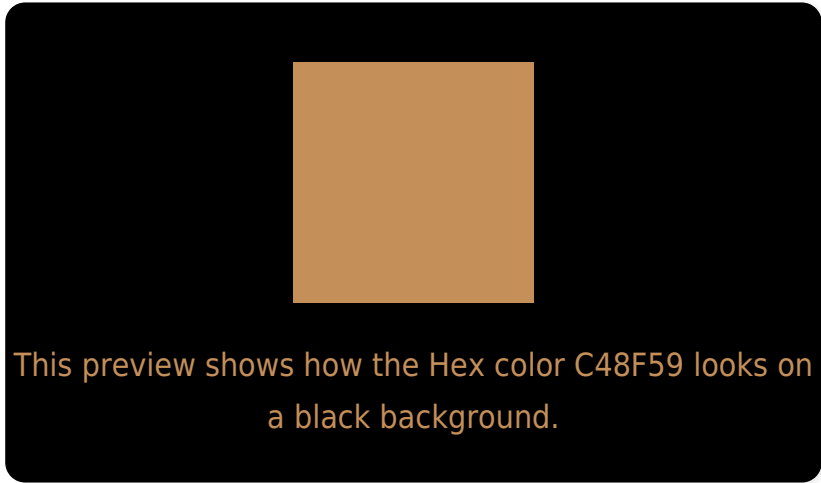
Large Text (above 18pt) WCAG AA × Fail

Any Text WCAG AA × Fail

Large Text (above 18pt) WCAG AAA × Fail

Any Text WCAG AAA × Fail

Black Background



Color Contrast Check

Large Text (above 18pt) WCAG AA ✓ Pass

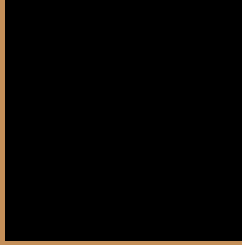
Any Text WCAG AA ✓ Pass

Large Text (above 18pt) WCAG AAA ✓ Pass

Any Text WCAG AAA ✓ Pass

If you want to check with other color combinations, try the [Color Contrast Checker](#).

Hex C48F59 Background



This preview shows how black text looks on a background with the Hex color C48F59.



This preview shows how white text looks on a background with the Hex color C48F59.

Color Blindness Simulation

Color vision deficiency is a very complex topic, and I could not describe the different causes any better than Wikipedia does, so if you want to learn more, you should check out their [article about color blindness](#).

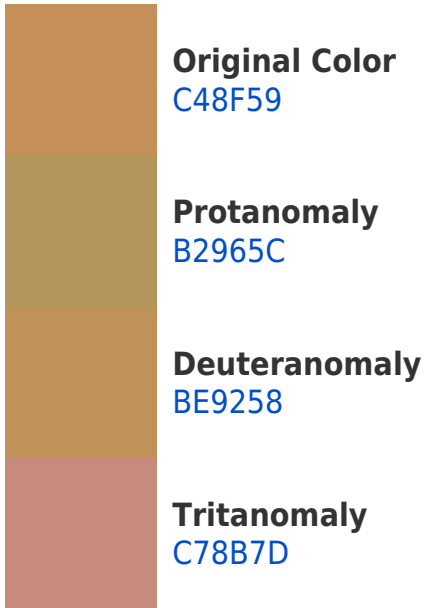
Dichromacy



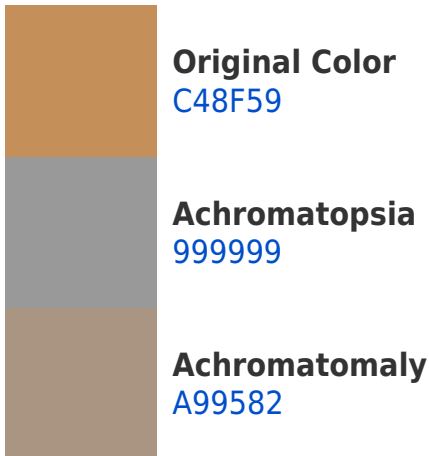


Tritanopia
C98892

Trichromacy



Monochromacy



CSS Examples

Text

The CSS property to change the color of the text to Hex C48F59 is called "color". The color property can be set on classes, ids or directly on the HTML element.

This example shows how text in the color #C48F59 looks like.

```
.text, #text, p{
  color:#C48F59
}
```

If you want to add a text shadow in that color use the text-shadow property, you can generate a text shadow directly with our [CSS Text Shadow Generator](#).

Here you see how black text with a 4 pixel #C48F59 colored shadow looks like.

```
.shadow{ text-shadow: 4px 4px 2px #C48F59
}
```

Border

The CSS property to change the border of an element to Hex C48F59 is called "border". The border property can be set on classes, ids or directly on the HTML element.

This example shows the color as border, it can be applied via the CSS property "border" or "border-color".

```
.border, #border, table{ border:4px solid
#C48F59 }
```

If only the border color should be changed use the property border-color.

```
.border{ border-color:#C48F59 }
```

If you want to add a box shadow in that color use:

Here you see how a box with a 4 pixel #C48F59 colored shadow looks like.

```
.boxshadow{ -moz-box-shadow:4px 4px 4px  
4px #C48F59; -webkit-box-shadow:4px 4px  
4px 4px #C48F59; box-shadow:4px 4px 4px  
4px #C48F59 }
```

Background

The CSS property to change the background color of an element to Hex C48F59 is called "background". The background property can be set on classes, ids or directly on the HTML element.

```
.background, #background, body{  
background:#C48F59 }
```

If only the background color should be changed can be used:

```
.background{ background-color:#C48F59 }
```

This example shows the color as background, it is applied via the CSS property "background".

To optimize and compress your CSS code, you can use our [online CSS compressor and optimizer](#) based on csstidy. If you want to create a linear or radial gradient as background or border, check our [CSS Gradient Generator](#).

Hey! You found this booklet interesting? Support Converting Colors with the new Membership Option!

The pro membership hides all ads, plus gives you double the colors in the color bucket, and more awesome pro features!

[Learn more, Memberships starting at \\$2.50/m!](#)

**Follow me
on Twitter!**

@ConvertingColor