

# Converting Colors

Hex(C49067)

Have a look what the booklet for  
Hex(C49067) contains.

|  |    |
|--|----|
| <b>Hex(C49067)</b> .....                       | 3  |
| <b><i>Conversions</i></b> .....                | 4  |
| <b><i>Details</i></b> .....                    | 6  |
| <b><i>Harmonies</i></b> .....                  | 11 |
| <b><i>Previews</i></b> .....                   | 23 |
| <b><i>Color Blindness Simulation</i></b> ..... | 26 |
| <b><i>CSS Examples</i></b> .....               | 29 |

**Color**

**Hex(C49067)**

# Conversions

## Conversions Part 1

| <b>Format</b> | <b>Color</b>               |
|---------------|----------------------------|
| Hex           | C49067                     |
| RGB           | 196, 144, 103              |
| RGB Percent   | 77%, 56%, 40%              |
| CMY           | 0.2314, 0.4353, 0.5961     |
| CMYK          | 0.00, 0.27, 0.47, 0.23     |
| HSL           | 26°, 44%, 59%              |
| HSV           | 26°, 47%, 77%              |
| XYZ           | 35.1864, 32.6616, 17.2817  |
| YIQ           | 154.8740, 44.1530, -1.7270 |

# Conversions

## Conversions Part 2

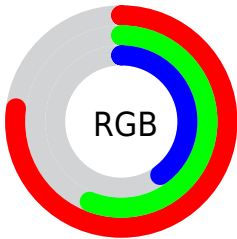
| <b>Format</b>                       | <b>Color</b>                   |
|-------------------------------------|--------------------------------|
| <b>R<sub>YB</sub></b>               | 196, 176, 103                  |
| Decimal                             | 12882023                       |
| CIE <sub>Lab</sub>                  | 63.89, 14.68, 29.45            |
| CIE <sub>LCh</sub>                  | 64, 32.905, 63.501             |
| Yxy                                 | 32.6616, 0.4133,<br>0.3837     |
| Android<br>(android.graphics.Color) | 4291072103<br>(0xFFC49067)     |
| YUV                                 | 154.8740, -25.5739,<br>36.0675 |
| Hunter-Lab                          | 57.1503, 9.8862,<br>22.0764    |

# Details

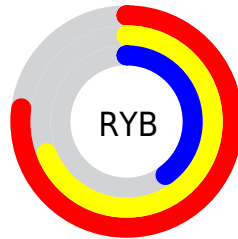
The Hex color **C49067** is a light color, and the websafe version is hex **CC9966**. A complement of this color would be **679BC4**, and the grayscale version is **9B9B9B**.

A 20% lighter version of the original color is **FFC69B**, and **8C5E37** is the 20% darker color. If you saturate the color by 10%, you get **C48553**, and if you desaturate by 10%, it is **C49B7B**.

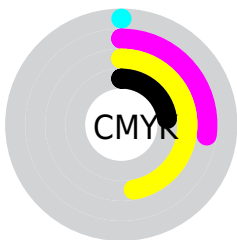
# Distribution



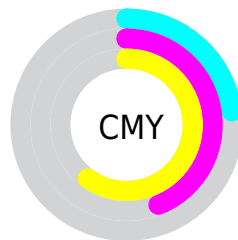
- Red (77%)
- Green (56%)
- Blue (40%)



- Red (77%)
- Yellow (69%)
- Blue (40%)



- Cyan (0%)
- Magenta (27%)
- Yellow (47%)
- Black (23%)



- Cyan (23%)
- Magenta (44%)
- Yellow (60%)

# Brightness & Saturation Gradients

These gradients show how the Hex color C49067 changes by changing the brightness by 10 percent. The first figure shows a shift by +10% for each color and the second figure -10%.

Similar to the brightness gradients but the following saturation gradients show a change of the Hex color C49067 by changing the saturation by 10% instead.



 C49067

 C49067

FFFFFF

 A8764F

 FFC69B

 8C5E37

 FFE2B6

 714621

 FFFFFD1

 562F0A

 FFFFFEE

 3D1A00

 250200

 000000

 C49067

 C49067

 C48553

 C49B7B

 C47A40

 C4A68E

 C46F2C

 C4B1A2

 C46419

 C4BCB5

 C45905

 C4C7C9

 C45600

 C4D2DD

 C4DDF0

 C4E8FF

 C4F3FF

# Harmonies

## Analogous

The Analogous color harmony consists of three colors that are next to each other on the color wheel.



D3877C



C49067



AB9A60

# Triad

The Triadic color harmony groups three colors that are evenly spaced from another and form a triangle on the color wheel.



C49067



44AB9D



A392CC

# Complementary

The Complementary color scheme is a pair of colors which are on the opposite of each other on the color wheel.



C49067



679BC4

# Split Complementary

Split-complementary colors differ from the complementary color scheme. The scheme consists of three colors, the original color and two neighbors of the complement color.



779CD5



C49067



2CAABA

# Square

The Square scheme is like the rectangle color scheme, but the four colors are evenly spaced on the color wheel.



C49067



69A880



47A5CF



C388B5

# Rectangle

The Rectangle color scheme consists of four colors that form a rectangle on the color wheel.



C49067



97A064



47A5CF



9596D0



# Sweetspot

The Sweet Spot groups the original color and five complimentary colors.



C49067



FFEBDB



C4679C



80736A



000000



808080



# Same Dimension

The Same Dimension uses a secret algorithm to generate beautiful new colors.



C49067



FFAE6E



C4BE67



615B57



A14700



210F00

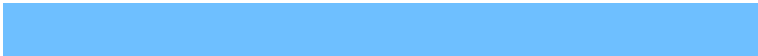


# Inverse Universe

The Inverse Universe completely reimagines the original color for something new.



679BC4



6EBFFF



676DC4



575D61



005AA1

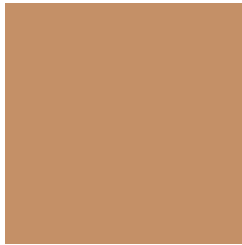


001321



# Previews

## White Background



This preview shows how the Hex color C49067 looks on a white background.

## Color Contrast Check

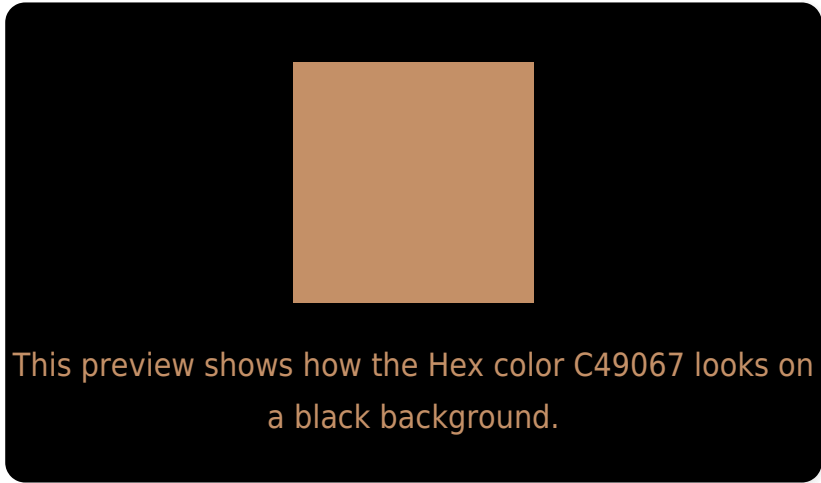
Large Text (above 18pt) WCAG AA × Fail

Any Text WCAG AA × Fail

Large Text (above 18pt) WCAG AAA × Fail

Any Text WCAG AAA × Fail

# Black Background



## Color Contrast Check

Large Text (above 18pt) WCAG AA ✓ Pass

Any Text WCAG AA ✓ Pass

Large Text (above 18pt) WCAG AAA ✓ Pass

Any Text WCAG AAA ✓ Pass

If you want to check with other color combinations, try the [Color Contrast Checker](#).



## Hex C49067 Background



This preview shows how black text looks on a background with the Hex color C49067.




This preview shows how white text looks on a background with the Hex color C49067.

# Color Blindness Simulation

Color vision deficiency is a very complex topic, and I could not describe the different causes any better than Wikipedia does, so if you want to learn more, you should check out their [article about color blindness](#).

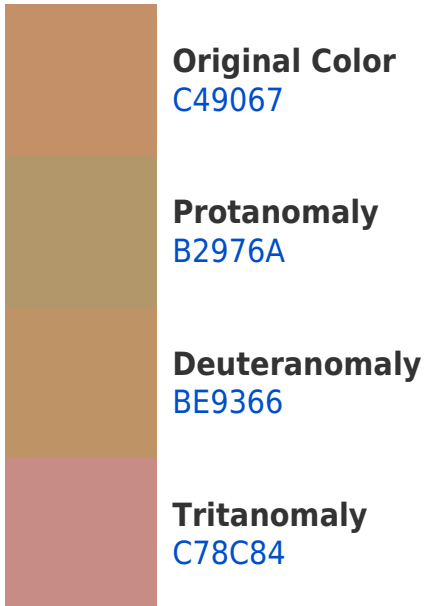
## Dichromacy



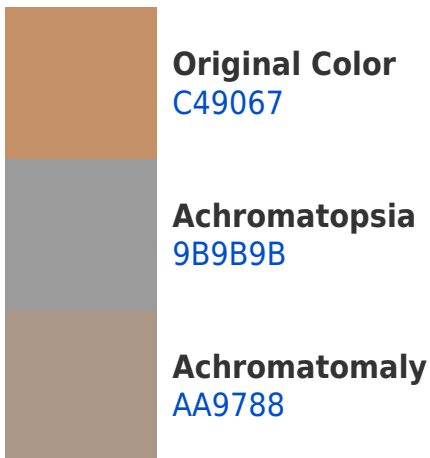


**Tritanopia**  
C88A95

# Trichromacy



# Monochromacy



# CSS Examples

## Text

The CSS property to change the color of the text to Hex C49067 is called "color". The color property can be set on classes, ids or directly on the HTML element.

This example shows how text in the color #C49067 looks like.

```
.text, #text, p{  
    color:#C49067  
}
```

If you want to add a text shadow in that color use the text-shadow property, you can generate a text shadow directly with our [CSS Text Shadow Generator](#).

Here you see how black text with a 4 pixel #C49067 colored shadow looks like.

```
.shadow{ text-shadow: 4px 4px 2px #C49067  
}
```

## Border

The CSS property to change the border of an element to Hex C49067 is called "border". The border property can be set on classes, ids or directly on the HTML element.

This example shows the color as border, it can be applied via the CSS property "border" or "border-color".

```
.border, #border, table{ border:4px solid  
#C49067 }
```

If only the border color should be changed use the property `border-color`.

```
.border{ border-color:#C49067 }
```

If you want to add a box shadow in that color use:

Here you see how a box with a 4 pixel #C49067 colored shadow looks like.

```
.boxshadow{ -moz-box-shadow:4px 4px 4px  
4px #C49067; -webkit-box-shadow:4px 4px  
4px 4px #C49067; box-shadow:4px 4px 4px  
4px #C49067 }
```

# Background

The CSS property to change the background color of an element to Hex C49067 is called "background". The background property can be set on classes, ids or directly on the HTML element.

```
.background, #background, body{  
background:#C49067 }
```

If only the background color should be changed can be used:

```
.background{ background-color:#C49067 }
```

This example shows the color as background, it is applied via the CSS property "background".

To optimize and compress your CSS code, you can use our [online CSS compressor and optimizer](#) based on csstidy. If you want to create a linear or radial gradient as background or border, check our [CSS Gradient Generator](#).



Hey! You found this booklet interesting? Support Converting Colors with the new Membership Option!

The pro membership hides all ads, plus gives you double the colors in the color bucket, and more awesome pro features!

**[Learn more, Memberships starting at \\$2.50/m!](#)**

**Follow me  
on Twitter!**

@ConvertingColor