

Converting Colors

Hex(C4948F)

Have a look what the booklet for
Hex(C4948F) contains.

Hex(C4948F)	3
<i>Conversions</i>	4
<i>Details</i>	6
<i>Harmonies</i>	11
<i>Previews</i>	23
<i>Color Blindness Simulation</i>	26
<i>CSS Examples</i>	29

Color

Hex(C4948F)

Conversions

Conversions Part 1

Format	Color
Hex	C4948F
RGB	196, 148, 143
RGB Percent	77%, 58%, 56%
CMY	0.2314, 0.4196, 0.4392
CMYK	0.00, 0.24, 0.27, 0.23
HSL	6°, 31%, 66%
HSV	6°, 27%, 77%
XYZ	38.3128, 34.8987, 30.7034
YIQ	161.7820, 30.2130, 8.6210

Conversions

Conversions Part 2

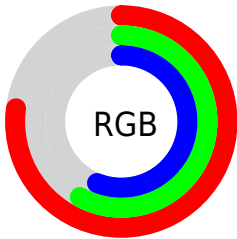
Format	Color
R _Y B	196, 149, 143
Decimal	12883087
CIE Lab	65.67, 17.33, 9.66
CIE LCh	66, 19.836, 29.139
Yxy	34.8987, 0.3687, 0.3358
Android (android.graphics.Color)	4291073167 (0xFFC4948F)
YUV	161.7820, -9.2595, 30.0092
Hunter-Lab	59.0752, 12.3834, 10.5375

Details

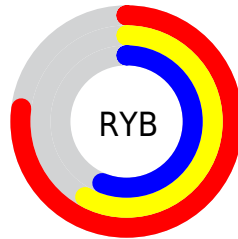
The Hex color **C4948F** is a light color, and the websafe version is hex **CC9999**. A complement of this color would be **8FBFC4**, and the grayscale version is **A2A2A2**.

A 20% lighter version of the original color is **FDCAC5**, and **8D615D** is the 20% darker color. If you saturate the color by 10%, you get **C4827B**, and if you desaturate by 10%, it is **C4A6A3**.

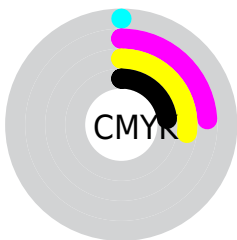
Distribution



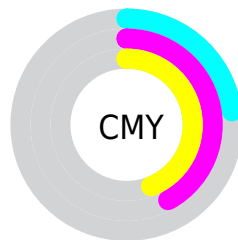
- Red (77%)
- Green (58%)
- Blue (56%)



- Red (77%)
- Yellow (58%)
- Blue (56%)



- Cyan (0%)
- Magenta (24%)
- Yellow (27%)
- Black (23%)



- Cyan (23%)
- Magenta (42%)
- Yellow (44%)

Brightness & Saturation Gradients

These gradients show how the Hex color C4948F changes by changing the brightness by 10 percent. The first figure shows a shift by +10% for each color and the second figure -10%.

Similar to the brightness gradients but the following saturation gradients show a change of the Hex color C4948F by changing the saturation by 10% instead.



C4948F



C4948F

FFFFFF



A87A75



FDCAC5



8D615D



FFE6E1



734945

FFFFFFD



59322F



411C1A



2B0600



000000



C4948F



C4948F



C4827B



C4A6A3

 C47068

 C4B8B6

 C45F54

 C4C9CA

 C44D41

 C4DBDD

 C43B2D

 C4EDF1

 C42919

 C4FFFF

 C41806

 C41200

Harmonies

Analogous

The Analogous color harmony consists of three colors that are next to each other on the color wheel.



C293A1



C4948F



BC9882

Triad

The Triadic color harmony groups three colors that are evenly spaced from another and form a triangle on the color wheel.



C4948F



86A88D



8AA1C3

Complementary

The Complementary color scheme is a pair of colors which are on the opposite of each other on the color wheel.



C4948F



8FBFC4

Split Complementary

Split-complementary colors differ from the complementary color scheme. The scheme consists of three colors, the original color and two neighbors of the complement color.



76A6BD



C4948F



75AA9E

Square

The Square scheme is like the rectangle color scheme, but the four colors are evenly spaced on the color wheel.



C4948F



9AA480



6EA9B0



A29BBE

Rectangle

The Rectangle color scheme consists of four colors that form a rectangle on the color wheel.



C4948F



B39C7D



6EA9B0



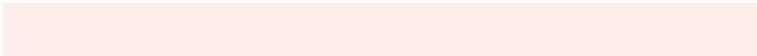
83A3C2

Sweetspot

The Sweet Spot groups the original color and five complimentary colors.



C4948F



FFEDEB



C48FC0



807473



000000



808080

Same Dimension

The Same Dimension uses a secret algorithm to generate beautiful new colors.



C4948F



FFB5AD



C4AE8F



615857



A10F00



210300

Inverse Universe

The Inverse Universe completely reimagines the original color for something new.



8FBFC4



ADF7FF



8FA5C4



576061



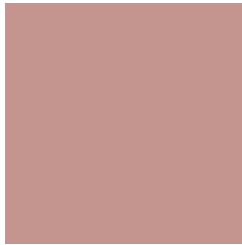
0091A1



001E21

Previews

White Background



This preview shows how the Hex color C4948F looks on a white background.

Color Contrast Check

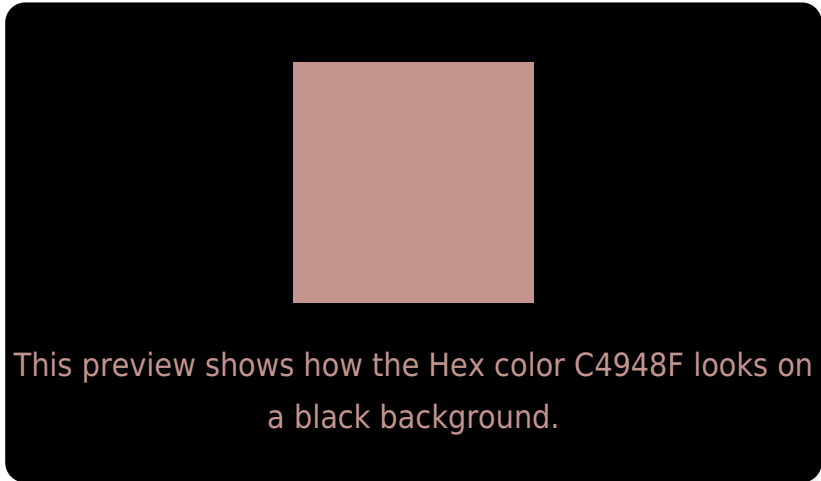
Large Text (above 18pt) WCAG AA × Fail

Any Text WCAG AA × Fail

Large Text (above 18pt) WCAG AAA × Fail

Any Text WCAG AAA × Fail

Black Background



Color Contrast Check

Large Text (above 18pt) WCAG AA ✓ Pass

Any Text WCAG AA ✓ Pass

Large Text (above 18pt) WCAG AAA ✓ Pass

Any Text WCAG AAA ✓ Pass

If you want to check with other color combinations, try the [Color Contrast Checker](#).

Hex C4948F Background



This preview shows how black text looks on a background with the Hex color C4948F.



This preview shows how white text looks on a background with the Hex color C4948F.

Color Blindness Simulation

Color vision deficiency is a very complex topic, and I could not describe the different causes any better than Wikipedia does, so if you want to learn more, you should check out their [article about color blindness](#).


Dichromacy



Original Color
C4948F

Protanopia
A59F95

Deuteranopia
B69A8E



Tritanopia
C6929D

Trichromacy



Original Color
C4948F

Protanomaly
B09B93

Deuteranomaly
BB988E

Tritanomaly
C59398

Monochromacy



Original Color
C4948F

Achromatopsia
A2A2A2

Achromatomaly
AE9D9B

CSS Examples

Text

The CSS property to change the color of the text to Hex C4948F is called "color". The color property can be set on classes, ids or directly on the HTML element.

This example shows how text in the color #C4948F looks like.

```
.text, #text, p{  
    color:#C4948F  
}
```

If you want to add a text shadow in that color use the text-shadow property, you can generate a text shadow directly with our [CSS Text Shadow Generator](#).

Here you see how black text with a 4 pixel #C4948F colored shadow looks like.

```
.shadow{ text-shadow: 4px 4px 2px #C4948F
}
```

Border

The CSS property to change the border of an element to Hex C4948F is called "border". The border property can be set on classes, ids or directly on the HTML element.

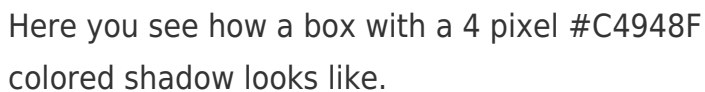
This example shows the color as border, it can be applied via the CSS property "border" or "border-color".

```
.border, #border, table{ border:4px solid
#C4948F }
```

If only the border color should be changed use the property `border-color`.

```
.border{ border-color:#C4948F }
```

If you want to add a box shadow in that color use:



Here you see how a box with a 4 pixel #C4948F colored shadow looks like.

```
.boxshadow{ -moz-box-shadow:4px 4px 4px  
4px #C4948F; -webkit-box-shadow:4px 4px  
4px 4px #C4948F; box-shadow:4px 4px 4px  
4px #C4948F }
```

Background

The CSS property to change the background color of an element to Hex C4948F is called "background". The background property can be set on classes, ids or directly on the HTML element.

```
.background, #background, body{  
background:#C4948F }
```

If only the background color should be changed can be used:

```
.background{ background-color:#C4948F }
```

This example shows the color as background, it is applied via the CSS property "background".

To optimize and compress your CSS code, you can use our [online CSS compressor and optimizer](#) based on csstidy. If you want to create a linear or radial gradient as background or border, check our [CSS Gradient Generator](#).

Hey! You found this booklet interesting? Support Converting Colors with the new Membership Option!

The pro membership hides all ads, plus gives you double the colors in the color bucket, and more awesome pro features!

[Learn more, Memberships starting at \\$2.50/m!](#)

**Follow me
on Twitter!**

@ConvertingColor