

Converting Colors

Hex(C49491)

Have a look what the booklet for
Hex(C49491) contains.

Hex(C49491)	3
<i>Conversions</i>	4
<i>Details</i>	6
<i>Harmonies</i>	11
<i>Previews</i>	23
<i>Color Blindness Simulation</i>	26
<i>CSS Examples</i>	29

Color

Hex(C49491)

Conversions

Conversions Part 1

Format	Color
Hex	C49491
RGB	196, 148, 145
RGB Percent	77%, 58%, 57%
CMY	0.2314, 0.4196, 0.4314
CMYK	0.00, 0.24, 0.26, 0.23
HSL	4°, 30%, 67%
HSV	4°, 26%, 77%
XYZ	38.4657, 34.9599, 31.5086
YIQ	162.0100, 29.5710, 9.2430

Conversions

Conversions Part 2

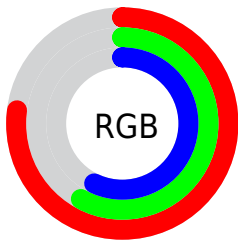
Format	Color
R_{YB}	196, 148, 145
Decimal	12883089
CIE _{Lab}	65.72, 17.61, 8.60
CIE _{LCh}	66, 19.600, 26.039
Yxy	34.9599, 0.3666, 0.3332
Android (android.graphics.Color)	4291073169 (0xFFC49491)
YUV	162.0100, -8.3859, 29.8092
Hunter-Lab	59.1269, 12.6532, 9.7933

Details

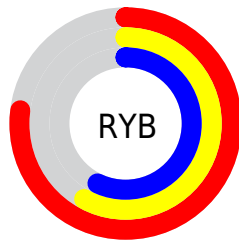
The Hex color **C49491** is a light color, and the websafe version is hex **CC9999**. A complement of this color would be **91C1C4**, and the grayscale version is **A2A2A2**.

A 20% lighter version of the original color is **FDCAC7**, and **8D615F** is the 20% darker color. If you saturate the color by 10%, you get **C4827D**, and if you desaturate by 10%, it is **C4A6A5**.

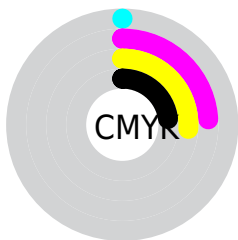
Distribution



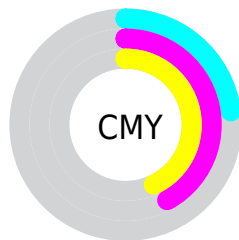
- Red (77%)
- Green (58%)
- Blue (57%)



- Red (77%)
- Yellow (58%)
- Blue (57%)



- Cyan (0%)
- Magenta (24%)
- Yellow (26%)
- Black (23%)



- Cyan (23%)
- Magenta (42%)
- Yellow (43%)

Brightness & Saturation Gradients

These gradients show how the Hex color C49491 changes by changing the brightness by 10 percent. The first figure shows a shift by +10% for each color and the second figure -10%.

Similar to the brightness gradients but the following saturation gradients show a change of the Hex color C49491 by changing the saturation by 10% instead.

 C49491

 C49491

FFFFFF

 A87A77

 FDCAC7

 8D615F

 FFE6E3

 734947

 593231

 411C1C

 2B0601

 000000

 C49491

 C49491

 C4827D

 C4A6A5

 C46F6A

 C4B9B8

 C45D56

 C4CBCC

 C44A43

 C4DEDf

 C4382F

 C4F0F3

 C4251B

 C4FFFF

 C41308

 C40C00

Harmonies

Analogous

The Analogous color harmony consists of three colors that are next to each other on the color wheel.



C193A3



C49491



BD9883

Triad

The Triadic color harmony groups three colors that are evenly spaced from another and form a triangle on the color wheel.



C49491



89A78C



88A2C2

Complementary

The Complementary color scheme is a pair of colors which are on the opposite of each other on the color wheel.



C49491



91C1C4

Split Complementary

Split-complementary colors differ from the complementary color scheme. The scheme consists of three colors, the original color and two neighbors of the complement color.



75A7BC



C49491



77AA9D

Square

The Square scheme is like the rectangle color scheme, but the four colors are evenly spaced on the color wheel.



C49491



9DA380



6FA9AE



A09CBF

Rectangle

The Rectangle color scheme consists of four colors that form a rectangle on the color wheel.



C49491



B59C7E



6FA9AE



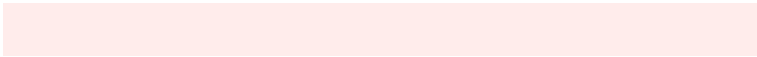
81A4C1

Sweetspot

The Sweet Spot groups the original color and five complimentary colors.



C49491



FFECEB



C491C1



807473



000000



808080

Same Dimension

The Same Dimension uses a secret algorithm to generate beautiful new colors.



C49491



FFB5B0



C4AD91



615857



A10900



210200

Inverse Universe

The Inverse Universe completely reimagines the original color for something new.



91C1C4



B0FAFF



91A8C4



576061



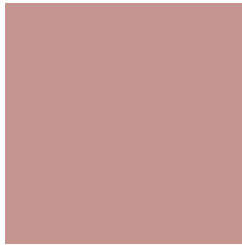
0097A1



001F21

Previews

White Background



This preview shows how the Hex color C49491 looks on a white background.

Color Contrast Check

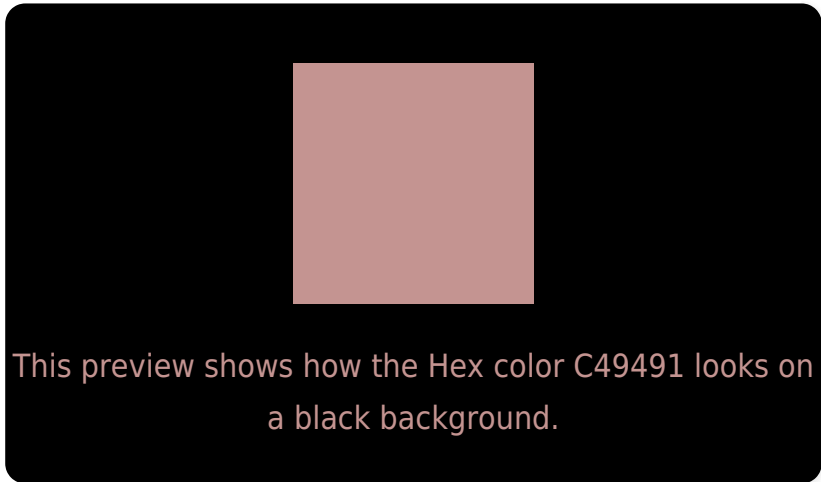
Large Text (above 18pt) WCAG AA × Fail

Any Text WCAG AA × Fail

Large Text (above 18pt) WCAG AAA × Fail

Any Text WCAG AAA × Fail

Black Background



Color Contrast Check

Large Text (above 18pt) WCAG AA ✓ Pass

Any Text WCAG AA ✓ Pass

Large Text (above 18pt) WCAG AAA ✓ Pass

Any Text WCAG AAA ✓ Pass

If you want to check with other color combinations, try the [Color Contrast Checker](#).

Hex C49491 Background



This preview shows how black text looks on a background with the Hex color C49491.

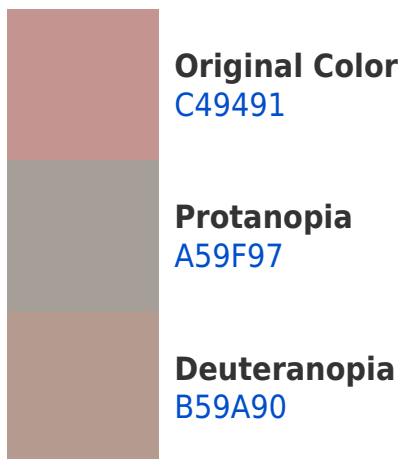



This preview shows how white text looks on a background with the Hex color C49491.

Color Blindness Simulation

Color vision deficiency is a very complex topic, and I could not describe the different causes any better than Wikipedia does, so if you want to learn more, you should check out their [article about color blindness](#).

Dichromacy





Tritanopia
C5929D

Trichromacy



Original Color
C49491

Protanomaly
B09B95

Deuteranomaly
BA9890

Tritanomaly
C59399

Monochromacy



Original Color
C49491

Achromatopsia
A2A2A2

Achromatomaly
AE9D9C

CSS Examples

Text

The CSS property to change the color of the text to Hex C49491 is called "color". The color property can be set on classes, ids or directly on the HTML element.

This example shows how text in the color #C49491 looks like.

```
.text, #text, p{  
    color:#C49491  
}
```

If you want to add a text shadow in that color use the text-shadow property, you can generate a text shadow directly with our [CSS Text Shadow Generator](#).

Here you see how black text with a 4 pixel #C49491 colored shadow looks like.

```
.shadow{ text-shadow: 4px 4px 2px #C49491
}
```

Border

The CSS property to change the border of an element to Hex C49491 is called "border". The border property can be set on classes, ids or directly on the HTML element.

This example shows the color as border, it can be applied via the CSS property "border" or "border-color".

```
.border, #border, table{ border:4px solid
#C49491 }
```

If only the border color should be changed use the property border-color.

```
.border{ border-color:#C49491 }
```

If you want to add a box shadow in that color use:

Here you see how a box with a 4 pixel #C49491 colored shadow looks like.

```
.boxshadow{ -moz-box-shadow:4px 4px 4px  
4px #C49491; -webkit-box-shadow:4px 4px  
4px 4px #C49491; box-shadow:4px 4px 4px  
4px #C49491 }
```

Background

The CSS property to change the background color of an element to Hex C49491 is called "background". The background property can be set on classes, ids or directly on the HTML element.

```
.background, #background, body{  
background:#C49491 }
```

If only the background color should be changed can be used:

```
.background{ background-color:#C49491 }
```

This example shows the color as background, it is applied via the CSS property "background".

To optimize and compress your CSS code, you can use our [online CSS compressor and optimizer](#) based on csstidy. If you want to create a linear or radial gradient as background or border, check our [CSS Gradient Generator](#).

Hey! You found this booklet interesting? Support Converting Colors with the new Membership Option!

The pro membership hides all ads, plus gives you double the colors in the color bucket, and more awesome pro features!

[Learn more, Memberships starting at \\$2.50/m!](#)

**Follow me
on Twitter!**

@ConvertingColor