

Converting Colors

Hex(C49A9A)

Have a look what the booklet for
Hex(C49A9A) contains.

Hex(C49A9A)	3
<i>Conversions</i>	4
<i>Details</i>	6
<i>Harmonies</i>	11
<i>Previews</i>	23
<i>Color Blindness Simulation</i>	26
<i>CSS Examples</i>	29

Color

Hex(C49A9A)

Conversions

Conversions Part 1

Format	Color
Hex	C49A9A
RGB	196, 154, 154
RGB Percent	77%, 60%, 60%
CMY	0.2314, 0.3961, 0.3961
CMYK	0.00, 0.21, 0.21, 0.23
HSL	0°, 26%, 69%
HSV	0°, 21%, 77%
XYZ	40.1533, 37.1801, 35.6320
YIQ	166.5580, 25.0320, 8.9040

Conversions

Conversions Part 2

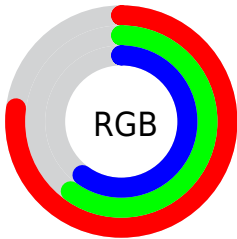
Format	Color
R _Y B	196, 154, 154
Decimal	12884634
CIE Lab	67.41, 15.64, 5.99
CIE LCh	67, 16.746, 20.959
Yxy	37.1801, 0.3554, 0.3291
Android (android.graphics.Color)	4291074714 (0xFFC49A9A)
YUV	166.5580, -6.1911, 25.8206
Hunter-Lab	60.9755, 10.8380, 8.0357

Details

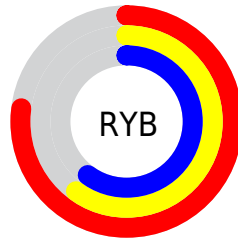
The Hex color **C49A9A** is a light color, and the websafe version is hex **CC9999**. A complement of this color would be **9AC4C4**, and the grayscale version is **A7A7A7**.

A 20% lighter version of the original color is **FDD1D0**, and **8E6767** is the 20% darker color. If you saturate the color by 10%, you get **C48686**, and if you desaturate by 10%, it is **C4AEAE**.

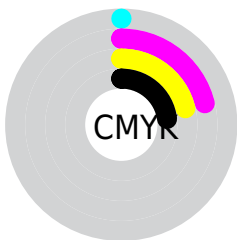
Distribution



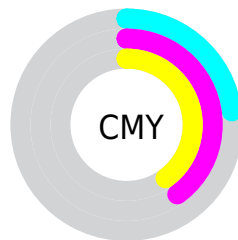
- Red (77%)
- Green (60%)
- Blue (60%)



- Red (77%)
- Yellow (60%)
- Blue (60%)



- Cyan (0%)
- Magenta (21%)
- Yellow (21%)
- Black (23%)



- Cyan (23%)
- Magenta (40%)
- Yellow (40%)

Brightness & Saturation Gradients

These gradients show how the Hex color C49A9A changes by changing the brightness by 10 percent. The first figure shows a shift by +10% for each color and the second figure -10%.

Similar to the brightness gradients but the following saturation gradients show a change of the Hex color C49A9A by changing the saturation by 10% instead.

 C49A9A

 C49A9A

FFFFFF

 A88080

 FDD1D0

 8E6767

 FFEDED

 734F4F

 5A3738

 422223

 2B0D0D

 0C0000

 000000

 C49A9A

 C49A9A

 C48686

 C4AEAE

 C47373

 C4C1C1

 C45F5F

 C4D5D5

 C44C4C

 C4E8E8

 C43838

 C4FCFC

 C42424

 C4FFFF

 C41111

 C40000

Harmonies

Analogous

The Analogous color harmony consists of three colors that are next to each other on the color wheel.



C09AA9



C49A9A



C09D8D

Triad

The Triadic color harmony groups three colors that are evenly spaced from another and form a triangle on the color wheel.



C49A9A



93AA91



8EA7C2

Complementary

The Complementary color scheme is a pair of colors which are on the opposite of each other on the color wheel.



C49A9A



9AC4C4

Split Complementary

Split-complementary colors differ from the complementary color scheme. The scheme consists of three colors, the original color and two neighbors of the complement color.



80ABBB



C49A9A



84AD9F

Square

The Square scheme is like the rectangle color scheme, but the four colors are evenly spaced on the color wheel.



C49A9A



A5A688



7CADA E



A1A2C0

Rectangle

The Rectangle color scheme consists of four colors that form a rectangle on the color wheel.



C49A9A



B9A088



7CADA E



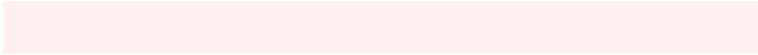
88A8C0

Sweetspot

The Sweet Spot groups the original color and five complimentary colors.



C49A9A



FFF0F0



C49AC4



807777



000000



808080

Same Dimension

The Same Dimension uses a secret algorithm to generate beautiful new colors.



C49A9A



FFBDBD



C4AF9A



615757



A10000



210000

Inverse Universe

The Inverse Universe completely reimagines the original color for something new.



9AC4C4



BDFFFF



9AAFC4



576161



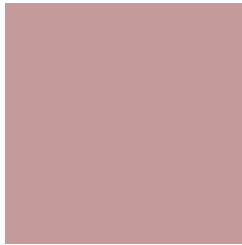
00A1A1



002121

Previews

White Background



This preview shows how the Hex color C49A9A looks on a white background.

Color Contrast Check

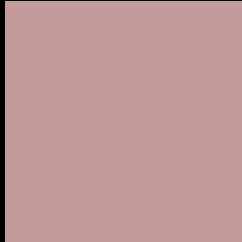
Large Text (above 18pt) WCAG AA × Fail

Any Text WCAG AA × Fail

Large Text (above 18pt) WCAG AAA × Fail

Any Text WCAG AAA × Fail

Black Background



This preview shows how the Hex color C49A9A looks on a black background.

Color Contrast Check

Large Text (above 18pt) WCAG AA ✓ Pass

Any Text WCAG AA ✓ Pass

Large Text (above 18pt) WCAG AAA ✓ Pass

Any Text WCAG AAA ✓ Pass

If you want to check with other color combinations, try the [Color Contrast Checker](#).

Hex C49A9A Background



This preview shows how black text looks on a background with the Hex color C49A9A.

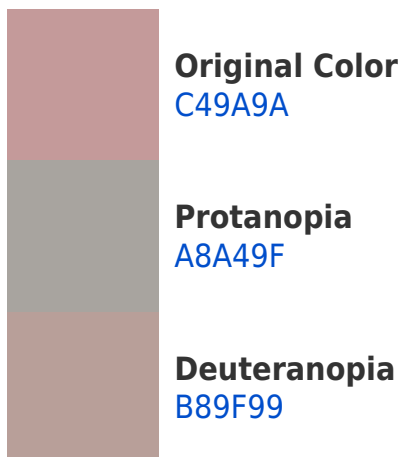


This preview shows how white text looks on a background with the Hex color C49A9A.

Color Blindness Simulation

Color vision deficiency is a very complex topic, and I could not describe the different causes any better than Wikipedia does, so if you want to learn more, you should check out their [article about color blindness](#).

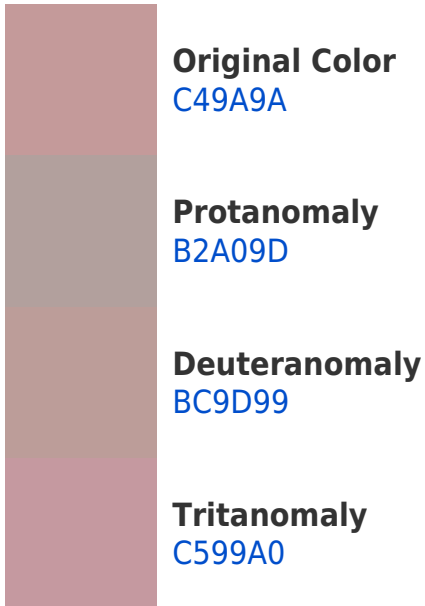
Dichromacy



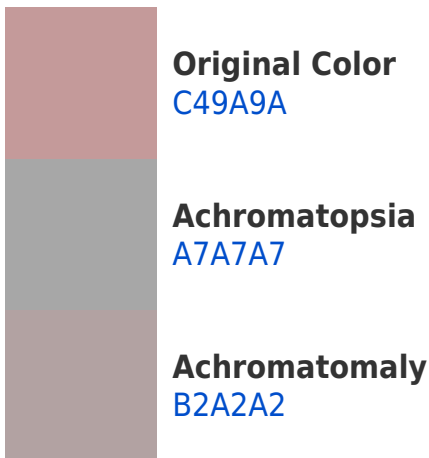


Tritanopia
C598A4

Trichromacy



Monochromacy



CSS Examples

Text

The CSS property to change the color of the text to Hex C49A9A is called "color". The color property can be set on classes, ids or directly on the HTML element.

This example shows how text in the color #C49A9A looks like.

```
.text, #text, p{  
    color:#C49A9A  
}
```

If you want to add a text shadow in that color use the text-shadow property, you can generate a text shadow directly with our [CSS Text Shadow Generator](#).

Here you see how black text with a 4 pixel #C49A9A colored shadow looks like.

```
.shadow{ text-shadow: 4px 4px 2px #C49A9A
}
```

Border

The CSS property to change the border of an element to Hex C49A9A is called "border". The border property can be set on classes, ids or directly on the HTML element.

This example shows the color as border, it can be applied via the CSS property "border" or "border-color".

```
.border, #border, table{ border:4px solid
#C49A9A }
```

If only the border color should be changed use the property `border-color`.

```
.border{ border-color:#C49A9A }
```

If you want to add a box shadow in that color use:

Here you see how a box with a 4 pixel #C49A9A colored shadow looks like.

```
.boxshadow{ -moz-box-shadow:4px 4px 4px  
4px #C49A9A; -webkit-box-shadow:4px 4px  
4px 4px #C49A9A; box-shadow:4px 4px 4px  
4px #C49A9A }
```

Background

The CSS property to change the background color of an element to Hex C49A9A is called "background". The background property can be set on classes, ids or directly on the HTML element.

```
.background, #background, body{  
background:#C49A9A }
```

If only the background color should be changed can be used:

```
.background{ background-color:#C49A9A }
```

This example shows the color as background, it is applied via the CSS property "background".

To optimize and compress your CSS code, you can use our [online CSS compressor and optimizer](#) based on csstidy. If you want to create a linear or radial gradient as background or border, check our [CSS Gradient Generator](#).

Hey! You found this booklet interesting? Support Converting Colors with the new Membership Option!

The pro membership hides all ads, plus gives you double the colors in the color bucket, and more awesome pro features!

[Learn more, Memberships starting at \\$2.50/m!](#)

**Follow me
on Twitter!**

@ConvertingColor