

# Converting Colors

Hex(C4A1A2)

Have a look what the booklet for  
Hex(C4A1A2) contains.

<b>Hex(C4A1A2)</b> .....	3
<b><i>Conversions</i></b> .....	4
<b><i>Details</i></b> .....	6
<b><i>Harmonies</i></b> .....	11
<b><i>Previews</i></b> .....	23
<b><i>Color Blindness Simulation</i></b> .....	26
<b><i>CSS Examples</i></b> .....	29

# **Color**

**Hex(C4A1A2)**

# Conversions

## Conversions Part 1

Format	Color
Hex	C4A1A2
RGB	196, 161, 162
RGB Percent	77%, 63%, 64%
CMY	0.2314, 0.3686, 0.3647
CMYK	0.00, 0.18, 0.17, 0.23
HSL	358°, 23%, 70%
HSV	358°, 18%, 77%
XYZ	42.0314, 39.8341, 39.6559
YIQ	171.5790, 20.5390, 7.7310

# Conversions

## Conversions Part 2

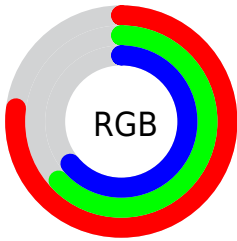
<b>Format</b>	<b>Color</b>
<b>R<sub>YB</sub></b>	196, 161, 162
Decimal	12886434
CIE <sub>Lab</sub>	69.35, 13.04, 4.33
CIE <sub>LCh</sub>	69, 13.740, 18.368
Y <sub>xy</sub>	39.8341, 0.3459, 0.3278
Android (android.graphics.Color)	4291076514 (0xFFC4A1A2)
YUV	171.5790, -4.7224, 21.4172
Hunter-Lab	63.1143, 8.4233, 6.9270

# Details

The Hex color **C4A1A2** is a light color, and the websafe version is hex **CC9999**. A complement of this color would be **A1C4C3**, and the grayscale version is **ACACAC**.

A 20% lighter version of the original color is **FDD8D9**, and **8E6D6E** is the 20% darker color. If you saturate the color by 10%, you get **C48D8F**, and if you desaturate by 10%, it is **C4B5B5**.

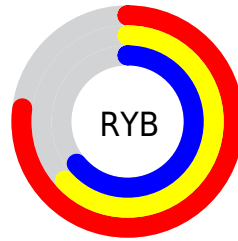
# Distribution



Red (77%)

Green (63%)

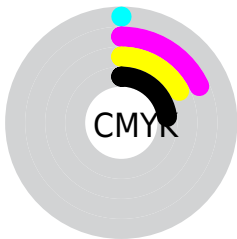
Blue (64%)



Red (77%)

Yellow (63%)

Blue (64%)

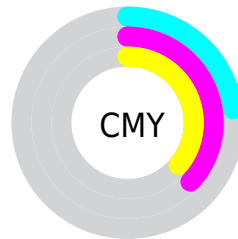


Cyan (0%)

Magenta (18%)

Yellow (17%)

Black (23%)



Cyan (23%)

Magenta (37%)

Yellow (36%)

# Brightness & Saturation Gradients

These gradients show how the Hex color C4A1A2 changes by changing the brightness by 10 percent. The first figure shows a shift by +10% for each color and the second figure -10%.

Similar to the brightness gradients but the following saturation gradients show a change of the Hex color C4A1A2 by changing the saturation by 10% instead.





C4A1A2



C4A1A2

FFFFFF



A98788



FDD8D9



8E6D6E



FFF4F5



745556



5B3E3F



432829



2C1315



160000



000000



C4A1A2



C4A1A2

 C48D8F

 C4B5B5

 C47A7C

 C4C8C8

 C46669

 C4DCDB

 C45356

 C4EFEE

 C43F43

 C4FFFF

 C42B30

 C4181D

 C4040A

 C40006

# Harmonies

## Analogous

The Analogous color harmony consists of three colors that are next to each other on the color wheel.



C0A1AF



C4A1A2



C1A397

# Triad

The Triadic color harmony groups three colors that are evenly spaced from another and form a triangle on the color wheel.



C4A1A2



9DAE99



96ACC1

# Complementary

The Complementary color scheme is a pair of colors which are on the opposite of each other on the color wheel.



C4A1A2



A1C4C3

# Split Complementary

Split-complementary colors differ from the complementary color scheme. The scheme consists of three colors, the original color and two neighbors of the complement color.



8CAFBB



C4A1A2



90B0A4

# Square

The Square scheme is like the rectangle color scheme, but the four colors are evenly spaced on the color wheel.



C4A1A2



ABAB92



8AB1B1



A6A8C1

# Rectangle

The Rectangle color scheme consists of four colors that form a rectangle on the color wheel.



C4A1A2



BCA593



8AB1B1



92ADC0



# Sweetspot

The Sweet Spot groups the original color and five complimentary colors.



C4A1A2



FFF2F3



C3A1C4



807878



000000



808080



# Same Dimension

The Same Dimension uses a secret algorithm to generate beautiful new colors.



C4A1A2



FFC9CB



C4B1A1



615757



A10005



210001



# Inverse Universe

The Inverse Universe completely reimagines the original color for something new.



C4A1A2



FFC9CB



A1B4C4



615757



A10005

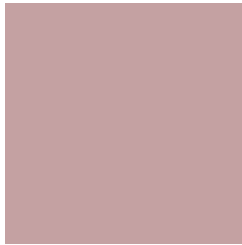


210001



# Previews

## White Background



This preview shows how the Hex color C4A1A2 looks on a white background.

## Color Contrast Check

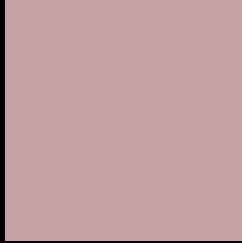
Large Text (above 18pt) WCAG AA × Fail

Any Text WCAG AA × Fail

Large Text (above 18pt) WCAG AAA × Fail

Any Text WCAG AAA × Fail

# Black Background



This preview shows how the Hex color C4A1A2 looks on a black background.

## Color Contrast Check

Large Text (above 18pt) WCAG AA ✓ Pass

Any Text WCAG AA ✓ Pass

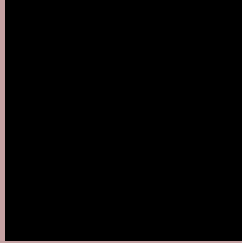
Large Text (above 18pt) WCAG AAA ✓ Pass

Any Text WCAG AAA ✓ Pass

If you want to check with other color combinations, try the [Color Contrast Checker](#).



## Hex C4A1A2 Background



This preview shows how black text looks on a background with the Hex color C4A1A2.



This preview shows how white text looks on a background with the Hex color C4A1A2.

# Color Blindness Simulation

Color vision deficiency is a very complex topic, and I could not describe the different causes any better than Wikipedia does, so if you want to learn more, you should check out their [article about color blindness](#).

## Dichromacy



**Original Color**  
C4A1A2

**Protanopia**  
ADA9A6

**Deuteranopia**  
BDA4A1



# Trichromacy



**Original Color**  
C4A1A2

**Protanomaly**  
B5A6A5

**Deuteranomaly**  
C0A3A1

**Tritanomaly**  
C5A0A8

# Monochromacy



**Original Color**  
C4A1A2

**Achromatopsia**  
ACACAC

**Achromatomaly**  
B5A8A8

# CSS Examples

## Text

The CSS property to change the color of the text to Hex C4A1A2 is called "color". The color property can be set on classes, ids or directly on the HTML element.

This example shows how text in the color #C4A1A2 looks like.

```
.text, #text, p{  
    color:#C4A1A2  
}
```

If you want to add a text shadow in that color use the text-shadow property, you can generate a text shadow directly with our [CSS Text Shadow Generator](#).

Here you see how black text with a 4 pixel #C4A1A2 colored shadow looks like.

```
.shadow{ text-shadow: 4px 4px 2px #C4A1A2
}
```

## Border

The CSS property to change the border of an element to Hex C4A1A2 is called "border". The border property can be set on classes, ids or directly on the HTML element.

This example shows the color as border, it can be applied via the CSS property "border" or "border-color".

```
.border, #border, table{ border:4px solid
#C4A1A2 }
```

If only the border color should be changed use the property `border-color`.

```
.border{ border-color:#C4A1A2 }
```

If you want to add a box shadow in that color use:

Here you see how a box with a 4 pixel #C4A1A2 colored shadow looks like.

```
.boxshadow{ -moz-box-shadow:4px 4px 4px  
4px #C4A1A2; -webkit-box-shadow:4px 4px  
4px 4px #C4A1A2; box-shadow:4px 4px 4px  
4px #C4A1A2 }
```

# Background

The CSS property to change the background color of an element to Hex C4A1A2 is called "background". The background property can be set on classes, ids or directly on the HTML element.

```
.background, #background, body{  
background:#C4A1A2 }
```

If only the background color should be changed can be used:

```
.background{ background-color:#C4A1A2 }
```

This example shows the color as background, it is applied via the CSS property "background".

To optimize and compress your CSS code, you can use our [online CSS compressor and optimizer](#) based on csstidy. If you want to create a linear or radial gradient as background or border, check our [CSS Gradient Generator](#).



Hey! You found this booklet interesting? Support Converting Colors with the new Membership Option!

The pro membership hides all ads, plus gives you double the colors in the color bucket, and more awesome pro features!

**[Learn more, Memberships starting at \\$2.50/m!](#)**

**Follow me  
on Twitter!**

@ConvertingColor