

Converting Colors

Hex(C4A39D)

Have a look what the booklet for
Hex(C4A39D) contains.

Hex(C4A39D)	3
<i>Conversions</i>	4
<i>Details</i>	6
<i>Harmonies</i>	11
<i>Previews</i>	23
<i>Color Blindness Simulation</i>	26
<i>CSS Examples</i>	29

Color

Hex(C4A39D)

Conversions

Conversions Part 1

Format	Color
Hex	C4A39D
RGB	196, 163, 157
RGB Percent	77%, 64%, 62%
CMY	0.2314, 0.3608, 0.3843
CMYK	0.00, 0.17, 0.20, 0.23
HSL	9°, 25%, 69%
HSV	9°, 20%, 77%
XYZ	41.9479, 40.3645, 37.4785
YIQ	172.1830, 21.5940, 5.1300

Conversions

Conversions Part 2

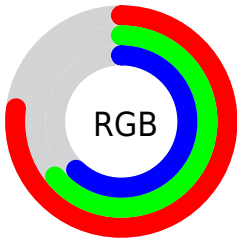
Format	Color
RYB	196, 164, 157
Decimal	12886941
CIELab	69.73, 11.16, 7.64
CIElCh	70, 13.528, 34.402
Yxy	40.3645, 0.3502, 0.3370
Android (android.graphics.Color)	4291077021 (0xFFC4A39D)
YUV	172.1830, -7.4852, 20.8875
Hunter-Lab	63.5330, 6.6725, 9.4976

Details

The Hex color **C4A39D** is a light color, and the websafe version is hex **CC9999**. A complement of this color would be **9DBEC4**, and the grayscale version is **ACACAC**.

A 20% lighter version of the original color is **FDDAD4**, and **8E6F6A** is the 20% darker color. If you saturate the color by 10%, you get **C49289**, and if you desaturate by 10%, it is **C4B4B1**.

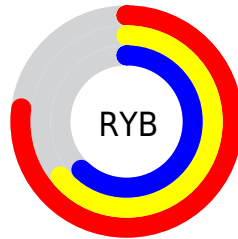
Distribution



Red (77%)

Green (64%)

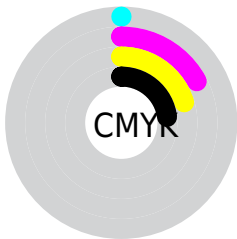
Blue (62%)



Red (77%)

Yellow (64%)

Blue (62%)

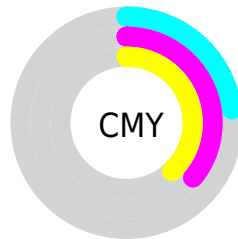


Cyan (0%)

Magenta (17%)

Yellow (20%)

Black (23%)



Cyan (23%)

Magenta (36%)

Yellow (38%)

Brightness & Saturation Gradients

These gradients show how the Hex color C4A39D changes by changing the brightness by 10 percent. The first figure shows a shift by +10% for each color and the second figure -10%.

Similar to the brightness gradients but the following saturation gradients show a change of the Hex color C4A39D by changing the saturation by 10% instead.

 C4A39D

FFFFFF

 FDDAD4

 FFF6F0

 C4A39D

 A98983

 8E6F6A

 745752

 5B3F3B

 432925

 2C1510

 160000

 000000

 C4A39D

 C4A39D

 C49289

 C4B4B1

 C48276

 C4C4C4

 C47162

 C4D5D8

 C4614F

 C4E5EB

 C4503B

 C4F6FF

 C43F27

 C4FFFF

 C42F14

 C41E00

Harmonies

Analogous

The Analogous color harmony consists of three colors that are next to each other on the color wheel.



C4A2A9



C4A39D



BEA695

Triad

The Triadic color harmony groups three colors that are evenly spaced from another and form a triangle on the color wheel.



C4A39D



97B19F



9FABC3

Complementary

The Complementary color scheme is a pair of colors which are on the opposite of each other on the color wheel.



C4A39D



9DBEC4

Split Complementary

Split-complementary colors differ from the complementary color scheme. The scheme consists of three colors, the original color and two neighbors of the complement color.



92AEC0



C4A39D



8DB2AC

Square

The Square scheme is like the rectangle color scheme, but the four colors are evenly spaced on the color wheel.



C4A39D



A5AE96



8BB1B8



AFA7BF

Rectangle

The Rectangle color scheme consists of four colors that form a rectangle on the color wheel.



C4A39D



B7A992



8BB1B8



9AACC2

Sweetspot

The Sweet Spot groups the original color and five complimentary colors.



C4A39D



FFF2F0



C49DBE



807877



000000



808080

Same Dimension

The Same Dimension uses a secret algorithm to generate beautiful new colors.



C4A39D



FFCBC2



C4B69D



615957



A11900



210500

Inverse Universe

The Inverse Universe completely reimagines the original color for something new.



9DBEC4



C2F6FF



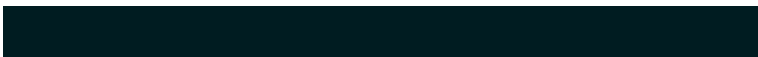
9DABC4



575F61



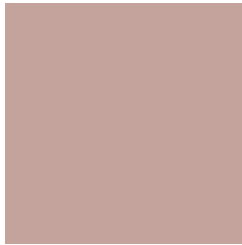
0088A1



001C21

Previews

White Background



This preview shows how the Hex color C4A39D looks on a white background.

Color Contrast Check

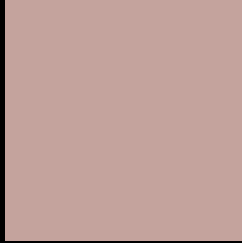
Large Text (above 18pt) WCAG AA × Fail

Any Text WCAG AA × Fail

Large Text (above 18pt) WCAG AAA × Fail

Any Text WCAG AAA × Fail

Black Background



This preview shows how the Hex color C4A39D looks on a black background.

Color Contrast Check

Large Text (above 18pt) WCAG AA ✓ Pass

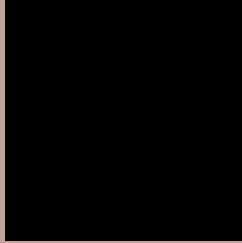
Any Text WCAG AA ✓ Pass

Large Text (above 18pt) WCAG AAA ✓ Pass

Any Text WCAG AAA ✓ Pass

If you want to check with other color combinations, try the [Color Contrast Checker](#).

Hex C4A39D Background



This preview shows how black text looks on a background with the Hex color C4A39D.



This preview shows how white text looks on a background with the Hex color C4A39D.

Color Blindness Simulation

Color vision deficiency is a very complex topic, and I could not describe the different causes any better than Wikipedia does, so if you want to learn more, you should check out their [article about color blindness](#).

Dichromacy



Original Color
C4A39D

Protanopia
B0AAA1

Deuteranopia
C0A59D



Tritanopia
C6A1AD

Trichromacy



Original Color
C4A39D

Protanomaly
B7A7A0

Deuteranomaly
C1A49D

Tritanomaly
C5A2A7

Monochromacy



Original Color
C4A39D

Achromatopsia
ACACAC

Achromatomaly
B5A9A7

CSS Examples

Text

The CSS property to change the color of the text to Hex C4A39D is called "color". The color property can be set on classes, ids or directly on the HTML element.

This example shows how text in the color #C4A39D looks like.

```
.text, #text, p{  
    color:#C4A39D  
}
```

If you want to add a text shadow in that color use the text-shadow property, you can generate a text shadow directly with our [CSS Text Shadow Generator](#).

Here you see how black text with a 4 pixel #C4A39D colored shadow looks like.

```
.shadow{ text-shadow: 4px 4px 2px #C4A39D
}
```

Border

The CSS property to change the border of an element to Hex C4A39D is called "border". The border property can be set on classes, ids or directly on the HTML element.

This example shows the color as border, it can be applied via the CSS property "border" or "border-color".

```
.border, #border, table{ border:4px solid
#C4A39D }
```

If only the border color should be changed use the property `border-color`.

```
.border{ border-color:#C4A39D }
```

If you want to add a box shadow in that color use:

Here you see how a box with a 4 pixel #C4A39D colored shadow looks like.

```
.boxshadow{ -moz-box-shadow:4px 4px 4px  
4px #C4A39D; -webkit-box-shadow:4px 4px  
4px 4px #C4A39D; box-shadow:4px 4px 4px  
4px #C4A39D }
```

Background

The CSS property to change the background color of an element to Hex C4A39D is called "background". The background property can be set on classes, ids or directly on the HTML element.

```
.background, #background, body{  
background:#C4A39D }
```

If only the background color should be changed can be used:

```
.background{ background-color:#C4A39D }
```

This example shows the color as background, it is applied via the CSS property "background".

To optimize and compress your CSS code, you can use our [online CSS compressor and optimizer](#) based on csstidy. If you want to create a linear or radial gradient as background or border, check our [CSS Gradient Generator](#).

Hey! You found this booklet interesting? Support Converting Colors with the new Membership Option!

The pro membership hides all ads, plus gives you double the colors in the color bucket, and more awesome pro features!

[Learn more, Memberships starting at \\$2.50/m!](#)

**Follow me
on Twitter!**

@ConvertingColor