

# Converting Colors

Hex(C4A78B)

Have a look what the booklet for  
Hex(C4A78B) contains.

<b>Hex(C4A78B)</b> .....	3
<b><i>Conversions</i></b> .....	4
<b><i>Details</i></b> .....	6
<b><i>Harmonies</i></b> .....	11
<b><i>Previews</i></b> .....	23
<b><i>Color Blindness Simulation</i></b> .....	26
<b><i>CSS Examples</i></b> .....	29

**Color**

**Hex(C4A78B)**

# Conversions

## Conversions Part 1

<b>Format</b>	<b>Color</b>
Hex	C4A78B
RGB	196, 167, 139
RGB Percent	77%, 65%, 55%
CMY	0.2314, 0.3451, 0.4549
CMYK	0.00, 0.15, 0.29, 0.23
HSL	29°, 33%, 66%
HSV	29°, 29%, 77%
XYZ	41.2439, 41.2373, 30.2119
YIQ	172.4790, 26.2720, -2.5600

# Conversions

## Conversions Part 2

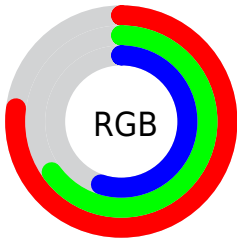
Format	Color
<a href="#">RYB</a>	<a href="#">196, 194, 139</a>
Decimal	<a href="#">12887947</a>
CIELab	<a href="#">70.34, 6.38, 18.42</a>
CIELCh	<a href="#">70, 19.490, 70.906</a>
Yxy	<a href="#">41.2373, 0.3660, 0.3659</a>
Android (android.graphics.Color)	<a href="#">4291078027 (0xFFC4A78B)</a>
YUV	<a href="#">172.4790, -16.5051, 20.6279</a>
Hunter-Lab	<a href="#">64.2163, 2.2659, 17.0571</a>

# Details

The Hex color **C4A78B** is a light color, and the websafe version is hex **CC9999**. A complement of this color would be **8BA8C4**, and the grayscale version is **ADADAD**.

A 20% lighter version of the original color is **FDDEC1**, and **8D7359** is the 20% darker color. If you saturate the color by 10%, you get **C49D77**, and if you desaturate by 10%, it is **C4B19F**.

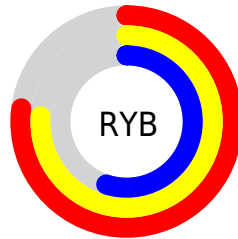
# Distribution



Red (77%)

Green (65%)

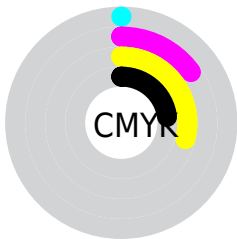
Blue (55%)



Red (77%)

Yellow (76%)

Blue (55%)

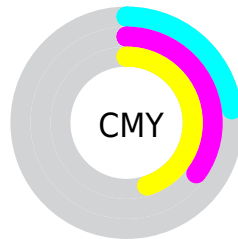


Cyan (0%)

Magenta (15%)

Yellow (29%)

Black (23%)



Cyan (23%)

Magenta (35%)

Yellow (45%)

# Brightness & Saturation Gradients

These gradients show how the Hex color C4A78B changes by changing the brightness by 10 percent. The first figure shows a shift by +10% for each color and the second figure -10%.

Similar to the brightness gradients but the following saturation gradients show a change of the Hex color C4A78B by changing the saturation by 10% instead.





C4A78B



C4A78B

FFFFFF



A88D71



FDDEC1



8D7359



FFFBDD



735B41



FFFFFF9



5A432B



412D16



2B1800



110000



000000



C4A78B



C4A78B

 C49D77

 C4B19F

 C49364

 C4BBB2

 C48950

 C4C5C6

 C47F3D

 C4CFD9

 C47529

 C4D9ED

 C46B15

 C4E3FF

 C46102

 C4EDFF

 C46000

 C4F7FF

 C4FFFF

# Harmonies

## Analogous

The Analogous color harmony consists of three colors that are next to each other on the color wheel.



CFA296



C4A78B



B3AD89

# Triad

The Triadic color harmony groups three colors that are evenly spaced from another and form a triangle on the color wheel.



C4A78B



7EB6B2



B7A5C7

# Complementary

The Complementary color scheme is a pair of colors which are on the opposite of each other on the color wheel.



C4A78B



8BA8C4

# Split Complementary

Split-complementary colors differ from the complementary color scheme. The scheme consists of three colors, the original color and two neighbors of the complement color.



A0ABCE



C4A78B



7DB5C3

# Square

The Square scheme is like the rectangle color scheme, but the four colors are evenly spaced on the color wheel.



C4A78B



8CB5A0



8AB1CD



C8A1B8

# Rectangle

The Rectangle color scheme consists of four colors that form a rectangle on the color wheel.



C4A78B



A6B08D



8AB1CD



B0A7CA



# Sweetspot

The Sweet Spot groups the original color and five complimentary colors.



C4A78B



FFF3E8



C48BA8



807871



000000



808080



# Same Dimension

The Same Dimension uses a secret algorithm to generate beautiful new colors.



C4A78B



FFD2A6



C4C38B



615C57



A14F00



211000

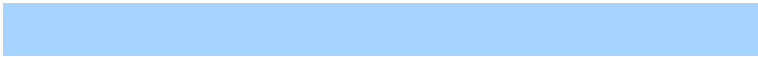


# Inverse Universe

The Inverse Universe completely reimagines the original color for something new.



8BA8C4



A6D3FF



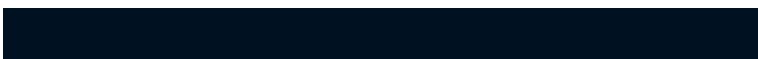
8B8CC4



575C61



0052A1



001121



# Previews

## White Background



This preview shows how the Hex color C4A78B looks on a white background.

## Color Contrast Check

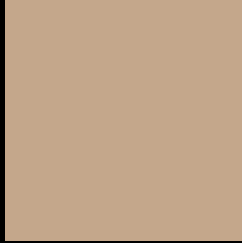
Large Text (above 18pt) WCAG AA × Fail

Any Text WCAG AA × Fail

Large Text (above 18pt) WCAG AAA × Fail

Any Text WCAG AAA × Fail

# Black Background



This preview shows how the Hex color C4A78B looks on a black background.

## Color Contrast Check

Large Text (above 18pt) WCAG AA ✓ Pass

Any Text WCAG AA ✓ Pass

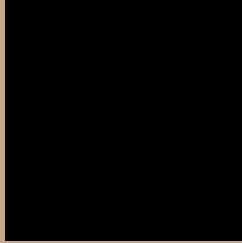
Large Text (above 18pt) WCAG AAA ✓ Pass

Any Text WCAG AAA ✓ Pass

If you want to check with other color combinations, try the [Color Contrast Checker](#).



## Hex C4A78B Background



This preview shows how black text looks on a background with the Hex color C4A78B.



This preview shows how white text looks on a background with the Hex color C4A78B.

# Color Blindness Simulation

Color vision deficiency is a very complex topic, and I could not describe the different causes any better than Wikipedia does, so if you want to learn more, you should check out their [article about color blindness](#).

## Dichromacy



**Original Color**  
C4A78B

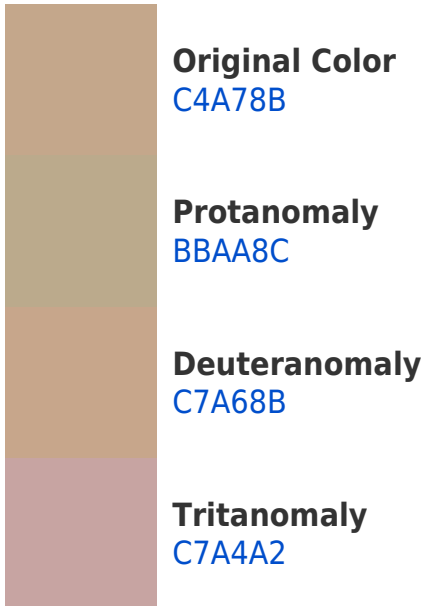
**Protanopia**  
B6AC8D

**Deuteranopia**  
C8A58B

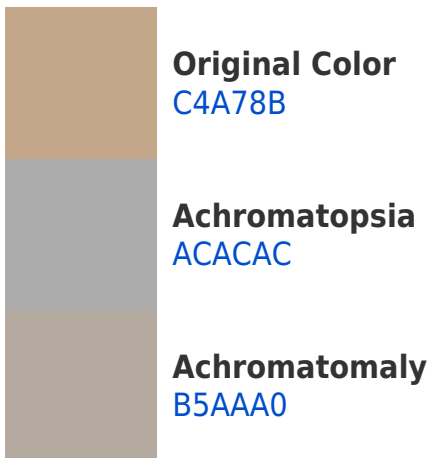


**Tritanopia**  
C8A2AF

# Trichromacy



# Monochromacy



# CSS Examples

## Text

The CSS property to change the color of the text to Hex C4A78B is called "color". The color property can be set on classes, ids or directly on the HTML element.

This example shows how text in the color #C4A78B looks like.

```
.text, #text, p{  
    color:#C4A78B  
}
```

If you want to add a text shadow in that color use the text-shadow property, you can generate a text shadow directly with our [CSS Text Shadow Generator](#).

Here you see how black text with a 4 pixel #C4A78B colored shadow looks like.

```
.shadow{ text-shadow: 4px 4px 2px #C4A78B
}
```

## Border

The CSS property to change the border of an element to Hex C4A78B is called "border". The border property can be set on classes, ids or directly on the HTML element.

This example shows the color as border, it can be applied via the CSS property "border" or "border-color".

```
.border, #border, table{ border:4px solid
#C4A78B }
```

If only the border color should be changed use the property `border-color`.

```
.border{ border-color:#C4A78B }
```

If you want to add a box shadow in that color use:

Here you see how a box with a 4 pixel #C4A78B colored shadow looks like.

```
.boxshadow{ -moz-box-shadow:4px 4px 4px  
4px #C4A78B; -webkit-box-shadow:4px 4px  
4px 4px #C4A78B; box-shadow:4px 4px 4px  
4px #C4A78B }
```

# Background

The CSS property to change the background color of an element to Hex C4A78B is called "background". The background property can be set on classes, ids or directly on the HTML element.

```
.background, #background, body{  
background:#C4A78B }
```

If only the background color should be changed can be used:

```
.background{ background-color:#C4A78B }
```

This example shows the color as background, it is applied via the CSS property "background".

To optimize and compress your CSS code, you can use our [online CSS compressor and optimizer](#) based on csstidy. If you want to create a linear or radial gradient as background or border, check our [CSS Gradient Generator](#).



Hey! You found this booklet interesting? Support Converting Colors with the new Membership Option!

The pro membership hides all ads, plus gives you double the colors in the color bucket, and more awesome pro features!

**[Learn more, Memberships starting at \\$2.50/m!](#)**

**Follow me  
on Twitter!**

@ConvertingColor