

Converting Colors

Hex(C4A797)

Have a look what the booklet for
Hex(C4A797) contains.

Hex(C4A797)	3
<i>Conversions</i>	4
<i>Details</i>	6
<i>Harmonies</i>	11
<i>Previews</i>	23
<i>Color Blindness Simulation</i>	26
<i>CSS Examples</i>	29

Color

Hex(C4A797)

Conversions

Conversions Part 1

Format	Color
Hex	C4A797
RGB	196, 167, 151
RGB Percent	77%, 65%, 59%
CMY	0.2314, 0.3451, 0.4078
CMYK	0.00, 0.15, 0.23, 0.23
HSL	21°, 28%, 68%
HSV	21°, 23%, 77%
XYZ	42.1696, 41.6076, 35.0866
YIQ	173.8470, 22.4200, 1.1720

Conversions

Conversions Part 2

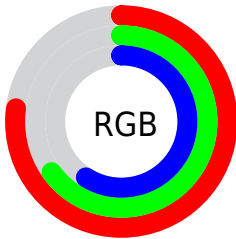
Format	Color
RYB	196, 176, 151
Decimal	12887959
CIELab	70.60, 8.08, 12.19
CIElCh	71, 14.625, 56.480
Yxy	41.6076, 0.3548, 0.3500
Android (android.graphics.Color)	4291078039 (0xFFC4A797)
YUV	173.8470, -11.2636, 19.4282
Hunter-Lab	64.5039, 3.8129, 12.9022

Details

The Hex color **C4A797** is a light color, and the websafe version is hex **CC9999**. A complement of this color would be **97B4C4**, and the grayscale version is **AEAEAE**.

A 20% lighter version of the original color is **FDDECD**, and **8E7364** is the 20% darker color. If you saturate the color by 10%, you get **C49A83**, and if you desaturate by 10%, it is **C4B4AB**.

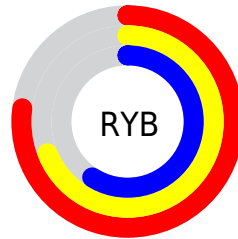
Distribution



Red (77%)

Green (65%)

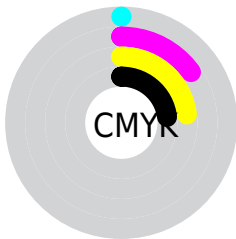
Blue (59%)



Red (77%)

Yellow (69%)

Blue (59%)

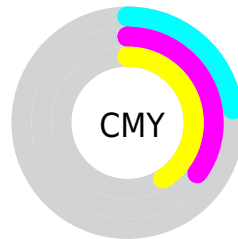


Cyan (0%)

Magenta (15%)

Yellow (23%)

Black (23%)



Cyan (23%)

Magenta (35%)

Yellow (41%)

Brightness & Saturation Gradients

These gradients show how the Hex color C4A797 changes by changing the brightness by 10 percent. The first figure shows a shift by +10% for each color and the second figure -10%.

Similar to the brightness gradients but the following saturation gradients show a change of the Hex color C4A797 by changing the saturation by 10% instead.



C4A797



C4A797

FFFFFF



A88D7D



FDDECD



8E7364



FFFBE9



745B4C



5B4335



422D20



2C1809



150000



000000



C4A797



C4A797

 C49A83

 C4B4AB

 C48E70

 C4C0BE

 C4815C

 C4CDD2

 C47449

 C4DAE5

 C46835

 C4E6F9

 C45B21

 C4F3FF

 C44F0E

 C4FFFF

 C44600

Harmonies

Analogous

The Analogous color harmony consists of three colors that are next to each other on the color wheel.



C9A4A1



C4A797



B9AB92

Triad

The Triadic color harmony groups three colors that are evenly spaced from another and form a triangle on the color wheel.



C4A797



8FB4AB



ADAAC4

Complementary

The Complementary color scheme is a pair of colors which are on the opposite of each other on the color wheel.



C4A797



97B4C4

Split Complementary

Split-complementary colors differ from the complementary color scheme. The scheme consists of three colors, the original color and two neighbors of the complement color.



9CAEC7



C4A797



8AB4B8

Square

The Square scheme is like the rectangle color scheme, but the four colors are evenly spaced on the color wheel.



C4A797



9BB39E



8FB2C2



BDA6BC

Rectangle

The Rectangle color scheme consists of four colors that form a rectangle on the color wheel.



C4A797



B0AE93



8FB2C2



A8ABC6

Sweetspot

The Sweet Spot groups the original color and five complimentary colors.



C4A797



FFF3ED



C497B4



807975



000000



808080

Same Dimension

The Same Dimension uses a secret algorithm to generate beautiful new colors.



C4A797



FFD1B8



C4BD97



615B57



A13900



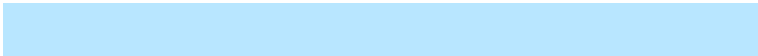
210C00

Inverse Universe

The Inverse Universe completely reimagines the original color for something new.



97B4C4



B8E6FF



979EC4



575D61



0068A1



001521

Previews

White Background



This preview shows how the Hex color C4A797 looks on a white background.

Color Contrast Check

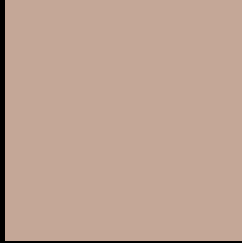
Large Text (above 18pt) WCAG AA × Fail

Any Text WCAG AA × Fail

Large Text (above 18pt) WCAG AAA × Fail

Any Text WCAG AAA × Fail

Black Background



This preview shows how the Hex color C4A797 looks on a black background.

Color Contrast Check

Large Text (above 18pt) WCAG AA ✓ Pass

Any Text WCAG AA ✓ Pass

Large Text (above 18pt) WCAG AAA ✓ Pass

Any Text WCAG AAA ✓ Pass

If you want to check with other color combinations, try the [Color Contrast Checker](#).

Hex C4A797 Background



This preview shows how black text looks on a background with the Hex color C4A797.



This preview shows how white text looks on a background with the Hex color C4A797.

Color Blindness Simulation

Color vision deficiency is a very complex topic, and I could not describe the different causes any better than Wikipedia does, so if you want to learn more, you should check out their [article about color blindness](#).

Dichromacy



Original Color
C4A797

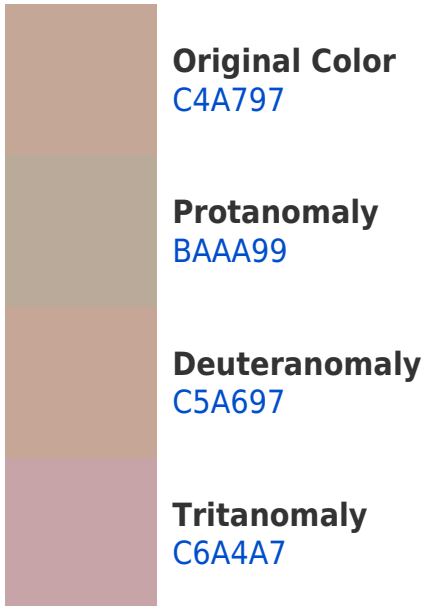
Protanopia
B4AC9A

Deuteranopia
C5A697



Tritanopia
C7A3B0

Trichromacy



Monochromacy



CSS Examples

Text

The CSS property to change the color of the text to Hex C4A797 is called "color". The color property can be set on classes, ids or directly on the HTML element.

This example shows how text in the color #C4A797 looks like.

```
.text, #text, p{  
    color:#C4A797  
}
```

If you want to add a text shadow in that color use the text-shadow property, you can generate a text shadow directly with our [CSS Text Shadow Generator](#).

Here you see how black text with a 4 pixel #C4A797 colored shadow looks like.

```
.shadow{ text-shadow: 4px 4px 2px #C4A797
}
```

Border

The CSS property to change the border of an element to Hex C4A797 is called "border". The border property can be set on classes, ids or directly on the HTML element.

This example shows the color as border, it can be applied via the CSS property "border" or "border-color".

```
.border, #border, table{ border:4px solid
#C4A797 }
```

If only the border color should be changed use the property `border-color`.

```
.border{ border-color:#C4A797 }
```

If you want to add a box shadow in that color use:

Here you see how a box with a 4 pixel #C4A797 colored shadow looks like.

```
.boxshadow{ -moz-box-shadow:4px 4px 4px  
4px #C4A797; -webkit-box-shadow:4px 4px  
4px 4px #C4A797; box-shadow:4px 4px 4px  
4px #C4A797 }
```

Background

The CSS property to change the background color of an element to Hex C4A797 is called "background". The background property can be set on classes, ids or directly on the HTML element.

```
.background, #background, body{  
background:#C4A797 }
```

If only the background color should be changed can be used:

```
.background{ background-color:#C4A797 }
```

This example shows the color as background, it is applied via the CSS property "background".

To optimize and compress your CSS code, you can use our [online CSS compressor and optimizer](#) based on csstidy. If you want to create a linear or radial gradient as background or border, check our [CSS Gradient Generator](#).

Hey! You found this booklet interesting? Support Converting Colors with the new Membership Option!

The pro membership hides all ads, plus gives you double the colors in the color bucket, and more awesome pro features!

[Learn more, Memberships starting at \\$2.50/m!](#)

**Follow me
on Twitter!**

@ConvertingColor