

Converting Colors

Hex(C4A7A2)

Have a look what the booklet for
Hex(C4A7A2) contains.

Hex(C4A7A2)	3
<i>Conversions</i>	4
<i>Details</i>	6
<i>Harmonies</i>	11
<i>Previews</i>	23
<i>Color Blindness Simulation</i>	26
<i>CSS Examples</i>	29

Color

Hex(C4A7A2)

Conversions

Conversions Part 1

Format	Color
Hex	C4A7A2
RGB	196, 167, 162
RGB Percent	77%, 65%, 64%
CMY	0.2314, 0.3451, 0.3647
CMYK	0.00, 0.15, 0.17, 0.23
HSL	9°, 22%, 70%
HSV	9°, 17%, 77%
XYZ	43.1053, 41.9818, 40.0138
YIQ	175.1010, 18.8890, 4.5930

Conversions

Conversions Part 2

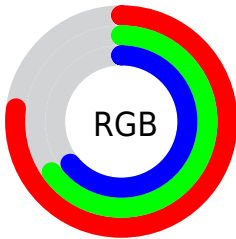
Format	Color
RYB	196, 168, 162
Decimal	12887970
CIELab	70.86, 9.76, 6.50
CIELCh	71, 11.726, 33.661
Yxy	41.9818, 0.3446, 0.3356
Android (android.graphics.Color)	4291078050 (0xFFC4A7A2)
YUV	175.1010, -6.4588, 18.3284
Hunter-Lab	64.7934, 5.3627, 8.7402

Details

The Hex color **C4A7A2** is a light color, and the websafe version is hex **CC9999**. A complement of this color would be **A2BFC4**, and the grayscale version is **AFAFAF**.

A 20% lighter version of the original color is **FDDED9**, and **8E736E** is the 20% darker color. If you saturate the color by 10%, you get **C4968E**, and if you desaturate by 10%, it is **C4B8B6**.

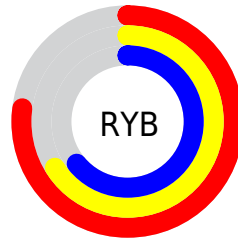
Distribution



Red (77%)

Green (65%)

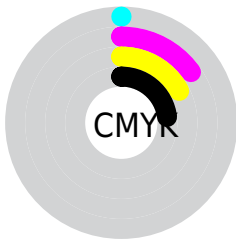
Blue (64%)



Red (77%)

Yellow (66%)

Blue (64%)

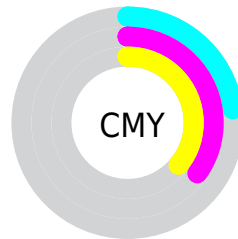


Cyan (0%)

Magenta (15%)

Yellow (17%)

Black (23%)



Cyan (23%)

Magenta (35%)

Yellow (36%)

Brightness & Saturation Gradients

These gradients show how the Hex color C4A7A2 changes by changing the brightness by 10 percent. The first figure shows a shift by +10% for each color and the second figure -10%.

Similar to the brightness gradients but the following saturation gradients show a change of the Hex color C4A7A2 by changing the saturation by 10% instead.



C4A7A2



C4A7A2

FFFFFF



A98D88



FDDED9



8E736E



FFFBF5



745A56



5B433F



432D29



2C1815



180000



000000



C4A7A2



C4A7A2

 C4968E

 C4B8B6

 C4867B

 C4C8C9

 C47567

 C4D9DD

 C46454

 C4EAF0

 C45340

 C4FBFF

 C4432C

 C4FFFF

 C43219

 C42105

 C41D00

Harmonies

Analogous

The Analogous color harmony consists of three colors that are next to each other on the color wheel.



C3A6AC



C4A7A2



BFAA9B

Triad

The Triadic color harmony groups three colors that are evenly spaced from another and form a triangle on the color wheel.



C4A7A2



9DB3A4



A4AEC2

Complementary

The Complementary color scheme is a pair of colors which are on the opposite of each other on the color wheel.



C4A7A2



A2BFC4

Split Complementary

Split-complementary colors differ from the complementary color scheme. The scheme consists of three colors, the original color and two neighbors of the complement color.



98B1C0



C4A7A2



95B4AE

Square

The Square scheme is like the rectangle color scheme, but the four colors are evenly spaced on the color wheel.



C4A7A2



A9B09C



93B3B9



B1AABF

Rectangle

The Rectangle color scheme consists of four colors that form a rectangle on the color wheel.



C4A7A2



B9AC98



93B3B9



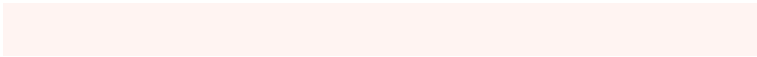
9FAFC2

Sweetspot

The Sweet Spot groups the original color and five complimentary colors.



C4A7A2



FFF4F2



C4A2BF



807978



000000



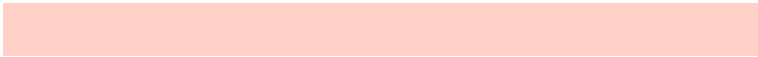
808080

Same Dimension

The Same Dimension uses a secret algorithm to generate beautiful new colors.



C4A7A2



FFD1C9



C4B8A2



615957



A11800



210500

Inverse Universe

The Inverse Universe completely reimagines the original color for something new.



A2BFC4



C9F7FF



A2AEC4



575F61



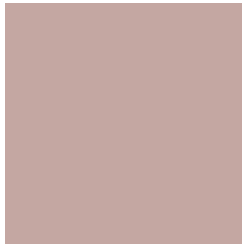
0089A1



001C21

Previews

White Background



This preview shows how the Hex color C4A7A2 looks on a white background.

Color Contrast Check

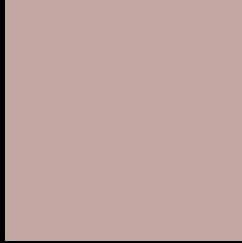
Large Text (above 18pt) WCAG AA × Fail

Any Text WCAG AA × Fail

Large Text (above 18pt) WCAG AAA × Fail

Any Text WCAG AAA × Fail

Black Background



This preview shows how the Hex color C4A7A2 looks on a black background.

Color Contrast Check

Large Text (above 18pt) WCAG AA ✓ Pass

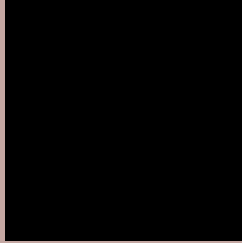
Any Text WCAG AA ✓ Pass

Large Text (above 18pt) WCAG AAA ✓ Pass

Any Text WCAG AAA ✓ Pass

If you want to check with other color combinations, try the [Color Contrast Checker](#).

Hex C4A7A2 Background



This preview shows how black text looks on a background with the Hex color C4A7A2.

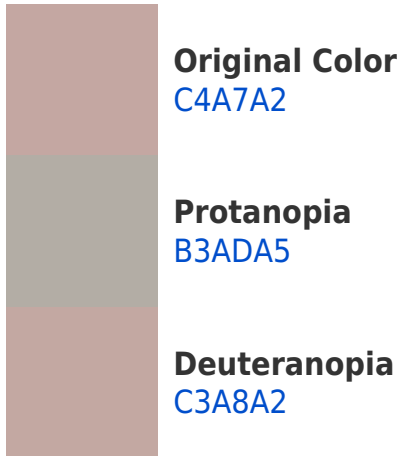


This preview shows how white text looks on a background with the Hex color C4A7A2.

Color Blindness Simulation

Color vision deficiency is a very complex topic, and I could not describe the different causes any better than Wikipedia does, so if you want to learn more, you should check out their [article about color blindness](#).

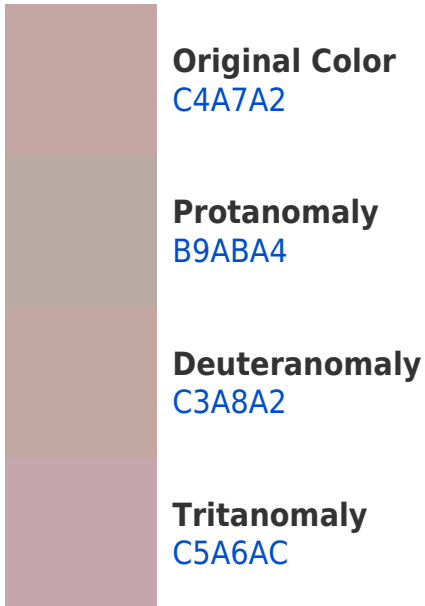
Dichromacy



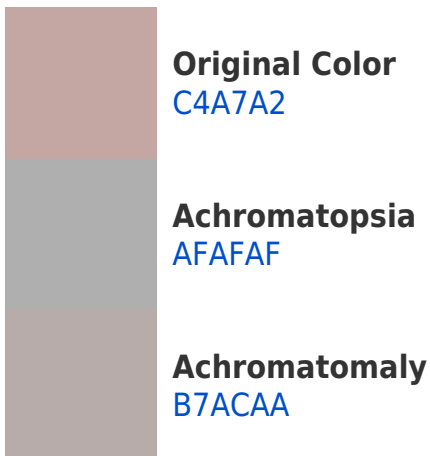


Tritanopia
C6A5B1

Trichromacy



Monochromacy



CSS Examples

Text

The CSS property to change the color of the text to Hex C4A7A2 is called "color". The color property can be set on classes, ids or directly on the HTML element.

This example shows how text in the color #C4A7A2 looks like.

```
.text, #text, p{  
    color:#C4A7A2  
}
```

If you want to add a text shadow in that color use the text-shadow property, you can generate a text shadow directly with our [CSS Text Shadow Generator](#).

Here you see how black text with a 4 pixel #C4A7A2 colored shadow looks like.

```
.shadow{ text-shadow: 4px 4px 2px #C4A7A2
}
```

Border

The CSS property to change the border of an element to Hex C4A7A2 is called "border". The border property can be set on classes, ids or directly on the HTML element.

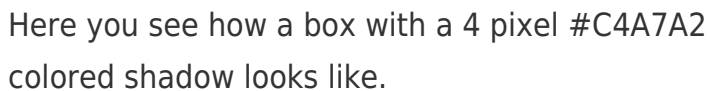
This example shows the color as border, it can be applied via the CSS property "border" or "border-color".

```
.border, #border, table{ border:4px solid
#C4A7A2 }
```

If only the border color should be changed use the property `border-color`.

```
.border{ border-color:#C4A7A2 }
```

If you want to add a box shadow in that color use:



Here you see how a box with a 4 pixel #C4A7A2 colored shadow looks like.

```
.boxshadow{ -moz-box-shadow:4px 4px 4px  
4px #C4A7A2; -webkit-box-shadow:4px 4px  
4px 4px #C4A7A2; box-shadow:4px 4px 4px  
4px #C4A7A2 }
```

Background

The CSS property to change the background color of an element to Hex C4A7A2 is called "background". The background property can be set on classes, ids or directly on the HTML element.

```
.background, #background, body{  
background:#C4A7A2 }
```

If only the background color should be changed can be used:

```
.background{ background-color:#C4A7A2 }
```

This example shows the color as background, it is applied via the CSS property "background".

To optimize and compress your CSS code, you can use our [online CSS compressor and optimizer](#) based on csstidy. If you want to create a linear or radial gradient as background or border, check our [CSS Gradient Generator](#).

Hey! You found this booklet interesting? Support Converting Colors with the new Membership Option!

The pro membership hides all ads, plus gives you double the colors in the color bucket, and more awesome pro features!

[Learn more, Memberships starting at \\$2.50/m!](#)

**Follow me
on Twitter!**

@ConvertingColor