

Converting Colors

Hex(C4AC9C)

Have a look what the booklet for
Hex(C4AC9C) contains.

Hex(C4AC9C)	3
<i>Conversions</i>	4
<i>Details</i>	6
<i>Harmonies</i>	11
<i>Previews</i>	23
<i>Color Blindness Simulation</i>	26
<i>CSS Examples</i>	29

Color

Hex(C4AC9C)

Conversions

Conversions Part 1

Format	Color
Hex	C4AC9C
RGB	196, 172, 156
RGB Percent	77%, 67%, 61%
CMY	0.2314, 0.3255, 0.3882
CMYK	0.00, 0.12, 0.20, 0.23
HSL	24°, 25%, 69%
HSV	24°, 20%, 77%
XYZ	43.5182, 43.6411, 37.5824
YIQ	177.3520, 19.4400, 0.1120

Conversions

Conversions Part 2

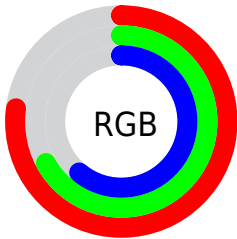
Format	Color
R_{YB}	196, 183, 156
Decimal	12889244
CIE _{Lab}	71.99, 6.11, 11.41
CIE _{LCh}	72, 12.945, 61.814
Yxy	43.6411, 0.3489, 0.3499
Android (android.graphics.Color)	4291079324 (0xFFC4AC9C)
YUV	177.3520, -10.5265, 16.3543
Hunter-Lab	66.0614, 1.9801, 12.5129

Details

The Hex color **C4AC9C** is a light color, and the websafe version is hex **CC9999**. A complement of this color would be **9CB4C4**, and the grayscale version is **B1B1B1**.

A 20% lighter version of the original color is **FDE3D2**, and **8E7869** is the 20% darker color. If you saturate the color by 10%, you get **C4A088**, and if you desaturate by 10%, it is **C4B8B0**.

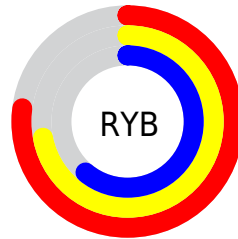
Distribution



Red (77%)

Green (67%)

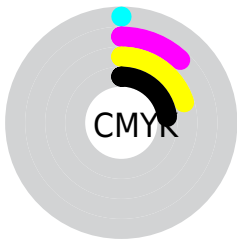
Blue (61%)



Red (77%)

Yellow (72%)

Blue (61%)

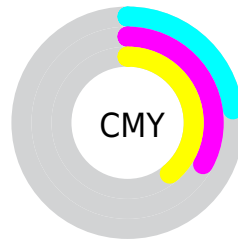


Cyan (0%)

Magenta (12%)

Yellow (20%)

Black (23%)



Cyan (23%)

Magenta (33%)

Yellow (39%)

Brightness & Saturation Gradients

These gradients show how the Hex color C4AC9C changes by changing the brightness by 10 percent. The first figure shows a shift by +10% for each color and the second figure -10%.

Similar to the brightness gradients but the following saturation gradients show a change of the Hex color C4AC9C by changing the saturation by 10% instead.

 C4AC9C

FFFFFF

 FDE3D2

 FFFFEE

 C4AC9C

 A99182

 8E7869

 745F51

 5B473A

 433124

 2C1C0F

 160200

 000000

 C4AC9C

 C4AC9C

 C4A088

 C4B8B0

 C49475

 C4C4C3

 C48961

 C4CFD7

 C47D4E

 C4DBEA

 C4713A

 C4E7FE

 C46526

 C4F3FF

 C45A13

 C4FEFF

 C44E00

 C4FFFF

Harmonies

Analogous

The Analogous color harmony consists of three colors that are next to each other on the color wheel.



CAA9A4



C4AC9C



B9B099

Triad

The Triadic color harmony groups three colors that are evenly spaced from another and form a triangle on the color wheel.



C4AC9C



95B7B1



B4ADC4

Complementary

The Complementary color scheme is a pair of colors which are on the opposite of each other on the color wheel.



C4AC9C



9CB4C4

Split Complementary

Split-complementary colors differ from the complementary color scheme. The scheme consists of three colors, the original color and two neighbors of the complement color.



A5B1C8



C4AC9C



92B7BC

Square

The Square scheme is like the rectangle color scheme, but the four colors are evenly spaced on the color wheel.



C4AC9C



9FB6A5



98B5C5



C1AABC

Rectangle

The Rectangle color scheme consists of four colors that form a rectangle on the color wheel.



C4AC9C



B1B29A



98B5C5



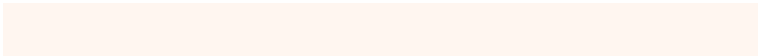
AFAFC6

Sweetspot

The Sweet Spot groups the original color and five complimentary colors.



C4AC9C



FFF6F0



C49CB4



807A77



000000



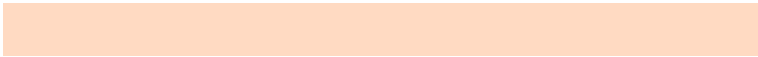
808080

Same Dimension

The Same Dimension uses a secret algorithm to generate beautiful new colors.



C4AC9C



FFDAC2



C4C09C



615B57



A14000



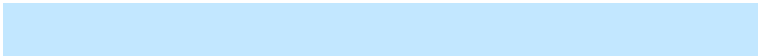
210D00

Inverse Universe

The Inverse Universe completely reimagines the original color for something new.



9CB4C4



C2E7FF



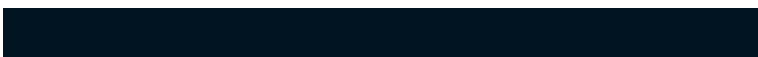
9CA0C4



575D61



0060A1



001421

Previews

White Background



This preview shows how the Hex color C4AC9C looks on a white background.

Color Contrast Check

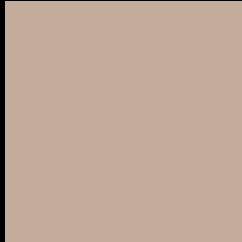
Large Text (above 18pt) WCAG AA × Fail

Any Text WCAG AA × Fail

Large Text (above 18pt) WCAG AAA × Fail

Any Text WCAG AAA × Fail

Black Background



This preview shows how the Hex color C4AC9C looks on a black background.

Color Contrast Check

Large Text (above 18pt) WCAG AA ✓ Pass

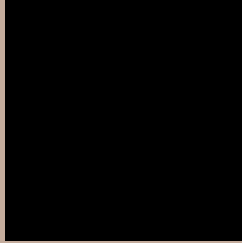
Any Text WCAG AA ✓ Pass

Large Text (above 18pt) WCAG AAA ✓ Pass

Any Text WCAG AAA ✓ Pass

If you want to check with other color combinations, try the [Color Contrast Checker](#).

Hex C4AC9C Background



This preview shows how black text looks on a background with the Hex color C4AC9C.



This preview shows how white text looks on a background with the Hex color C4AC9C.

Color Blindness Simulation

Color vision deficiency is a very complex topic, and I could not describe the different causes any better than Wikipedia does, so if you want to learn more, you should check out their [article about color blindness](#).

Dichromacy



Original Color
C4AC9C

Protanopia
B8B09E

Deuteranopia
C9AA9C



Tritanopia
C7A8B5

Trichromacy



Original Color
C4AC9C

Protanomaly
BCAF9D

Deuteranomaly
C7AB9C

Tritanomaly
C6A9AC

Monochromacy



Original Color
C4AC9C

Achromatopsia
B1B1B1

Achromatomaly
B8AFA9

CSS Examples

Text

The CSS property to change the color of the text to Hex C4AC9C is called "color". The color property can be set on classes, ids or directly on the HTML element.

This example shows how text in the color #C4AC9C looks like.

```
.text, #text, p{  
    color:#C4AC9C  
}
```

If you want to add a text shadow in that color use the text-shadow property, you can generate a text shadow directly with our [CSS Text Shadow Generator](#).

Here you see how black text with a 4 pixel #C4AC9C colored shadow looks like.

```
.shadow{ text-shadow: 4px 4px 2px #C4AC9C
}
```

Border

The CSS property to change the border of an element to Hex C4AC9C is called "border". The border property can be set on classes, ids or directly on the HTML element.

This example shows the color as border, it can be applied via the CSS property "border" or "border-color".

```
.border, #border, table{ border:4px solid
#C4AC9C }
```

If only the border color should be changed use the property `border-color`.

```
.border{ border-color:#C4AC9C }
```

If you want to add a box shadow in that color use:

Here you see how a box with a 4 pixel #C4AC9C colored shadow looks like.

```
.boxshadow{ -moz-box-shadow:4px 4px 4px  
4px #C4AC9C; -webkit-box-shadow:4px 4px  
4px 4px #C4AC9C; box-shadow:4px 4px 4px  
4px #C4AC9C }
```

Background

The CSS property to change the background color of an element to Hex C4AC9C is called "background". The background property can be set on classes, ids or directly on the HTML element.

```
.background, #background, body{  
background:#C4AC9C }
```

If only the background color should be changed can be used:

```
.background{ background-color:#C4AC9C }
```

This example shows the color as background, it is applied via the CSS property "background".

To optimize and compress your CSS code, you can use our [online CSS compressor and optimizer](#) based on csstidy. If you want to create a linear or radial gradient as background or border, check our [CSS Gradient Generator](#).

Hey! You found this booklet interesting? Support Converting Colors with the new Membership Option!

The pro membership hides all ads, plus gives you double the colors in the color bucket, and more awesome pro features!

[Learn more, Memberships starting at \\$2.50/m!](#)

**Follow me
on Twitter!**

@ConvertingColor