

Converting Colors

Hex(C4ADB4)

Have a look what the booklet for
Hex(C4ADB4) contains.

Hex(C4ADB4)	3
<i>Conversions</i>	4
<i>Details</i>	6
<i>Harmonies</i>	11
<i>Previews</i>	23
<i>Color Blindness Simulation</i>	26
<i>CSS Examples</i>	29

Color

Hex(C4ADB4)

Conversions

Conversions Part 1

Format	Color
Hex	C4ADB4
RGB	196, 173, 180
RGB Percent	77%, 68%, 71%
CMY	0.2314, 0.3216, 0.2941
CMYK	0.00, 0.12, 0.08, 0.23
HSL	342°, 16%, 72%
HSV	342°, 12%, 77%
XYZ	45.9467, 44.9182, 49.4284
YIQ	180.6750, 11.4610, 7.0530

Conversions

Conversions Part 2

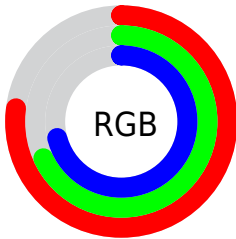
Format	Color
R _Y B	196, 173, 180
Decimal	12889524
CIE Lab	72.84, 9.49, -0.54
CIE LCh	73, 9.505, 356.736
Yxy	44.9182, 0.3275, 0.3202
Android (android.graphics.Color)	4291079604 (0xFFC4ADB4)
YUV	180.6750, -0.3328, 13.4400
Hunter-Lab	67.0210, 5.0851, 3.1880

Details

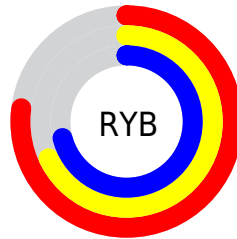
The Hex color **C4ADB4** is a light color, and the websafe version is hex **CCCCCC**. A complement of this color would be **ADC4BD**, and the grayscale version is **B5B5B5**.

A 20% lighter version of the original color is **FDE4EC**, and **8E797F** is the 20% darker color. If you saturate the color by 10%, you get **C499A6**, and if you desaturate by 10%, it is **C4C1C2**.

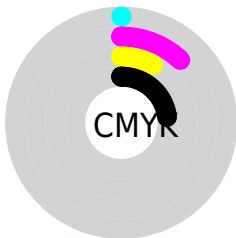
Distribution



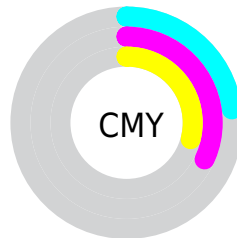
- Red (77%)
- Green (68%)
- Blue (71%)



- Red (77%)
- Yellow (68%)
- Blue (71%)



- Cyan (0%)
- Magenta (12%)
- Yellow (8%)
- Black (23%)



- Cyan (23%)
- Magenta (32%)
- Yellow (29%)

Brightness & Saturation Gradients

These gradients show how the Hex color C4ADB4 changes by changing the brightness by 10 percent. The first figure shows a shift by +10% for each color and the second figure -10%.

Similar to the brightness gradients but the following saturation gradients show a change of the Hex color C4ADB4 by changing the saturation by 10% instead.

 C4ADB4

 C4ADB4

FFFFFF

 A99299

 FDE4EC

 8E797F

 746066

 5C484E

 443238

 2D1C22

 1A030C

 000000

 C4ADB4

 C4ADB4

 C499A6

 C4C1C2

 C48699

 C4D4CF

 C4728B

 C4E8DD

 C45F7D

 C4FBEB

 C44B70

 C4FFF8

 C43762

 C4FFFF

 C42455

 C41047

 C4003C

Harmonies

Analogous

The Analogous color harmony consists of three colors that are next to each other on the color wheel.



BDAEBC



C4ADB4



C6ADAB

Triad

The Triadic color harmony groups three colors that are evenly spaced from another and form a triangle on the color wheel.



C4ADB4



B1B5A3



A0B6C1

Complementary

The Complementary color scheme is a pair of colors which are on the opposite of each other on the color wheel.



C4ADB4



ADC4BD

Split Complementary

Split-complementary colors differ from the complementary color scheme. The scheme consists of three colors, the original color and two neighbors of the complement color.



9DB8BA



C4ADB4



A7B7A9

Square

The Square scheme is like the rectangle color scheme, but the four colors are evenly spaced on the color wheel.



C4ADB4



BBB2A2



A0B8B1



A9B4C4

Rectangle

The Rectangle color scheme consists of four colors that form a rectangle on the color wheel.



C4ADB4



C4AEA6



A0B8B1



9FB7BF

Sweetspot

The Sweet Spot groups the original color and five complimentary colors.



C4ADB4



FFF5F8



BDADC4



80797B



000000



808080

Same Dimension

The Same Dimension uses a secret algorithm to generate beautiful new colors.



C4ADB4



FFDBE6



C4B1AD



61575A



A10031



21000A

Inverse Universe

The Inverse Universe completely reimagines the original color for something new.



C4ADB4



FFDBE6



ADC0C4



61575A



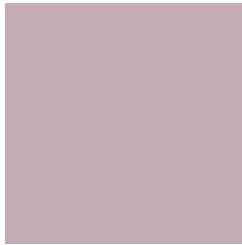
A10031



21000A

Previews

White Background



This preview shows how the Hex color C4ADB4 looks on a white background.

Color Contrast Check

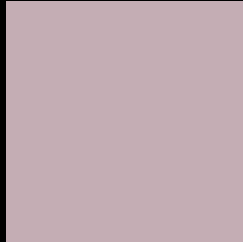
Large Text (above 18pt) WCAG AA × Fail

Any Text WCAG AA × Fail

Large Text (above 18pt) WCAG AAA × Fail

Any Text WCAG AAA × Fail

Black Background



This preview shows how the Hex color C4ADB4 looks on a black background.

Color Contrast Check

Large Text (above 18pt) WCAG AA ✓ Pass

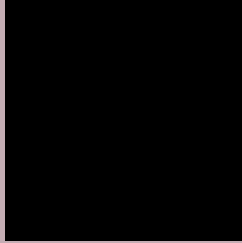
Any Text WCAG AA ✓ Pass

Large Text (above 18pt) WCAG AAA ✓ Pass

Any Text WCAG AAA ✓ Pass

If you want to check with other color combinations, try the [Color Contrast Checker](#).

Hex C4ADB4 Background



This preview shows how black text looks on a background with the Hex color C4ADB4.



This preview shows how white text looks on a background with the Hex color C4ADB4.

Color Blindness Simulation

Color vision deficiency is a very complex topic, and I could not describe the different causes any better than Wikipedia does, so if you want to learn more, you should check out their [article about color blindness](#).

Dichromacy





Tritanopia
C5ACBA

Trichromacy



Original Color
C4ADB4

Protanomaly
BAB0B6

Deuteranomaly
C3ADB4

Tritanomaly
C5ACB8

Monochromacy



Original Color
C4ADB4

Achromatopsia
B5B5B5

Achromatomaly
BAB2B5

CSS Examples

Text

The CSS property to change the color of the text to Hex C4ADB4 is called "color". The color property can be set on classes, ids or directly on the HTML element.

This example shows how text in the color #C4ADB4 looks like.

```
.text, #text, p{  
    color:#C4ADB4  
}
```

If you want to add a text shadow in that color use the text-shadow property, you can generate a text shadow directly with our [CSS Text Shadow Generator](#).

Here you see how black text with a 4 pixel #C4ADB4 colored shadow looks like.

```
.shadow{ text-shadow: 4px 4px 2px #C4ADB4
}
```

Border

The CSS property to change the border of an element to Hex C4ADB4 is called "border". The border property can be set on classes, ids or directly on the HTML element.

This example shows the color as border, it can be applied via the CSS property "border" or "border-color".

```
.border, #border, table{ border:4px solid
#C4ADB4 }
```

If only the border color should be changed use the property `border-color`.

```
.border{ border-color:#C4ADB4 }
```

If you want to add a box shadow in that color use:

Here you see how a box with a 4 pixel #C4ADB4 colored shadow looks like.

```
.boxshadow{ -moz-box-shadow:4px 4px 4px  
4px #C4ADB4; -webkit-box-shadow:4px 4px  
4px 4px #C4ADB4; box-shadow:4px 4px 4px  
4px #C4ADB4 }
```

Background

The CSS property to change the background color of an element to Hex C4ADB4 is called "background". The background property can be set on classes, ids or directly on the HTML element.

```
.background, #background, body{  
background:#C4ADB4 }
```

If only the background color should be changed can be used:

```
.background{ background-color:#C4ADB4 }
```

This example shows the color as background, it is applied via the CSS property "background".

To optimize and compress your CSS code, you can use our [online CSS compressor and optimizer](#) based on csstidy. If you want to create a linear or radial gradient as background or border, check our [CSS Gradient Generator](#).

Hey! You found this booklet interesting? Support Converting Colors with the new Membership Option!

The pro membership hides all ads, plus gives you double the colors in the color bucket, and more awesome pro features!

[Learn more, Memberships starting at \\$2.50/m!](#)

**Follow me
on Twitter!**

@ConvertingColor