

Converting Colors

Hex(C4AEB6)

Have a look what the booklet for
Hex(C4AEB6) contains.

Hex(C4AEB6)	3
<i>Conversions</i>	4
<i>Details</i>	6
<i>Harmonies</i>	11
<i>Previews</i>	23
<i>Color Blindness Simulation</i>	26
<i>CSS Examples</i>	29

Color

Hex(C4AEB6)

Conversions

Conversions Part 1

Format	Color
Hex	C4AEB6
RGB	196, 174, 182
RGB Percent	77%, 68%, 71%
CMY	0.2314, 0.3176, 0.2863
CMYK	0.00, 0.11, 0.07, 0.23
HSL	338°, 16%, 73%
HSV	338°, 11%, 77%
XYZ	46.3445, 45.3853, 50.5736
YIQ	181.4900, 10.5440, 7.1520

Conversions

Conversions Part 2

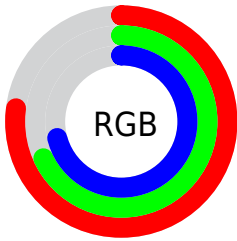
Format	Color
R _Y B	196, 174, 182
Decimal	12889782
CIE Lab	73.14, 9.30, -1.19
CIE LCh	73, 9.372, 352.705
Yxy	45.3853, 0.3257, 0.3189
Android (android.graphics.Color)	4291079862 (0xFFC4AEB6)
YUV	181.4900, 0.2514, 12.7253
Hunter-Lab	67.3686, 4.8995, 2.6490

Details

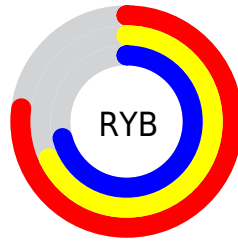
The Hex color **C4AEB6** is a light color, and the websafe version is hex **CCCCCC**. A complement of this color would be **AEC4BC**, and the grayscale version is **B5B5B5**.

A 20% lighter version of the original color is **FDE5EE**, and **8E7A81** is the 20% darker color. If you saturate the color by 10%, you get **C49AAA**, and if you desaturate by 10%, it is **C4C2C2**.

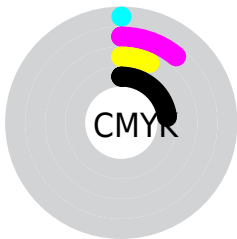
Distribution



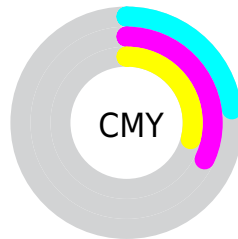
- Red (77%)
- Green (68%)
- Blue (71%)



- Red (77%)
- Yellow (68%)
- Blue (71%)



- Cyan (0%)
- Magenta (11%)
- Yellow (7%)
- Black (23%)



- Cyan (23%)
- Magenta (32%)
- Yellow (29%)

Brightness & Saturation Gradients

These gradients show how the Hex color C4AEB6 changes by changing the brightness by 10 percent. The first figure shows a shift by +10% for each color and the second figure -10%.

Similar to the brightness gradients but the following saturation gradients show a change of the Hex color C4AEB6 by changing the saturation by 10% instead.

 C4AEB6

 C4AEB6

FFFFFF

 A9939B

 FDE5EE

 8E7A81

 756168

 5C4950

 443239

 2E1D24

 1A040E

 000000

 C4AEB6

 C4AEB6

 C49AAA

 C4C2C2

 C4879D

 C4D5CF

 C47391

 C4E9DB

 C46084

 C4FCE8

 C44C78

 C4FFF4

 C4386B

 C4FFFF

 C4255F

 C41152

 C40047

Harmonies

Analogous

The Analogous color harmony consists of three colors that are next to each other on the color wheel.



BDB0BE



C4AEB6



C6AEAD

Triad

The Triadic color harmony groups three colors that are evenly spaced from another and form a triangle on the color wheel.



C4AEB6



B4B5A4



A1B7C1

Complementary

The Complementary color scheme is a pair of colors which are on the opposite of each other on the color wheel.



C4AEB6



AEC4BC

Split Complementary

Split-complementary colors differ from the complementary color scheme. The scheme consists of three colors, the original color and two neighbors of the complement color.



9EB9BA



C4AEB6



AAB7A9

Square

The Square scheme is like the rectangle color scheme, but the four colors are evenly spaced on the color wheel.



C4AEB6



BDB2A3



A2B9B1



A8B5C4

Rectangle

The Rectangle color scheme consists of four colors that form a rectangle on the color wheel.



C4AEB6



C5AFA8



A2B9B1



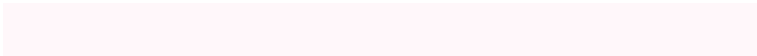
9FB8BF

Sweetspot

The Sweet Spot groups the original color and five complimentary colors.



C4AEB6



FFF7FA



BCAEC4



807A7C



000000



808080

Same Dimension

The Same Dimension uses a secret algorithm to generate beautiful new colors.



C4AEB6



FFDEEA



C4B1AE



61575B



A1003A



21000C

Inverse Universe

The Inverse Universe completely reimagines the original color for something new.



C4AEB6



FFDEEA



AEC1C4



61575B



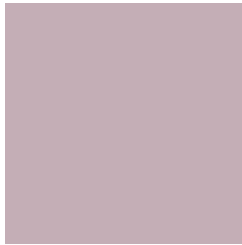
A1003A



21000C

Previews

White Background



This preview shows how the Hex color C4AEB6 looks on a white background.

Color Contrast Check

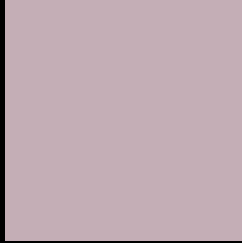
Large Text (above 18pt) WCAG AA × Fail

Any Text WCAG AA × Fail

Large Text (above 18pt) WCAG AAA × Fail

Any Text WCAG AAA × Fail

Black Background



This preview shows how the Hex color C4AEB6 looks on a black background.

Color Contrast Check

Large Text (above 18pt) WCAG AA ✓ Pass

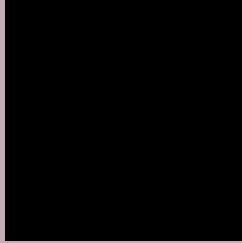
Any Text WCAG AA ✓ Pass

Large Text (above 18pt) WCAG AAA ✓ Pass

Any Text WCAG AAA ✓ Pass

If you want to check with other color combinations, try the [Color Contrast Checker](#).

Hex C4AEB6 Background



This preview shows how black text looks on a background with the Hex color C4AEB6.



This preview shows how white text looks on a background with the Hex color C4AEB6.

Color Blindness Simulation

Color vision deficiency is a very complex topic, and I could not describe the different causes any better than Wikipedia does, so if you want to learn more, you should check out their [article about color blindness](#).

Dichromacy





Tritanopia
C5ADBB

Trichromacy



Original Color
C4AEB6

Protanomaly
BAB1B8

Deuteranomaly
C4AEB6

Tritanomaly
C5ADB9

Monochromacy



Original Color
C4AEB6

Achromatopsia
B5B5B5

Achromatomaly
BAB2B5

CSS Examples

Text

The CSS property to change the color of the text to Hex C4AEB6 is called "color". The color property can be set on classes, ids or directly on the HTML element.

This example shows how text in the color #C4AEB6 looks like.

```
.text, #text, p{  
    color:#C4AEB6  
}
```

If you want to add a text shadow in that color use the text-shadow property, you can generate a text shadow directly with our [CSS Text Shadow Generator](#).

Here you see how black text with a 4 pixel #C4AEB6 colored shadow looks like.

```
.shadow{ text-shadow: 4px 4px 2px #C4AEB6
}
```

Border

The CSS property to change the border of an element to Hex C4AEB6 is called "border". The border property can be set on classes, ids or directly on the HTML element.

This example shows the color as border, it can be applied via the CSS property "border" or "border-color".

```
.border, #border, table{ border:4px solid
#C4AEB6 }
```

If only the border color should be changed use the property `border-color`.

```
.border{ border-color:#C4AEB6 }
```

If you want to add a box shadow in that color use:

Here you see how a box with a 4 pixel #C4AEB6 colored shadow looks like.

```
.boxshadow{ -moz-box-shadow:4px 4px 4px  
4px #C4AEB6; -webkit-box-shadow:4px 4px  
4px 4px #C4AEB6; box-shadow:4px 4px 4px  
4px #C4AEB6 }
```

Background

The CSS property to change the background color of an element to Hex C4AEB6 is called "background". The background property can be set on classes, ids or directly on the HTML element.

```
.background, #background, body{  
background:#C4AEB6 }
```

If only the background color should be changed can be used:

```
.background{ background-color:#C4AEB6 }
```

This example shows the color as background, it is applied via the CSS property "background".

To optimize and compress your CSS code, you can use our [online CSS compressor and optimizer](#) based on csstidy. If you want to create a linear or radial gradient as background or border, check our [CSS Gradient Generator](#).

Hey! You found this booklet interesting? Support Converting Colors with the new Membership Option!

The pro membership hides all ads, plus gives you double the colors in the color bucket, and more awesome pro features!

[Learn more, Memberships starting at \\$2.50/m!](#)

**Follow me
on Twitter!**

@ConvertingColor