

Converting Colors

Hex(C4AFAE)

Have a look what the booklet for
Hex(C4AFAE) contains.

Hex(C4AFAE)	3
<i>Conversions</i>	4
<i>Details</i>	6
<i>Harmonies</i>	11
<i>Previews</i>	23
<i>Color Blindness Simulation</i>	26
<i>CSS Examples</i>	29

Color

Hex(C4AFAE)

Conversions

Conversions Part 1

Format	Color
Hex	C4AFAE
RGB	196, 175, 174
RGB Percent	77%, 69%, 68%
CMY	0.2314, 0.3137, 0.3176
CMYK	0.00, 0.11, 0.11, 0.23
HSL	3°, 16%, 73%
HSV	3°, 11%, 77%
XYZ	45.7349, 45.4517, 46.4070
YIQ	181.1650, 12.8370, 4.1410

Conversions

Conversions Part 2

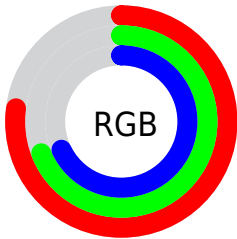
Format	Color
RYB	196, 175, 174
Decimal	12890030
CIELab	73.19, 7.38, 3.26
CIELCh	73, 8.064, 23.853
Yxy	45.4517, 0.3324, 0.3303
Android (android.graphics.Color)	4291080110 (0xFFC4AFAE)
YUV	181.1650, -3.5323, 13.0103
Hunter-Lab	67.4179, 3.1095, 6.3804

Details

The Hex color **C4AFAE** is a light color, and the websafe version is hex **CCCCCC**. A complement of this color would be **AEC3C4**, and the grayscale version is **B5B5B5**.

A 20% lighter version of the original color is **FDE7E5**, and **8E7B7A** is the 20% darker color. If you saturate the color by 10%, you get **C49C9A**, and if you desaturate by 10%, it is **C4C2C2**.

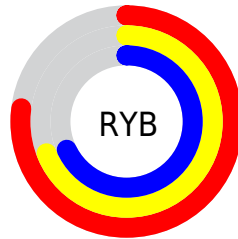
Distribution



Red (77%)

Green (69%)

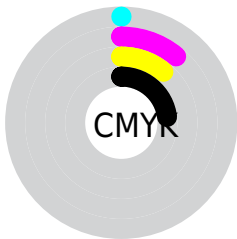
Blue (68%)



Red (77%)

Yellow (69%)

Blue (68%)

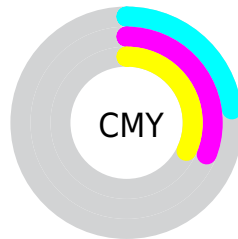


Cyan (0%)

Magenta (11%)

Yellow (11%)

Black (23%)



Cyan (23%)

Magenta (31%)

Yellow (32%)

Brightness & Saturation Gradients

These gradients show how the Hex color C4AFAE changes by changing the brightness by 10 percent. The first figure shows a shift by +10% for each color and the second figure -10%.

Similar to the brightness gradients but the following saturation gradients show a change of the Hex color C4AFAE by changing the saturation by 10% instead.

 C4AFAE

 C4AFAE

FFFFFF

 A99493

 FDE7E5

 8E7B7A

 746261

 5C4A49

 443333

 2D1E1E

 1A0604

 000000

 C4AFAE

 C4AFAE

 C49C9A

 C4C2C2

 C48A87

 C4D4D5

 C47773

 C4E7E9

 C46460

 C4FAFC

 C4514C

 C4FFFF

 C43F38

 C42C25

 C41911

 C40900

Harmonies

Analogous

The Analogous color harmony consists of three colors that are next to each other on the color wheel.



C2AFB5



C4AFAE



C2B0A8

Triad

The Triadic color harmony groups three colors that are evenly spaced from another and form a triangle on the color wheel.



C4AFAE



ABB7AB



AAB5C2

Complementary

The Complementary color scheme is a pair of colors which are on the opposite of each other on the color wheel.



C4AFAE



AEC3C4

Split Complementary

Split-complementary colors differ from the complementary color scheme. The scheme consists of three colors, the original color and two neighbors of the complement color.



A4B7BF



C4AFAE



A4B8B2

Square

The Square scheme is like the rectangle color scheme, but the four colors are evenly spaced on the color wheel.



C4AFAE



B3B5A6



A2B8B9



B3B2C1

Rectangle

The Rectangle color scheme consists of four colors that form a rectangle on the color wheel.



C4AFAE



BEB2A6



A2B8B9



A8B6C2

Sweetspot

The Sweet Spot groups the original color and five complimentary colors.



C4AFAE



FFF8F7



C4AEC3



807B7A



000000



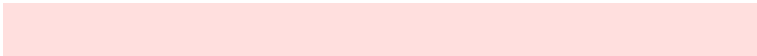
808080

Same Dimension

The Same Dimension uses a secret algorithm to generate beautiful new colors.



C4AFAE



FFDFDE



C4BAAE



615857



A10700



210200

Inverse Universe

The Inverse Universe completely reimagines the original color for something new.



AEC3C4



DEFDFE



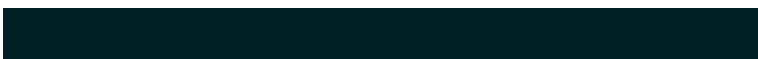
AEB8C4



576061



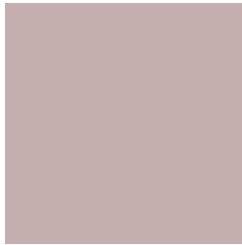
0099A1



002021

Previews

White Background



This preview shows how the Hex color C4AFAE looks on a white background.

Color Contrast Check

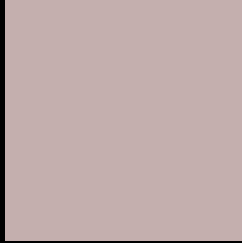
Large Text (above 18pt) WCAG AA × Fail

Any Text WCAG AA × Fail

Large Text (above 18pt) WCAG AAA × Fail

Any Text WCAG AAA × Fail

Black Background



This preview shows how the Hex color C4AFAE looks on a black background.

Color Contrast Check

Large Text (above 18pt) WCAG AA ✓ Pass

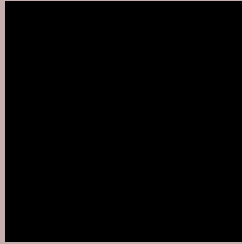
Any Text WCAG AA ✓ Pass

Large Text (above 18pt) WCAG AAA ✓ Pass

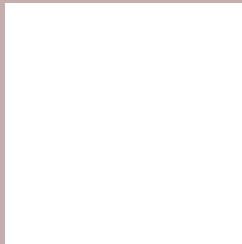
Any Text WCAG AAA ✓ Pass

If you want to check with other color combinations, try the [Color Contrast Checker](#).

Hex C4AFAE Background



This preview shows how black text looks on a background with the Hex color C4AFAE.




This preview shows how white text looks on a background with the Hex color C4AFAE.

Color Blindness Simulation

Color vision deficiency is a very complex topic, and I could not describe the different causes any better than Wikipedia does, so if you want to learn more, you should check out their [article about color blindness](#).

Dichromacy





Tritanopia
C6ADBB

Trichromacy



Original Color
C4AFAE

Protanomaly
BCB2AF

Deuteranomaly
C6AEAE

Tritanomaly
C5AEB6

Monochromacy



Original Color
C4AFAE

Achromatopsia
B5B5B5

Achromatomaly
BAB3B2

CSS Examples

Text

The CSS property to change the color of the text to Hex C4AFAE is called "color". The color property can be set on classes, ids or directly on the HTML element.

This example shows how text in the color #C4AFAE looks like.

```
.text, #text, p{  
    color:#C4AFAE  
}
```

If you want to add a text shadow in that color use the text-shadow property, you can generate a text shadow directly with our [CSS Text Shadow Generator](#).

Here you see how black text with a 4 pixel #C4AFAE colored shadow looks like.

```
.shadow{ text-shadow: 4px 4px 2px #C4AFAE
}
```

Border

The CSS property to change the border of an element to Hex C4AFAE is called "border". The border property can be set on classes, ids or directly on the HTML element.

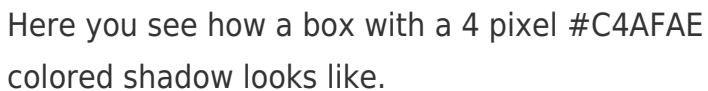
This example shows the color as border, it can be applied via the CSS property "border" or "border-color".

```
.border, #border, table{ border:4px solid
#C4AFAE }
```

If only the border color should be changed use the property `border-color`.

```
.border{ border-color:#C4AFAE }
```

If you want to add a box shadow in that color use:



Here you see how a box with a 4 pixel #C4AFAE colored shadow looks like.

```
.boxshadow{ -moz-box-shadow:4px 4px 4px  
4px #C4AFAE; -webkit-box-shadow:4px 4px  
4px 4px #C4AFAE; box-shadow:4px 4px 4px  
4px #C4AFAE }
```

Background

The CSS property to change the background color of an element to Hex C4AFAE is called "background". The background property can be set on classes, ids or directly on the HTML element.

```
.background, #background, body{  
background:#C4AFAE }
```

If only the background color should be changed can be used:

```
.background{ background-color:#C4AFAE }
```

This example shows the color as background, it is applied via the CSS property "background".

To optimize and compress your CSS code, you can use our [online CSS compressor and optimizer](#) based on csstidy. If you want to create a linear or radial gradient as background or border, check our [CSS Gradient Generator](#).

Hey! You found this booklet interesting? Support Converting Colors with the new Membership Option!

The pro membership hides all ads, plus gives you double the colors in the color bucket, and more awesome pro features!

[Learn more, Memberships starting at \\$2.50/m!](#)

**Follow me
on Twitter!**

@ConvertingColor