

Converting Colors

Hex(C4AFB3)

Have a look what the booklet for
Hex(C4AFB3) contains.

Hex(C4AFB3)	3
<i>Conversions</i>	4
<i>Details</i>	6
<i>Harmonies</i>	11
<i>Previews</i>	23
<i>Color Blindness Simulation</i>	26
<i>CSS Examples</i>	29

Color

Hex(C4AFB3)

Conversions

Conversions Part 1

Format	Color
Hex	C4AFB3
RGB	196, 175, 179
RGB Percent	77%, 69%, 70%
CMY	0.2314, 0.3137, 0.2980
CMYK	0.00, 0.11, 0.09, 0.23
HSL	349°, 15%, 73%
HSV	349°, 11%, 77%
XYZ	46.2316, 45.6504, 49.0226
YIQ	181.7350, 11.2320, 5.6960

Conversions

Conversions Part 2

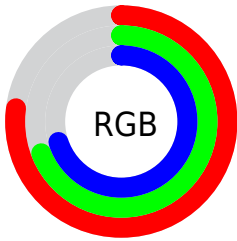
Format	Color
R_{YB}	196, 175, 179
Decimal	12890035
CIE Lab	73.32, 8.23, 0.71
CIE LCh	73, 8.260, 4.921
Yxy	45.6504, 0.3281, 0.3240
Android (android.graphics.Color)	4291080115 (0xFFC4AFB3)
YUV	181.7350, -1.3484, 12.5104
Hunter-Lab	67.5651, 3.9003, 4.2770

Details

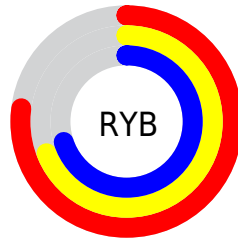
The Hex color **C4AFB3** is a light color, and the websafe version is hex **CCCCCC**. A complement of this color would be **AFC4C0**, and the grayscale version is **B6B6B6**.

A 20% lighter version of the original color is **FDE7EB**, and **8E7B7E** is the 20% darker color. If you saturate the color by 10%, you get **C49BA3**, and if you desaturate by 10%, it is **C4C3C3**.

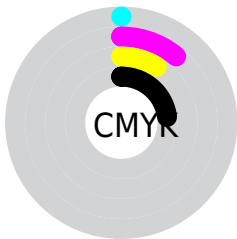
Distribution



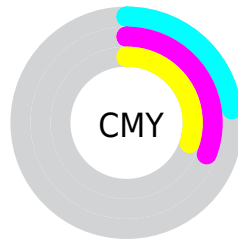
- Red (77%)
- Green (69%)
- Blue (70%)



- Red (77%)
- Yellow (69%)
- Blue (70%)



- Cyan (0%)
- Magenta (11%)
- Yellow (9%)
- Black (23%)



- Cyan (23%)
- Magenta (31%)
- Yellow (30%)

Brightness & Saturation Gradients

These gradients show how the Hex color C4AFB3 changes by changing the brightness by 10 percent. The first figure shows a shift by +10% for each color and the second figure -10%.

Similar to the brightness gradients but the following saturation gradients show a change of the Hex color C4AFB3 by changing the saturation by 10% instead.

 C4AFB3

 C4AFB3

FFFFFF

 A99498

 FDE7EB

 8E7B7E

 756265

 5C4A4D

 443337

 2E1E21

 1A060B

 000000

 C4AFB3

 C4AFB3

 C49BA3

 C4C3C3

 C48893

 C4D6D3

 C47483

 C4EAE3

 C46174

 C4FDF2

 C44D64

 C4FFFF

 C43954

 C42644

 C41234

 C40025

Harmonies

Analogous

The Analogous color harmony consists of three colors that are next to each other on the color wheel.



BFB0BB



C4AFB3



C4B0AC

Triad

The Triadic color harmony groups three colors that are evenly spaced from another and form a triangle on the color wheel.



C4AFB3



B0B6A8



A6B7C1

Complementary

The Complementary color scheme is a pair of colors which are on the opposite of each other on the color wheel.



C4AFB3



AFC4C0

Split Complementary

Split-complementary colors differ from the complementary color scheme. The scheme consists of three colors, the original color and two neighbors of the complement color.



A2B8BC



C4AFB3



A8B8AD

Square

The Square scheme is like the rectangle color scheme, but the four colors are evenly spaced on the color wheel.



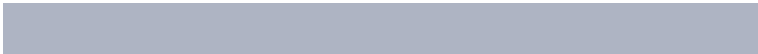
C4AFB3



B9B4A5



A3B9B5



AEB4C3

Rectangle

The Rectangle color scheme consists of four colors that form a rectangle on the color wheel.



C4AFB3



C2B1A8



A3B9B5



A4B7C0

Sweetspot

The Sweet Spot groups the original color and five complimentary colors.



C4AFB3



FFF7F9



C0AFC4



807A7B



000000



808080

Same Dimension

The Same Dimension uses a secret algorithm to generate beautiful new colors.



C4AFB3



FFDEE4



C4B5AF



615759



A1001F



210006

Inverse Universe

The Inverse Universe completely reimagines the original color for something new.



C4AFB3



FFDEE4



AFBEC4



615759



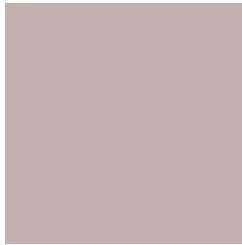
A1001F



210006

Previews

White Background



This preview shows how the Hex color C4AFB3 looks on a white background.

Color Contrast Check

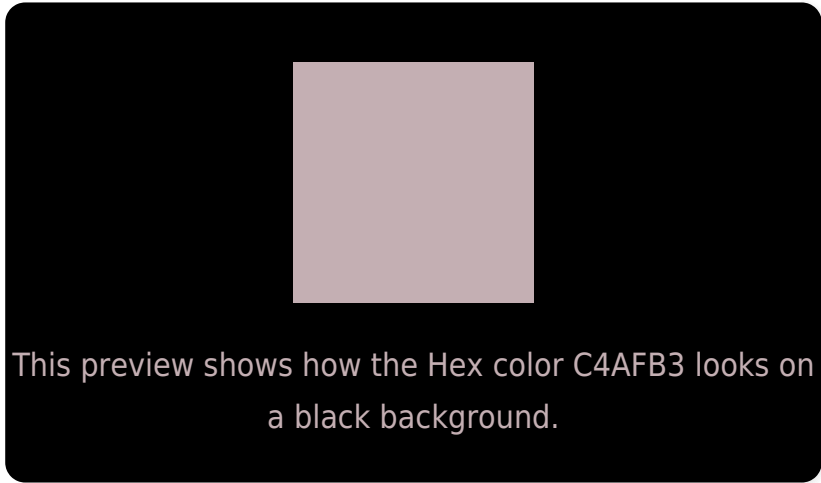
Large Text (above 18pt) WCAG AA × Fail

Any Text WCAG AA × Fail

Large Text (above 18pt) WCAG AAA × Fail

Any Text WCAG AAA × Fail

Black Background



Color Contrast Check

Large Text (above 18pt) WCAG AA ✓ Pass

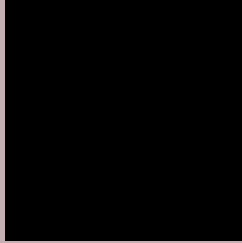
Any Text WCAG AA ✓ Pass

Large Text (above 18pt) WCAG AAA ✓ Pass

Any Text WCAG AAA ✓ Pass

If you want to check with other color combinations, try the [Color Contrast Checker](#).

Hex C4AFB3 Background



This preview shows how black text looks on a background with the Hex color C4AFB3.



This preview shows how white text looks on a background with the Hex color C4AFB3.

Color Blindness Simulation

Color vision deficiency is a very complex topic, and I could not describe the different causes any better than Wikipedia does, so if you want to learn more, you should check out their [article about color blindness](#).

Dichromacy





Tritanopia
C5AEBB

Trichromacy



Original Color
C4AFB3

Protanomaly
BCB2B4

Deuteranomaly
C5AEB3

Tritanomaly
C5AEB8

Monochromacy



Original Color
C4AFB3

Achromatopsia
B6B6B6

Achromatomaly
BBB3B5

CSS Examples

Text

The CSS property to change the color of the text to Hex C4AFB3 is called "color". The color property can be set on classes, ids or directly on the HTML element.

This example shows how text in the color #C4AFB3 looks like.

```
.text, #text, p{  
    color:#C4AFB3  
}
```

If you want to add a text shadow in that color use the text-shadow property, you can generate a text shadow directly with our [CSS Text Shadow Generator](#).

Here you see how black text with a 4 pixel #C4AFB3 colored shadow looks like.

```
.shadow{ text-shadow: 4px 4px 2px #C4AFB3
}
```

Border

The CSS property to change the border of an element to Hex C4AFB3 is called "border". The border property can be set on classes, ids or directly on the HTML element.

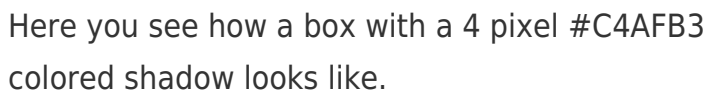
This example shows the color as border, it can be applied via the CSS property "border" or "border-color".

```
.border, #border, table{ border:4px solid
#C4AFB3 }
```

If only the border color should be changed use the property `border-color`.

```
.border{ border-color:#C4AFB3 }
```

If you want to add a box shadow in that color use:



Here you see how a box with a 4 pixel #C4AFB3 colored shadow looks like.

```
.boxshadow{ -moz-box-shadow:4px 4px 4px  
4px #C4AFB3; -webkit-box-shadow:4px 4px  
4px 4px #C4AFB3; box-shadow:4px 4px 4px  
4px #C4AFB3 }
```

Background

The CSS property to change the background color of an element to Hex C4AFB3 is called "background". The background property can be set on classes, ids or directly on the HTML element.

```
.background, #background, body{  
background:#C4AFB3 }
```

If only the background color should be changed can be used:

```
.background{ background-color:#C4AFB3 }
```

This example shows the color as background, it is applied via the CSS property "background".

To optimize and compress your CSS code, you can use our [online CSS compressor and optimizer](#) based on csstidy. If you want to create a linear or radial gradient as background or border, check our [CSS Gradient Generator](#).

Hey! You found this booklet interesting? Support Converting Colors with the new Membership Option!

The pro membership hides all ads, plus gives you double the colors in the color bucket, and more awesome pro features!

[Learn more, Memberships starting at \\$2.50/m!](#)

**Follow me
on Twitter!**

@ConvertingColor