

# Converting Colors

Hex(C4B0AE)

Have a look what the booklet for  
Hex(C4B0AE) contains.

<b>Hex(C4B0AE)</b> .....	3
<i><b>Conversions</b></i> .....	4
<i><b>Details</b></i> .....	6
<i><b>Harmonies</b></i> .....	11
<i><b>Previews</b></i> .....	23
<i><b>Color Blindness Simulation</b></i> .....	26
<i><b>CSS Examples</b></i> .....	29

# **Color**

**Hex(C4B0AE)**

# Conversions

## Conversions Part 1

Format	Color
Hex	C4B0AE
RGB	196, 176, 174
RGB Percent	77%, 69%, 68%
CMY	0.2314, 0.3098, 0.3176
CMYK	0.00, 0.10, 0.11, 0.23
HSL	5°, 16%, 73%
HSV	5°, 11%, 77%
XYZ	45.9303, 45.8424, 46.4721
YIQ	181.7520, 12.5620, 3.6180

# Conversions

## Conversions Part 2

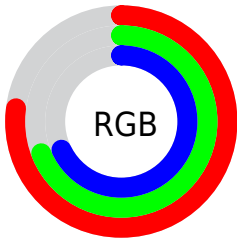
<b>Format</b>	<b>Color</b>
R <sub>Y</sub> B	196, 176, 174
Decimal	12890286
CIE Lab	73.44, 6.83, 3.63
CIE LCh	73, 7.738, 27.976
Yxy	45.8424, 0.3322, 0.3316
Android (android.graphics.Color)	4291080366 (0xFFC4B0AE)
YUV	181.7520, -3.8217, 12.4955
Hunter-Lab	67.7070, 2.6013, 6.7000

# Details

The Hex color **C4B0AE** is a light color, and the websafe version is hex **CCCCCC**. A complement of this color would be **AEC2C4**, and the grayscale version is **B6B6B6**.

A 20% lighter version of the original color is **FDE8E5**, and **8E7C7A** is the 20% darker color. If you saturate the color by 10%, you get **C49E9A**, and if you desaturate by 10%, it is **C4C2C2**.

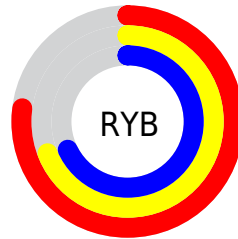
# Distribution



Red (77%)

Green (69%)

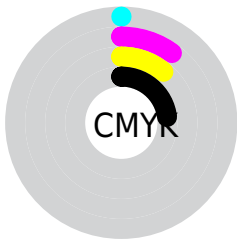
Blue (68%)



Red (77%)

Yellow (69%)

Blue (68%)

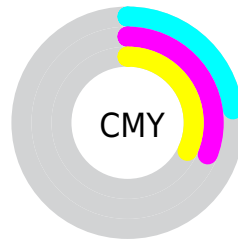


Cyan (0%)

Magenta (10%)

Yellow (11%)

Black (23%)



Cyan (23%)

Magenta (31%)

Yellow (32%)

# Brightness & Saturation Gradients

These gradients show how the Hex color C4B0AE changes by changing the brightness by 10 percent. The first figure shows a shift by +10% for each color and the second figure -10%.

Similar to the brightness gradients but the following saturation gradients show a change of the Hex color C4B0AE by changing the saturation by 10% instead.



 C4B0AE

 C4B0AE

FFFFFF

 A99593

 FDE8E5

 8E7C7A

 746361

 5C4B49

 443433

 2D1F1E

 1A0704

 000000

 C4B0AE

 C4B0AE

 C49E9A

 C4C2C2

 C48C87

 C4D4D5

 C47B73

 C4E5E9

 C46960

 C4F7FC

 C4574C

 C4FFFF

 C44538

 C43325

 C42111

 C41200

# Harmonies

## Analogous

The Analogous color harmony consists of three colors that are next to each other on the color wheel.



C3B0B5



C4B0AE



C1B1A9

# Triad

The Triadic color harmony groups three colors that are evenly spaced from another and form a triangle on the color wheel.



C4B0AE



ABB8AD



ADB5C2

# Complementary

The Complementary color scheme is a pair of colors which are on the opposite of each other on the color wheel.



C4B0AE



AEC2C4

# Split Complementary

Split-complementary colors differ from the complementary color scheme. The scheme consists of three colors, the original color and two neighbors of the complement color.



A6B7C0



C4B0AE



A5B9B4

# Square

The Square scheme is like the rectangle color scheme, but the four colors are evenly spaced on the color wheel.



C4B0AE



B3B6A8



A3B8BB



B5B3C1

# Rectangle

The Rectangle color scheme consists of four colors that form a rectangle on the color wheel.



C4B0AE



BDB3A7



A3B8BB



AAB6C2



# Sweetspot

The Sweet Spot groups the original color and five complimentary colors.



C4B0AE



FFF8F7



C4AEC2



807B7A



000000



808080

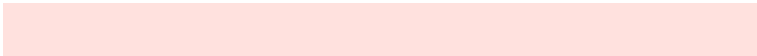


# Same Dimension

The Same Dimension uses a secret algorithm to generate beautiful new colors.



C4B0AE



FFE1DE



C4BBAE



615857



A10F00



210300

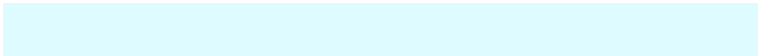


# Inverse Universe

The Inverse Universe completely reimagines the original color for something new.



AEC2C4



DEFCFF



AEB7C4



576061



0092A1

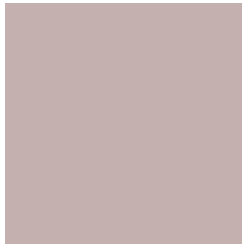


001E21



# Previews

## White Background



This preview shows how the Hex color C4B0AE looks on a white background.

## Color Contrast Check

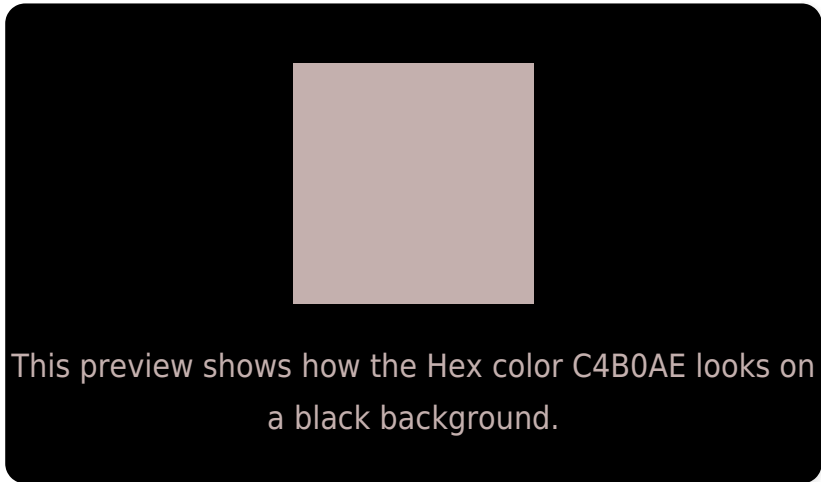
Large Text (above 18pt) WCAG AA × Fail

Any Text WCAG AA × Fail

Large Text (above 18pt) WCAG AAA × Fail

Any Text WCAG AAA × Fail

# Black Background



## Color Contrast Check

Large Text (above 18pt) WCAG AA ✓ Pass

Any Text WCAG AA ✓ Pass

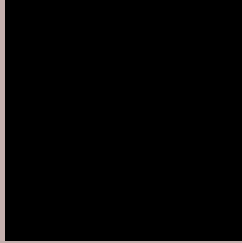
Large Text (above 18pt) WCAG AAA ✓ Pass

Any Text WCAG AAA ✓ Pass

If you want to check with other color combinations, try the [Color Contrast Checker](#).



## Hex C4B0AE Background



This preview shows how black text looks on a background with the Hex color C4B0AE.



This preview shows how white text looks on a background with the Hex color C4B0AE.

# Color Blindness Simulation

Color vision deficiency is a very complex topic, and I could not describe the different causes any better than Wikipedia does, so if you want to learn more, you should check out their [article about color blindness](#).

## Dichromacy





# Trichromacy



**Original Color**  
C4B0AE

**Protanomaly**  
BDB3AF

**Deuteranomaly**  
C7AFAE

**Tritanomaly**  
C5AFB7

# Monochromacy



**Original Color**  
C4B0AE

**Achromatopsia**  
B6B6B6

**Achromatomaly**  
BBB4B3

# CSS Examples

## Text

The CSS property to change the color of the text to Hex C4B0AE is called "color". The color property can be set on classes, ids or directly on the HTML element.

This example shows how text in the color #C4B0AE looks like.

```
.text, #text, p{  
    color:#C4B0AE  
}
```

If you want to add a text shadow in that color use the text-shadow property, you can generate a text shadow directly with our [CSS Text Shadow Generator](#).

Here you see how black text with a 4 pixel #C4B0AE colored shadow looks like.

```
.shadow{ text-shadow: 4px 4px 2px #C4B0AE  
}
```

## Border

The CSS property to change the border of an element to Hex C4B0AE is called "border". The border property can be set on classes, ids or directly on the HTML element.

This example shows the color as border, it can be applied via the CSS property "border" or "border-color".

```
.border, #border, table{ border:4px solid  
#C4B0AE }
```

If only the border color should be changed use the property `border-color`.

```
.border{ border-color:#C4B0AE }
```

If you want to add a box shadow in that color use:

Here you see how a box with a 4 pixel #C4B0AE colored shadow looks like.

```
.boxshadow{ -moz-box-shadow:4px 4px 4px  
4px #C4B0AE; -webkit-box-shadow:4px 4px  
4px 4px #C4B0AE; box-shadow:4px 4px 4px  
4px #C4B0AE }
```

# Background

The CSS property to change the background color of an element to Hex C4B0AE is called "background". The background property can be set on classes, ids or directly on the HTML element.

```
.background, #background, body{  
background:#C4B0AE }
```

If only the background color should be changed can be used:

```
.background{ background-color:#C4B0AE }
```

This example shows the color as background, it is applied via the CSS property "background".

To optimize and compress your CSS code, you can use our [online CSS compressor and optimizer](#) based on csstidy. If you want to create a linear or radial gradient as background or border, check our [CSS Gradient Generator](#).



Hey! You found this booklet interesting? Support Converting Colors with the new Membership Option!

The pro membership hides all ads, plus gives you double the colors in the color bucket, and more awesome pro features!

**[Learn more, Memberships starting at \\$2.50/m!](#)**

**Follow me  
on Twitter!**

@ConvertingColor