

Converting Colors

Hex(C4B4A0)

Have a look what the booklet for
Hex(C4B4A0) contains.

Hex(C4B4A0)	3
<i>Conversions</i>	4
<i>Details</i>	6
<i>Harmonies</i>	11
<i>Previews</i>	23
<i>Color Blindness Simulation</i>	26
<i>CSS Examples</i>	29

Color

Hex(C4B4A0)

Conversions

Conversions Part 1

Format	Color
Hex	C4B4A0
RGB	196, 180, 160
RGB Percent	77%, 71%, 63%
CMY	0.2314, 0.2941, 0.3725
CMYK	0.00, 0.08, 0.18, 0.23
HSL	33°, 23%, 70%
HSV	33°, 18%, 77%
XYZ	45.4314, 46.9163, 39.9190
YIQ	182.5040, 15.9560, -2.8280

Conversions

Conversions Part 2

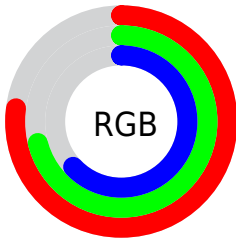
Format	Color
RYB	189, 196, 160
Decimal	12891296
CIELab	74.14, 2.42, 12.26
CIELCh	74, 12.501, 78.834
Yxy	46.9163, 0.3435, 0.3547
Android (android.graphics.Color)	4291081376 (0xFFC4B4A0)
YUV	182.5040, -11.0945, 11.8360
Hunter-Lab	68.4955, -1.4725, 13.3928

Details

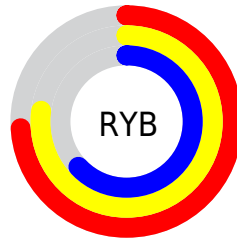
The Hex color **C4B4A0** is a light color, and the websafe version is hex **CCCCCC**. A complement of this color would be **A0B0C4**, and the grayscale version is **B7B7B7**.

A 20% lighter version of the original color is **FDECD7**, and **8E7F6D** is the 20% darker color. If you saturate the color by 10%, you get **C4AB8C**, and if you desaturate by 10%, it is **C4BDB4**.

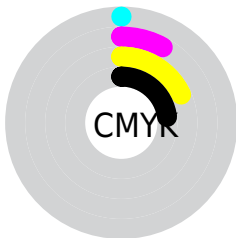
Distribution



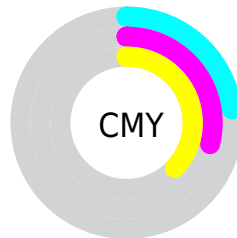
- Red (77%)
- Green (71%)
- Blue (63%)



- Red (74%)
- Yellow (77%)
- Blue (63%)



- Cyan (0%)
- Magenta (8%)
- Yellow (18%)
- Black (23%)



- Cyan (23%)
- Magenta (29%)
- Yellow (37%)

Brightness & Saturation Gradients

These gradients show how the Hex color C4B4A0 changes by changing the brightness by 10 percent. The first figure shows a shift by +10% for each color and the second figure -10%.

Similar to the brightness gradients but the following saturation gradients show a change of the Hex color C4B4A0 by changing the saturation by 10% instead.



C4B4A0



C4B4A0

FFFFFF



A99986



FDECD7



8E7F6D



FFFFF3



746654



5B4E3D



433827



2D2213



180C00



000000



C4B4A0



C4B4A0

 C4AB8C

 C4BDB4

 C4A379

 C4C5C7

 C49A65

 C4CEDB

 C49152

 C4D7EE

 C4883E

 C4E0FF

 C4802A

 C4E8FF

 C47717

 C4F1FF

 C46E03

 C4FAFF

 C46D00

 C4FFFF

Harmonies

Analogous

The Analogous color harmony consists of three colors that are next to each other on the color wheel.



CCB1A5



C4B4A0



B8B8A1

Triad

The Triadic color harmony groups three colors that are evenly spaced from another and form a triangle on the color wheel.



C4B4A0



99BDBD



C1B1C5

Complementary

The Complementary color scheme is a pair of colors which are on the opposite of each other on the color wheel.



C4B4A0



A0B0C4

Split Complementary

Split-complementary colors differ from the complementary color scheme. The scheme consists of three colors, the original color and two neighbors of the complement color.



B3B5CC



C4B4A0



9CBCC7

Square

The Square scheme is like the rectangle color scheme, but the four colors are evenly spaced on the color wheel.



C4B4A0



9FBDB1



A5B9CC



CBAFBB

Rectangle

The Rectangle color scheme consists of four colors that form a rectangle on the color wheel.



C4B4A0



AFBAA4



A5B9CC



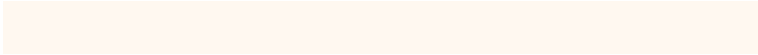
BDB2C8

Sweetspot

The Sweet Spot groups the original color and five complimentary colors.



C4B4A0



FFF8F0



C4A0B0



807C77



000000



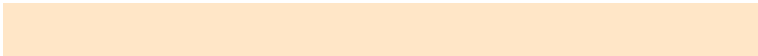
808080

Same Dimension

The Same Dimension uses a secret algorithm to generate beautiful new colors.



C4B4A0



FFE6C7



C2C4A0



615D57



A15900



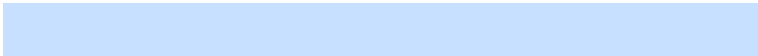
211200

Inverse Universe

The Inverse Universe completely reimagines the original color for something new.



A0B0C4



C7E0FF



A2A0C4



575C61



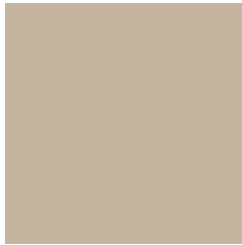
0047A1



000F21

Previews

White Background



This preview shows how the Hex color C4B4A0 looks on a white background.

Color Contrast Check

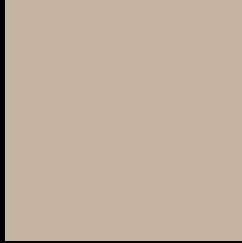
Large Text (above 18pt) WCAG AA × Fail

Any Text WCAG AA × Fail

Large Text (above 18pt) WCAG AAA × Fail

Any Text WCAG AAA × Fail

Black Background



This preview shows how the Hex color C4B4A0 looks on a black background.

Color Contrast Check

Large Text (above 18pt) WCAG AA ✓ Pass

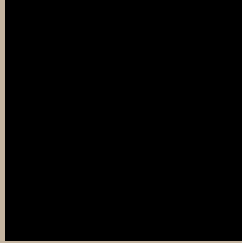
Any Text WCAG AA ✓ Pass

Large Text (above 18pt) WCAG AAA ✓ Pass

Any Text WCAG AAA ✓ Pass

If you want to check with other color combinations, try the [Color Contrast Checker](#).

Hex C4B4A0 Background



This preview shows how black text looks on a background with the Hex color C4B4A0.

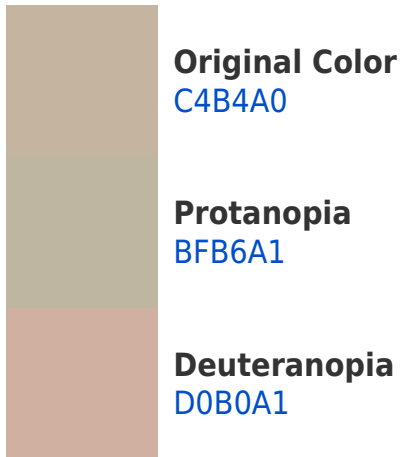



This preview shows how white text looks on a background with the Hex color C4B4A0.

Color Blindness Simulation

Color vision deficiency is a very complex topic, and I could not describe the different causes any better than Wikipedia does, so if you want to learn more, you should check out their [article about color blindness](#).

Dichromacy





Tritanopia
C8B0BD

Trichromacy



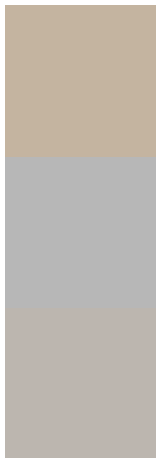
Original Color
C4B4A0

Protanomaly
C1B5A1

Deuteranomaly
CCB1A1

Tritanomaly
C7B1B2

Monochromacy



Original Color
C4B4A0

Achromatopsia
B7B7B7

Achromatomaly
BCB6AF

CSS Examples

Text

The CSS property to change the color of the text to Hex C4B4A0 is called "color". The color property can be set on classes, ids or directly on the HTML element.

This example shows how text in the color #C4B4A0 looks like.

```
.text, #text, p{  
    color:#C4B4A0  
}
```

If you want to add a text shadow in that color use the text-shadow property, you can generate a text shadow directly with our [CSS Text Shadow Generator](#).

Here you see how black text with a 4 pixel #C4B4A0 colored shadow looks like.

```
.shadow{ text-shadow: 4px 4px 2px #C4B4A0
}
```

Border

The CSS property to change the border of an element to Hex C4B4A0 is called "border". The border property can be set on classes, ids or directly on the HTML element.

This example shows the color as border, it can be applied via the CSS property "border" or "border-color".

```
.border, #border, table{ border:4px solid
#C4B4A0 }
```

If only the border color should be changed use the property `border-color`.

```
.border{ border-color:#C4B4A0 }
```

If you want to add a box shadow in that color use:

Here you see how a box with a 4 pixel #C4B4A0 colored shadow looks like.

```
.boxshadow{ -moz-box-shadow:4px 4px 4px  
4px #C4B4A0; -webkit-box-shadow:4px 4px  
4px 4px #C4B4A0; box-shadow:4px 4px 4px  
4px #C4B4A0 }
```

Background

The CSS property to change the background color of an element to Hex C4B4A0 is called "background". The background property can be set on classes, ids or directly on the HTML element.

```
.background, #background, body{  
background:#C4B4A0 }
```

If only the background color should be changed can be used:

```
.background{ background-color:#C4B4A0 }
```

This example shows the color as background, it is applied via the CSS property "background".

To optimize and compress your CSS code, you can use our [online CSS compressor and optimizer](#) based on csstidy. If you want to create a linear or radial gradient as background or border, check our [CSS Gradient Generator](#).

Hey! You found this booklet interesting? Support Converting Colors with the new Membership Option!

The pro membership hides all ads, plus gives you double the colors in the color bucket, and more awesome pro features!

[Learn more, Memberships starting at \\$2.50/m!](#)

**Follow me
on Twitter!**

@ConvertingColor