

Converting Colors

Hex(C55488)

Have a look what the booklet for
Hex(C55488) contains.

Hex(C55488)	3
<i>Conversions</i>	4
<i>Details</i>	6
<i>Harmonies</i>	11
<i>Previews</i>	23
<i>Color Blindness Simulation</i>	26
<i>CSS Examples</i>	29

Color

Hex(C55488)

Conversions

Conversions Part 1

Format	Color
Hex	C55488
RGB	197, 84, 136
RGB Percent	77%, 33%, 53%
CMY	0.2275, 0.6706, 0.4667
CMYK	0.00, 0.57, 0.31, 0.23
HSL	332°, 49%, 55%
HSV	332°, 57%, 77%
XYZ	30.6402, 19.9885, 25.5358
YIQ	123.7150, 50.6560, 40.1280

Conversions

Conversions Part 2

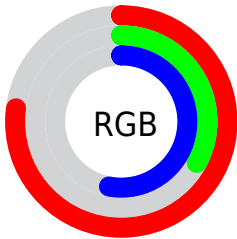
Format	Color
R_{YB}	197, 84, 136
Decimal	12932232
CIE _{Lab}	51.82, 50.49, -6.40
CIE _{LCh}	52, 50.895, 352.778
Yxy	19.9885, 0.4023, 0.2624
Android (android.graphics.Color)	4291122312 (0xFFC55488)
YUV	123.7150, 6.0565, 64.2709
Hunter-Lab	44.7085, 44.0919, -2.5682

Details

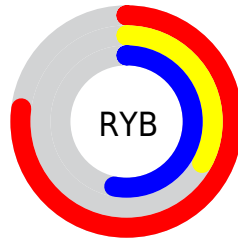
The Hex color **C55488** is a dark color, and the websafe version is hex **CC6699**. The color can be described as middle muted rose. A complement of this color would be **54C591**, and the grayscale version is **7C7C7C**.

A 20% lighter version of the original color is **FF8ABD**, and **8C1B56** is the 20% darker color. If you saturate the color by 10%, you get **C5407D**, and if you desaturate by 10%, it is **C56893**.

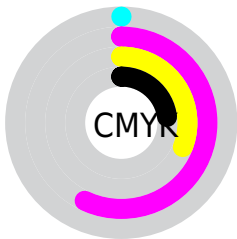
Distribution



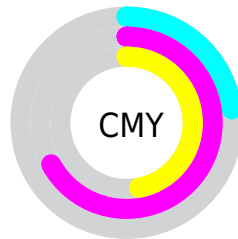
- Red (77%)
- Green (33%)
- Blue (53%)



- Red (77%)
- Yellow (33%)
- Blue (53%)



- Cyan (0%)
- Magenta (57%)
- Yellow (31%)
- Black (23%)



- Cyan (23%)
- Magenta (67%)
- Yellow (47%)

Brightness & Saturation Gradients

These gradients show how the Hex color C55488 changes by changing the brightness by 10 percent. The first figure shows a shift by +10% for each color and the second figure -10%.

Similar to the brightness gradients but the following saturation gradients show a change of the Hex color C55488 by changing the saturation by 10% instead.

 C55488

 C55488

FFFFFF

 A8396F

 FF8ABD

 8C1B56

 FFA6D9

 70003F

 FFC2F5

 550029

 FFDFFF

 3B0015

 FFCCFF

 1D0001

 000000

 C55488

 C55488

 C5407D

 C56893

 C52D73

 C57B9D

 C51968

 C58FA8

 C5055D

 C5A3B3

 C5005B

 C5B7BD

 C5CAC8

 C5DED2

 C5F2DD

 C5FFE8

Harmonies

Analogous

The Analogous color harmony consists of three colors that are next to each other on the color wheel.



A662B1



C55488



CA565C

Triad

The Triadic color harmony groups three colors that are evenly spaced from another and form a triangle on the color wheel.



C55488



728323



008DC0

Complementary

The Complementary color scheme is a pair of colors which are on the opposite of each other on the color wheel.



C55488



54C591

Split Complementary

Split-complementary colors differ from the complementary color scheme. The scheme consists of three colors, the original color and two neighbors of the complement color.



00909C



C55488



3A8C44

Square

The Square scheme is like the rectangle color scheme, but the four colors are evenly spaced on the color wheel.



C55488



9B761E



00906F



0084D2

Rectangle

The Rectangle color scheme consists of four colors that form a rectangle on the color wheel.



C55488



C25F42



00906F



008EB6

Sweetspot

The Sweet Spot groups the original color and five complimentary colors.



C55488



FFD4E8



9054C5



806672



000000



808080

Same Dimension

The Same Dimension uses a secret algorithm to generate beautiful new colors.



C55488



FF4FA0



C55854



635A5E



A3004B



240010

Inverse Universe

The Inverse Universe completely reimagines the original color for something new.



C55488



FF4FA0



54C1C5



635A5E



A3004B



240010

Previews

White Background



This preview shows how the Hex color C55488 looks on a white background.

Color Contrast Check

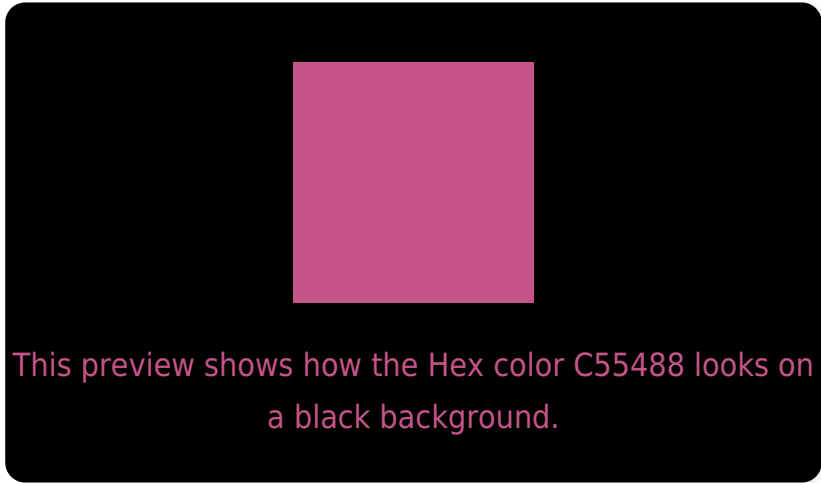
Large Text (above 18pt) WCAG AA ✓ Pass

Any Text WCAG AA × Fail

Large Text (above 18pt) WCAG AAA × Fail

Any Text WCAG AAA × Fail

Black Background



Color Contrast Check

Large Text (above 18pt) WCAG AA ✓ Pass

Any Text WCAG AA ✓ Pass

Large Text (above 18pt) WCAG AAA ✓ Pass

Any Text WCAG AAA × Fail

If you want to check with other color combinations, try the [Color Contrast Checker](#).

Hex C55488 Background



This preview shows how black text looks on a background with the Hex color C55488.



This preview shows how white text looks on a background with the Hex color C55488.

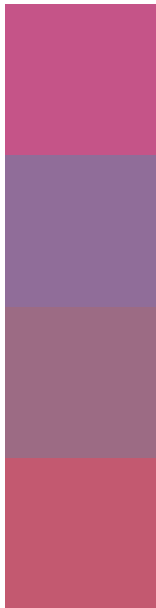
Color Blindness Simulation

Color vision deficiency is a very complex topic, and I could not describe the different causes any better than Wikipedia does, so if you want to learn more, you should check out their [article about color blindness](#).

Dichromacy



Trichromacy



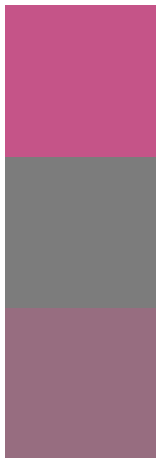
Original Color
C55488

Protanomaly
906D99

Deuteranomaly
9C6B84

Tritanomaly
C35970

Monochromacy



Original Color
C55488

Achromatopsia
7C7C7C

Achromatomaly
976D80

CSS Examples

Text

The CSS property to change the color of the text to Hex C55488 is called "color". The color property can be set on classes, ids or directly on the HTML element.

This example shows how text in the color #C55488 looks like.

```
.text, #text, p{  
  color:#C55488  
}
```

If you want to add a text shadow in that color use the text-shadow property, you can generate a text shadow directly with our [CSS Text Shadow Generator](#).

Here you see how black text with a 4 pixel #C55488 colored shadow looks like.

```
.shadow{ text-shadow: 4px 4px 2px #C55488
}
```

Border

The CSS property to change the border of an element to Hex C55488 is called "border". The border property can be set on classes, ids or directly on the HTML element.

This example shows the color as border, it can be applied via the CSS property "border" or "border-color".

```
.border, #border, table{ border:4px solid
#C55488 }
```

If only the border color should be changed use the property `border-color`.

```
.border{ border-color:#C55488 }
```

If you want to add a box shadow in that color use:

Here you see how a box with a 4 pixel #C55488 colored shadow looks like.

```
.boxshadow{ -moz-box-shadow:4px 4px 4px  
4px #C55488; -webkit-box-shadow:4px 4px  
4px 4px #C55488; box-shadow:4px 4px 4px  
4px #C55488 }
```

Background

The CSS property to change the background color of an element to Hex C55488 is called "background". The background property can be set on classes, ids or directly on the HTML element.

```
.background, #background, body{  
background:#C55488 }
```

If only the background color should be changed can be used:

```
.background{ background-color:#C55488 }
```

This example shows the color as background, it is applied via the CSS property "background".

To optimize and compress your CSS code, you can use our [online CSS compressor and optimizer](#) based on csstidy. If you want to create a linear or radial gradient as background or border, check our [CSS Gradient Generator](#).

Hey! You found this booklet interesting? Support Converting Colors with the new Membership Option!

The pro membership hides all ads, plus gives you double the colors in the color bucket, and more awesome pro features!

[Learn more, Memberships starting at \\$2.50/m!](#)

**Follow me
on Twitter!**

@ConvertingColor