

# Converting Colors

Hex(C58A87)

Have a look what the booklet for  
Hex(C58A87) contains.

<b>Hex(C58A87)</b> .....	3
<i><b>Conversions</b></i> .....	4
<i><b>Details</b></i> .....	6
<i><b>Harmonies</b></i> .....	11
<i><b>Previews</b></i> .....	23
<i><b>Color Blindness Simulation</b></i> .....	26
<i><b>CSS Examples</b></i> .....	29

# **Color**

**Hex(C58A87)**

# Conversions

## Conversions Part 1

Format	Color
Hex	C58A87
RGB	197, 138, 135
RGB Percent	77%, 54%, 53%
CMY	0.2275, 0.4588, 0.4706
CMYK	0.00, 0.30, 0.31, 0.23
HSL	3°, 35%, 65%
HSV	3°, 31%, 77%
XYZ	36.4876, 31.7965, 27.1359
YIQ	155.2990, 36.1270, 11.5750

# Conversions

## Conversions Part 2

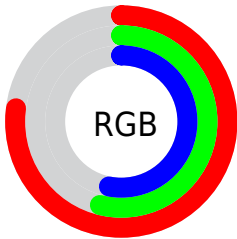
Format	Color
<a href="#">RYB</a>	<a href="#">197, 138, 135</a>
Decimal	<a href="#">12946055</a>
CIELab	<a href="#">63.17, 22.12, 10.65</a>
CIElCh	<a href="#">63, 24.549, 25.701</a>
Yxy	<a href="#">31.7965, 0.3824, 0.3332</a>
Android (android.graphics.Color)	<a href="#">4291136135</a> ( <a href="#">0xFFC58A87</a> )
YUV	<a href="#">155.2990, -10.0074, 36.5718</a>
Hunter-Lab	<a href="#">56.3884, 16.8234, 10.9397</a>

# Details

The Hex color **C58A87** is a light color, and the websafe version is hex **CC9999**. A complement of this color would be **87C2C5**, and the grayscale version is **9B9B9B**.

A 20% lighter version of the original color is **FFC0BC**, and **8E5755** is the 20% darker color. If you saturate the color by 10%, you get **C57773**, and if you desaturate by 10%, it is **C59D9B**.

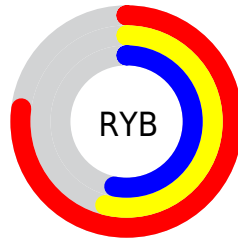
# Distribution



Red (77%)

Green (54%)

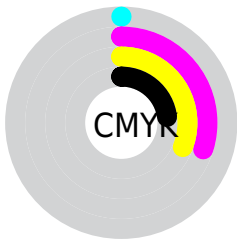
Blue (53%)



Red (77%)

Yellow (54%)

Blue (53%)

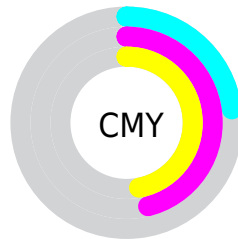


Cyan (0%)

Magenta (30%)

Yellow (31%)

Black (23%)



Cyan (23%)

Magenta (46%)

Yellow (47%)

# Brightness & Saturation Gradients

These gradients show how the Hex color C58A87 changes by changing the brightness by 10 percent. The first figure shows a shift by +10% for each color and the second figure -10%.

Similar to the brightness gradients but the following saturation gradients show a change of the Hex color C58A87 by changing the saturation by 10% instead.





C58A87



C58A87

FFFFFF



A9706E



FFC0BC



8E5755



FFDCD8



73403E



FFF8F4



592928



401314



2A0000



000000



C58A87



C58A87



C57773



C59D9B

 C56560

 C5AFAE

 C5524C

 C5C2C2

 C53F38

 C5D5D6

 C52C25

 C5E8EA

 C51A11

 C5FAFD

 C50A00

 C5FFFF

# Harmonies

## Analogous

The Analogous color harmony consists of three colors that are next to each other on the color wheel.



C2899D



C58A87



BD8F76

# Triad

The Triadic color harmony groups three colors that are evenly spaced from another and form a triangle on the color wheel.



C58A87



7CA280



799CC4

# Complementary

The Complementary color scheme is a pair of colors which are on the opposite of each other on the color wheel.



C58A87



87C2C5

# Split Complementary

Split-complementary colors differ from the complementary color scheme. The scheme consists of three colors, the original color and two neighbors of the complement color.



5FA2BC



C58A87



65A595

# Square

The Square scheme is like the rectangle color scheme, but the four colors are evenly spaced on the color wheel.



C58A87



959D71



57A5AB



9894C0

# Rectangle

The Rectangle color scheme consists of four colors that form a rectangle on the color wheel.



C58A87



B2946F



57A5AB



6F9EC3

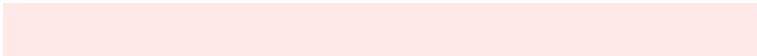


# Sweetspot

The Sweet Spot groups the original color and five complimentary colors.



C58A87



FFE9E8



C587C3



807271



000000



808080



# Same Dimension

The Same Dimension uses a secret algorithm to generate beautiful new colors.



C58A87



FFA39E



C5A887



635A5A



A30800



240200



# Inverse Universe

The Inverse Universe completely reimagines the original color for something new.



87C2C5



9EFAFF



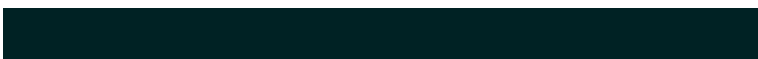
87A4C5



5A6363



009BA3

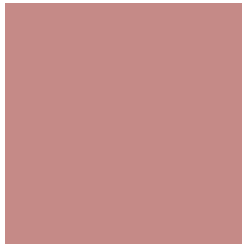


002224



# Previews

## White Background



This preview shows how the Hex color C58A87 looks on a white background.

## Color Contrast Check

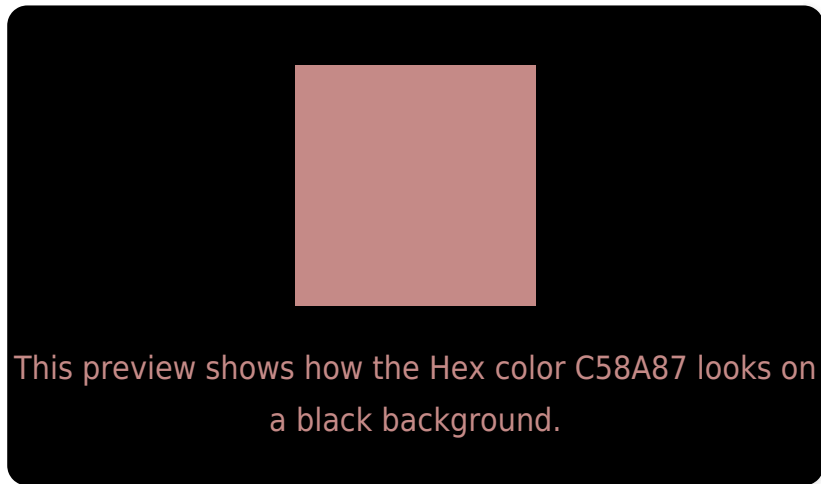
Large Text (above 18pt) WCAG AA × Fail

Any Text WCAG AA × Fail

Large Text (above 18pt) WCAG AAA × Fail

Any Text WCAG AAA × Fail

# Black Background



## Color Contrast Check

Large Text (above 18pt) WCAG AA ✓ Pass

Any Text WCAG AA ✓ Pass

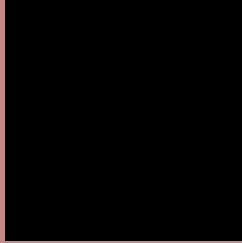
Large Text (above 18pt) WCAG AAA ✓ Pass

Any Text WCAG AAA ✓ Pass

If you want to check with other color combinations, try the [Color Contrast Checker](#).



## Hex C58A87 Background



This preview shows how black text looks on a background with the Hex color C58A87.



This preview shows how white text looks on a background with the Hex color C58A87.

# Color Blindness Simulation

Color vision deficiency is a very complex topic, and I could not describe the different causes any better than Wikipedia does, so if you want to learn more, you should check out their [article about color blindness](#).

## Dichromacy



**Original Color**  
C58A87

**Protanopia**  
9E998F

**Deuteranopia**  
AF9485



**Tritanopia**  
C68893

# Trichromacy



**Original Color**  
C58A87

**Protanomaly**  
AC948C

**Deuteranomaly**  
B79086

**Tritanomaly**  
C6898F

# Monochromacy



**Original Color**  
C58A87

**Achromatopsia**  
9B9B9B

**Achromatomaly**  
AA9594

# CSS Examples

## Text

The CSS property to change the color of the text to Hex C58A87 is called "color". The color property can be set on classes, ids or directly on the HTML element.

This example shows how text in the color #C58A87 looks like.

```
.text, #text, p{  
    color:#C58A87  
}
```

If you want to add a text shadow in that color use the text-shadow property, you can generate a text shadow directly with our [CSS Text Shadow Generator](#).

Here you see how black text with a 4 pixel #C58A87 colored shadow looks like.

```
.shadow{ text-shadow: 4px 4px 2px #C58A87
}
```

## Border

The CSS property to change the border of an element to Hex C58A87 is called "border". The border property can be set on classes, ids or directly on the HTML element.

This example shows the color as border, it can be applied via the CSS property "border" or "border-color".

```
.border, #border, table{ border:4px solid
#C58A87 }
```

If only the border color should be changed use the property `border-color`.

```
.border{ border-color:#C58A87 }
```

If you want to add a box shadow in that color use:

Here you see how a box with a 4 pixel #C58A87 colored shadow looks like.

```
.boxshadow{ -moz-box-shadow:4px 4px 4px  
4px #C58A87; -webkit-box-shadow:4px 4px  
4px 4px #C58A87; box-shadow:4px 4px 4px  
4px #C58A87 }
```

# Background

The CSS property to change the background color of an element to Hex C58A87 is called "background". The background property can be set on classes, ids or directly on the HTML element.

```
.background, #background, body{  
background:#C58A87 }
```

If only the background color should be changed can be used:

```
.background{ background-color:#C58A87 }
```

This example shows the color as background, it is applied via the CSS property "background".

To optimize and compress your CSS code, you can use our [online CSS compressor and optimizer](#) based on csstidy. If you want to create a linear or radial gradient as background or border, check our [CSS Gradient Generator](#).



Hey! You found this booklet interesting? Support Converting Colors with the new Membership Option!

The pro membership hides all ads, plus gives you double the colors in the color bucket, and more awesome pro features!

**[Learn more, Memberships starting at \\$2.50/m!](#)**

**Follow me  
on Twitter!**

@ConvertingColor