

Converting Colors

Hex(C58A8B)

Have a look what the booklet for
Hex(C58A8B) contains.

Hex(C58A8B)	3
<i>Conversions</i>	4
<i>Details</i>	6
<i>Harmonies</i>	11
<i>Previews</i>	23
<i>Color Blindness Simulation</i>	26
<i>CSS Examples</i>	29

Color

Hex(C58A8B)

Conversions

Conversions Part 1

Format	Color
Hex	C58A8B
RGB	197, 138, 139
RGB Percent	77%, 54%, 55%
CMY	0.2275, 0.4588, 0.4549
CMYK	0.00, 0.30, 0.29, 0.23
HSL	359°, 34%, 66%
HSV	359°, 30%, 77%
XYZ	36.7746, 31.9114, 28.6474
YIQ	155.7550, 34.8430, 12.8190

Conversions

Conversions Part 2

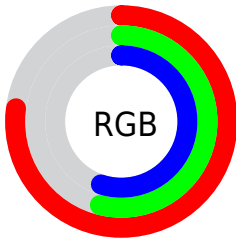
Format	Color
RYB	197, 138, 139
Decimal	12946059
CIELab	63.27, 22.66, 8.52
CIElCh	63, 24.208, 20.596
Yxy	31.9114, 0.3778, 0.3279
Android (android.graphics.Color)	4291136139 (0xFFC58A8B)
YUV	155.7550, -8.2602, 36.1719
Hunter-Lab	56.4901, 17.3444, 9.4759

Details

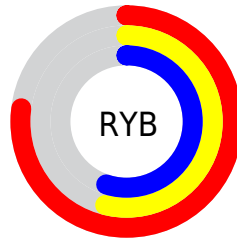
The Hex color **C58A8B** is a light color, and the websafe version is hex **CC9999**. A complement of this color would be **8AC5C4**, and the grayscale version is **9C9C9C**.

A 20% lighter version of the original color is **FFC0C0**, and **8E5759** is the 20% darker color. If you saturate the color by 10%, you get **C57678**, and if you desaturate by 10%, it is **C59E9E**.

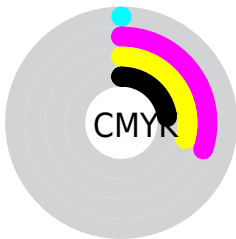
Distribution



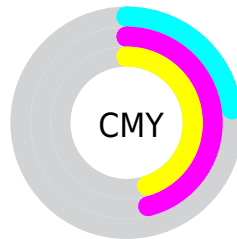
- Red (77%)
- Green (54%)
- Blue (55%)



- Red (77%)
- Yellow (54%)
- Blue (55%)



- Cyan (0%)
- Magenta (30%)
- Yellow (29%)
- Black (23%)



- Cyan (23%)
- Magenta (46%)
- Yellow (45%)

Brightness & Saturation Gradients

These gradients show how the Hex color C58A8B changes by changing the brightness by 10 percent. The first figure shows a shift by +10% for each color and the second figure -10%.

Similar to the brightness gradients but the following saturation gradients show a change of the Hex color C58A8B by changing the saturation by 10% instead.

 C58A8B

 C58A8B

FFFFFF

 A97072

 FFC0C0

 8E5759

 FFDCDC

 734042

 FFF8F9

 59292C

 401217

 2A0000

 000000

 C58A8B

 C58A8B

 C57678

 C59E9E

 C56364

 C5B1B2

 C54F51

 C5C5C5

 C53B3E

 C5D9D8

 C5282A

 C5EDEC

 C51417

 C5FFFF

 C50003

Harmonies

Analogous

The Analogous color harmony consists of three colors that are next to each other on the color wheel.



C08AA1



C58A8B



BF8E79

Triad

The Triadic color harmony groups three colors that are evenly spaced from another and form a triangle on the color wheel.



C58A8B



81A27D



759DC3

Complementary

The Complementary color scheme is a pair of colors which are on the opposite of each other on the color wheel.



C58A8B



8AC5C4

Split Complementary

Split-complementary colors differ from the complementary color scheme. The scheme consists of three colors, the original color and two neighbors of the complement color.



5EA3BA



C58A8B



69A591

Square

The Square scheme is like the rectangle color scheme, but the four colors are evenly spaced on the color wheel.



C58A8B



999C71



5AA5A7



9396C1

Rectangle

The Rectangle color scheme consists of four colors that form a rectangle on the color wheel.



C58A8B



B59371



5AA5A7



6C9FC1

Sweetspot

The Sweet Spot groups the original color and five complimentary colors.



C58A8B



FFE8E8



C38AC5



807172



000000



808080

Same Dimension

The Same Dimension uses a secret algorithm to generate beautiful new colors.



C58A8B



FFA3A5



C5A68A



635A5A



A30003



240001

Inverse Universe

The Inverse Universe completely reimagines the original color for something new.



C58A8B



FFA3A5



8AA9C5



635A5A



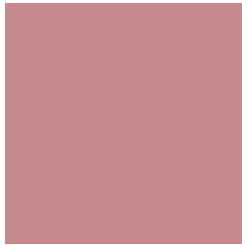
A30003



240001

Previews

White Background



This preview shows how the Hex color C58A8B looks on a white background.

Color Contrast Check

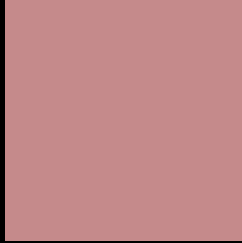
Large Text (above 18pt) WCAG AA × Fail

Any Text WCAG AA × Fail

Large Text (above 18pt) WCAG AAA × Fail

Any Text WCAG AAA × Fail

Black Background



This preview shows how the Hex color C58A8B looks on a black background.

Color Contrast Check

Large Text (above 18pt) WCAG AA ✓ Pass

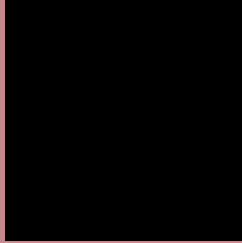
Any Text WCAG AA ✓ Pass

Large Text (above 18pt) WCAG AAA ✓ Pass

Any Text WCAG AAA ✓ Pass

If you want to check with other color combinations, try the [Color Contrast Checker](#).

Hex C58A8B Background



This preview shows how black text looks on a background with the Hex color C58A8B.

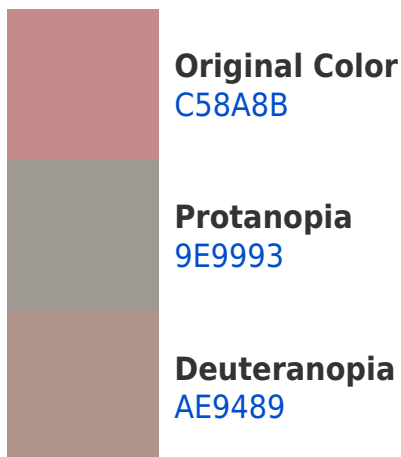


This preview shows how white text looks on a background with the Hex color C58A8B.

Color Blindness Simulation

Color vision deficiency is a very complex topic, and I could not describe the different causes any better than Wikipedia does, so if you want to learn more, you should check out their [article about color blindness](#).

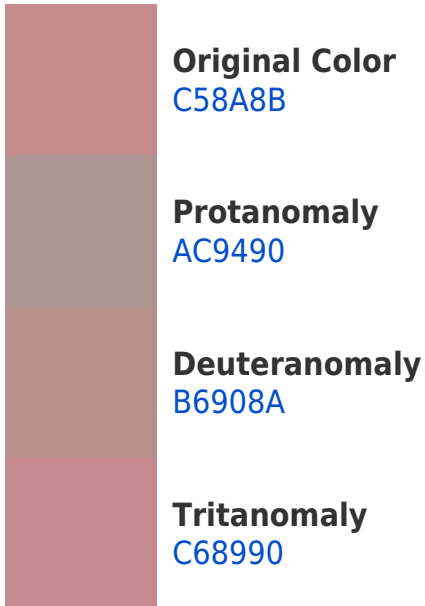
Dichromacy



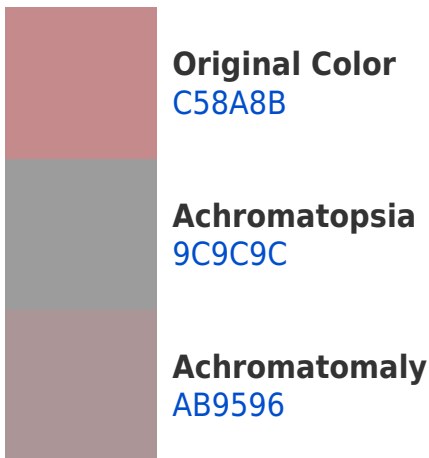


Tritanopia
C68993

Trichromacy



Monochromacy



CSS Examples

Text

The CSS property to change the color of the text to Hex C58A8B is called "color". The color property can be set on classes, ids or directly on the HTML element.

This example shows how text in the color #C58A8B looks like.

```
.text, #text, p{  
    color:#C58A8B  
}
```

If you want to add a text shadow in that color use the text-shadow property, you can generate a text shadow directly with our [CSS Text Shadow Generator](#).

Here you see how black text with a 4 pixel #C58A8B colored shadow looks like.

```
.shadow{ text-shadow: 4px 4px 2px #C58A8B
}
```

Border

The CSS property to change the border of an element to Hex C58A8B is called "border". The border property can be set on classes, ids or directly on the HTML element.

This example shows the color as border, it can be applied via the CSS property "border" or "border-color".

```
.border, #border, table{ border:4px solid
#C58A8B }
```

If only the border color should be changed use the property `border-color`.

```
.border{ border-color:#C58A8B }
```

If you want to add a box shadow in that color use:

Here you see how a box with a 4 pixel #C58A8B colored shadow looks like.

```
.boxshadow{ -moz-box-shadow:4px 4px 4px  
4px #C58A8B; -webkit-box-shadow:4px 4px  
4px 4px #C58A8B; box-shadow:4px 4px 4px  
4px #C58A8B }
```

Background

The CSS property to change the background color of an element to Hex C58A8B is called "background". The background property can be set on classes, ids or directly on the HTML element.

```
.background, #background, body{  
background:#C58A8B }
```

If only the background color should be changed can be used:

```
.background{ background-color:#C58A8B }
```

This example shows the color as background, it is applied via the CSS property "background".

To optimize and compress your CSS code, you can use our [online CSS compressor and optimizer](#) based on csstidy. If you want to create a linear or radial gradient as background or border, check our [CSS Gradient Generator](#).

Hey! You found this booklet interesting? Support Converting Colors with the new Membership Option!

The pro membership hides all ads, plus gives you double the colors in the color bucket, and more awesome pro features!

[Learn more, Memberships starting at \\$2.50/m!](#)

**Follow me
on Twitter!**

@ConvertingColor