

Converting Colors

Hex(C59262)

Have a look what the booklet for
Hex(C59262) contains.

Hex(C59262)	3
<i>Conversions</i>	4
<i>Details</i>	6
<i>Harmonies</i>	11
<i>Previews</i>	23
<i>Color Blindness Simulation</i>	26
<i>CSS Examples</i>	29

Color

Hex(C59262)

Conversions

Conversions Part 1

Format	Color
Hex	C59262
RGB	197, 146, 98
RGB Percent	77%, 57%, 38%
CMY	0.2275, 0.4275, 0.6157
CMYK	0.00, 0.26, 0.50, 0.23
HSL	29°, 46%, 58%
HSV	29°, 50%, 77%
XYZ	35.5094, 33.3099, 16.1132
YIQ	155.7770, 45.8040, -4.1160

Conversions

Conversions Part 2

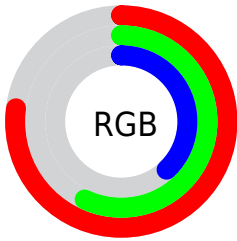
Format	Color
RYB	197, 191, 98
Decimal	12948066
CIELab	64.41, 13.51, 32.85
CIElCh	64, 35.522, 67.641
Yxy	33.3099, 0.4181, 0.3922
Android (android.graphics.Color)	4291138146 (0xFFC59262)
YUV	155.7770, -28.4841, 36.1526
Hunter-Lab	57.7148, 8.8227, 23.8474

Details

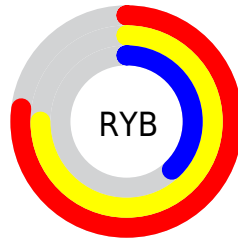
The Hex color **C59262** is a light color, and the websafe version is hex **CC9966**. A complement of this color would be **6295C5**, and the grayscale version is **9C9C9C**.

A 20% lighter version of the original color is **FFC895**, and **8D5F32** is the 20% darker color. If you saturate the color by 10%, you get **C5884E**, and if you desaturate by 10%, it is **C59C76**.

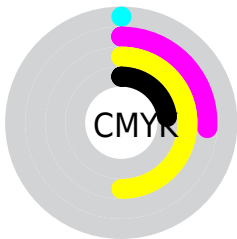
Distribution



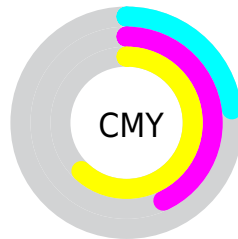
- Red (77%)
- Green (57%)
- Blue (38%)



- Red (77%)
- Yellow (75%)
- Blue (38%)



- Cyan (0%)
- Magenta (26%)
- Yellow (50%)
- Black (23%)



- Cyan (23%)
- Magenta (43%)
- Yellow (62%)

Brightness & Saturation Gradients

These gradients show how the Hex color C59262 changes by changing the brightness by 10 percent. The first figure shows a shift by +10% for each color and the second figure -10%.

Similar to the brightness gradients but the following saturation gradients show a change of the Hex color C59262 by changing the saturation by 10% instead.

 C59262

 C59262

FFFFFF

 A8784A

 FFC895

 8D5F32

 FFE4B0

 71481B

 FFFFCC

 573103

 FFFFEE

 3D1C00

 250500

 000000

 C59262

 C59262

 C5884E

 C59C76

 C57E3B

 C5A689

 C57427

 C5B09D

 C56913

 C5BBB1

 C56000

 C5C5C5

 C5CFD8

 C5D9EC

 C5E3FF

 C5EDFF

Harmonies

Analogous

The Analogous color harmony consists of three colors that are next to each other on the color wheel.



D78877



C59262



A99D5C

Triad

The Triadic color harmony groups three colors that are evenly spaced from another and form a triangle on the color wheel.



C59262



32ADA3



AA91CE

Complementary

The Complementary color scheme is a pair of colors which are on the opposite of each other on the color wheel.



C59262



6295C5

Split Complementary

Split-complementary colors differ from the complementary color scheme. The scheme consists of three colors, the original color and two neighbors of the complement color.



7C9DDB



C59262



0DACC2

Square

The Square scheme is like the rectangle color scheme, but the four colors are evenly spaced on the color wheel.



C59262



60AB83



43A6D6



CB87B5

Rectangle

The Rectangle color scheme consists of four colors that form a rectangle on the color wheel.



C59262



93A363



43A6D6



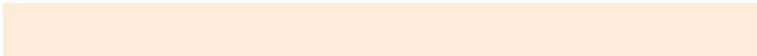
9C95D4

Sweetspot

The Sweet Spot groups the original color and five complimentary colors.



C59262



FFEBD9



C56295



807469



000000



808080

Same Dimension

The Same Dimension uses a secret algorithm to generate beautiful new colors.



C59262



FFB066



C5C362



635E5A



A34F00



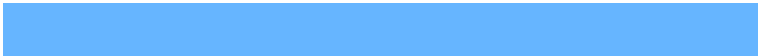
241100

Inverse Universe

The Inverse Universe completely reimagines the original color for something new.



6295C5



66B5FF



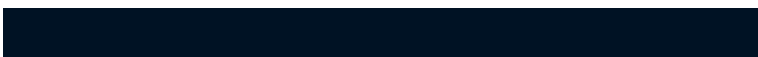
6264C5



5A5F63



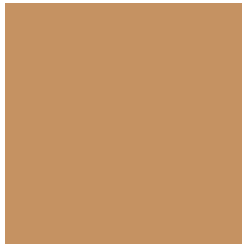
0054A3



001224

Previews

White Background



This preview shows how the Hex color C59262 looks on a white background.

Color Contrast Check

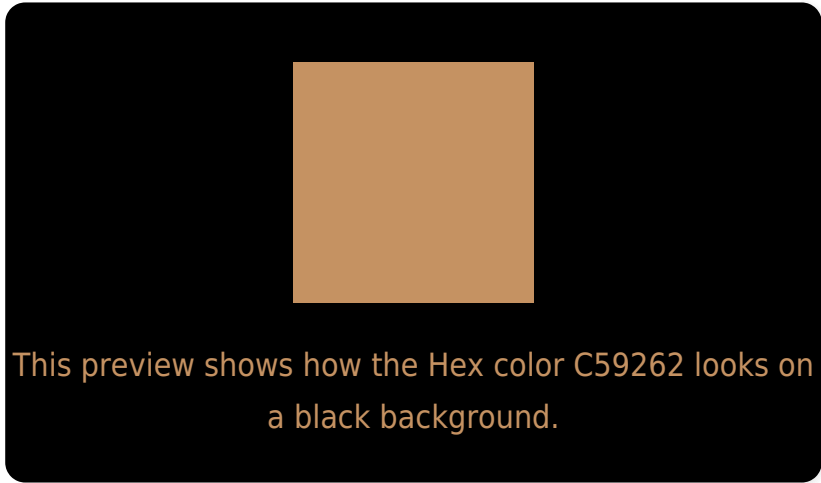
Large Text (above 18pt) WCAG AA × Fail

Any Text WCAG AA × Fail

Large Text (above 18pt) WCAG AAA × Fail

Any Text WCAG AAA × Fail

Black Background



Color Contrast Check

Large Text (above 18pt) WCAG AA ✓ Pass

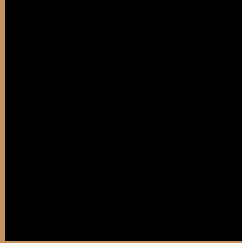
Any Text WCAG AA ✓ Pass

Large Text (above 18pt) WCAG AAA ✓ Pass

Any Text WCAG AAA ✓ Pass

If you want to check with other color combinations, try the [Color Contrast Checker](#).

Hex C59262 Background



This preview shows how black text looks on a background with the Hex color C59262.



This preview shows how white text looks on a background with the Hex color C59262.

Color Blindness Simulation

Color vision deficiency is a very complex topic, and I could not describe the different causes any better than Wikipedia does, so if you want to learn more, you should check out their [article about color blindness](#).

Dichromacy





Tritanopia
C98B96

Trichromacy



Original Color
C59262

Protanomaly
B49865

Deuteranomaly
C09461

Tritanomaly
C88E83

Monochromacy



Original Color
C59262

Achromatopsia
9C9C9C

Achromatomaly
AB9887

CSS Examples

Text

The CSS property to change the color of the text to Hex C59262 is called "color". The color property can be set on classes, ids or directly on the HTML element.

This example shows how text in the color #C59262 looks like.

```
.text, #text, p{  
    color:#C59262  
}
```

If you want to add a text shadow in that color use the text-shadow property, you can generate a text shadow directly with our [CSS Text Shadow Generator](#).

Here you see how black text with a 4 pixel #C59262 colored shadow looks like.

```
.shadow{ text-shadow: 4px 4px 2px #C59262
}
```

Border

The CSS property to change the border of an element to Hex C59262 is called "border". The border property can be set on classes, ids or directly on the HTML element.

This example shows the color as border, it can be applied via the CSS property "border" or "border-color".

```
.border, #border, table{ border:4px solid
#C59262 }
```

If only the border color should be changed use the property `border-color`.

```
.border{ border-color:#C59262 }
```

If you want to add a box shadow in that color use:

Here you see how a box with a 4 pixel #C59262 colored shadow looks like.

```
.boxshadow{ -moz-box-shadow:4px 4px 4px  
4px #C59262; -webkit-box-shadow:4px 4px  
4px 4px #C59262; box-shadow:4px 4px 4px  
4px #C59262 }
```

Background

The CSS property to change the background color of an element to Hex C59262 is called "background". The background property can be set on classes, ids or directly on the HTML element.

```
.background, #background, body{  
background:#C59262 }
```

If only the background color should be changed can be used:

```
.background{ background-color:#C59262 }
```

This example shows the color as background, it is applied via the CSS property "background".

To optimize and compress your CSS code, you can use our [online CSS compressor and optimizer](#) based on csstidy. If you want to create a linear or radial gradient as background or border, check our [CSS Gradient Generator](#).

Hey! You found this booklet interesting? Support Converting Colors with the new Membership Option!

The pro membership hides all ads, plus gives you double the colors in the color bucket, and more awesome pro features!

[Learn more, Memberships starting at \\$2.50/m!](#)

**Follow me
on Twitter!**

@ConvertingColor