

Converting Colors

Hex(C5935D)

Have a look what the booklet for
Hex(C5935D) contains.

Hex(C5935D)	3
<i>Conversions</i>	4
<i>Details</i>	6
<i>Harmonies</i>	11
<i>Previews</i>	23
<i>Color Blindness Simulation</i>	26
<i>CSS Examples</i>	29

Color

Hex(C5935D)

Conversions

Conversions Part 1

Format	Color
Hex	C5935D
RGB	197, 147, 93
RGB Percent	77%, 58%, 36%
CMY	0.2275, 0.4235, 0.6353
CMYK	0.00, 0.25, 0.53, 0.23
HSL	31°, 47%, 57%
HSV	31°, 53%, 77%
XYZ	35.4355, 33.5281, 14.9598
YIQ	155.7940, 47.1340, -6.1940

Conversions

Conversions Part 2

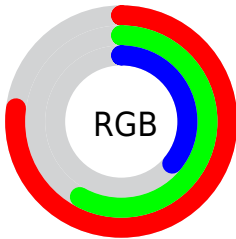
Format	Color
RYB	189, 197, 93
Decimal	12948317
CIELab	64.59, 12.51, 35.74
CIElCh	65, 37.866, 70.712
Yxy	33.5281, 0.4222, 0.3995
Android (android.graphics.Color)	4291138397 (0xFFC5935D)
YUV	155.7940, -30.9574, 36.1377
Hunter-Lab	57.9034, 7.9066, 25.2143

Details

The Hex color **C5935D** is a dark color, and the websafe version is hex **CC9966**. The color can be described as middle muted orange. A complement of this color would be **5D8FC5**, and the grayscale version is **9C9C9C**.

A 20% lighter version of the original color is **FFC990**, and **8C602D** is the 20% darker color. If you saturate the color by 10%, you get **C58A49**, and if you desaturate by 10%, it is **C59C71**.

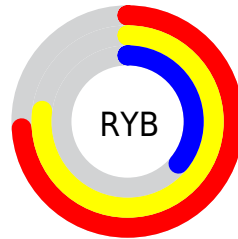
Distribution



Red (77%)

Green (58%)

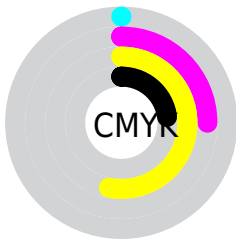
Blue (36%)



Red (74%)

Yellow (77%)

Blue (36%)

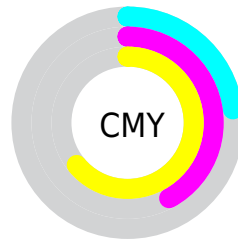


Cyan (0%)

Magenta (25%)

Yellow (53%)

Black (23%)



Cyan (23%)

Magenta (42%)

Yellow (64%)

Brightness & Saturation Gradients

These gradients show how the Hex color C5935D changes by changing the brightness by 10 percent. The first figure shows a shift by +10% for each color and the second figure -10%.

Similar to the brightness gradients but the following saturation gradients show a change of the Hex color C5935D by changing the saturation by 10% instead.

 C5935D

 C5935D

FFFFFF

 A87945

 FFC990

 8C602D

 FFE5AB

 714916

 FFFFC7

 563200

 FFFFEE3

 3D1D00

 240600

 000000

 C5935D

 C5935D

 C58A49

 C59C71

 C58036

 C5A684

 C57722

 C5AF98

 C56D0E

 C5B9AC

 C56600

 C5C2C0

 C5CCD3

 C5D5E7

 C5DFFB

 C5E8FF

Harmonies

Analogous

The Analogous color harmony consists of three colors that are next to each other on the color wheel.



D98872



C5935D



A79F59

Triad

The Triadic color harmony groups three colors that are evenly spaced from another and form a triangle on the color wheel.



C5935D



17AFA8



B08FD0

Complementary

The Complementary color scheme is a pair of colors which are on the opposite of each other on the color wheel.



C5935D



5D8FC5

Split Complementary

Split-complementary colors differ from the complementary color scheme. The scheme consists of three colors, the original color and two neighbors of the complement color.



7F9CDF



C5935D



00ADC8

Square

The Square scheme is like the rectangle color scheme, but the four colors are evenly spaced on the color wheel.



C5935D



56AD85



3EA6DC



D185B4

Rectangle

The Rectangle color scheme consists of four colors that form a rectangle on the color wheel.



C5935D



8EA561



3EA6DC



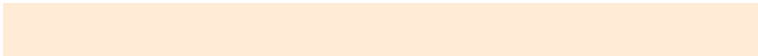
A194D7

Sweetspot

The Sweet Spot groups the original color and five complimentary colors.



C5935D



FFEBD6



C55D8F



807467



000000



808080

Same Dimension

The Same Dimension uses a secret algorithm to generate beautiful new colors.



C5935D



FFB25E



C3C55D



635F5A



A35500



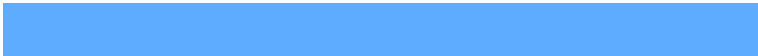
241300

Inverse Universe

The Inverse Universe completely reimagines the original color for something new.



5D8FC5



5EACFF



5F5DC5



5A5E63



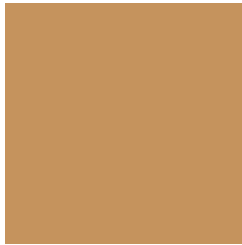
004EA3



001124

Previews

White Background



This preview shows how the Hex color C5935D looks on a white background.

Color Contrast Check

Large Text (above 18pt) WCAG AA × Fail

Any Text WCAG AA × Fail

Large Text (above 18pt) WCAG AAA × Fail

Any Text WCAG AAA × Fail

Black Background



Color Contrast Check

Large Text (above 18pt) WCAG AA ✓ Pass

Any Text WCAG AA ✓ Pass

Large Text (above 18pt) WCAG AAA ✓ Pass

Any Text WCAG AAA ✓ Pass

If you want to check with other color combinations, try the [Color Contrast Checker](#).

Hex C5935D Background



This preview shows how black text looks on a background with the Hex color C5935D.



This preview shows how white text looks on a background with the Hex color C5935D.

Color Blindness Simulation

Color vision deficiency is a very complex topic, and I could not describe the different causes any better than Wikipedia does, so if you want to learn more, you should check out their [article about color blindness](#).

Dichromacy



Original Color
C5935D

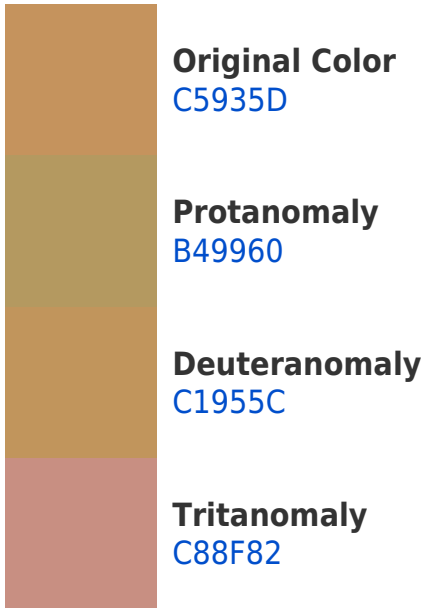
Protanopia
AB9D61

Deuteranopia
BF965C

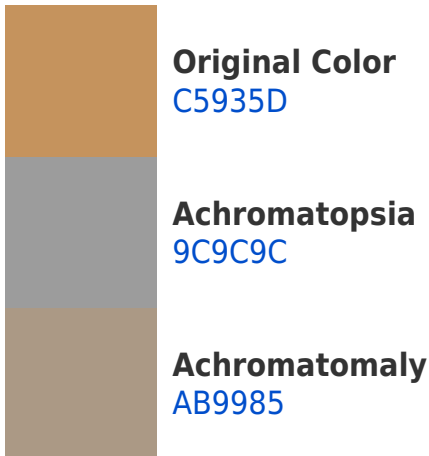


Tritanopia
CA8C97

Trichromacy



Monochromacy



CSS Examples

Text

The CSS property to change the color of the text to Hex C5935D is called "color". The color property can be set on classes, ids or directly on the HTML element.

This example shows how text in the color #C5935D looks like.

```
.text, #text, p{  
    color:#C5935D  
}
```

If you want to add a text shadow in that color use the text-shadow property, you can generate a text shadow directly with our [CSS Text Shadow Generator](#).

Here you see how black text with a 4 pixel #C5935D colored shadow looks like.

```
.shadow{ text-shadow: 4px 4px 2px #C5935D
}
```

Border

The CSS property to change the border of an element to Hex C5935D is called "border". The border property can be set on classes, ids or directly on the HTML element.

This example shows the color as border, it can be applied via the CSS property "border" or "border-color".

```
.border, #border, table{ border:4px solid
#C5935D }
```

If only the border color should be changed use the property border-color.

```
.border{ border-color:#C5935D }
```

If you want to add a box shadow in that color use:

Here you see how a box with a 4 pixel #C5935D colored shadow looks like.

```
.boxshadow{ -moz-box-shadow:4px 4px 4px  
4px #C5935D; -webkit-box-shadow:4px 4px  
4px 4px #C5935D; box-shadow:4px 4px 4px  
4px #C5935D }
```

Background

The CSS property to change the background color of an element to Hex C5935D is called "background". The background property can be set on classes, ids or directly on the HTML element.

```
.background, #background, body{  
background:#C5935D }
```

If only the background color should be changed can be used:

```
.background{ background-color:#C5935D }
```

This example shows the color as background, it is applied via the CSS property "background".

To optimize and compress your CSS code, you can use our [online CSS compressor and optimizer](#) based on csstidy. If you want to create a linear or radial gradient as background or border, check our [CSS Gradient Generator](#).

Hey! You found this booklet interesting? Support Converting Colors with the new Membership Option!

The pro membership hides all ads, plus gives you double the colors in the color bucket, and more awesome pro features!

[Learn more, Memberships starting at \\$2.50/m!](#)

**Follow me
on Twitter!**

@ConvertingColor