

Converting Colors

Hex(C59883)

Have a look what the booklet for
Hex(C59883) contains.

Hex(C59883)	3
<i>Conversions</i>	4
<i>Details</i>	6
<i>Harmonies</i>	11
<i>Previews</i>	23
<i>Color Blindness Simulation</i>	26
<i>CSS Examples</i>	29

Color

Hex(C59883)

Conversions

Conversions Part 1

Format	Color
Hex	C59883
RGB	197, 152, 131
RGB Percent	77%, 60%, 51%
CMY	0.2275, 0.4039, 0.4863
CMYK	0.00, 0.23, 0.34, 0.23
HSL	19°, 36%, 64%
HSV	19°, 34%, 77%
XYZ	38.3509, 35.9655, 26.3934
YIQ	163.0610, 33.5610, 3.0090

Conversions

Conversions Part 2

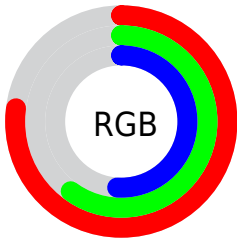
Format	Color
R_{YB}	197, 162, 131
Decimal	12949635
CIE _{Lab}	66.49, 13.90, 17.53
CIE _{LCh}	66, 22.369, 51.590
Yxy	35.9655, 0.3808, 0.3571
Android (android.graphics.Color)	4291139715 (0xFFC59883)
YUV	163.0610, -15.8061, 29.7645
Hunter-Lab	59.9712, 9.1991, 15.8862

Details

The Hex color **C59883** is a light color, and the websafe version is hex **CC9999**. A complement of this color would be **83B0C5**, and the grayscale version is **A3A3A3**.

A 20% lighter version of the original color is **FFCEB8**, and **8E6552** is the 20% darker color. If you saturate the color by 10%, you get **C58B6F**, and if you desaturate by 10%, it is **C5A597**.

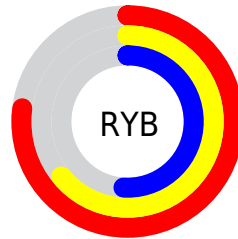
Distribution



Red (77%)

Green (60%)

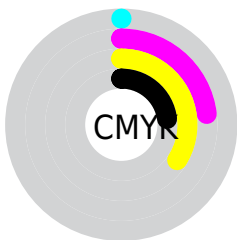
Blue (51%)



Red (77%)

Yellow (64%)

Blue (51%)

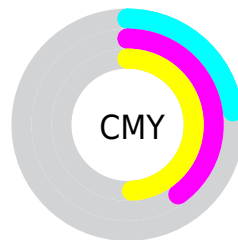


Cyan (0%)

Magenta (23%)

Yellow (34%)

Black (23%)



Cyan (23%)

Magenta (40%)

Yellow (49%)

Brightness & Saturation Gradients

These gradients show how the Hex color C59883 changes by changing the brightness by 10 percent. The first figure shows a shift by +10% for each color and the second figure -10%.

Similar to the brightness gradients but the following saturation gradients show a change of the Hex color C59883 by changing the saturation by 10% instead.

 C59883

 C59883

FFFFFF

 A97E6A

 FFCEB8

 8E6552

 FFEBD4

 734D3A

 FFFFF0

 5A3625

 412010

 290B00

 000000

 C59883

 C59883

 C58B6F

 C5A597

 C57D5C

 C5B3AA

 C57048

 C5C0BE

 C56234

 C5CED2

 C55520

 C5DBE6

 C5470D

 C5E9F9

 C53F00

 C5F6FF

 C5FFFF

Harmonies

Analogous

The Analogous color harmony consists of three colors that are next to each other on the color wheel.



CB9494



C59883



B69E7A

Triad

The Triadic color harmony groups three colors that are evenly spaced from another and form a triangle on the color wheel.



C59883



75AD9B



9E9FC7

Complementary

The Complementary color scheme is a pair of colors which are on the opposite of each other on the color wheel.



C59883



83B0C5

Split Complementary

Split-complementary colors differ from the complementary color scheme. The scheme consists of three colors, the original color and two neighbors of the complement color.



82A5C9



C59883



69ADB0

Square

The Square scheme is like the rectangle color scheme, but the four colors are evenly spaced on the color wheel.



C59883



8AAA88



6DAAC0



B698BB

Rectangle

The Rectangle color scheme consists of four colors that form a rectangle on the color wheel.



C59883



A9A37A



6DAAC0



94A1C9

Sweetspot

The Sweet Spot groups the original color and five complimentary colors.



C59883



FFEEE6



C583B0



807570



000000



808080

Same Dimension

The Same Dimension uses a secret algorithm to generate beautiful new colors.



C59883



FFB999



C5B983



635D5A



A33400



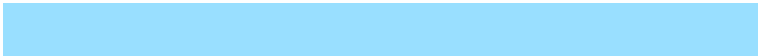
240B00

Inverse Universe

The Inverse Universe completely reimagines the original color for something new.



83B0C5



99DFFF



838FC5



5A6063



006FA3



001824

Previews

White Background



This preview shows how the Hex color C59883 looks on a white background.

Color Contrast Check

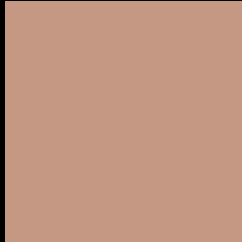
Large Text (above 18pt) WCAG AA × Fail

Any Text WCAG AA × Fail

Large Text (above 18pt) WCAG AAA × Fail

Any Text WCAG AAA × Fail

Black Background



This preview shows how the Hex color C59883 looks on a black background.

Color Contrast Check

Large Text (above 18pt) WCAG AA ✓ Pass

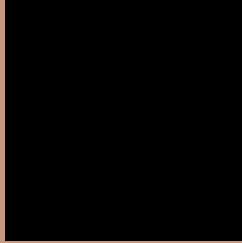
Any Text WCAG AA ✓ Pass

Large Text (above 18pt) WCAG AAA ✓ Pass

Any Text WCAG AAA ✓ Pass

If you want to check with other color combinations, try the [Color Contrast Checker](#).

Hex C59883 Background



This preview shows how black text looks on a background with the Hex color C59883.



This preview shows how white text looks on a background with the Hex color C59883.

Color Blindness Simulation

Color vision deficiency is a very complex topic, and I could not describe the different causes any better than Wikipedia does, so if you want to learn more, you should check out their [article about color blindness](#).

Dichromacy



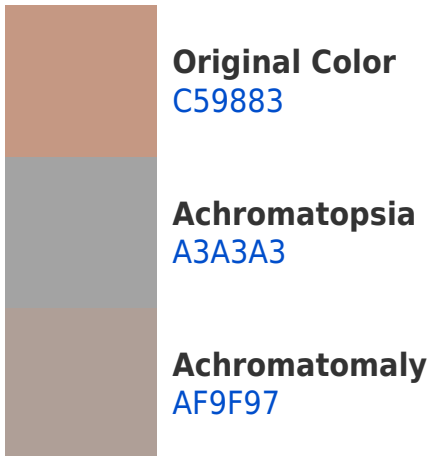


Tritanopia
C8949F

Trichromacy



Monochromacy



CSS Examples

Text

The CSS property to change the color of the text to Hex C59883 is called "color". The color property can be set on classes, ids or directly on the HTML element.

This example shows how text in the color #C59883 looks like.

```
.text, #text, p{  
    color:#C59883  
}
```

If you want to add a text shadow in that color use the text-shadow property, you can generate a text shadow directly with our [CSS Text Shadow Generator](#).

Here you see how black text with a 4 pixel #C59883 colored shadow looks like.

```
.shadow{ text-shadow: 4px 4px 2px #C59883
}
```

Border

The CSS property to change the border of an element to Hex C59883 is called "border". The border property can be set on classes, ids or directly on the HTML element.

This example shows the color as border, it can be applied via the CSS property "border" or "border-color".

```
.border, #border, table{ border:4px solid
#C59883 }
```

If only the border color should be changed use the property `border-color`.

```
.border{ border-color:#C59883 }
```

If you want to add a box shadow in that color use:

Here you see how a box with a 4 pixel #C59883 colored shadow looks like.

```
.boxshadow{ -moz-box-shadow:4px 4px 4px  
4px #C59883; -webkit-box-shadow:4px 4px  
4px 4px #C59883; box-shadow:4px 4px 4px  
4px #C59883 }
```

Background

The CSS property to change the background color of an element to Hex C59883 is called "background". The background property can be set on classes, ids or directly on the HTML element.

```
.background, #background, body{  
background:#C59883 }
```

If only the background color should be changed can be used:

```
.background{ background-color:#C59883 }
```

This example shows the color as background, it is applied via the CSS property "background".

To optimize and compress your CSS code, you can use our [online CSS compressor and optimizer](#) based on csstidy. If you want to create a linear or radial gradient as background or border, check our [CSS Gradient Generator](#).

Hey! You found this booklet interesting? Support Converting Colors with the new Membership Option!

The pro membership hides all ads, plus gives you double the colors in the color bucket, and more awesome pro features!

[Learn more, Memberships starting at \\$2.50/m!](#)

**Follow me
on Twitter!**

@ConvertingColor