

Converting Colors

Hex(C5996D)

Have a look what the booklet for
Hex(C5996D) contains.

Hex(C5996D)	3
<i>Conversions</i>	4
<i>Details</i>	6
<i>Harmonies</i>	11
<i>Previews</i>	23
<i>Color Blindness Simulation</i>	26
<i>CSS Examples</i>	29

Color

Hex(C5996D)

Conversions

Conversions Part 1

Format	Color
Hex	C5996D
RGB	197, 153, 109
RGB Percent	77%, 60%, 43%
CMY	0.2275, 0.4000, 0.5725
CMYK	0.00, 0.22, 0.45, 0.23
HSL	30°, 43%, 60%
HSV	30°, 45%, 77%
XYZ	37.1775, 35.7569, 19.4103
YIQ	161.1400, 40.3480, -4.3560

Conversions

Conversions Part 2

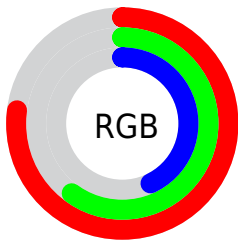
Format	Color
RYB	197, 197, 109
Decimal	12949869
CIELab	66.33, 10.78, 29.39
CIElCh	66, 31.308, 69.862
Yxy	35.7569, 0.4026, 0.3872
Android (android.graphics.Color)	4291139949 (0xFFC5996D)
YUV	161.1400, -25.7050, 31.4492
Hunter-Lab	59.7971, 6.3335, 22.6123

Details

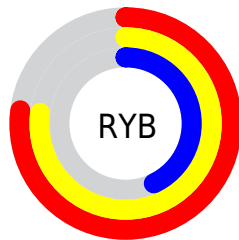
The Hex color **C5996D** is a light color, and the websafe version is hex **CC9966**. A complement of this color would be **6D99C5**, and the grayscale version is **A1A1A1**.

A 20% lighter version of the original color is **FFCFA1**, and **8D663D** is the 20% darker color. If you saturate the color by 10%, you get **C58F59**, and if you desaturate by 10%, it is **C5A381**.

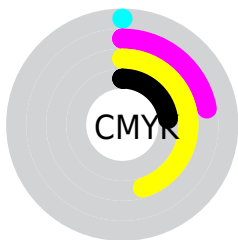
Distribution



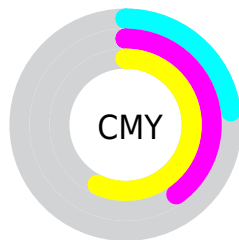
- Red (77%)
- Green (60%)
- Blue (43%)



- Red (77%)
- Yellow (77%)
- Blue (43%)



- Cyan (0%)
- Magenta (22%)
- Yellow (45%)
- Black (23%)



- Cyan (23%)
- Magenta (40%)
- Yellow (57%)

Brightness & Saturation Gradients

These gradients show how the Hex color C5996D changes by changing the brightness by 10 percent. The first figure shows a shift by +10% for each color and the second figure -10%.

Similar to the brightness gradients but the following saturation gradients show a change of the Hex color C5996D by changing the saturation by 10% instead.

 C5996D

 C5996D

FFFFFF

 A97F54

 FFCFA1

 8D663D

 FFECBC

 724E26

 FFFFD8

 583710

 FFFFF5

 3F2200

 260D00

 000000

 C5996D

 C5996D

 C58F59

 C5A381

 C58546

 C5AD94

 C57B32

 C5B7A8

 C5721E

 C5C0BC

 C5680B

 C5CAD0

 C56300

 C5D4E3

 C5DEF7

 C5E8FF

 C5F2FF

Harmonies

Analogous

The Analogous color harmony consists of three colors that are next to each other on the color wheel.



D5907F



C5996D



ABA369

Triad

The Triadic color harmony groups three colors that are evenly spaced from another and form a triangle on the color wheel.



C5996D



4CB1AA



B197CD

Complementary

The Complementary color scheme is a pair of colors which are on the opposite of each other on the color wheel.



C5996D



6D99C5

Split Complementary

Split-complementary colors differ from the complementary color scheme. The scheme consists of three colors, the original color and two neighbors of the complement color.



8AA1D8



C5996D



42AFC4

Square

The Square scheme is like the rectangle color scheme, but the four colors are evenly spaced on the color wheel.



C5996D



6BAF8D



5EA9D5



CC8FB5

Rectangle

The Rectangle color scheme consists of four colors that form a rectangle on the color wheel.



C5996D



97A870



5EA9D5



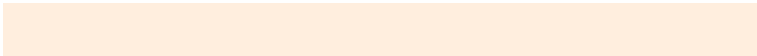
A59AD2

Sweetspot

The Sweet Spot groups the original color and five complimentary colors.



C5996D



FFEEDE



C56D99



80756B



000000



808080

Same Dimension

The Same Dimension uses a secret algorithm to generate beautiful new colors.



C5996D



FFBA75



C5C56D



635E5A



A35200



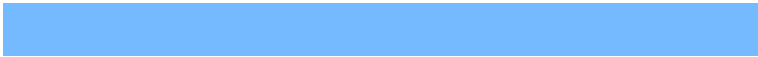
241200

Inverse Universe

The Inverse Universe completely reimagines the original color for something new.



6D99C5



75BAFF



6D6DC5



5A5E63



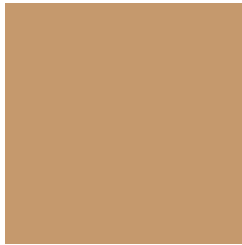
0052A3



001224

Previews

White Background



This preview shows how the Hex color C5996D looks on a white background.

Color Contrast Check

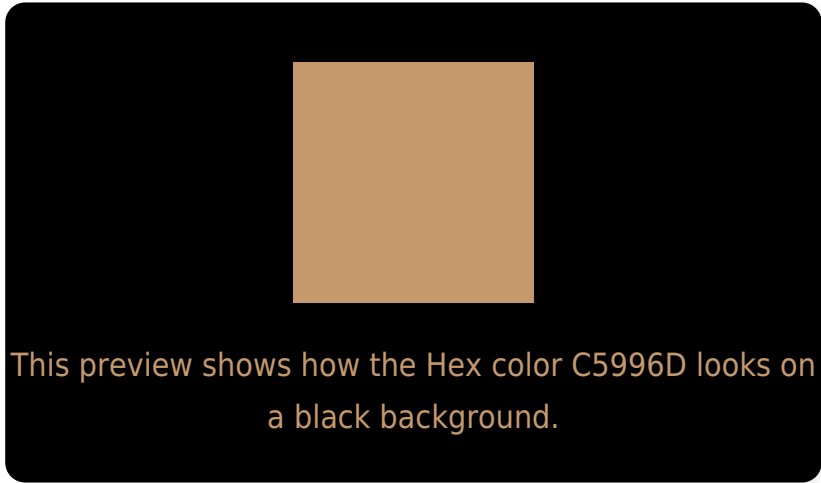
Large Text (above 18pt) WCAG AA × Fail

Any Text WCAG AA × Fail

Large Text (above 18pt) WCAG AAA × Fail

Any Text WCAG AAA × Fail

Black Background



Color Contrast Check

Large Text (above 18pt) WCAG AA ✓ Pass

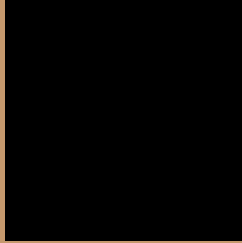
Any Text WCAG AA ✓ Pass

Large Text (above 18pt) WCAG AAA ✓ Pass

Any Text WCAG AAA ✓ Pass

If you want to check with other color combinations, try the [Color Contrast Checker](#).

Hex C5996D Background



This preview shows how black text looks on a background with the Hex color C5996D.




This preview shows how white text looks on a background with the Hex color C5996D.

Color Blindness Simulation

Color vision deficiency is a very complex topic, and I could not describe the different causes any better than Wikipedia does, so if you want to learn more, you should check out their [article about color blindness](#).

Dichromacy





Tritanopia
CA939E

Trichromacy



Monochromacy



CSS Examples

Text

The CSS property to change the color of the text to Hex C5996D is called "color". The color property can be set on classes, ids or directly on the HTML element.

This example shows how text in the color #C5996D looks like.

```
.text, #text, p{  
    color:#C5996D  
}
```

If you want to add a text shadow in that color use the text-shadow property, you can generate a text shadow directly with our [CSS Text Shadow Generator](#).

Here you see how black text with a 4 pixel #C5996D colored shadow looks like.

```
.shadow{ text-shadow: 4px 4px 2px #C5996D
}
```

Border

The CSS property to change the border of an element to Hex C5996D is called "border". The border property can be set on classes, ids or directly on the HTML element.

This example shows the color as border, it can be applied via the CSS property "border" or "border-color".

```
.border, #border, table{ border:4px solid
#C5996D }
```

If only the border color should be changed use the property `border-color`.

```
.border{ border-color:#C5996D }
```

If you want to add a box shadow in that color use:

Here you see how a box with a 4 pixel #C5996D colored shadow looks like.

```
.boxshadow{ -moz-box-shadow:4px 4px 4px  
4px #C5996D; -webkit-box-shadow:4px 4px  
4px 4px #C5996D; box-shadow:4px 4px 4px  
4px #C5996D }
```

Background

The CSS property to change the background color of an element to Hex C5996D is called "background". The background property can be set on classes, ids or directly on the HTML element.

```
.background, #background, body{  
background:#C5996D }
```

If only the background color should be changed can be used:

```
.background{ background-color:#C5996D }
```

This example shows the color as background, it is applied via the CSS property "background".

To optimize and compress your CSS code, you can use our [online CSS compressor and optimizer](#) based on csstidy. If you want to create a linear or radial gradient as background or border, check our [CSS Gradient Generator](#).

Hey! You found this booklet interesting? Support Converting Colors with the new Membership Option!

The pro membership hides all ads, plus gives you double the colors in the color bucket, and more awesome pro features!

[Learn more, Memberships starting at \\$2.50/m!](#)

**Follow me
on Twitter!**

@ConvertingColor