

# Converting Colors

Hex(C59E99)

Have a look what the booklet for  
Hex(C59E99) contains.

<b>Hex(C59E99)</b> .....	3
<i><b>Conversions</b></i> .....	4
<i><b>Details</b></i> .....	6
<i><b>Harmonies</b></i> .....	11
<i><b>Previews</b></i> .....	23
<i><b>Color Blindness Simulation</b></i> .....	26
<i><b>CSS Examples</b></i> .....	29

**Color**

**Hex(C59E99)**

# Conversions

## Conversions Part 1

Format	Color
Hex	C59E99
RGB	197, 158, 153
RGB Percent	77%, 62%, 60%
CMY	0.2275, 0.3804, 0.4000
CMYK	0.00, 0.20, 0.22, 0.23
HSL	7°, 28%, 69%
HSV	7°, 22%, 77%
XYZ	41.0026, 38.6239, 35.4311
YIQ	169.0910, 24.8490, 6.7130

# Conversions

## Conversions Part 2

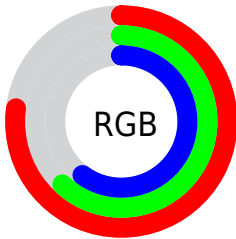
<b>Format</b>	<b>Color</b>
<b>RYB</b>	197, 159, 153
Decimal	12951193
CIELab	68.48, 13.67, 8.09
CIELCh	68, 15.883, 30.610
Yxy	38.6239, 0.3564, 0.3357
Android (android.graphics.Color)	4291141273 (0xFFC59E99)
YUV	169.0910, -7.9329, 24.4762
Hunter-Lab	62.1482, 9.0070, 9.7021

# Details

The Hex color **C59E99** is a light color, and the websafe version is hex **CC9999**. A complement of this color would be **99C0C5**, and the grayscale version is **A9A9A9**.

A 20% lighter version of the original color is **FED5CF**, and **8F6B66** is the 20% darker color. If you saturate the color by 10%, you get **C58D85**, and if you desaturate by 10%, it is **C5AFAD**.

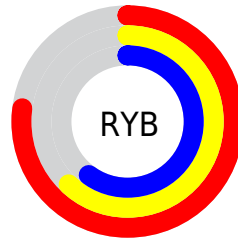
# Distribution



Red (77%)

Green (62%)

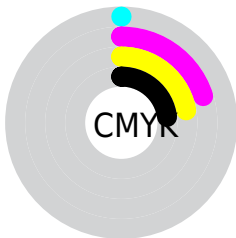
Blue (60%)



Red (77%)

Yellow (62%)

Blue (60%)

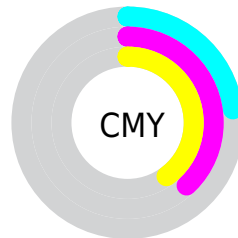


Cyan (0%)

Magenta (20%)

Yellow (22%)

Black (23%)



Cyan (23%)

Magenta (38%)

Yellow (40%)

# Brightness & Saturation Gradients

These gradients show how the Hex color C59E99 changes by changing the brightness by 10 percent. The first figure shows a shift by +10% for each color and the second figure -10%.

Similar to the brightness gradients but the following saturation gradients show a change of the Hex color C59E99 by changing the saturation by 10% instead.



 C59E99

 C59E99

FFFFFF

 A9847F

 FED5CF

 8F6B66


 FFF1EC

 74524E

 5B3B37

 432522

 2C100C

 110000

 000000

 C59E99

 C59E99

 C58D85

 C5AFAD

 C57B72

 C5C1C0

 C56A5E

 C5D2D4

 C5584A

 C5E4E8

 C54737

 C5F5FC

 C53523

 C5FFFF

 C5240F

 C51600

# Harmonies

## Analogous

The Analogous color harmony consists of three colors that are next to each other on the color wheel.



C49DA7



C59E99



BFA18E

# Triad

The Triadic color harmony groups three colors that are evenly spaced from another and form a triangle on the color wheel.



C59E99



92AE99



97A8C3

# Complementary

The Complementary color scheme is a pair of colors which are on the opposite of each other on the color wheel.



C59E99



99C0C5

# Split Complementary

Split-complementary colors differ from the complementary color scheme. The scheme consists of three colors, the original color and two neighbors of the complement color.



88ACBF



C59E99



86AFA7

# Square

The Square scheme is like the rectangle color scheme, but the four colors are evenly spaced on the color wheel.



C59E99



A2AB8E



81AFB5



AAA3C0

# Rectangle

The Rectangle color scheme consists of four colors that form a rectangle on the color wheel.



C59E99



B7A48B



81AFB5



92AAC3



# Sweetspot

The Sweet Spot groups the original color and five complimentary colors.



C59E99



FFEDED



C599C1



807675



000000



808080



# Same Dimension

The Same Dimension uses a secret algorithm to generate beautiful new colors.



C59E99



FFC2BA



C5B399



635B5A



A31300



240400

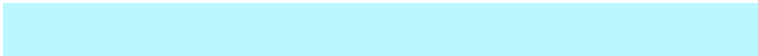


# Inverse Universe

The Inverse Universe completely reimagines the original color for something new.



99C0C5



BAF7FF



99ABC5



5A6263



0091A3

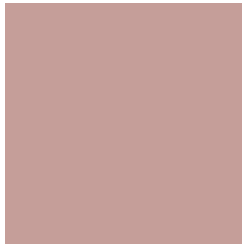


002024



# Previews

## White Background



This preview shows how the Hex color C59E99 looks on a white background.

## Color Contrast Check

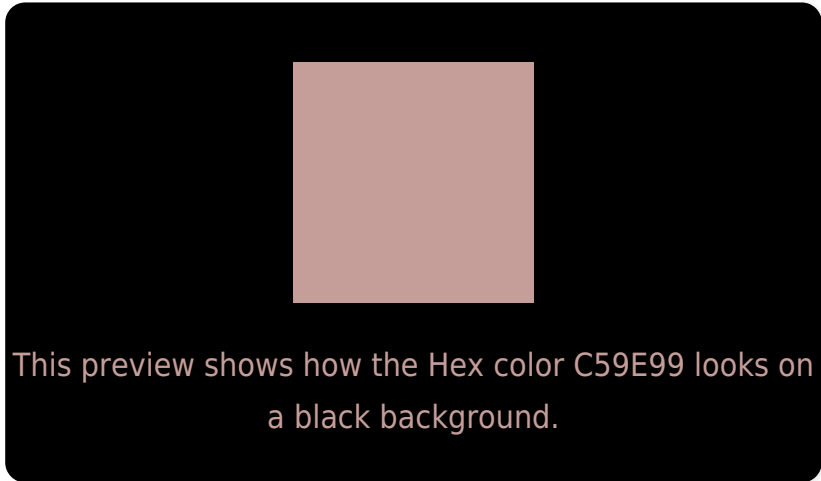
Large Text (above 18pt) WCAG AA × Fail

Any Text WCAG AA × Fail

Large Text (above 18pt) WCAG AAA × Fail

Any Text WCAG AAA × Fail

# Black Background



## Color Contrast Check

Large Text (above 18pt) WCAG AA ✓ Pass

Any Text WCAG AA ✓ Pass

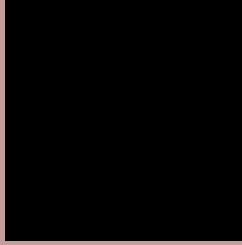
Large Text (above 18pt) WCAG AAA ✓ Pass

Any Text WCAG AAA ✓ Pass

If you want to check with other color combinations, try the [Color Contrast Checker](#).



## Hex C59E99 Background



This preview shows how black text looks on a background with the Hex color C59E99.



This preview shows how white text looks on a background with the Hex color C59E99.

# Color Blindness Simulation

Color vision deficiency is a very complex topic, and I could not describe the different causes any better than Wikipedia does, so if you want to learn more, you should check out their [article about color blindness](#).

## Dichromacy



**Original Color**  
C59E99

**Protanopia**  
ACA79E

**Deuteranopia**  
BDA198



**Tritanopia**  
C79CA8

# Trichromacy



**Original Color**  
C59E99

**Protanomaly**  
B5A49C

**Deuteranomaly**  
C0A098

**Tritanomaly**  
C69DA3

# Monochromacy



**Original Color**  
C59E99

**Achromatopsia**  
A9A9A9

**Achromatomaly**  
B3A5A3

# CSS Examples

## Text

The CSS property to change the color of the text to Hex C59E99 is called "color". The color property can be set on classes, ids or directly on the HTML element.

This example shows how text in the color #C59E99 looks like.

```
.text, #text, p{  
    color:#C59E99  
}
```

If you want to add a text shadow in that color use the text-shadow property, you can generate a text shadow directly with our [CSS Text Shadow Generator](#).

Here you see how black text with a 4 pixel #C59E99 colored shadow looks like.

```
.shadow{ text-shadow: 4px 4px 2px #C59E99
}
```

## Border

The CSS property to change the border of an element to Hex C59E99 is called "border". The border property can be set on classes, ids or directly on the HTML element.

This example shows the color as border, it can be applied via the CSS property "border" or "border-color".

```
.border, #border, table{ border:4px solid
#C59E99 }
```

If only the border color should be changed use the property `border-color`.

```
.border{ border-color:#C59E99 }
```

If you want to add a box shadow in that color use:

Here you see how a box with a 4 pixel #C59E99 colored shadow looks like.

```
.boxshadow{ -moz-box-shadow:4px 4px 4px  
4px #C59E99; -webkit-box-shadow:4px 4px  
4px 4px #C59E99; box-shadow:4px 4px 4px  
4px #C59E99 }
```

# Background

The CSS property to change the background color of an element to Hex C59E99 is called "background". The background property can be set on classes, ids or directly on the HTML element.

```
.background, #background, body{  
background:#C59E99 }
```

If only the background color should be changed can be used:

```
.background{ background-color:#C59E99 }
```

This example shows the color as background, it is applied via the CSS property "background".

To optimize and compress your CSS code, you can use our [online CSS compressor and optimizer](#) based on csstidy. If you want to create a linear or radial gradient as background or border, check our [CSS Gradient Generator](#).



Hey! You found this booklet interesting? Support Converting Colors with the new Membership Option!

The pro membership hides all ads, plus gives you double the colors in the color bucket, and more awesome pro features!

**[Learn more, Memberships starting at \\$2.50/m!](#)**

**Follow me  
on Twitter!**

@ConvertingColor