

# Converting Colors

Hex(C5A3A7)

Have a look what the booklet for  
Hex(C5A3A7) contains.

<b>Hex(C5A3A7)</b> .....	3
<b><i>Conversions</i></b> .....	4
<b><i>Details</i></b> .....	6
<b><i>Harmonies</i></b> .....	11
<b><i>Previews</i></b> .....	23
<b><i>Color Blindness Simulation</i></b> .....	26
<b><i>CSS Examples</i></b> .....	29

# **Color**

**Hex(C5A3A7)**

# Conversions

## Conversions Part 1

<b>Format</b>	<b>Color</b>
Hex	C5A3A7
RGB	197, 163, 167
RGB Percent	77%, 64%, 65%
CMY	0.2275, 0.3608, 0.3451
CMYK	0.00, 0.17, 0.15, 0.23
HSL	353°, 23%, 71%
HSV	353°, 17%, 77%
XYZ	43.0982, 40.8547, 42.1734
YIQ	173.6220, 18.9800, 8.4520

# Conversions

## Conversions Part 2

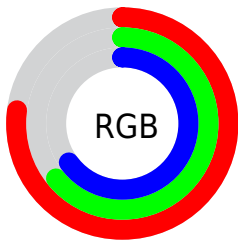
Format	Color
<a href="#">RYB</a>	<a href="#">197, 163, 167</a>
Decimal	<a href="#">12952487</a>
CIELab	<a href="#">70.07, 13.12, 2.62</a>
CIElCh	<a href="#">70, 13.378, 11.272</a>
Yxy	<a href="#">40.8547, 0.3417, 0.3239</a>
Android (android.graphics.Color)	<a href="#">4291142567</a> ( <a href="#">0xFFC5A3A7</a> )
YUV	<a href="#">173.6220, -3.2646, 20.5025</a>
Hunter-Lab	<a href="#">63.9177, 8.5024, 5.6223</a>

# Details

The Hex color **C5A3A7** is a light color, and the websafe version is hex **CC9999**. A complement of this color would be **A3C5C1**, and the grayscale version is **AEAEAE**.

A 20% lighter version of the original color is **FEDADE**, and **8F6F73** is the 20% darker color. If you saturate the color by 10%, you get **C58F96**, and if you desaturate by 10%, it is **C5B7B8**.

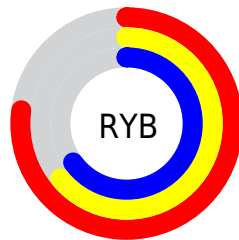
# Distribution



Red (77%)

Green (64%)

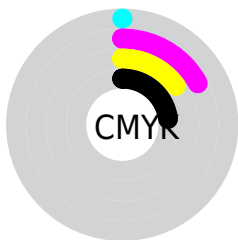
Blue (65%)



Red (77%)

Yellow (64%)

Blue (65%)

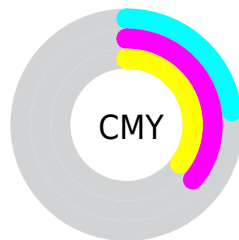


Cyan (0%)

Magenta (17%)

Yellow (15%)

Black (23%)



Cyan (23%)

Magenta (36%)

Yellow (35%)

# Brightness & Saturation Gradients

These gradients show how the Hex color C5A3A7 changes by changing the brightness by 10 percent. The first figure shows a shift by +10% for each color and the second figure -10%.

Similar to the brightness gradients but the following saturation gradients show a change of the Hex color C5A3A7 by changing the saturation by 10% instead.





C5A3A7



C5A3A7

FFFFFF



AA898D



FEDADE



8F6F73



FFF6FB



75575B



5C3F43



44292D



2D1419



1A0001



000000



C5A3A7



C5A3A7

 C58F96

 C5B7B8

 C57C84

 C5CACA

 C56873

 C5DEDB

 C55461

 C5F2ED

 C54150

 C5FFFE

 C52D3F

 C5FFFF

 C5192D

 C5051C

 C50017

# Harmonies

## Analogous

The Analogous color harmony consists of three colors that are next to each other on the color wheel.



BFA4B3



C5A3A7



C4A59C

# Triad

The Triadic color harmony groups three colors that are evenly spaced from another and form a triangle on the color wheel.



C5A3A7



A2AF99



96AFC2

# Complementary

The Complementary color scheme is a pair of colors which are on the opposite of each other on the color wheel.



C5A3A7



A3C5C1

# Split Complementary

Split-complementary colors differ from the complementary color scheme. The scheme consists of three colors, the original color and two neighbors of the complement color.



8DB1BB



C5A3A7



95B2A3

# Square

The Square scheme is like the rectangle color scheme, but the four colors are evenly spaced on the color wheel.



C5A3A7



B0AC94



8DB3B0



A4ABC3

# Rectangle

The Rectangle color scheme consists of four colors that form a rectangle on the color wheel.



C5A3A7



BFA796



8DB3B0



92B0C0



# Sweetspot

The Sweet Spot groups the original color and five complimentary colors.



C5A3A7



FFF2F4



C0A3C5



807879



000000



808080



# Same Dimension

The Same Dimension uses a secret algorithm to generate beautiful new colors.



C5A3A7



FFC9D0



C5AFA3



635A5B



A30013



240004



# Inverse Universe

The Inverse Universe completely reimagines the original color for something new.



C5A3A7



FFC9D0



A3B9C5



635A5B



A30013

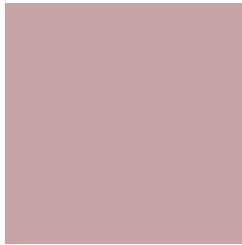


240004



# Previews

## White Background



This preview shows how the Hex color C5A3A7 looks on a white background.

## Color Contrast Check

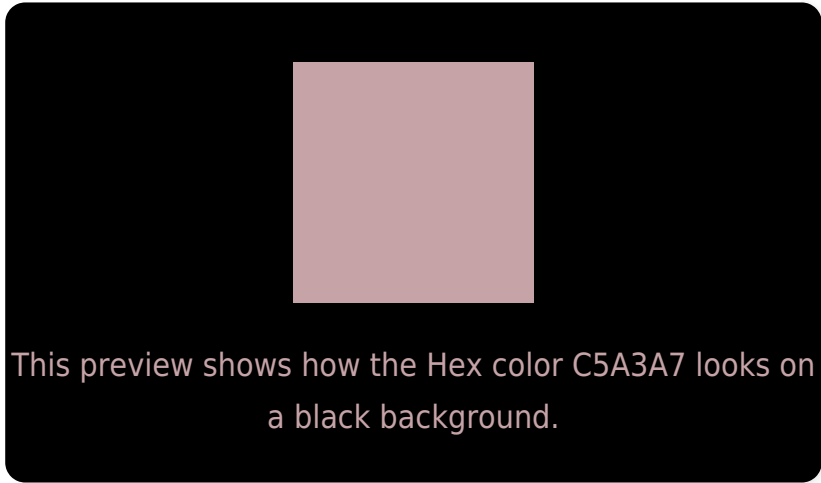
Large Text (above 18pt) WCAG AA × Fail

Any Text WCAG AA × Fail

Large Text (above 18pt) WCAG AAA × Fail

Any Text WCAG AAA × Fail

# Black Background



## Color Contrast Check

Large Text (above 18pt) WCAG AA ✓ Pass

Any Text WCAG AA ✓ Pass

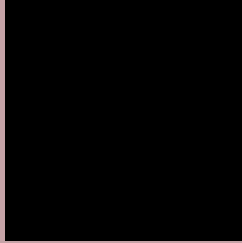
Large Text (above 18pt) WCAG AAA ✓ Pass

Any Text WCAG AAA ✓ Pass

If you want to check with other color combinations, try the [Color Contrast Checker](#).



## Hex C5A3A7 Background



This preview shows how black text looks on a background with the Hex color C5A3A7.



This preview shows how white text looks on a background with the Hex color C5A3A7.

# Color Blindness Simulation

Color vision deficiency is a very complex topic, and I could not describe the different causes any better than Wikipedia does, so if you want to learn more, you should check out their [article about color blindness](#).

## Dichromacy



**Original Color**  
C5A3A7

**Protanopia**  
AEABAB

**Deuteranopia**  
BEA6A6



**Tritanopia**  
C6A2AE

# Trichromacy



**Original Color**  
C5A3A7

**Protanomaly**  
B6A8AA

**Deuteranomaly**  
C1A5A6

**Tritanomaly**  
C6A2AB

# Monochromacy



**Original Color**  
C5A3A7

**Achromatopsia**  
AEAEAE

**Achromatomaly**  
B6AAAB

# CSS Examples

## Text

The CSS property to change the color of the text to Hex C5A3A7 is called "color". The color property can be set on classes, ids or directly on the HTML element.

This example shows how text in the color #C5A3A7 looks like.

```
.text, #text, p{  
    color:#C5A3A7  
}
```

If you want to add a text shadow in that color use the text-shadow property, you can generate a text shadow directly with our [CSS Text Shadow Generator](#).

Here you see how black text with a 4 pixel #C5A3A7 colored shadow looks like.

```
.shadow{ text-shadow: 4px 4px 2px #C5A3A7
}
```

## Border

The CSS property to change the border of an element to Hex C5A3A7 is called "border". The border property can be set on classes, ids or directly on the HTML element.

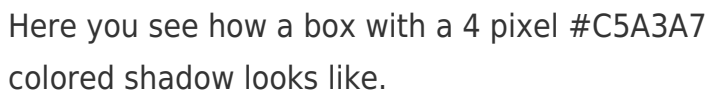
This example shows the color as border, it can be applied via the CSS property "border" or "border-color".

```
.border, #border, table{ border:4px solid
#C5A3A7 }
```

If only the border color should be changed use the property `border-color`.

```
.border{ border-color:#C5A3A7 }
```

If you want to add a box shadow in that color use:



Here you see how a box with a 4 pixel #C5A3A7 colored shadow looks like.

```
.boxshadow{ -moz-box-shadow:4px 4px 4px  
4px #C5A3A7; -webkit-box-shadow:4px 4px  
4px 4px #C5A3A7; box-shadow:4px 4px 4px  
4px #C5A3A7 }
```

# Background

The CSS property to change the background color of an element to Hex C5A3A7 is called "background". The background property can be set on classes, ids or directly on the HTML element.

```
.background, #background, body{  
background:#C5A3A7 }
```

If only the background color should be changed can be used:

```
.background{ background-color:#C5A3A7 }
```

This example shows the color as background, it is applied via the CSS property "background".

To optimize and compress your CSS code, you can use our [online CSS compressor and optimizer](#) based on csstidy. If you want to create a linear or radial gradient as background or border, check our [CSS Gradient Generator](#).



Hey! You found this booklet interesting? Support Converting Colors with the new Membership Option!

The pro membership hides all ads, plus gives you double the colors in the color bucket, and more awesome pro features!

**[Learn more, Memberships starting at \\$2.50/m!](#)**

**Follow me  
on Twitter!**

@ConvertingColor