

Converting Colors

Hex(C5A7A9)

Have a look what the booklet for
Hex(C5A7A9) contains.

Hex(C5A7A9)	3
<i>Conversions</i>	4
<i>Details</i>	6
<i>Harmonies</i>	11
<i>Previews</i>	23
<i>Color Blindness Simulation</i>	26
<i>CSS Examples</i>	29

Color

Hex(C5A7A9)

Conversions

Conversions Part 1

Format	Color
Hex	C5A7A9
RGB	197, 167, 169
RGB Percent	77%, 65%, 66%
CMY	0.2275, 0.3451, 0.3373
CMYK	0.00, 0.15, 0.14, 0.23
HSL	356°, 21%, 71%
HSV	356°, 15%, 77%
XYZ	44.0061, 42.3723, 43.3954
YIQ	176.1980, 17.2380, 6.9820

Conversions

Conversions Part 2

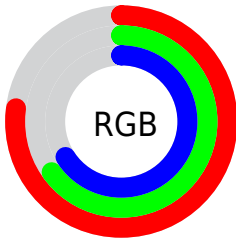
Format	Color
RYB	197, 167, 169
Decimal	12953513
CIELab	71.13, 11.26, 3.04
CIELCh	71, 11.663, 15.087
Yxy	42.3723, 0.3391, 0.3265
Android (android.graphics.Color)	4291143593 (0xFFC5A7A9)
YUV	176.1980, -3.5486, 18.2434
Hunter-Lab	65.0940, 6.7584, 6.0397

Details

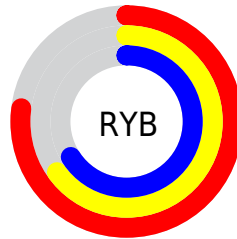
The Hex color **C5A7A9** is a light color, and the websafe version is hex **CC9999**. A complement of this color would be **A7C5C3**, and the grayscale version is **B0B0B0**.

A 20% lighter version of the original color is **FEDEE0**, and **8F7375** is the 20% darker color. If you saturate the color by 10%, you get **C59397**, and if you desaturate by 10%, it is **C5BBBB**.

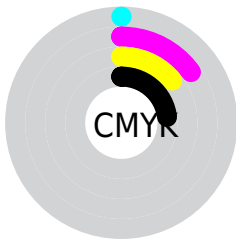
Distribution



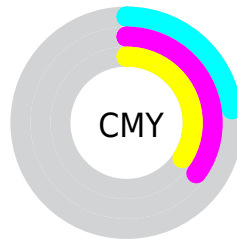
- Red (77%)
- Green (65%)
- Blue (66%)



- Red (77%)
- Yellow (65%)
- Blue (66%)



- Cyan (0%)
- Magenta (15%)
- Yellow (14%)
- Black (23%)



- Cyan (23%)
- Magenta (35%)
- Yellow (34%)

Brightness & Saturation Gradients

These gradients show how the Hex color C5A7A9 changes by changing the brightness by 10 percent. The first figure shows a shift by +10% for each color and the second figure -10%.

Similar to the brightness gradients but the following saturation gradients show a change of the Hex color C5A7A9 by changing the saturation by 10% instead.

 C5A7A9

FFFFFF

 FEDEE0

 FFFBFD

 C5A7A9

 AA8D8F

 8F7375

 755A5C

 5C4345

 442D2F

 2D181A

 1B0000

 000000

 C5A7A9

 C5A7A9

 C59397

 C5BBBB

 C58084

 C5CECE

 C56C72

 C5E2E0

 C5585F

 C5F6F3

 C5444D

 C5FFFF

 C5313B

 C51D28

 C50916

 C5000D

Harmonies

Analogous

The Analogous color harmony consists of three colors that are next to each other on the color wheel.



C1A7B4



C5A7A9



C3A99F

Triad

The Triadic color harmony groups three colors that are evenly spaced from another and form a triangle on the color wheel.



C5A7A9



A5B29F



9DB1C2

Complementary

The Complementary color scheme is a pair of colors which are on the opposite of each other on the color wheel.



C5A7A9



A7C5C3

Split Complementary

Split-complementary colors differ from the complementary color scheme. The scheme consists of three colors, the original color and two neighbors of the complement color.



95B3BD



C5A7A9



9AB4A8

Square

The Square scheme is like the rectangle color scheme, but the four colors are evenly spaced on the color wheel.



C5A7A9



B1AF9A



94B4B3



AAADC2

Rectangle

The Rectangle color scheme consists of four colors that form a rectangle on the color wheel.



C5A7A9



BFAA9B



94B4B3



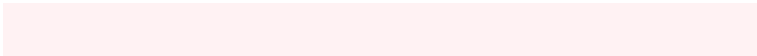
9AB2C1

Sweetspot

The Sweet Spot groups the original color and five complimentary colors.



C5A7A9



FFF2F3



C3A7C5



807878



000000



808080

Same Dimension

The Same Dimension uses a secret algorithm to generate beautiful new colors.



C5A7A9



FFD1D4



C5B4A7



635A5A



A3000B



240002

Inverse Universe

The Inverse Universe completely reimagines the original color for something new.



C5A7A9



FFD1D4



A7B8C5



635A5A



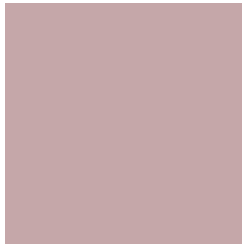
A3000B



240002

Previews

White Background



This preview shows how the Hex color C5A7A9 looks on a white background.

Color Contrast Check

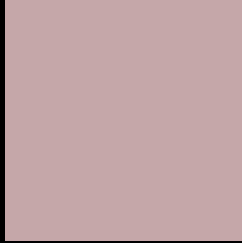
Large Text (above 18pt) WCAG AA × Fail

Any Text WCAG AA × Fail

Large Text (above 18pt) WCAG AAA × Fail

Any Text WCAG AAA × Fail

Black Background



This preview shows how the Hex color C5A7A9 looks on a black background.

Color Contrast Check

Large Text (above 18pt) WCAG AA ✓ Pass

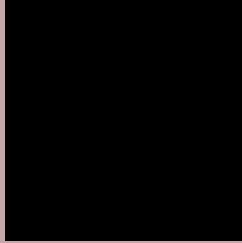
Any Text WCAG AA ✓ Pass

Large Text (above 18pt) WCAG AAA ✓ Pass

Any Text WCAG AAA ✓ Pass

If you want to check with other color combinations, try the [Color Contrast Checker](#).

Hex C5A7A9 Background



This preview shows how black text looks on a background with the Hex color C5A7A9.



This preview shows how white text looks on a background with the Hex color C5A7A9.

Color Blindness Simulation

Color vision deficiency is a very complex topic, and I could not describe the different causes any better than Wikipedia does, so if you want to learn more, you should check out their [article about color blindness](#).

Dichromacy



Original Color
C5A7A9

Protanopia
B2ADAD

Deuteranopia
C1A8A9



Tritanopia
C6A6B2

Trichromacy



Original Color
C5A7A9

Protanomaly
B9ABAC

Deuteranomaly
C2A8A9

Tritanomaly
C6A6AF

Monochromacy



Original Color
C5A7A9

Achromatopsia
B0B0B0

Achromatomaly
B8ADAD

CSS Examples

Text

The CSS property to change the color of the text to Hex C5A7A9 is called "color". The color property can be set on classes, ids or directly on the HTML element.

This example shows how text in the color #C5A7A9 looks like.

```
.text, #text, p{  
    color:#C5A7A9  
}
```

If you want to add a text shadow in that color use the text-shadow property, you can generate a text shadow directly with our [CSS Text Shadow Generator](#).

Here you see how black text with a 4 pixel #C5A7A9 colored shadow looks like.

```
.shadow{ text-shadow: 4px 4px 2px #C5A7A9
}
```

Border

The CSS property to change the border of an element to Hex C5A7A9 is called "border". The border property can be set on classes, ids or directly on the HTML element.

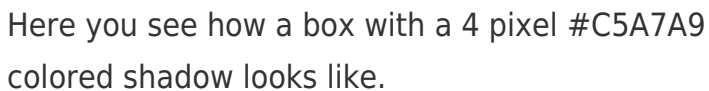
This example shows the color as border, it can be applied via the CSS property "border" or "border-color".

```
.border, #border, table{ border:4px solid
#C5A7A9 }
```

If only the border color should be changed use the property `border-color`.

```
.border{ border-color:#C5A7A9 }
```

If you want to add a box shadow in that color use:



Here you see how a box with a 4 pixel #C5A7A9 colored shadow looks like.

```
.boxshadow{ -moz-box-shadow:4px 4px 4px  
4px #C5A7A9; -webkit-box-shadow:4px 4px  
4px 4px #C5A7A9; box-shadow:4px 4px 4px  
4px #C5A7A9 }
```

Background

The CSS property to change the background color of an element to Hex C5A7A9 is called "background". The background property can be set on classes, ids or directly on the HTML element.

```
.background, #background, body{  
background:#C5A7A9 }
```

If only the background color should be changed can be used:

```
.background{ background-color:#C5A7A9 }
```

This example shows the color as background, it is applied via the CSS property "background".

To optimize and compress your CSS code, you can use our [online CSS compressor and optimizer](#) based on csstidy. If you want to create a linear or radial gradient as background or border, check our [CSS Gradient Generator](#).

Hey! You found this booklet interesting? Support Converting Colors with the new Membership Option!

The pro membership hides all ads, plus gives you double the colors in the color bucket, and more awesome pro features!

[Learn more, Memberships starting at \\$2.50/m!](#)

**Follow me
on Twitter!**

@ConvertingColor