

Converting Colors

Hex(C5A7AE)

Have a look what the booklet for
Hex(C5A7AE) contains.

Hex(C5A7AE)	3
<i>Conversions</i>	4
<i>Details</i>	6
<i>Harmonies</i>	11
<i>Previews</i>	23
<i>Color Blindness Simulation</i>	26
<i>CSS Examples</i>	29

Color

Hex(C5A7AE)

Conversions

Conversions Part 1

Format	Color
Hex	C5A7AE
RGB	197, 167, 174
RGB Percent	77%, 65%, 68%
CMY	0.2275, 0.3451, 0.3176
CMYK	0.00, 0.15, 0.12, 0.23
HSL	346°, 21%, 71%
HSV	346°, 15%, 77%
XYZ	44.4847, 42.5637, 45.9154
YIQ	176.7680, 15.6330, 8.5370

Conversions

Conversions Part 2

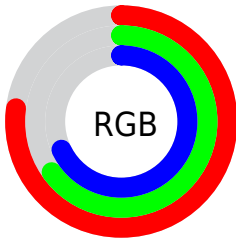
Format	Color
RYB	197, 167, 174
Decimal	12953518
CIELab	71.26, 12.09, 0.47
CIElCh	71, 12.102, 2.206
Yxy	42.5637, 0.3346, 0.3201
Android (android.graphics.Color)	4291143598 (0xFFC5A7AE)
YUV	176.7680, -1.3646, 17.7435
Hunter-Lab	65.2409, 7.5391, 3.9413

Details

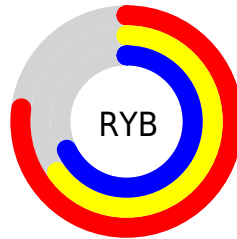
The Hex color **C5A7AE** is a light color, and the websafe version is hex **CC9999**. A complement of this color would be **A7C5BE**, and the grayscale version is **B1B1B1**.

A 20% lighter version of the original color is **FEDEE5**, and **8F737A** is the 20% darker color. If you saturate the color by 10%, you get **C5939F**, and if you desaturate by 10%, it is **C5BBBD**.

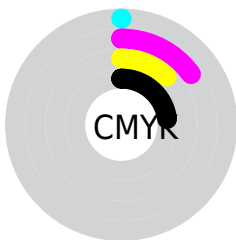
Distribution



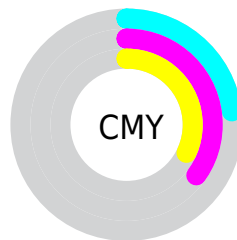
- Red (77%)
- Green (65%)
- Blue (68%)



- Red (77%)
- Yellow (65%)
- Blue (68%)



- Cyan (0%)
- Magenta (15%)
- Yellow (12%)
- Black (23%)



- Cyan (23%)
- Magenta (35%)
- Yellow (32%)

Brightness & Saturation Gradients

These gradients show how the Hex color C5A7AE changes by changing the brightness by 10 percent. The first figure shows a shift by +10% for each color and the second figure -10%.

Similar to the brightness gradients but the following saturation gradients show a change of the Hex color C5A7AE by changing the saturation by 10% instead.

 C5A7AE

 C5A7AE

FFFFFF

 AA8D93

 FEDEE5

 8F737A

 FFFBFF

 755A61

 5C4349

 442C33

 2E181E

 1B0004

 000000

 C5A7AE

 C5A7AE

 C5939F

 C5BBBD

 C58090

 C5CECC

 C56C81

 C5E2DB

 C55872

 C5F6EA

 C54462

 C5FFFA

 C53153

 C5FFFF

 C51D44

 C50935

 C5002E

Harmonies

Analogous

The Analogous color harmony consists of three colors that are next to each other on the color wheel.



BEA8B9



C5A7AE



C6A8A3

Triad

The Triadic color harmony groups three colors that are evenly spaced from another and form a triangle on the color wheel.



C5A7AE



AAB19C



98B2C2

Complementary

The Complementary color scheme is a pair of colors which are on the opposite of each other on the color wheel.



C5A7AE



A7C5BE

Split Complementary

Split-complementary colors differ from the complementary color scheme. The scheme consists of three colors, the original color and two neighbors of the complement color.



93B5BA



C5A7AE



9EB4A4

Square

The Square scheme is like the rectangle color scheme, but the four colors are evenly spaced on the color wheel.



C5A7AE



B7AE99



95B5AF



A4AFC4

Rectangle

The Rectangle color scheme consists of four colors that form a rectangle on the color wheel.



C5A7AE



C3A99D



95B5AF



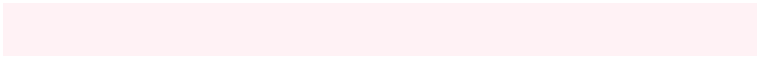
95B3BF

Sweetspot

The Sweet Spot groups the original color and five complimentary colors.



C5A7AE



FFF2F5



BEA7C5



80787A



000000



808080

Same Dimension

The Same Dimension uses a secret algorithm to generate beautiful new colors.



C5A7AE



FFD1DC



C5AFA7



635A5C



A30026



240008

Inverse Universe

The Inverse Universe completely reimagines the original color for something new.



C5A7AE



FFD1DC



A7BDC5



635A5C



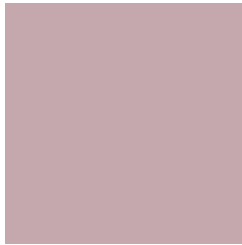
A30026



240008

Previews

White Background



This preview shows how the Hex color C5A7AE looks on a white background.

Color Contrast Check

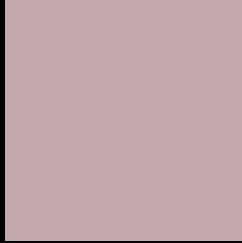
Large Text (above 18pt) WCAG AA × Fail

Any Text WCAG AA × Fail

Large Text (above 18pt) WCAG AAA × Fail

Any Text WCAG AAA × Fail

Black Background



This preview shows how the Hex color C5A7AE looks on a black background.

Color Contrast Check

Large Text (above 18pt) WCAG AA ✓ Pass

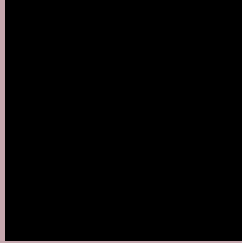
Any Text WCAG AA ✓ Pass

Large Text (above 18pt) WCAG AAA ✓ Pass

Any Text WCAG AAA ✓ Pass

If you want to check with other color combinations, try the [Color Contrast Checker](#).

Hex C5A7AE Background



This preview shows how black text looks on a background with the Hex color C5A7AE.



This preview shows how white text looks on a background with the Hex color C5A7AE.

Color Blindness Simulation

Color vision deficiency is a very complex topic, and I could not describe the different causes any better than Wikipedia does, so if you want to learn more, you should check out their [article about color blindness](#).

Dichromacy





Tritanopia
C6A6B3

Trichromacy



Original Color
C5A7AE

Protanomaly
B8ABB1

Deuteranomaly
C2A8AE

Tritanomaly
C6A6B1

Monochromacy



Original Color
C5A7AE

Achromatopsia
B1B1B1

Achromatomaly
B8ADB0

CSS Examples

Text

The CSS property to change the color of the text to Hex C5A7AE is called "color". The color property can be set on classes, ids or directly on the HTML element.

This example shows how text in the color #C5A7AE looks like.

```
.text, #text, p{  
    color:#C5A7AE  
}
```

If you want to add a text shadow in that color use the text-shadow property, you can generate a text shadow directly with our [CSS Text Shadow Generator](#).

Here you see how black text with a 4 pixel #C5A7AE colored shadow looks like.

```
.shadow{ text-shadow: 4px 4px 2px #C5A7AE
}
```

Border

The CSS property to change the border of an element to Hex C5A7AE is called "border". The border property can be set on classes, ids or directly on the HTML element.

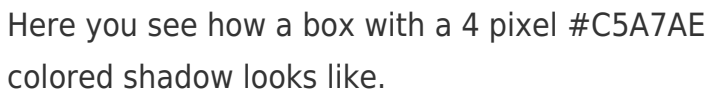
This example shows the color as border, it can be applied via the CSS property "border" or "border-color".

```
.border, #border, table{ border:4px solid
#C5A7AE }
```

If only the border color should be changed use the property `border-color`.

```
.border{ border-color:#C5A7AE }
```

If you want to add a box shadow in that color use:



Here you see how a box with a 4 pixel #C5A7AE colored shadow looks like.

```
.boxshadow{ -moz-box-shadow:4px 4px 4px  
4px #C5A7AE; -webkit-box-shadow:4px 4px  
4px 4px #C5A7AE; box-shadow:4px 4px 4px  
4px #C5A7AE }
```

Background

The CSS property to change the background color of an element to Hex C5A7AE is called "background". The background property can be set on classes, ids or directly on the HTML element.

```
.background, #background, body{  
background:#C5A7AE }
```

If only the background color should be changed can be used:

```
.background{ background-color:#C5A7AE }
```

This example shows the color as background, it is applied via the CSS property "background".

To optimize and compress your CSS code, you can use our [online CSS compressor and optimizer](#) based on csstidy. If you want to create a linear or radial gradient as background or border, check our [CSS Gradient Generator](#).

Hey! You found this booklet interesting? Support Converting Colors with the new Membership Option!

The pro membership hides all ads, plus gives you double the colors in the color bucket, and more awesome pro features!

[Learn more, Memberships starting at \\$2.50/m!](#)

**Follow me
on Twitter!**

@ConvertingColor