

Converting Colors

Hex(C5AEB2)

Have a look what the booklet for
Hex(C5AEB2) contains.

Hex(C5AEB2)	3
<i>Conversions</i>	4
<i>Details</i>	6
<i>Harmonies</i>	11
<i>Previews</i>	23
<i>Color Blindness Simulation</i>	26
<i>CSS Examples</i>	29

Color

Hex(C5AEB2)

Conversions

Conversions Part 1

Format	Color
Hex	C5AEB2
RGB	197, 174, 178
RGB Percent	77%, 68%, 70%
CMY	0.2275, 0.3176, 0.3020
CMYK	0.00, 0.12, 0.10, 0.23
HSL	350°, 17%, 73%
HSV	350°, 12%, 77%
XYZ	46.1979, 45.3568, 48.4393
YIQ	181.3330, 12.4240, 6.1200

Conversions

Conversions Part 2

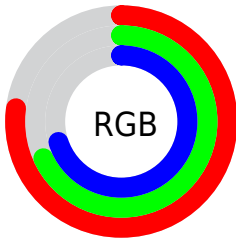
Format	Color
RYB	197, 174, 178
Decimal	12955314
CIELab	73.13, 8.96, 0.99
CIELCh	73, 9.015, 6.292
Yxy	45.3568, 0.3300, 0.3240
Android (android.graphics.Color)	4291145394 (0xFFC5AEB2)
YUV	181.3330, -1.6432, 13.7400
Hunter-Lab	67.3474, 4.5865, 4.4992

Details

The Hex color **C5AEB2** is a light color, and the websafe version is hex **CCCCCC**. A complement of this color would be **AEC5C1**, and the grayscale version is **B5B5B5**.

A 20% lighter version of the original color is **FEE5EA**, and **8F7A7D** is the 20% darker color. If you saturate the color by 10%, you get **C59AA2**, and if you desaturate by 10%, it is **C5C2C2**.

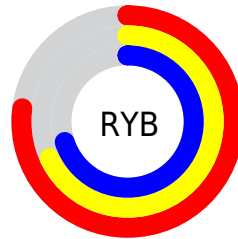
Distribution



Red (77%)

Green (68%)

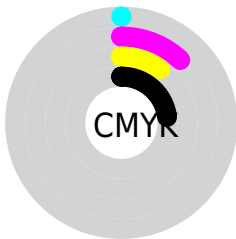
Blue (70%)



Red (77%)

Yellow (68%)

Blue (70%)

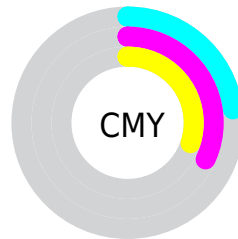


Cyan (0%)

Magenta (12%)

Yellow (10%)

Black (23%)



Cyan (23%)

Magenta (32%)

Yellow (30%)

Brightness & Saturation Gradients

These gradients show how the Hex color C5AEB2 changes by changing the brightness by 10 percent. The first figure shows a shift by +10% for each color and the second figure -10%.

Similar to the brightness gradients but the following saturation gradients show a change of the Hex color C5AEB2 by changing the saturation by 10% instead.

 C5AEB2

 C5AEB2

FFFFFF

 AA9397

 FEE5EA

 8F7A7D

 756164

 5D494D

 453236

 2E1D21

 1B0409

 000000

 C5AEB2

 C5AEB2

 C59AA2

 C5C2C2

 C58791

 C5D5D3

 C57381

 C5E9E3

 C55F71

 C5FDF3

 C54C61

 C5FFFF

 C53850

 C52440

 C51030

 C50022

Harmonies

Analogous

The Analogous color harmony consists of three colors that are next to each other on the color wheel.



C0AFBA



C5AEB2



C5AFAA

Triad

The Triadic color harmony groups three colors that are evenly spaced from another and form a triangle on the color wheel.



C5AEB2



AFB6A6



A4B6C2

Complementary

The Complementary color scheme is a pair of colors which are on the opposite of each other on the color wheel.



C5AEB2



AEC5C1

Split Complementary

Split-complementary colors differ from the complementary color scheme. The scheme consists of three colors, the original color and two neighbors of the complement color.



A0B8BD



C5AEB2



A6B8AD

Square

The Square scheme is like the rectangle color scheme, but the four colors are evenly spaced on the color wheel.



C5AEB2



B9B3A3



A0B9B5



ADB4C4

Rectangle

The Rectangle color scheme consists of four colors that form a rectangle on the color wheel.



C5AEB2



C3B0A6



A0B9B5



A2B7C1

Sweetspot

The Sweet Spot groups the original color and five complimentary colors.



C5AEB2



FFF5F7



C1AEC5



80797A



000000



808080

Same Dimension

The Same Dimension uses a secret algorithm to generate beautiful new colors.



C5AEB2



FFDBE2



C5B5AE



635A5B



A3001C



240006

Inverse Universe

The Inverse Universe completely reimagines the original color for something new.



C5AEB2



FFDBE2



AEBEC5



635A5B



A3001C



240006

Previews

White Background



This preview shows how the Hex color C5AEB2 looks on a white background.

Color Contrast Check

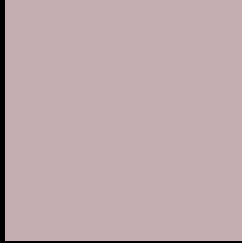
Large Text (above 18pt) WCAG AA × Fail

Any Text WCAG AA × Fail

Large Text (above 18pt) WCAG AAA × Fail

Any Text WCAG AAA × Fail

Black Background



This preview shows how the Hex color C5AEB2 looks on a black background.

Color Contrast Check

Large Text (above 18pt) WCAG AA ✓ Pass

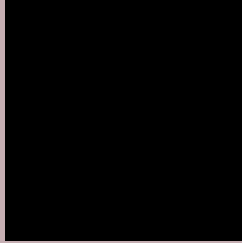
Any Text WCAG AA ✓ Pass

Large Text (above 18pt) WCAG AAA ✓ Pass

Any Text WCAG AAA ✓ Pass

If you want to check with other color combinations, try the [Color Contrast Checker](#).

Hex C5AEB2 Background



This preview shows how black text looks on a background with the Hex color C5AEB2.



This preview shows how white text looks on a background with the Hex color C5AEB2.

Color Blindness Simulation

Color vision deficiency is a very complex topic, and I could not describe the different causes any better than Wikipedia does, so if you want to learn more, you should check out their [article about color blindness](#).

Dichromacy



Original Color
C5AEB2

Protanopia
B6B3B5

Deuteranopia
C5AEB2



Tritanopia
C6ADBA

Trichromacy



Original Color
C5AEB2

Protanomaly
BBB1B4

Deuteranomaly
C5AEB2

Tritanomaly
C6ADB7

Monochromacy



Original Color
C5AEB2

Achromatopsia
B5B5B5

Achromatomaly
BBB2B4

CSS Examples

Text

The CSS property to change the color of the text to Hex C5AEB2 is called "color". The color property can be set on classes, ids or directly on the HTML element.

This example shows how text in the color #C5AEB2 looks like.

```
.text, #text, p{  
    color:#C5AEB2  
}
```

If you want to add a text shadow in that color use the text-shadow property, you can generate a text shadow directly with our [CSS Text Shadow Generator](#).

Here you see how black text with a 4 pixel #C5AEB2 colored shadow looks like.

```
.shadow{ text-shadow: 4px 4px 2px #C5AEB2  
}
```

Border

The CSS property to change the border of an element to Hex C5AEB2 is called "border". The border property can be set on classes, ids or directly on the HTML element.

This example shows the color as border, it can be applied via the CSS property "border" or "border-color".

```
.border, #border, table{ border:4px solid  
#C5AEB2 }
```

If only the border color should be changed use the property `border-color`.

```
.border{ border-color:#C5AEB2 }
```

If you want to add a box shadow in that color use:

Here you see how a box with a 4 pixel #C5AEB2 colored shadow looks like.

```
.boxshadow{ -moz-box-shadow:4px 4px 4px  
4px #C5AEB2; -webkit-box-shadow:4px 4px  
4px 4px #C5AEB2; box-shadow:4px 4px 4px  
4px #C5AEB2 }
```

Background

The CSS property to change the background color of an element to Hex C5AEB2 is called "background". The background property can be set on classes, ids or directly on the HTML element.

```
.background, #background, body{  
background:#C5AEB2 }
```

If only the background color should be changed can be used:

```
.background{ background-color:#C5AEB2 }
```

This example shows the color as background, it is applied via the CSS property "background".

To optimize and compress your CSS code, you can use our [online CSS compressor and optimizer](#) based on csstidy. If you want to create a linear or radial gradient as background or border, check our [CSS Gradient Generator](#).

Hey! You found this booklet interesting? Support Converting Colors with the new Membership Option!

The pro membership hides all ads, plus gives you double the colors in the color bucket, and more awesome pro features!

[Learn more, Memberships starting at \\$2.50/m!](#)

**Follow me
on Twitter!**

@ConvertingColor