

Converting Colors

Hex(C5AFA9)

Have a look what the booklet for
Hex(C5AFA9) contains.

Hex(C5AFA9)	3
<i>Conversions</i>	4
<i>Details</i>	6
<i>Harmonies</i>	11
<i>Previews</i>	23
<i>Color Blindness Simulation</i>	26
<i>CSS Examples</i>	29

Color

Hex(C5AFA9)

Conversions

Conversions Part 1

Format	Color
Hex	C5AFA9
RGB	197, 175, 169
RGB Percent	77%, 69%, 66%
CMY	0.2275, 0.3137, 0.3373
CMYK	0.00, 0.11, 0.14, 0.23
HSL	13°, 19%, 72%
HSV	13°, 14%, 77%
XYZ	45.5174, 45.3948, 43.8992
YIQ	180.8940, 15.0380, 2.7980

Conversions

Conversions Part 2

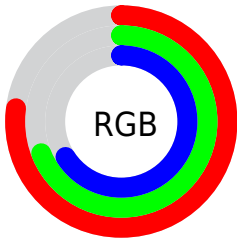
Format	Color
RYB	197, 177, 169
Decimal	12955561
CIELab	73.15, 6.91, 5.96
CIELCh	73, 9.127, 40.756
Yxy	45.3948, 0.3376, 0.3367
Android (android.graphics.Color)	4291145641 (0xFFC5AFA9)
YUV	180.8940, -5.8637, 14.1250
Hunter-Lab	67.3757, 2.6828, 8.5321

Details

The Hex color **C5AFA9** is a light color, and the websafe version is hex **CCCCCC**. A complement of this color would be **A9BFC5**, and the grayscale version is **B5B5B5**.

A 20% lighter version of the original color is **FEE7E0**, and **8F7B75** is the 20% darker color. If you saturate the color by 10%, you get **C5A095**, and if you desaturate by 10%, it is **C5BEBD**.

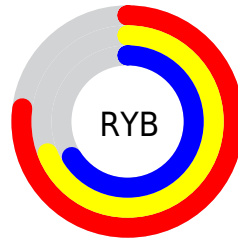
Distribution



Red (77%)

Green (69%)

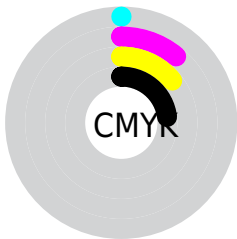
Blue (66%)



Red (77%)

Yellow (69%)

Blue (66%)

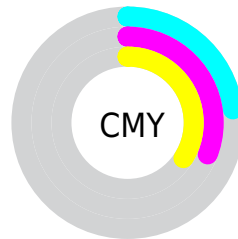


Cyan (0%)

Magenta (11%)

Yellow (14%)

Black (23%)



Cyan (23%)

Magenta (31%)

Yellow (34%)

Brightness & Saturation Gradients

These gradients show how the Hex color C5AFA9 changes by changing the brightness by 10 percent. The first figure shows a shift by +10% for each color and the second figure -10%.

Similar to the brightness gradients but the following saturation gradients show a change of the Hex color C5AFA9 by changing the saturation by 10% instead.

 C5AFA9

 C5AFA9

FFFFFF

 AA948F

 FEE7E0

 8F7B75

FFFFFFD

 75625C

 5C4A45

 45332F

 2E1E1A

 1B0600

 000000

 C5AFA9

 C5AFA9

 C5A095

 C5BEBD

 C59082

 C5CED0

 C5816E

 C5DDE4

 C5715A

 C5EDF8

 C56246

 C5FCFF

 C55233

 C5FFFF

 C5431F

 C5330B

 C52A00

Harmonies

Analogous

The Analogous color harmony consists of three colors that are next to each other on the color wheel.



C6AEB1



C5AFA9



C0B1A4

Triad

The Triadic color harmony groups three colors that are evenly spaced from another and form a triangle on the color wheel.



C5AFA9



A5B8AE



AFB3C4

Complementary

The Complementary color scheme is a pair of colors which are on the opposite of each other on the color wheel.



C5AFA9



A9BFC5

Split Complementary

Split-complementary colors differ from the complementary color scheme. The scheme consists of three colors, the original color and two neighbors of the complement color.



A5B6C3



C5AFA9



A0B9B6

Square

The Square scheme is like the rectangle color scheme, but the four colors are evenly spaced on the color wheel.



C5AFA9



AEB6A7



A0B8BE



B9B1C0

Rectangle

The Rectangle color scheme consists of four colors that form a rectangle on the color wheel.



C5AFA9



BBB3A3



A0B8BE



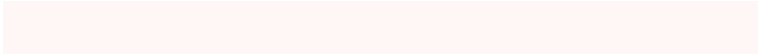
ABB4C4

Sweetspot

The Sweet Spot groups the original color and five complimentary colors.



C5AFA9



FFF7F5



C5A9BF



807A79



000000



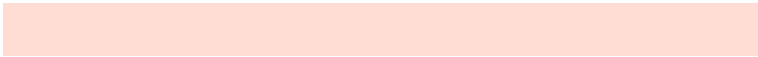
808080

Same Dimension

The Same Dimension uses a secret algorithm to generate beautiful new colors.



C5AFA9



FFDDD4



C5BDA9



635C5A



A32300



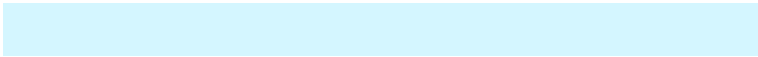
240800

Inverse Universe

The Inverse Universe completely reimagines the original color for something new.



A9BFC5



D4F6FF



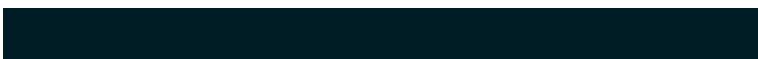
A9B1C5



5A6163



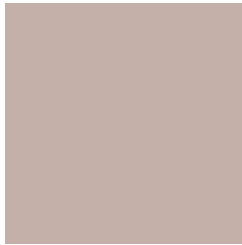
0080A3



001C24

Previews

White Background



This preview shows how the Hex color C5AFA9 looks on a white background.

Color Contrast Check

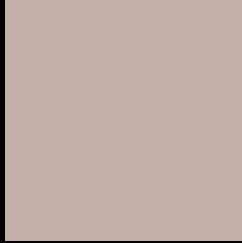
Large Text (above 18pt) WCAG AA × Fail

Any Text WCAG AA × Fail

Large Text (above 18pt) WCAG AAA × Fail

Any Text WCAG AAA × Fail

Black Background



This preview shows how the Hex color C5AFA9 looks on a black background.

Color Contrast Check

Large Text (above 18pt) WCAG AA ✓ Pass

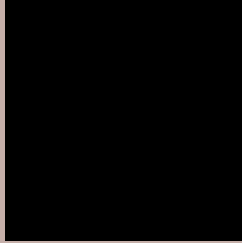
Any Text WCAG AA ✓ Pass

Large Text (above 18pt) WCAG AAA ✓ Pass

Any Text WCAG AAA ✓ Pass

If you want to check with other color combinations, try the [Color Contrast Checker](#).

Hex C5AFA9 Background



This preview shows how black text looks on a background with the Hex color C5AFA9.

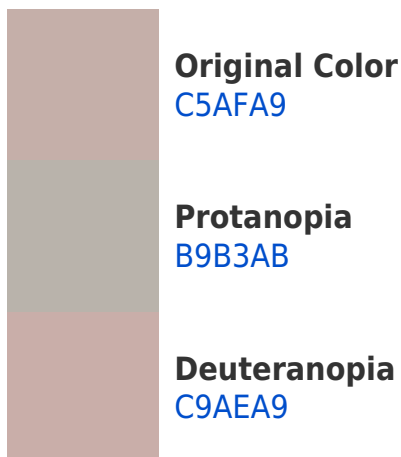


This preview shows how white text looks on a background with the Hex color C5AFA9.

Color Blindness Simulation

Color vision deficiency is a very complex topic, and I could not describe the different causes any better than Wikipedia does, so if you want to learn more, you should check out their [article about color blindness](#).

Dichromacy





Tritanopia
C7ACBA

Trichromacy



Original Color
C5AFA9

Protanomaly
BDB2AA

Deuteranomaly
C8AEA9

Tritanomaly
C6ADB4

Monochromacy



Original Color
C5AFA9

Achromatopsia
B5B5B5

Achromatomaly
BBB3B1

CSS Examples

Text

The CSS property to change the color of the text to Hex C5AFA9 is called "color". The color property can be set on classes, ids or directly on the HTML element.

This example shows how text in the color #C5AFA9 looks like.

```
.text, #text, p{  
    color:#C5AFA9  
}
```

If you want to add a text shadow in that color use the text-shadow property, you can generate a text shadow directly with our [CSS Text Shadow Generator](#).

Here you see how black text with a 4 pixel #C5AFA9 colored shadow looks like.

```
.shadow{ text-shadow: 4px 4px 2px #C5AFA9
}
```

Border

The CSS property to change the border of an element to Hex C5AFA9 is called "border". The border property can be set on classes, ids or directly on the HTML element.

This example shows the color as border, it can be applied via the CSS property "border" or "border-color".

```
.border, #border, table{ border:4px solid
#C5AFA9 }
```

If only the border color should be changed use the property `border-color`.

```
.border{ border-color:#C5AFA9 }
```

If you want to add a box shadow in that color use:

Here you see how a box with a 4 pixel #C5AFA9 colored shadow looks like.

```
.boxshadow{ -moz-box-shadow:4px 4px 4px  
4px #C5AFA9; -webkit-box-shadow:4px 4px  
4px 4px #C5AFA9; box-shadow:4px 4px 4px  
4px #C5AFA9 }
```

Background

The CSS property to change the background color of an element to Hex C5AFA9 is called "background". The background property can be set on classes, ids or directly on the HTML element.

```
.background, #background, body{  
background:#C5AFA9 }
```

If only the background color should be changed can be used:

```
.background{ background-color:#C5AFA9 }
```

This example shows the color as background, it is applied via the CSS property "background".

To optimize and compress your CSS code, you can use our [online CSS compressor and optimizer](#) based on csstidy. If you want to create a linear or radial gradient as background or border, check our [CSS Gradient Generator](#).

Hey! You found this booklet interesting? Support Converting Colors with the new Membership Option!

The pro membership hides all ads, plus gives you double the colors in the color bucket, and more awesome pro features!

[Learn more, Memberships starting at \\$2.50/m!](#)

**Follow me
on Twitter!**

@ConvertingColor