

# Converting Colors

Hex(C5B2C0)

Have a look what the booklet for  
Hex(C5B2C0) contains.

<b>Hex(C5B2C0)</b> .....	3
<b><i>Conversions</i></b> .....	4
<b><i>Details</i></b> .....	6
<b><i>Harmonies</i></b> .....	11
<b><i>Previews</i></b> .....	23
<b><i>Color Blindness Simulation</i></b> .....	26
<b><i>CSS Examples</i></b> .....	29

# **Color**

**Hex(C5B2C0)**

# Conversions

## Conversions Part 1

<b>Format</b>	<b>Color</b>
Hex	C5B2C0
RGB	197, 178, 192
RGB Percent	77%, 70%, 75%
CMY	0.2275, 0.3020, 0.2471
CMYK	0.00, 0.10, 0.03, 0.23
HSL	316°, 14%, 74%
HSV	316°, 10%, 77%
XYZ	48.4608, 47.5169, 56.4867
YIQ	185.2770, 6.8300, 8.3820

# Conversions

## Conversions Part 2

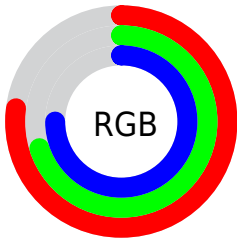
Format	Color
<a href="#">RYB</a>	<a href="#">197, 178, 192</a>
Decimal	<a href="#">12956352</a>
CIELab	<a href="#">74.52, 9.27, -4.64</a>
CIELCh	<a href="#">75, 10.368, 333.439</a>
Yxy	<a href="#">47.5169, 0.3178, 0.3117</a>
Android (android.graphics.Color)	<a href="#">4291146432</a> ( <a href="#">0xFFC5B2C0</a> )
YUV	<a href="#">185.2770, 3.3144, 10.2811</a>
Hunter-Lab	<a href="#">68.9325, 4.8569, -0.3324</a>

# Details

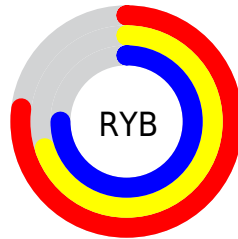
The Hex color **C5B2C0** is a light color, and the websafe version is hex **CCCCCC**. A complement of this color would be **B2C5B7**, and the grayscale version is **B9B9B9**.

A 20% lighter version of the original color is **FEEAF8**, and **8F7D8B** is the 20% darker color. If you saturate the color by 10%, you get **C59EBB**, and if you desaturate by 10%, it is **C5C6C5**.

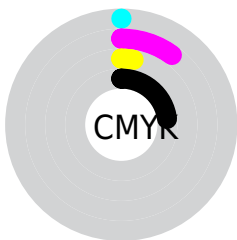
# Distribution



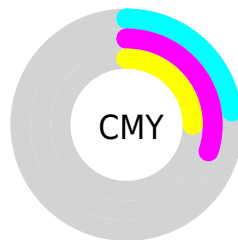
- Red (77%)
- Green (70%)
- Blue (75%)



- Red (77%)
- Yellow (70%)
- Blue (75%)



- Cyan (0%)
- Magenta (10%)
- Yellow (3%)
- Black (23%)



- Cyan (23%)
- Magenta (30%)
- Yellow (25%)

# Brightness & Saturation Gradients

These gradients show how the Hex color C5B2C0 changes by changing the brightness by 10 percent. The first figure shows a shift by +10% for each color and the second figure -10%.

Similar to the brightness gradients but the following saturation gradients show a change of the Hex color C5B2C0 by changing the saturation by 10% instead.



 C5B2C0

 C5B2C0

FFFFFF

 AA97A5

 FEEAF8

 8F7D8B

 766471

 5D4C59

 453641

 2F202B

 1B0A17

 000000

 C5B2C0

 C5B2C0

 C59EBB

 C5C6C5

 C58BB6

 C5D9CA

 C577B0

 C5EDD0

 C563AB

 C5FFD5

 C54FA6

 C5FFDA

 C53CA1

 C5FFDF

 C5289C

 C5FFE4

 C51497

 C5FFE9

 C50191

 C5FFEF

# Harmonies

## Analogous

The Analogous color harmony consists of three colors that are next to each other on the color wheel.



BBB5C7



C5B2C0



CBB1B6

# Triad

The Triadic color harmony groups three colors that are evenly spaced from another and form a triangle on the color wheel.



C5B2C0



BEB7A4



A0BDC1

# Complementary

The Complementary color scheme is a pair of colors which are on the opposite of each other on the color wheel.



C5B2C0



B2C5B7

# Split Complementary

Split-complementary colors differ from the complementary color scheme. The scheme consists of three colors, the original color and two neighbors of the complement color.



A1BDB8



C5B2C0



B3BAA7

# Square

The Square scheme is like the rectangle color scheme, but the four colors are evenly spaced on the color wheel.



C5B2C0



C7B4A7



A9BCAF



A5BBC8

# Rectangle

The Rectangle color scheme consists of four colors that form a rectangle on the color wheel.



C5B2C0



CCB1B0



A9BCAF



A0DBBE



# Sweetspot

The Sweet Spot groups the original color and five complimentary colors.



C5B2C0



FFF7FD



B7B2C5



807A7E



000000



808080



# Same Dimension

The Same Dimension uses a secret algorithm to generate beautiful new colors.



C5B2C0



FFE0F7



C5B2B7



635A61



A30078



24001A



# Inverse Universe

The Inverse Universe completely reimagines the original color for something new.



C5B2C0



FFE0F7



B2C5C0



635A61



A30078

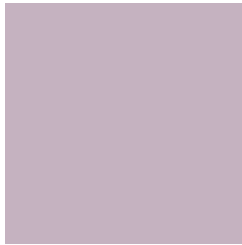


24001A



# Previews

## White Background



This preview shows how the Hex color C5B2C0 looks on a white background.

## Color Contrast Check

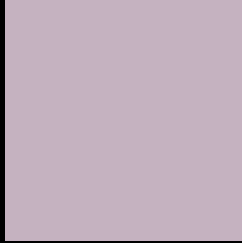
Large Text (above 18pt) WCAG AA × Fail

Any Text WCAG AA × Fail

Large Text (above 18pt) WCAG AAA × Fail

Any Text WCAG AAA × Fail

# Black Background



This preview shows how the Hex color C5B2C0 looks on a black background.

## Color Contrast Check

Large Text (above 18pt) WCAG AA ✓ Pass

Any Text WCAG AA ✓ Pass

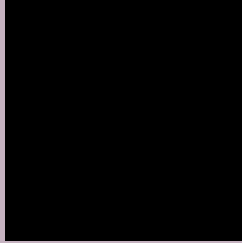
Large Text (above 18pt) WCAG AAA ✓ Pass

Any Text WCAG AAA ✓ Pass

If you want to check with other color combinations, try the [Color Contrast Checker](#).



## Hex C5B2C0 Background



This preview shows how black text looks on a background with the Hex color C5B2C0.



This preview shows how white text looks on a background with the Hex color C5B2C0.

# Color Blindness Simulation

Color vision deficiency is a very complex topic, and I could not describe the different causes any better than Wikipedia does, so if you want to learn more, you should check out their [article about color blindness](#).

## Dichromacy





**Tritanopia**  
C5B2C0

# Trichromacy



**Original Color**  
C5B2C0

**Protanomaly**  
BCB5C2

**Deuteranomaly**  
C5B2C0

**Tritanomaly**  
C5B2C0

# Monochromacy



**Original Color**  
C5B2C0

**Achromatopsia**  
B9B9B9

**Achromatomaly**  
BDB6BC

# CSS Examples

## Text

The CSS property to change the color of the text to Hex C5B2C0 is called "color". The color property can be set on classes, ids or directly on the HTML element.

This example shows how text in the color #C5B2C0 looks like.

```
.text, #text, p{  
    color:#C5B2C0  
}
```

If you want to add a text shadow in that color use the text-shadow property, you can generate a text shadow directly with our [CSS Text Shadow Generator](#).

Here you see how black text with a 4 pixel #C5B2C0 colored shadow looks like.

```
.shadow{ text-shadow: 4px 4px 2px #C5B2C0
}
```

## Border

The CSS property to change the border of an element to Hex C5B2C0 is called "border". The border property can be set on classes, ids or directly on the HTML element.

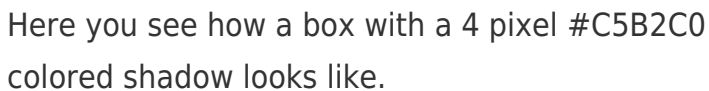
This example shows the color as border, it can be applied via the CSS property "border" or "border-color".

```
.border, #border, table{ border:4px solid
#C5B2C0 }
```

If only the border color should be changed use the property `border-color`.

```
.border{ border-color:#C5B2C0 }
```

If you want to add a box shadow in that color use:



Here you see how a box with a 4 pixel #C5B2C0 colored shadow looks like.

```
.boxshadow{ -moz-box-shadow:4px 4px 4px  
4px #C5B2C0; -webkit-box-shadow:4px 4px  
4px 4px #C5B2C0; box-shadow:4px 4px 4px  
4px #C5B2C0 }
```

# Background

The CSS property to change the background color of an element to Hex C5B2C0 is called "background". The background property can be set on classes, ids or directly on the HTML element.

```
.background, #background, body{  
background:#C5B2C0 }
```

If only the background color should be changed can be used:

```
.background{ background-color:#C5B2C0 }
```

This example shows the color as background, it is applied via the CSS property "background".

To optimize and compress your CSS code, you can use our [online CSS compressor and optimizer](#) based on csstidy. If you want to create a linear or radial gradient as background or border, check our [CSS Gradient Generator](#).



Hey! You found this booklet interesting? Support Converting Colors with the new Membership Option!

The pro membership hides all ads, plus gives you double the colors in the color bucket, and more awesome pro features!

**[Learn more, Memberships starting at \\$2.50/m!](#)**

**Follow me  
on Twitter!**

@ConvertingColor