

Converting Colors

Hex(C5B39E)

Have a look what the booklet for
Hex(C5B39E) contains.

Hex(C5B39E)	3
<i>Conversions</i>	4
<i>Details</i>	6
<i>Harmonies</i>	11
<i>Previews</i>	23
<i>Color Blindness Simulation</i>	26
<i>CSS Examples</i>	29

Color

Hex(C5B39E)

Conversions

Conversions Part 1

Format	Color
Hex	C5B39E
RGB	197, 179, 158
RGB Percent	77%, 70%, 62%
CMY	0.2275, 0.2980, 0.3804
CMYK	0.00, 0.09, 0.20, 0.23
HSL	32°, 25%, 70%
HSV	32°, 20%, 77%
XYZ	45.3176, 46.5791, 38.9499
YIQ	181.9880, 17.4690, -2.7150

Conversions

Conversions Part 2

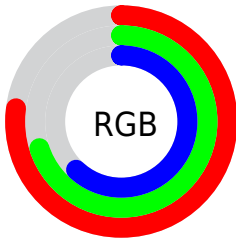
Format	Color
R_{YB}	191, 197, 158
Decimal	12956574
CIE _{Lab}	73.92, 3.03, 13.06
CIE _{LCh}	74, 13.405, 76.948
Yxy	46.5791, 0.3463, 0.3560
Android (android.graphics.Color)	4291146654 (0xFFC5B39E)
YUV	181.9880, -11.8261, 13.1655
Hunter-Lab	68.2489, -0.9107, 13.9372

Details

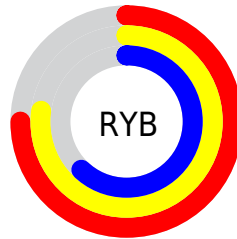
The Hex color **C5B39E** is a light color, and the websafe version is hex **CCCCCC**. A complement of this color would be **9EB0C5**, and the grayscale version is **B6B6B6**.

A 20% lighter version of the original color is **FEEBD5**, and **8F7E6B** is the 20% darker color. If you saturate the color by 10%, you get **C5AA8A**, and if you desaturate by 10%, it is **C5BCB2**.

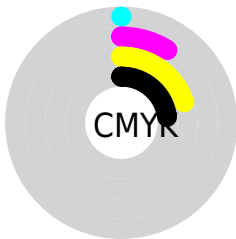
Distribution



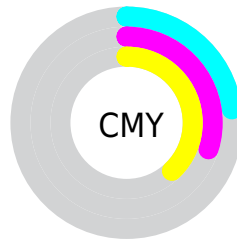
- Red (77%)
- Green (70%)
- Blue (62%)



- Red (75%)
- Yellow (77%)
- Blue (62%)



- Cyan (0%)
- Magenta (9%)
- Yellow (20%)
- Black (23%)



- Cyan (23%)
- Magenta (30%)
- Yellow (38%)

Brightness & Saturation Gradients

These gradients show how the Hex color C5B39E changes by changing the brightness by 10 percent. The first figure shows a shift by +10% for each color and the second figure -10%.

Similar to the brightness gradients but the following saturation gradients show a change of the Hex color C5B39E by changing the saturation by 10% instead.

 C5B39E

 C5B39E

FFFFFF

 AA9884

 FEEBD5

 8F7E6B

 FFFFFF1

 756552

 5C4D3B

 443725

 2D2111

 180B00

 000000

 C5B39E

 C5B39E

 C5AA8A

 C5BCB2

 C5A177

 C5C5C5

 C59863

 C5CED9

 C58F4F

 C5D7ED

 C5863C

 C5E0FF

 C57C28

 C5EAFF

 C57314

 C5F3FF

 C56A00

 C5FCFF

 C5FFFF

Harmonies

Analogous

The Analogous color harmony consists of three colors that are next to each other on the color wheel.



CEAFA4



C5B39E



B8B79E

Triad

The Triadic color harmony groups three colors that are evenly spaced from another and form a triangle on the color wheel.



C5B39E



97BDBC



C0B0C7

Complementary

The Complementary color scheme is a pair of colors which are on the opposite of each other on the color wheel.



C5B39E



9EB0C5

Split Complementary

Split-complementary colors differ from the complementary color scheme. The scheme consists of three colors, the original color and two neighbors of the complement color.



B1B4CD



C5B39E



98BBC7

Square

The Square scheme is like the rectangle color scheme, but the four colors are evenly spaced on the color wheel.



C5B39E



9EBDB0



A2B8CD



CCAEB3

Rectangle

The Rectangle color scheme consists of four colors that form a rectangle on the color wheel.



C5B39E



AFB9A2



A2B8CD



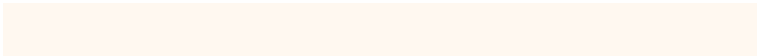
BCB2C9

Sweetspot

The Sweet Spot groups the original color and five complimentary colors.



C5B39E



FFF8F0



C59EB0



807B77



000000



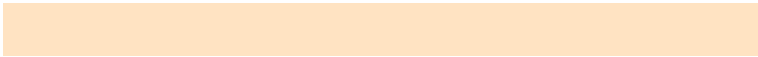
808080

Same Dimension

The Same Dimension uses a secret algorithm to generate beautiful new colors.



C5B39E



FFE3C2



C4C59E



635F5A



A35800



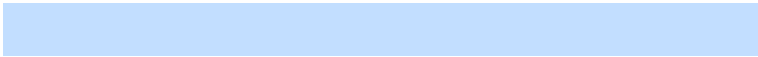
241300

Inverse Universe

The Inverse Universe completely reimagines the original color for something new.



9EB0C5



C2DEFF



9F9EC5



5A5E63



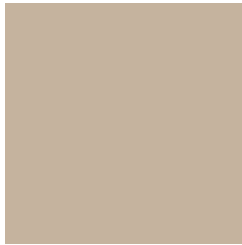
004BA3



001024

Previews

White Background



This preview shows how the Hex color C5B39E looks on a white background.

Color Contrast Check

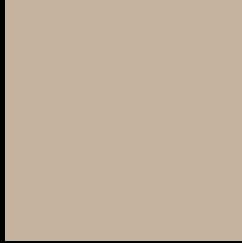
Large Text (above 18pt) WCAG AA × Fail

Any Text WCAG AA × Fail

Large Text (above 18pt) WCAG AAA × Fail

Any Text WCAG AAA × Fail

Black Background



This preview shows how the Hex color C5B39E looks on a black background.

Color Contrast Check

Large Text (above 18pt) WCAG AA ✓ Pass

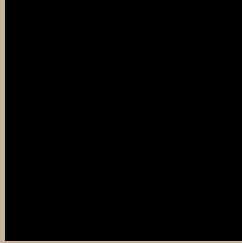
Any Text WCAG AA ✓ Pass

Large Text (above 18pt) WCAG AAA ✓ Pass

Any Text WCAG AAA ✓ Pass

If you want to check with other color combinations, try the [Color Contrast Checker](#).

Hex C5B39E Background



This preview shows how black text looks on a background with the Hex color C5B39E.

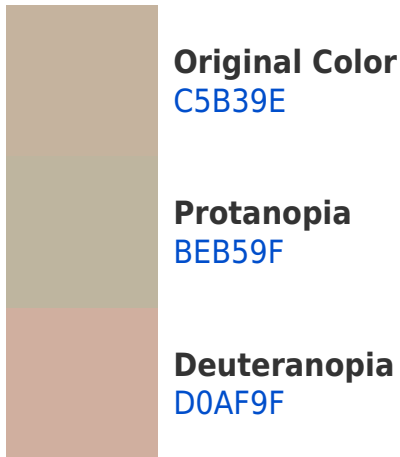


This preview shows how white text looks on a background with the Hex color C5B39E.

Color Blindness Simulation

Color vision deficiency is a very complex topic, and I could not describe the different causes any better than Wikipedia does, so if you want to learn more, you should check out their [article about color blindness](#).

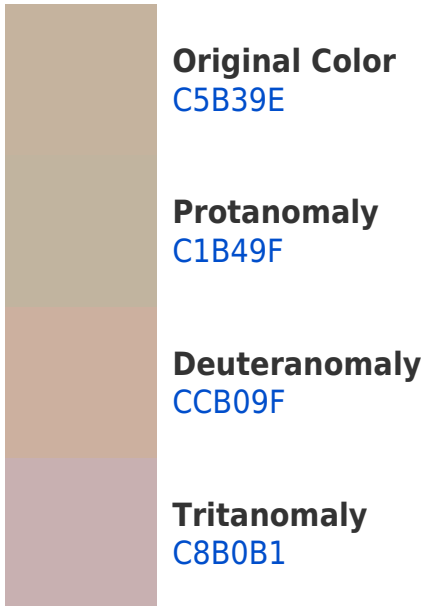
Dichromacy



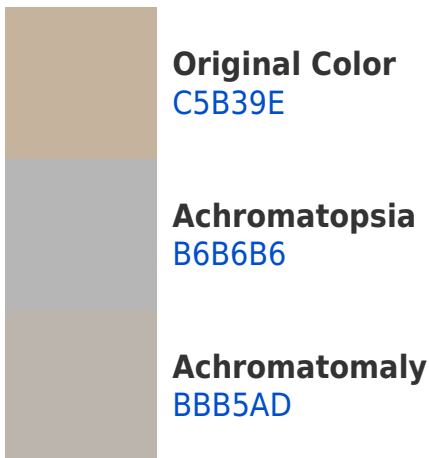


Tritanopia
C9AFBC

Trichromacy



Monochromacy



CSS Examples

Text

The CSS property to change the color of the text to Hex C5B39E is called "color". The color property can be set on classes, ids or directly on the HTML element.

This example shows how text in the color #C5B39E looks like.

```
.text, #text, p{  
    color:#C5B39E  
}
```

If you want to add a text shadow in that color use the text-shadow property, you can generate a text shadow directly with our [CSS Text Shadow Generator](#).

Here you see how black text with a 4 pixel #C5B39E colored shadow looks like.

```
.shadow{ text-shadow: 4px 4px 2px #C5B39E
}
```

Border

The CSS property to change the border of an element to Hex C5B39E is called "border". The border property can be set on classes, ids or directly on the HTML element.

This example shows the color as border, it can be applied via the CSS property "border" or "border-color".

```
.border, #border, table{ border:4px solid
#C5B39E }
```

If only the border color should be changed use the property `border-color`.

```
.border{ border-color:#C5B39E }
```

If you want to add a box shadow in that color use:

Here you see how a box with a 4 pixel #C5B39E colored shadow looks like.

```
.boxshadow{ -moz-box-shadow:4px 4px 4px  
4px #C5B39E; -webkit-box-shadow:4px 4px  
4px 4px #C5B39E; box-shadow:4px 4px 4px  
4px #C5B39E }
```

Background

The CSS property to change the background color of an element to Hex C5B39E is called "background". The background property can be set on classes, ids or directly on the HTML element.

```
.background, #background, body{  
background:#C5B39E }
```

If only the background color should be changed can be used:

```
.background{ background-color:#C5B39E }
```

This example shows the color as background, it is applied via the CSS property "background".

To optimize and compress your CSS code, you can use our [online CSS compressor and optimizer](#) based on csstidy. If you want to create a linear or radial gradient as background or border, check our [CSS Gradient Generator](#).

Hey! You found this booklet interesting? Support Converting Colors with the new Membership Option!

The pro membership hides all ads, plus gives you double the colors in the color bucket, and more awesome pro features!

[Learn more, Memberships starting at \\$2.50/m!](#)

**Follow me
on Twitter!**

@ConvertingColor