

Converting Colors

Hex(C5B3B5)

Have a look what the booklet for
Hex(C5B3B5) contains.

Hex(C5B3B5)	3
<i>Conversions</i>	4
<i>Details</i>	6
<i>Harmonies</i>	11
<i>Previews</i>	23
<i>Color Blindness Simulation</i>	26
<i>CSS Examples</i>	29

Color

Hex(C5B3B5)

Conversions

Conversions Part 1

Format	Color
Hex	C5B3B5
RGB	197, 179, 181
RGB Percent	77%, 70%, 71%
CMY	0.2275, 0.2980, 0.2902
CMYK	0.00, 0.09, 0.08, 0.23
HSL	353°, 13%, 74%
HSV	353°, 9%, 77%
XYZ	47.4865, 47.4467, 50.3714
YIQ	184.6100, 10.0860, 4.4380

Conversions

Conversions Part 2

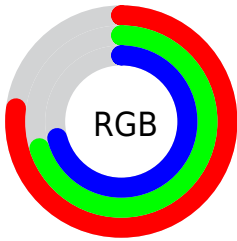
Format	Color
RYB	197, 179, 181
Decimal	12956597
CIELab	74.47, 6.77, 1.31
CIELCh	74, 6.896, 10.945
Yxy	47.4467, 0.3268, 0.3265
Android (android.graphics.Color)	4291146677 (0xFFC5B3B5)
YUV	184.6100, -1.7797, 10.8660
Hunter-Lab	68.8816, 2.5141, 4.8598

Details

The Hex color **C5B3B5** is a light color, and the websafe version is hex **CCCCCC**. A complement of this color would be **B3C5C3**, and the grayscale version is **B9B9B9**.

A 20% lighter version of the original color is **FEEBED**, and **8F7E80** is the 20% darker color. If you saturate the color by 10%, you get **C59FA3**, and if you desaturate by 10%, it is **C5C7C7**.

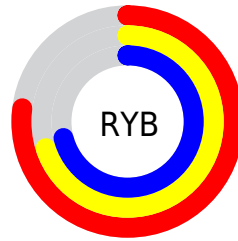
Distribution



Red (77%)

Green (70%)

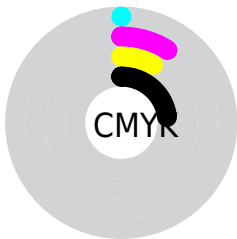
Blue (71%)



Red (77%)

Yellow (70%)

Blue (71%)

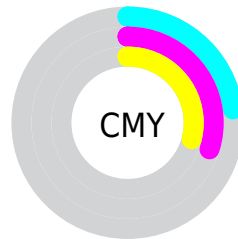


Cyan (0%)

Magenta (9%)

Yellow (8%)

Black (23%)



Cyan (23%)

Magenta (30%)

Yellow (29%)

Brightness & Saturation Gradients

These gradients show how the Hex color C5B3B5 changes by changing the brightness by 10 percent. The first figure shows a shift by +10% for each color and the second figure -10%.

Similar to the brightness gradients but the following saturation gradients show a change of the Hex color C5B3B5 by changing the saturation by 10% instead.

 C5B3B5

 C5B3B5

FFFFFF

 AA989A

 FEEBED

 8F7E80

 756567

 5D4D4F

 453738

 2F2123

 1B0B0D

 000000

 C5B3B5

 C5B3B5

 C59FA3

 C5C7C7

 C58C92

 C5DAD8

 C57880

 C5EEEE

 C5646F

 C5FFFB

 C5505D

 C5FFFF

 C53D4C

 C5293A

 C51529

 C50217

Harmonies

Analogous

The Analogous color harmony consists of three colors that are next to each other on the color wheel.



C2B3BB



C5B3B5



C5B4AF

Triad

The Triadic color harmony groups three colors that are evenly spaced from another and form a triangle on the color wheel.



C5B3B5



B3B9AE



ADB9C3

Complementary

The Complementary color scheme is a pair of colors which are on the opposite of each other on the color wheel.



C5B3B5



B3C5C3

Split Complementary

Split-complementary colors differ from the complementary color scheme. The scheme consists of three colors, the original color and two neighbors of the complement color.



A8BABF



C5B3B5



ACBBB3

Square

The Square scheme is like the rectangle color scheme, but the four colors are evenly spaced on the color wheel.



C5B3B5



BAB7AB



A8BBB9



B4B7C4

Rectangle

The Rectangle color scheme consists of four colors that form a rectangle on the color wheel.



C5B3B5



C2B5AC



A8BBB9



ABBAC2

Sweetspot

The Sweet Spot groups the original color and five complimentary colors.



C5B3B5



FFF7F8



C3B3C5



807A7B



000000



808080

Same Dimension

The Same Dimension uses a secret algorithm to generate beautiful new colors.



C5B3B5



FFE3E6



C5BAB3



635A5B



A30012



240004

Inverse Universe

The Inverse Universe completely reimagines the original color for something new.



C5B3B5



FFE3E6



B3BEC5



635A5B



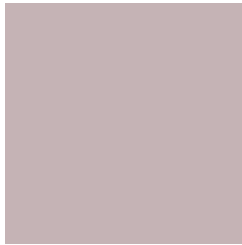
A30012



240004

Previews

White Background



This preview shows how the Hex color C5B3B5 looks on a white background.

Color Contrast Check

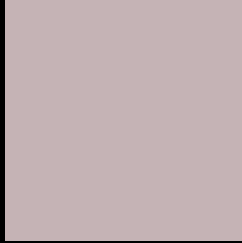
Large Text (above 18pt) WCAG AA × Fail

Any Text WCAG AA × Fail

Large Text (above 18pt) WCAG AAA × Fail

Any Text WCAG AAA × Fail

Black Background



This preview shows how the Hex color C5B3B5 looks on a black background.

Color Contrast Check

Large Text (above 18pt) WCAG AA ✓ Pass

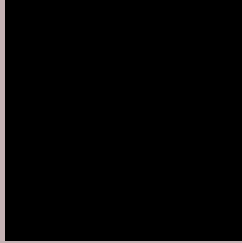
Any Text WCAG AA ✓ Pass

Large Text (above 18pt) WCAG AAA ✓ Pass

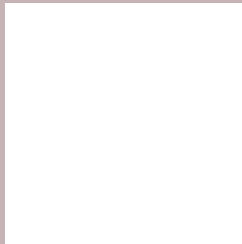
Any Text WCAG AAA ✓ Pass

If you want to check with other color combinations, try the [Color Contrast Checker](#).

Hex C5B3B5 Background



This preview shows how black text looks on a background with the Hex color C5B3B5.

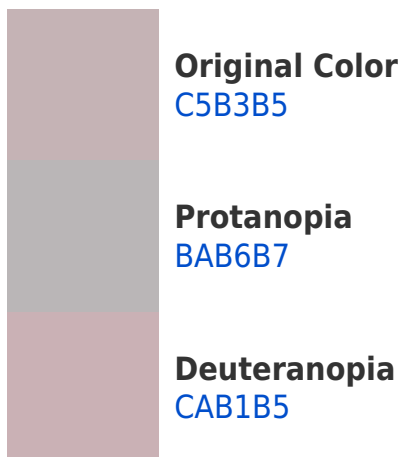


This preview shows how white text looks on a background with the Hex color C5B3B5.

Color Blindness Simulation

Color vision deficiency is a very complex topic, and I could not describe the different causes any better than Wikipedia does, so if you want to learn more, you should check out their [article about color blindness](#).

Dichromacy





Tritanopia
C6B1BF

Trichromacy



Original Color
C5B3B5

Protanomaly
BEB5B6

Deuteranomaly
C8B2B5

Tritanomaly
C6B2BB

Monochromacy



Original Color
C5B3B5

Achromatopsia
B9B9B9

Achromatomaly
BDB7B8

CSS Examples

Text

The CSS property to change the color of the text to Hex C5B3B5 is called "color". The color property can be set on classes, ids or directly on the HTML element.

This example shows how text in the color #C5B3B5 looks like.

```
.text, #text, p{  
    color:#C5B3B5  
}
```

If you want to add a text shadow in that color use the text-shadow property, you can generate a text shadow directly with our [CSS Text Shadow Generator](#).

Here you see how black text with a 4 pixel #C5B3B5 colored shadow looks like.

```
.shadow{ text-shadow: 4px 4px 2px #C5B3B5
}
```

Border

The CSS property to change the border of an element to Hex C5B3B5 is called "border". The border property can be set on classes, ids or directly on the HTML element.

This example shows the color as border, it can be applied via the CSS property "border" or "border-color".

```
.border, #border, table{ border:4px solid
#C5B3B5 }
```

If only the border color should be changed use the property `border-color`.

```
.border{ border-color:#C5B3B5 }
```

If you want to add a box shadow in that color use:

Here you see how a box with a 4 pixel #C5B3B5 colored shadow looks like.

```
.boxshadow{ -moz-box-shadow:4px 4px 4px  
4px #C5B3B5; -webkit-box-shadow:4px 4px  
4px 4px #C5B3B5; box-shadow:4px 4px 4px  
4px #C5B3B5 }
```

Background

The CSS property to change the background color of an element to Hex C5B3B5 is called "background". The background property can be set on classes, ids or directly on the HTML element.

```
.background, #background, body{  
background:#C5B3B5 }
```

If only the background color should be changed can be used:

```
.background{ background-color:#C5B3B5 }
```

This example shows the color as background, it is applied via the CSS property "background".

To optimize and compress your CSS code, you can use our [online CSS compressor and optimizer](#) based on csstidy. If you want to create a linear or radial gradient as background or border, check our [CSS Gradient Generator](#).

Hey! You found this booklet interesting? Support Converting Colors with the new Membership Option!

The pro membership hides all ads, plus gives you double the colors in the color bucket, and more awesome pro features!

[Learn more, Memberships starting at \\$2.50/m!](#)

**Follow me
on Twitter!**

@ConvertingColor