

# Converting Colors

Hex(C5B5B1)

Have a look what the booklet for  
Hex(C5B5B1) contains.

<b>Hex(C5B5B1)</b> .....	3
<i><b>Conversions</b></i> .....	4
<i><b>Details</b></i> .....	6
<i><b>Harmonies</b></i> .....	11
<i><b>Previews</b></i> .....	23
<i><b>Color Blindness Simulation</b></i> .....	26
<i><b>CSS Examples</b></i> .....	29

# **Color**

**Hex(C5B5B1)**

# Conversions

## Conversions Part 1

Format	Color
Hex	C5B5B1
RGB	197, 181, 177
RGB Percent	77%, 71%, 69%
CMY	0.2275, 0.2902, 0.3059
CMYK	0.00, 0.08, 0.10, 0.23
HSL	12°, 15%, 73%
HSV	12°, 10%, 77%
XYZ	47.4856, 48.0924, 48.3750
YIQ	185.3280, 10.8200, 2.1480

# Conversions

## Conversions Part 2

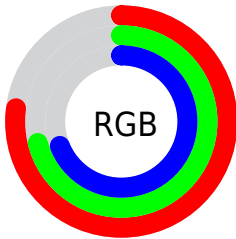
<b>Format</b>	<b>Color</b>
<a href="#">RYB</a>	<a href="#">197, 182, 177</a>
Decimal	<a href="#">12957105</a>
CIELab	<a href="#">74.88, 5.01, 4.08</a>
CIELCh	<a href="#">75, 6.462, 39.209</a>
Yxy	<a href="#">48.0924, 0.3299, 0.3341</a>
Android (android.graphics.Color)	<a href="#">4291147185</a> ( <a href="#">0xFFC5B5B1</a> )
YUV	<a href="#">185.3280, -4.1057, 10.2363</a>
Hunter-Lab	<a href="#">69.3487, 0.8655, 7.1856</a>

# Details

The Hex color **C5B5B1** is a light color, and the websafe version is hex **CCCCCC**. A complement of this color would be **B1C1C5**, and the grayscale version is **B9B9B9**.

A 20% lighter version of the original color is **FEEDE9**, and **8F807C** is the 20% darker color. If you saturate the color by 10%, you get **C5A59D**, and if you desaturate by 10%, it is **C5C5C5**.

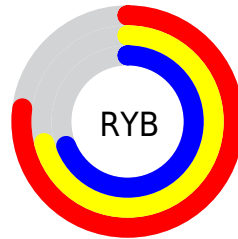
# Distribution



Red (77%)

Green (71%)

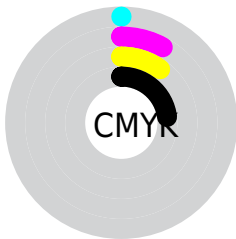
Blue (69%)



Red (77%)

Yellow (71%)

Blue (69%)

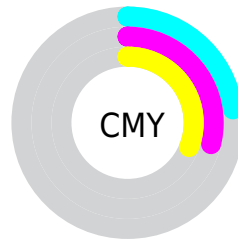


Cyan (0%)

Magenta (8%)

Yellow (10%)

Black (23%)



Cyan (23%)

Magenta (29%)

Yellow (31%)

# Brightness & Saturation Gradients

These gradients show how the Hex color C5B5B1 changes by changing the brightness by 10 percent. The first figure shows a shift by +10% for each color and the second figure -10%.

Similar to the brightness gradients but the following saturation gradients show a change of the Hex color C5B5B1 by changing the saturation by 10% instead.



 C5B5B1

 C5B5B1

FFFFFF

 AA9A96

 FEEDE9

 8F807C

 756764

 5D4F4C

 453835

 2E2320

 1B0D08

 000000

 C5B5B1

 C5B5B1

 C5A59D

 C5C5C5

 C5958A

 C5D5D8

 C58676

 C5E4EC

 C57662

 C5F4FF

 C5664F

 C5FFFF

 C5563B

 C54727

 C53713

 C52700

# Harmonies

## Analogous

The Analogous color harmony consists of three colors that are next to each other on the color wheel.



C5B4B7



C5B5B1



C1B7AD

# Triad

The Triadic color harmony groups three colors that are evenly spaced from another and form a triangle on the color wheel.



C5B5B1



AEBCB4



B5B8C4

# Complementary

The Complementary color scheme is a pair of colors which are on the opposite of each other on the color wheel.



C5B5B1



B1C1C5

# Split Complementary

Split-complementary colors differ from the complementary color scheme. The scheme consists of three colors, the original color and two neighbors of the complement color.



AEBAC3



C5B5B1



AABCBA

# Square

The Square scheme is like the rectangle color scheme, but the four colors are evenly spaced on the color wheel.



C5B5B1



B5BAAF



AABBC0



BCB6C2

# Rectangle

The Rectangle color scheme consists of four colors that form a rectangle on the color wheel.



C5B5B1



BEB8AC



AABBC0



B2B9C4

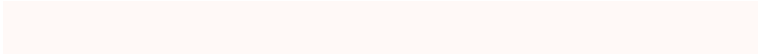


# Sweetspot

The Sweet Spot groups the original color and five complimentary colors.



C5B5B1



FFF9F7



C5B1C1



807B7A



000000



808080

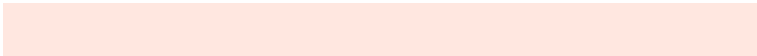


# Same Dimension

The Same Dimension uses a secret algorithm to generate beautiful new colors.



C5B5B1



FFE7E0



C5BFB1



635B5A



A32100



240700

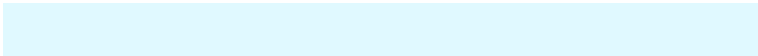


# Inverse Universe

The Inverse Universe completely reimagines the original color for something new.



B1C1C5



E0F9FF



B1B7C5



5A6163



0083A3



001D24



# Previews

## White Background



This preview shows how the Hex color C5B5B1 looks on a white background.

## Color Contrast Check

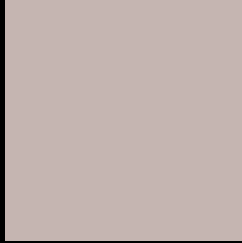
Large Text (above 18pt) WCAG AA × Fail

Any Text WCAG AA × Fail

Large Text (above 18pt) WCAG AAA × Fail

Any Text WCAG AAA × Fail

# Black Background



This preview shows how the Hex color C5B5B1 looks on a black background.

## Color Contrast Check

Large Text (above 18pt) WCAG AA ✓ Pass

Any Text WCAG AA ✓ Pass

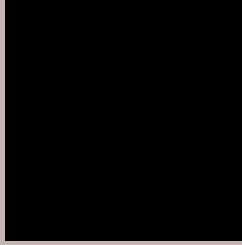
Large Text (above 18pt) WCAG AAA ✓ Pass

Any Text WCAG AAA ✓ Pass

If you want to check with other color combinations, try the [Color Contrast Checker](#).



## Hex C5B5B1 Background



This preview shows how black text looks on a background with the Hex color C5B5B1.



This preview shows how white text looks on a background with the Hex color C5B5B1.

# Color Blindness Simulation

Color vision deficiency is a very complex topic, and I could not describe the different causes any better than Wikipedia does, so if you want to learn more, you should check out their [article about color blindness](#).

## Dichromacy





**Tritanopia**  
C7B3C1

# Trichromacy



**Original Color**  
C5B5B1

**Protanomaly**  
C0B7B2

**Deuteranomaly**  
CAB3B2

**Tritanomaly**  
C6B4BB

# Monochromacy



**Original Color**  
C5B5B1

**Achromatopsia**  
B9B9B9

**Achromatomaly**  
BDB8B6

# CSS Examples

## Text

The CSS property to change the color of the text to Hex C5B5B1 is called "color". The color property can be set on classes, ids or directly on the HTML element.

This example shows how text in the color #C5B5B1 looks like.

```
.text, #text, p{  
    color:#C5B5B1  
}
```

If you want to add a text shadow in that color use the text-shadow property, you can generate a text shadow directly with our [CSS Text Shadow Generator](#).

Here you see how black text with a 4 pixel #C5B5B1 colored shadow looks like.

```
.shadow{ text-shadow: 4px 4px 2px #C5B5B1  
}
```

## Border

The CSS property to change the border of an element to Hex C5B5B1 is called "border". The border property can be set on classes, ids or directly on the HTML element.

This example shows the color as border, it can be applied via the CSS property "border" or "border-color".

```
.border, #border, table{ border:4px solid  
#C5B5B1 }
```

If only the border color should be changed use the property `border-color`.

```
.border{ border-color:#C5B5B1 }
```

If you want to add a box shadow in that color use:

Here you see how a box with a 4 pixel #C5B5B1 colored shadow looks like.

```
.boxshadow{ -moz-box-shadow:4px 4px 4px  
4px #C5B5B1; -webkit-box-shadow:4px 4px  
4px 4px #C5B5B1; box-shadow:4px 4px 4px  
4px #C5B5B1 }
```

# Background

The CSS property to change the background color of an element to Hex C5B5B1 is called "background". The background property can be set on classes, ids or directly on the HTML element.

```
.background, #background, body{  
background:#C5B5B1 }
```

If only the background color should be changed can be used:

```
.background{ background-color:#C5B5B1 }
```

This example shows the color as background, it is applied via the CSS property "background".

To optimize and compress your CSS code, you can use our [online CSS compressor and optimizer](#) based on csstidy. If you want to create a linear or radial gradient as background or border, check our [CSS Gradient Generator](#).



Hey! You found this booklet interesting? Support Converting Colors with the new Membership Option!

The pro membership hides all ads, plus gives you double the colors in the color bucket, and more awesome pro features!

**[Learn more, Memberships starting at \\$2.50/m!](#)**

**Follow me  
on Twitter!**

@ConvertingColor