

Converting Colors

Hex(C5B7BE)

Have a look what the booklet for
Hex(C5B7BE) contains.

Hex(C5B7BE)	3
<i>Conversions</i>	4
<i>Details</i>	6
<i>Harmonies</i>	11
<i>Previews</i>	23
<i>Color Blindness Simulation</i>	26
<i>CSS Examples</i>	29

Color

Hex(C5B7BE)

Conversions

Conversions Part 1

Format	Color
Hex	C5B7BE
RGB	197, 183, 190
RGB Percent	77%, 72%, 75%
CMY	0.2275, 0.2824, 0.2549
CMYK	0.00, 0.07, 0.04, 0.23
HSL	330°, 11%, 75%
HSV	330°, 7%, 77%
XYZ	49.2537, 49.4550, 55.6650
YIQ	187.9840, 6.0970, 5.1450

Conversions

Conversions Part 2

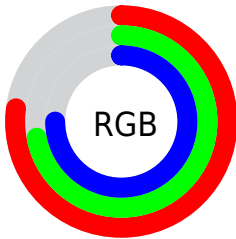
Format	Color
RYB	197, 183, 190
Decimal	12957630
CIELab	75.73, 6.21, -1.76
CIELCh	76, 6.451, 344.173
Yxy	49.4550, 0.3191, 0.3204
Android (android.graphics.Color)	4291147710 (0xFFC5B7BE)
YUV	187.9840, 0.9939, 7.9070
Hunter-Lab	70.3242, 1.9504, 2.2961

Details

The Hex color **C5B7BE** is a light color, and the websafe version is hex **CCCCCC**. A complement of this color would be **B7C5BE**, and the grayscale version is **BCBCBC**.

A 20% lighter version of the original color is **FEEFF6**, and **8F8289** is the 20% darker color. If you saturate the color by 10%, you get **C5A3B4**, and if you desaturate by 10%, it is **C5CBC8**.

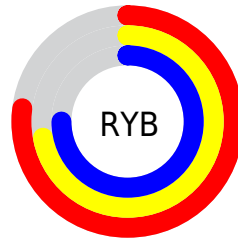
Distribution



Red (77%)

Green (72%)

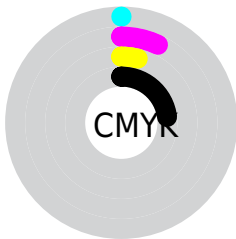
Blue (75%)



Red (77%)

Yellow (72%)

Blue (75%)

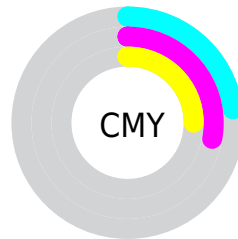


Cyan (0%)

Magenta (7%)

Yellow (4%)

Black (23%)



Cyan (23%)

Magenta (28%)

Yellow (25%)

Brightness & Saturation Gradients

These gradients show how the Hex color C5B7BE changes by changing the brightness by 10 percent. The first figure shows a shift by +10% for each color and the second figure -10%.

Similar to the brightness gradients but the following saturation gradients show a change of the Hex color C5B7BE by changing the saturation by 10% instead.

 C5B7BE

FFFFFF

 FEEFF6

 C5B7BE

 AA9CA3

 8F8289

 76696F

 5D5157

 453A40

 2F242A

 1B0F15

 000000

 C5B7BE

 C5B7BE

 C5A3B4

 C5CBC8

 C590AA

 C5DED2

 C57CA0

 C5F2DC

 C56897

 C5FFE5

 C5558D

 C5FFEF

 C54183

 C5FFF9

 C52D79

 C5FFFF

 C5196F

 C50665

Harmonies

Analogous

The Analogous color harmony consists of three colors that are next to each other on the color wheel.



BFB8C3



C5B7BE



C8B7B8

Triad

The Triadic color harmony groups three colors that are evenly spaced from another and form a triangle on the color wheel.



C5B7BE



BDBBAF



ADBEC3

Complementary

The Complementary color scheme is a pair of colors which are on the opposite of each other on the color wheel.



C5B7BE



B7C5BE

Split Complementary

Split-complementary colors differ from the complementary color scheme. The scheme consists of three colors, the original color and two neighbors of the complement color.



ADBEBD



C5B7BE



B6DBB2

Square

The Square scheme is like the rectangle color scheme, but the four colors are evenly spaced on the color wheel.



C5B7BE



C3B9AF



B0BEB7



B1BCC6

Rectangle

The Rectangle color scheme consists of four colors that form a rectangle on the color wheel.



C5B7BE



C8B7B4



B0BEB7



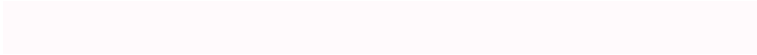
ACBEC1

Sweetspot

The Sweet Spot groups the original color and five complimentary colors.



C5B7BE



FFFAFC



BEB7C5



807D7E



000000



808080

Same Dimension

The Same Dimension uses a secret algorithm to generate beautiful new colors.



C5B7BE



FFE8F4



C5B7B7



635A5E



A30052



240012

Inverse Universe

The Inverse Universe completely reimagines the original color for something new.



C5B7BE



FFE8F4



B7C5C5



635A5E



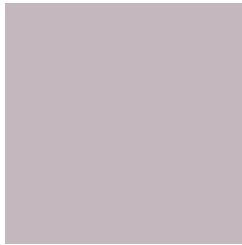
A30052



240012

Previews

White Background



This preview shows how the Hex color C5B7BE looks on a white background.

Color Contrast Check

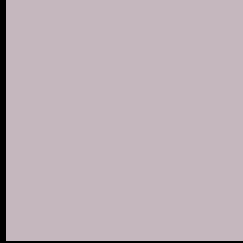
Large Text (above 18pt) WCAG AA × Fail

Any Text WCAG AA × Fail

Large Text (above 18pt) WCAG AAA × Fail

Any Text WCAG AAA × Fail

Black Background



This preview shows how the Hex color C5B7BE looks on a black background.

Color Contrast Check

Large Text (above 18pt) WCAG AA ✓ Pass

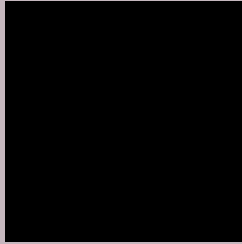
Any Text WCAG AA ✓ Pass

Large Text (above 18pt) WCAG AAA ✓ Pass

Any Text WCAG AAA ✓ Pass

If you want to check with other color combinations, try the [Color Contrast Checker](#).

Hex C5B7BE Background



This preview shows how black text looks on a background with the Hex color C5B7BE.

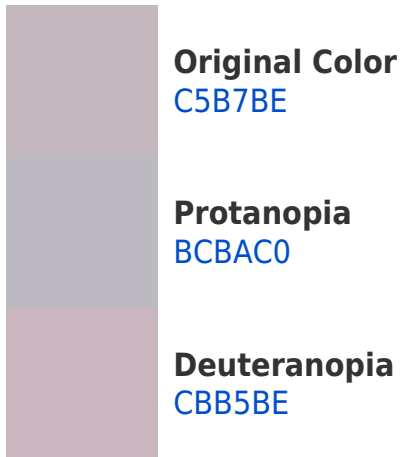


This preview shows how white text looks on a background with the Hex color C5B7BE.

Color Blindness Simulation

Color vision deficiency is a very complex topic, and I could not describe the different causes any better than Wikipedia does, so if you want to learn more, you should check out their [article about color blindness](#).

Dichromacy





Tritanopia
C6B6C4

Trichromacy



Original Color
C5B7BE

Protanomaly
BFB9BF

Deuteranomaly
C9B6BE

Tritanomaly
C6B6C2

Monochromacy



Original Color
C5B7BE

Achromatopsia
BCBCBC

Achromatomaly
BFBABD

CSS Examples

Text

The CSS property to change the color of the text to Hex C5B7BE is called "color". The color property can be set on classes, ids or directly on the HTML element.

This example shows how text in the color #C5B7BE looks like.

```
.text, #text, p{  
    color:#C5B7BE  
}
```

If you want to add a text shadow in that color use the text-shadow property, you can generate a text shadow directly with our [CSS Text Shadow Generator](#).

Here you see how black text with a 4 pixel #C5B7BE colored shadow looks like.

```
.shadow{ text-shadow: 4px 4px 2px #C5B7BE
}
```

Border

The CSS property to change the border of an element to Hex C5B7BE is called "border". The border property can be set on classes, ids or directly on the HTML element.

This example shows the color as border, it can be applied via the CSS property "border" or "border-color".

```
.border, #border, table{ border:4px solid
#C5B7BE }
```

If only the border color should be changed use the property `border-color`.

```
.border{ border-color:#C5B7BE }
```

If you want to add a box shadow in that color use:

Here you see how a box with a 4 pixel #C5B7BE colored shadow looks like.

```
.boxshadow{ -moz-box-shadow:4px 4px 4px  
4px #C5B7BE; -webkit-box-shadow:4px 4px  
4px 4px #C5B7BE; box-shadow:4px 4px 4px  
4px #C5B7BE }
```

Background

The CSS property to change the background color of an element to Hex C5B7BE is called "background". The background property can be set on classes, ids or directly on the HTML element.

```
.background, #background, body{  
background:#C5B7BE }
```

If only the background color should be changed can be used:

```
.background{ background-color:#C5B7BE }
```

This example shows the color as background, it is applied via the CSS property "background".

To optimize and compress your CSS code, you can use our [online CSS compressor and optimizer](#) based on csstidy. If you want to create a linear or radial gradient as background or border, check our [CSS Gradient Generator](#).

Hey! You found this booklet interesting? Support Converting Colors with the new Membership Option!

The pro membership hides all ads, plus gives you double the colors in the color bucket, and more awesome pro features!

[Learn more, Memberships starting at \\$2.50/m!](#)

**Follow me
on Twitter!**

@ConvertingColor