

# Converting Colors

Hex(C67D7D)

Have a look what the booklet for  
Hex(C67D7D) contains.

|  |    |
|--|----|
| <b>Hex(C67D7D)</b> .....                       | 3  |
| <b><i>Conversions</i></b> .....                | 4  |
| <b><i>Details</i></b> .....                    | 6  |
| <b><i>Harmonies</i></b> .....                  | 11 |
| <b><i>Previews</i></b> .....                   | 23 |
| <b><i>Color Blindness Simulation</i></b> ..... | 26 |
| <b><i>CSS Examples</i></b> .....               | 29 |

# Color

**Hex(C67D7D)**

# Conversions

## Conversions Part 1

| <b>Format</b> | <b>Color</b>               |
|---------------|----------------------------|
| Hex           | C67D7D                     |
| RGB           | 198, 125, 125              |
| RGB Percent   | 78%, 49%, 49%              |
| CMY           | 0.2235, 0.5098, 0.5098     |
| CMYK          | 0.00, 0.37, 0.37, 0.22     |
| HSL           | 0°, 39%, 63%               |
| HSV           | 0°, 37%, 78%               |
| XYZ           | 34.3240, 28.1537, 23.0272  |
| YIQ           | 146.8270, 43.5080, 15.4760 |

# Conversions

## Conversions Part 2

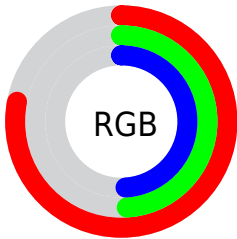
| <b>Format</b>                       | <b>Color</b>                   |
|-------------------------------------|--------------------------------|
| <b>R<sub>YB</sub></b>               | 198, 125, 125                  |
| Decimal                             | 13008253                       |
| CIE <sub>Lab</sub>                  | 60.03, 28.36, 11.92            |
| CIE <sub>LCh</sub>                  | 60, 30.761, 22.806             |
| Yxy                                 | 28.1537, 0.4014,<br>0.3293     |
| Android<br>(android.graphics.Color) | 4291198333<br>(0xFFC67D7D)     |
| YUV                                 | 146.8270, -10.7607,<br>44.8787 |
| Hunter-Lab                          | 53.0600, 22.6148,<br>11.4112   |

# Details

The Hex color **C67D7D** is a dark color, and the websafe version is hex **CC9999**. A complement of this color would be **7DC6C6**, and the grayscale version is **939393**.

A 20% lighter version of the original color is **FFB2B2**, and **8E4B4C** is the 20% darker color. If you saturate the color by 10%, you get **C66969**, and if you desaturate by 10%, it is **C69191**.

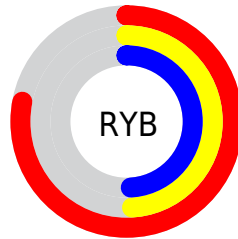
# Distribution



Red (78%)

Green (49%)

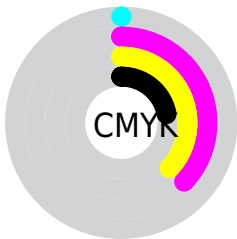
Blue (49%)



Red (78%)

Yellow (49%)

Blue (49%)

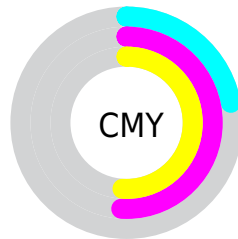


Cyan (0%)

Magenta (37%)

Yellow (37%)

Black (22%)



Cyan (22%)

Magenta (51%)

Yellow (51%)

# Brightness & Saturation Gradients

These gradients show how the Hex color C67D7D changes by changing the brightness by 10 percent. The first figure shows a shift by +10% for each color and the second figure -10%.

Similar to the brightness gradients but the following saturation gradients show a change of the Hex color C67D7D by changing the saturation by 10% instead.



 C67D7D

 C67D7D

FFFFFF

 AA6364

 FF2B2

 8E4B4C

 FFCECD

 733336

 FFEBE9

 581B20

 3F0309

 290001

 000000

 C67D7D

 C67D7D

 C66969

 C69191

 C65555

 C6A5A5

 C64242

 C6B8B8

 C62E2E

 C6CCCC

 C61A1A

 C6E0E0

 C60606

 C6F4F4

 C60000

 C6FFFF

# Harmonies

## Analogous

The Analogous color harmony consists of three colors that are next to each other on the color wheel.



C17D98



C67D7D



BD8467

# Triad

The Triadic color harmony groups three colors that are evenly spaced from another and form a triangle on the color wheel.



C67D7D



6F9C6F



6095C6

# Complementary

The Complementary color scheme is a pair of colors which are on the opposite of each other on the color wheel.



C67D7D



7DC6C6

# Split Complementary

Split-complementary colors differ from the complementary color scheme. The scheme consists of three colors, the original color and two neighbors of the complement color.



389CBB



C67D7D



4D9F89

# Square

The Square scheme is like the rectangle color scheme, but the four colors are evenly spaced on the color wheel.



C67D7D



8E955E



309FA5



8B8CC2

# Rectangle

The Rectangle color scheme consists of four colors that form a rectangle on the color wheel.



C67D7D



B18A5D



309FA5



5298C4

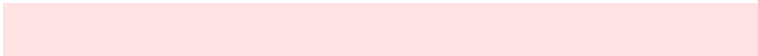


# Sweetspot

The Sweet Spot groups the original color and five complimentary colors.



C67D7D



FFE3E3



C67DC6



806F6F



000000



808080



# Same Dimension

The Same Dimension uses a secret algorithm to generate beautiful new colors.



C67D7D



FF8F8F



C6A27D



635A5A



A30000



240000



# Inverse Universe

The Inverse Universe completely reimagines the original color for something new.



7DC6C6



8FFFFFF



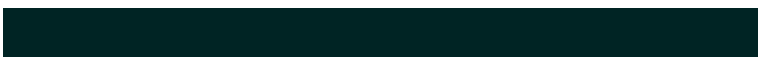
7DA2C6



5A6363



00A3A3

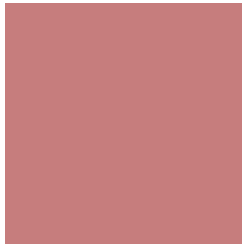


002424



# Previews

## White Background



This preview shows how the Hex color C67D7D looks on a white background.

## Color Contrast Check

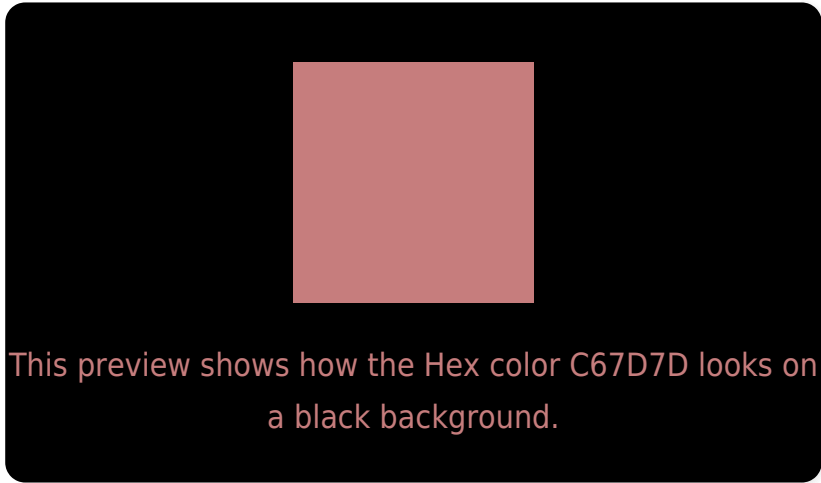
Large Text (above 18pt) WCAG AA ✓ Pass

Any Text WCAG AA × Fail

Large Text (above 18pt) WCAG AAA × Fail

Any Text WCAG AAA × Fail

# Black Background



## Color Contrast Check

Large Text (above 18pt) WCAG AA ✓ Pass

Any Text WCAG AA ✓ Pass

Large Text (above 18pt) WCAG AAA ✓ Pass

Any Text WCAG AAA × Fail

If you want to check with other color combinations, try the [Color Contrast Checker](#).



## Hex C67D7D Background



This preview shows how black text looks on a background with the Hex color C67D7D.

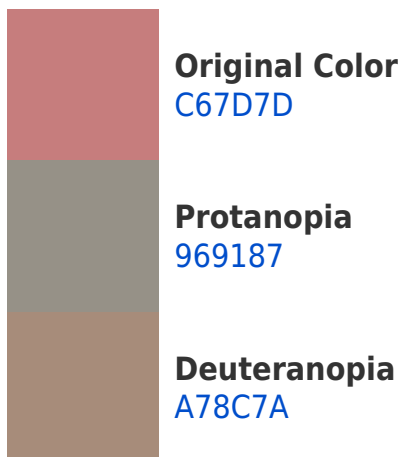


This preview shows how white text looks on a background with the Hex color C67D7D.

# Color Blindness Simulation

Color vision deficiency is a very complex topic, and I could not describe the different causes any better than Wikipedia does, so if you want to learn more, you should check out their [article about color blindness](#).

## Dichromacy





**Tritanopia**  
C77C85

# Trichromacy



**Original Color**  
C67D7D

**Protanomaly**  
A78A83

**Deuteranomaly**  
B2877B

**Tritanomaly**  
C77C82

# Monochromacy



**Original Color**  
C67D7D

**Achromatopsia**  
939393

**Achromatomaly**  
A68B8B

# CSS Examples

## Text

The CSS property to change the color of the text to Hex C67D7D is called "color". The color property can be set on classes, ids or directly on the HTML element.

This example shows how text in the color #C67D7D looks like.

```
.text, #text, p{  
    color:#C67D7D  
}
```

If you want to add a text shadow in that color use the text-shadow property, you can generate a text shadow directly with our [CSS Text Shadow Generator](#).

Here you see how black text with a 4 pixel #C67D7D colored shadow looks like.

```
.shadow{ text-shadow: 4px 4px 2px #C67D7D
}
```

## Border

The CSS property to change the border of an element to Hex C67D7D is called "border". The border property can be set on classes, ids or directly on the HTML element.

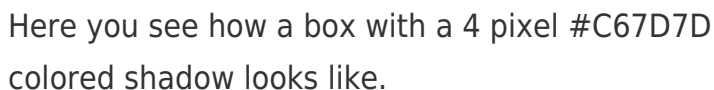
This example shows the color as border, it can be applied via the CSS property "border" or "border-color".

```
.border, #border, table{ border:4px solid
#C67D7D }
```

If only the border color should be changed use the property `border-color`.

```
.border{ border-color:#C67D7D }
```

If you want to add a box shadow in that color use:



Here you see how a box with a 4 pixel #C67D7D colored shadow looks like.

```
.boxshadow{ -moz-box-shadow:4px 4px 4px  
4px #C67D7D; -webkit-box-shadow:4px 4px  
4px 4px #C67D7D; box-shadow:4px 4px 4px  
4px #C67D7D }
```

# Background

The CSS property to change the background color of an element to Hex C67D7D is called "background". The background property can be set on classes, ids or directly on the HTML element.

```
.background, #background, body{  
background:#C67D7D }
```

If only the background color should be changed can be used:

```
.background{ background-color:#C67D7D }
```

This example shows the color as background, it is applied via the CSS property "background".

To optimize and compress your CSS code, you can use our [online CSS compressor and optimizer](#) based on csstidy. If you want to create a linear or radial gradient as background or border, check our [CSS Gradient Generator](#).



Hey! You found this booklet interesting? Support Converting Colors with the new Membership Option!

The pro membership hides all ads, plus gives you double the colors in the color bucket, and more awesome pro features!

**[Learn more, Memberships starting at \\$2.50/m!](#)**

**Follow me  
on Twitter!**

@ConvertingColor