

Converting Colors

Hex(C68D4E)

Have a look what the booklet for
Hex(C68D4E) contains.

Hex(C68D4E)	3
<i>Conversions</i>	4
<i>Details</i>	6
<i>Harmonies</i>	11
<i>Previews</i>	23
<i>Color Blindness Simulation</i>	26
<i>CSS Examples</i>	29

Color

Hex(C68D4E)

Conversions

Conversions Part 1

Format	Color
Hex	C68D4E
RGB	198, 141, 78
RGB Percent	78%, 55%, 31%
CMY	0.2235, 0.4471, 0.6941
CMYK	0.00, 0.29, 0.61, 0.22
HSL	32°, 51%, 54%
HSV	32°, 61%, 78%
XYZ	34.1887, 31.6056, 11.5063
YIQ	150.8610, 54.1950, -7.5090

Conversions

Conversions Part 2

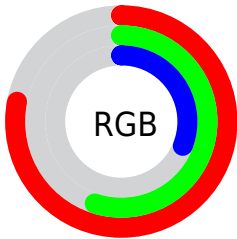
Format	Color
RYB	187, 198, 78
Decimal	13012302
CIELab	63.02, 15.01, 41.68
CIELCh	63, 44.297, 70.197
Yxy	31.6056, 0.4423, 0.4089
Android (android.graphics.Color)	4291202382 (0xFFC68D4E)
YUV	150.8610, -35.9205, 41.3409
Hunter-Lab	56.2188, 10.1694, 27.2183

Details

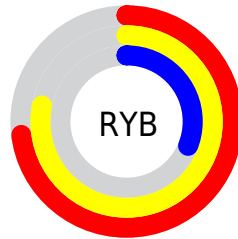
The Hex color **C68D4E** is a dark color, and the websafe version is hex **CC9966**. The color can be described as middle muted orange. A complement of this color would be **4E87C6**, and the grayscale version is **979797**.

A 20% lighter version of the original color is **FFC381**, and **8D5B1D** is the 20% darker color. If you saturate the color by 10%, you get **C6843A**, and if you desaturate by 10%, it is **C69662**.

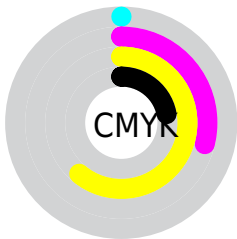
Distribution



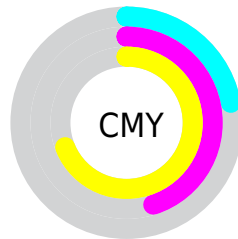
- Red (78%)
- Green (55%)
- Blue (31%)



- Red (73%)
- Yellow (78%)
- Blue (31%)



- Cyan (0%)
- Magenta (29%)
- Yellow (61%)
- Black (22%)



- Cyan (22%)
- Magenta (45%)
- Yellow (69%)

Brightness & Saturation Gradients

These gradients show how the Hex color C68D4E changes by changing the brightness by 10 percent. The first figure shows a shift by +10% for each color and the second figure -10%.

Similar to the brightness gradients but the following saturation gradients show a change of the Hex color C68D4E by changing the saturation by 10% instead.

 C68D4E

 C68D4E

FFFFFF

 A97336

 FFC381

 8D5B1D

 FFDF9B

 714303

 FFFBB7

 562D00

 FFFFFD3

 3B1800

 FFFFFEF

 230000

 000000

 C68D4E

 C68D4E

 C6843A

 C69662

 C67A26

 C6A076

 C67113

 C6A989

 C66800

 C6B39D

 C6BCB1

 C6C5C5

 C6CFD9

 C6D8EC

 C6E2FF

Harmonies

Analogous

The Analogous color harmony consists of three colors that are next to each other on the color wheel.



DD7F68



C68D4E



A39B48

Triad

The Triadic color harmony groups three colors that are evenly spaced from another and form a triangle on the color wheel.



C68D4E



00ADA5



AD89D5

Complementary

The Complementary color scheme is a pair of colors which are on the opposite of each other on the color wheel.



C68D4E



4E87C6

Split Complementary

Split-complementary colors differ from the complementary color scheme. The scheme consists of three colors, the original color and two neighbors of the complement color.



7098E6



C68D4E



00ABCA

Square

The Square scheme is like the rectangle color scheme, but the four colors are evenly spaced on the color wheel.



C68D4E



40AB7C



00A4E2



D47CB4

Rectangle

The Rectangle color scheme consists of four colors that form a rectangle on the color wheel.



C68D4E



88A252



00A4E2



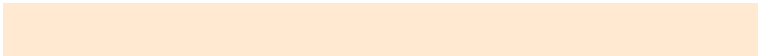
9C8EDD

Sweetspot

The Sweet Spot groups the original color and five complimentary colors.



C68D4E



FFE9D1



C64E88



807263



000000



808080

Same Dimension

The Same Dimension uses a secret algorithm to generate beautiful new colors.



C68D4E



FFA745



C4C64E



635F5A



A35600



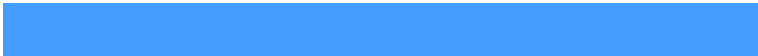
241300

Inverse Universe

The Inverse Universe completely reimagines the original color for something new.



4E87C6



459DFF



504EC6



5A5E63



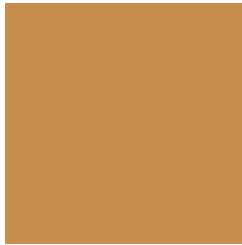
004EA3



001124

Previews

White Background



This preview shows how the Hex color C68D4E looks on a white background.

Color Contrast Check

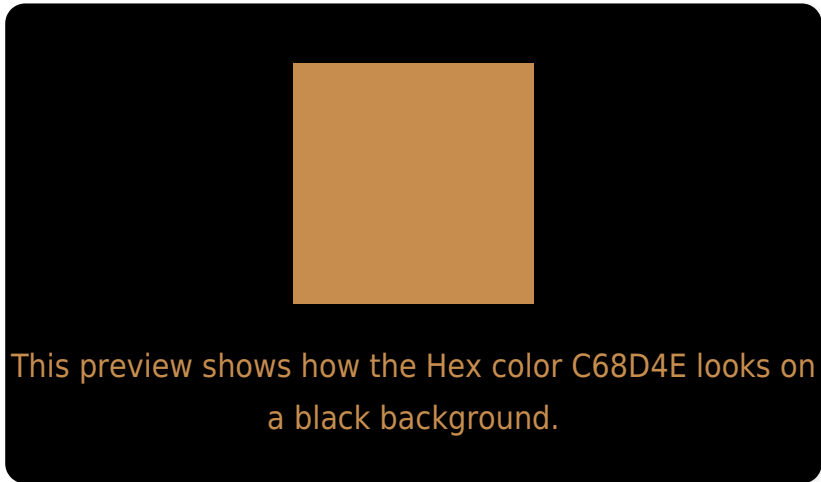
Large Text (above 18pt) WCAG AA × Fail

Any Text WCAG AA × Fail

Large Text (above 18pt) WCAG AAA × Fail

Any Text WCAG AAA × Fail

Black Background



Color Contrast Check

Large Text (above 18pt) WCAG AA ✓ Pass

Any Text WCAG AA ✓ Pass

Large Text (above 18pt) WCAG AAA ✓ Pass

Any Text WCAG AAA ✓ Pass

If you want to check with other color combinations, try the [Color Contrast Checker](#).

Hex C68D4E Background



This preview shows how black text looks on a background with the Hex color C68D4E.



This preview shows how white text looks on a background with the Hex color C68D4E.

Color Blindness Simulation

Color vision deficiency is a very complex topic, and I could not describe the different causes any better than Wikipedia does, so if you want to learn more, you should check out their [article about color blindness](#).

Dichromacy



Original Color
C68D4E

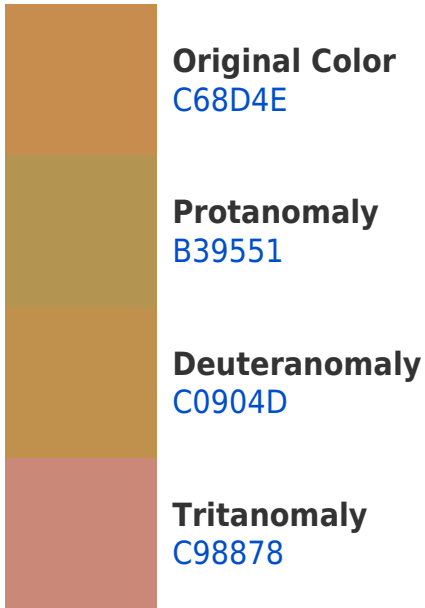
Protanopia
A89952

Deuteranopia
BC924D



Tritanopia
CB8590

Trichromacy



Monochromacy



CSS Examples

Text

The CSS property to change the color of the text to Hex C68D4E is called "color". The color property can be set on classes, ids or directly on the HTML element.

This example shows how text in the color #C68D4E looks like.

```
.text, #text, p{  
    color:#C68D4E  
}
```

If you want to add a text shadow in that color use the text-shadow property, you can generate a text shadow directly with our [CSS Text Shadow Generator](#).

Here you see how black text with a 4 pixel #C68D4E colored shadow looks like.

```
.shadow{ text-shadow: 4px 4px 2px #C68D4E
}
```

Border

The CSS property to change the border of an element to Hex C68D4E is called "border". The border property can be set on classes, ids or directly on the HTML element.

This example shows the color as border, it can be applied via the CSS property "border" or "border-color".

```
.border, #border, table{ border:4px solid
#C68D4E }
```

If only the border color should be changed use the property `border-color`.

```
.border{ border-color:#C68D4E }
```

If you want to add a box shadow in that color use:

Here you see how a box with a 4 pixel #C68D4E colored shadow looks like.

```
.boxshadow{ -moz-box-shadow:4px 4px 4px  
4px #C68D4E; -webkit-box-shadow:4px 4px  
4px 4px #C68D4E; box-shadow:4px 4px 4px  
4px #C68D4E }
```

Background

The CSS property to change the background color of an element to Hex C68D4E is called "background". The background property can be set on classes, ids or directly on the HTML element.

```
.background, #background, body{  
background:#C68D4E }
```

If only the background color should be changed can be used:

```
.background{ background-color:#C68D4E }
```

This example shows the color as background, it is applied via the CSS property "background".

To optimize and compress your CSS code, you can use our [online CSS compressor and optimizer](#) based on csstidy. If you want to create a linear or radial gradient as background or border, check our [CSS Gradient Generator](#).

Hey! You found this booklet interesting? Support Converting Colors with the new Membership Option!

The pro membership hides all ads, plus gives you double the colors in the color bucket, and more awesome pro features!

[Learn more, Memberships starting at \\$2.50/m!](#)

**Follow me
on Twitter!**

@ConvertingColor