

# Converting Colors

Hex(C68E51)

Have a look what the booklet for  
Hex(C68E51) contains.

<b>Hex(C68E51)</b> .....	3
<i><b>Conversions</b></i> .....	4
<i><b>Details</b></i> .....	6
<i><b>Harmonies</b></i> .....	11
<i><b>Previews</b></i> .....	23
<i><b>Color Blindness Simulation</b></i> .....	26
<i><b>CSS Examples</b></i> .....	29

# **Color**

**Hex(C68E51)**

# Conversions

## Conversions Part 1

<b>Format</b>	<b>Color</b>
Hex	C68E51
RGB	198, 142, 81
RGB Percent	78%, 56%, 32%
CMY	0.2235, 0.4431, 0.6824
CMYK	0.00, 0.28, 0.59, 0.22
HSL	31°, 51%, 55%
HSV	31°, 59%, 78%
XYZ	34.4469, 31.9458, 12.1352
YIQ	151.7900, 52.9570, -7.0990

# Conversions

## Conversions Part 2

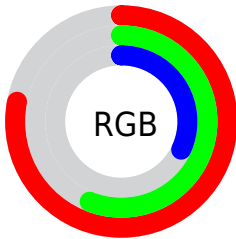
<b>Format</b>	<b>Color</b>
<b>RYB</b>	188, 198, 81
Decimal	13012561
CIELab	63.30, 14.68, 40.47
CIELCh	63, 43.054, 70.061
Yxy	31.9458, 0.4387, 0.4068
Android (android.graphics.Color)	4291202641 (0xFFC68E51)
YUV	151.7900, -34.8995, 40.5262
Hunter-Lab	56.5207, 9.8769, 26.8347

# Details

The Hex color **C68E51** is a dark color, and the websafe version is hex **CC9966**. The color can be described as middle muted orange. A complement of this color would be **5189C6**, and the grayscale version is **989898**.

A 20% lighter version of the original color is **FFC484**, and **8D5C21** is the 20% darker color. If you saturate the color by 10%, you get **C6853D**, and if you desaturate by 10%, it is **C69765**.

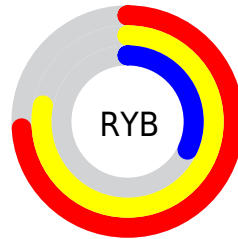
# Distribution



Red (78%)

Green (56%)

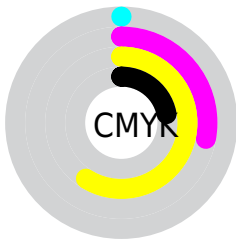
Blue (32%)



Red (74%)

Yellow (78%)

Blue (32%)

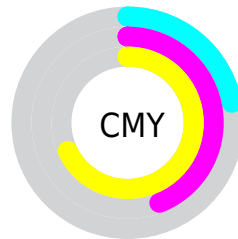


Cyan (0%)

Magenta (28%)

Yellow (59%)

Black (22%)



Cyan (22%)

Magenta (44%)

Yellow (68%)

# Brightness & Saturation Gradients

These gradients show how the Hex color C68E51 changes by changing the brightness by 10 percent. The first figure shows a shift by +10% for each color and the second figure -10%.

Similar to the brightness gradients but the following saturation gradients show a change of the Hex color C68E51 by changing the saturation by 10% instead.



 C68E51

 C68E51

FFFFFF

 A97439

 FFC484

 8D5C21

 FFE09E

 714407

 FFFCBA

 562E00

 FFFFFD6

 3B1900

 FFFFFFF2

 240000

 000000

 C68E51

 C68E51

 C6853D

 C69765

 C67B29

 C6A179

 C67216

 C6AA8C

 C66802

 C6B4A0

 C66700

 C6BDB4

 C6C7C8

 C6D0DC

 C6DAEF

 C6E3FF

# Harmonies

## Analogous

The Analogous color harmony consists of three colors that are next to each other on the color wheel.



DC816A



C68E51



A49B4C

# Triad

The Triadic color harmony groups three colors that are evenly spaced from another and form a triangle on the color wheel.



C68E51



00ADA5



AE8AD4

# Complementary

The Complementary color scheme is a pair of colors which are on the opposite of each other on the color wheel.



C68E51



5189C6

# Split Complementary

Split-complementary colors differ from the complementary color scheme. The scheme consists of three colors, the original color and two neighbors of the complement color.



7299E4



C68E51



00ABC9

# Square

The Square scheme is like the rectangle color scheme, but the four colors are evenly spaced on the color wheel.



C68E51



45AB7E



00A4E1



D37EB4

# Rectangle

The Rectangle color scheme consists of four colors that form a rectangle on the color wheel.



C68E51



89A255



00A4E1



9C8FDC



# Sweetspot

The Sweet Spot groups the original color and five complimentary colors.



C68E51



FFE9D1



C6518A



807263



000000



808080



# Same Dimension

The Same Dimension uses a secret algorithm to generate beautiful new colors.



C68E51



FFA84A



C4C651



635F5A



A35500



241300



# Inverse Universe

The Inverse Universe completely reimagines the original color for something new.



5189C6



4AA1FF



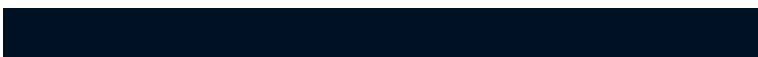
5351C6



5A5E63



004EA3

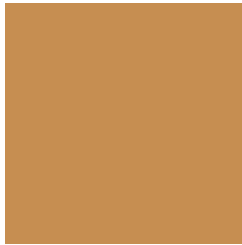


001124



# Previews

## White Background



This preview shows how the Hex color C68E51 looks on a white background.

## Color Contrast Check

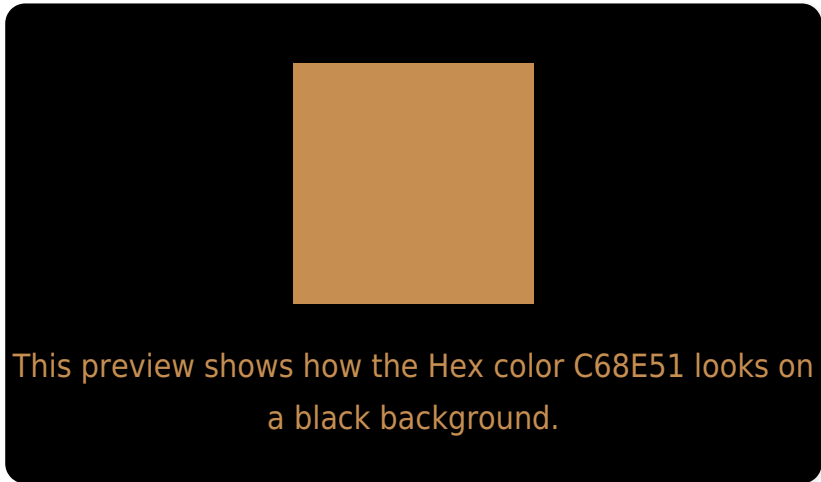
Large Text (above 18pt) WCAG AA × Fail

Any Text WCAG AA × Fail

Large Text (above 18pt) WCAG AAA × Fail

Any Text WCAG AAA × Fail

# Black Background



## Color Contrast Check

Large Text (above 18pt) WCAG AA ✓ Pass

Any Text WCAG AA ✓ Pass

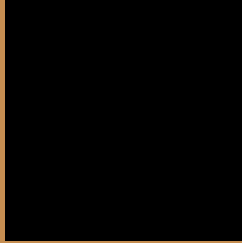
Large Text (above 18pt) WCAG AAA ✓ Pass

Any Text WCAG AAA ✓ Pass

If you want to check with other color combinations, try the [Color Contrast Checker](#).



## Hex C68E51 Background



This preview shows how black text looks on a background with the Hex color C68E51.

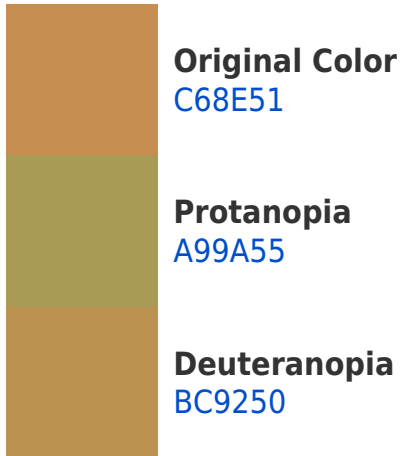


This preview shows how white text looks on a background with the Hex color C68E51.

# Color Blindness Simulation

Color vision deficiency is a very complex topic, and I could not describe the different causes any better than Wikipedia does, so if you want to learn more, you should check out their [article about color blindness](#).

## Dichromacy



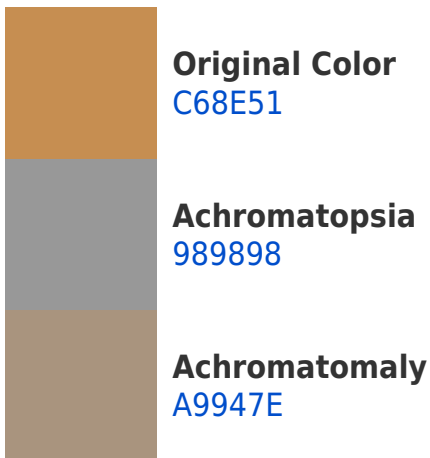


**Tritanopia**  
CB8791

# Trichromacy



# Monochromacy



# CSS Examples

## Text

The CSS property to change the color of the text to Hex C68E51 is called "color". The color property can be set on classes, ids or directly on the HTML element.

This example shows how text in the color #C68E51 looks like.

```
.text, #text, p{  
    color:#C68E51  
}
```

If you want to add a text shadow in that color use the text-shadow property, you can generate a text shadow directly with our [CSS Text Shadow Generator](#).

Here you see how black text with a 4 pixel #C68E51 colored shadow looks like.

```
.shadow{ text-shadow: 4px 4px 2px #C68E51
}
```

## Border

The CSS property to change the border of an element to Hex C68E51 is called "border". The border property can be set on classes, ids or directly on the HTML element.

This example shows the color as border, it can be applied via the CSS property "border" or "border-color".

```
.border, #border, table{ border:4px solid
#C68E51 }
```

If only the border color should be changed use the property `border-color`.

```
.border{ border-color:#C68E51 }
```

If you want to add a box shadow in that color use:

Here you see how a box with a 4 pixel #C68E51 colored shadow looks like.

```
.boxshadow{ -moz-box-shadow:4px 4px 4px  
4px #C68E51; -webkit-box-shadow:4px 4px  
4px 4px #C68E51; box-shadow:4px 4px 4px  
4px #C68E51 }
```

# Background

The CSS property to change the background color of an element to Hex C68E51 is called "background". The background property can be set on classes, ids or directly on the HTML element.

```
.background, #background, body{  
background:#C68E51 }
```

If only the background color should be changed can be used:

```
.background{ background-color:#C68E51 }
```

This example shows the color as background, it is applied via the CSS property "background".

To optimize and compress your CSS code, you can use our [online CSS compressor and optimizer](#) based on csstidy. If you want to create a linear or radial gradient as background or border, check our [CSS Gradient Generator](#).



Hey! You found this booklet interesting? Support Converting Colors with the new Membership Option!

The pro membership hides all ads, plus gives you double the colors in the color bucket, and more awesome pro features!

**[Learn more, Memberships starting at \\$2.50/m!](#)**

**Follow me  
on Twitter!**

@ConvertingColor