

Converting Colors

Hex(C6958B)

Have a look what the booklet for
Hex(C6958B) contains.

Hex(C6958B)	3
<i>Conversions</i>	4
<i>Details</i>	6
<i>Harmonies</i>	11
<i>Previews</i>	23
<i>Color Blindness Simulation</i>	26
<i>CSS Examples</i>	29

Color

Hex(C6958B)

Conversions

Conversions Part 1

Format	Color
Hex	C6958B
RGB	198, 149, 139
RGB Percent	78%, 58%, 55%
CMY	0.2235, 0.4157, 0.4549
CMYK	0.00, 0.25, 0.30, 0.22
HSL	10°, 34%, 66%
HSV	10°, 30%, 78%
XYZ	38.6963, 35.3647, 29.2127
YIQ	162.5110, 32.4140, 7.2780

Conversions

Conversions Part 2

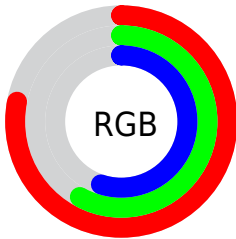
Format	Color
R _Y B	198, 151, 139
Decimal	13014411
CIE Lab	66.03, 16.99, 12.44
CIE LCh	66, 21.061, 36.206
Yxy	35.3647, 0.3747, 0.3424
Android (android.graphics.Color)	4291204491 (0xFFC6958B)
YUV	162.5110, -11.5909, 31.1239
Hunter-Lab	59.4683, 12.0816, 12.5027

Details

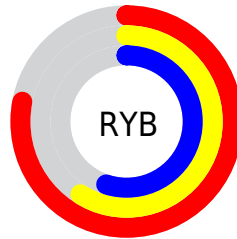
The Hex color **C6958B** is a light color, and the websafe version is hex **CC9999**. A complement of this color would be **8BBCC6**, and the grayscale version is **A3A3A3**.

A 20% lighter version of the original color is **FFCBC0**, and **8F6259** is the 20% darker color. If you saturate the color by 10%, you get **C68577**, and if you desaturate by 10%, it is **C6A59F**.

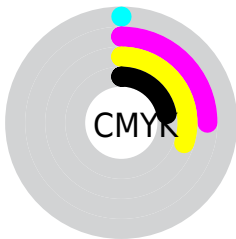
Distribution



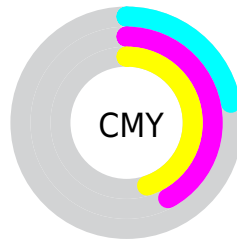
- Red (78%)
- Green (58%)
- Blue (55%)



- Red (78%)
- Yellow (59%)
- Blue (55%)



- Cyan (0%)
- Magenta (25%)
- Yellow (30%)
- Black (22%)



- Cyan (22%)
- Magenta (42%)
- Yellow (45%)

Brightness & Saturation Gradients

These gradients show how the Hex color C6958B changes by changing the brightness by 10 percent. The first figure shows a shift by +10% for each color and the second figure -10%.

Similar to the brightness gradients but the following saturation gradients show a change of the Hex color C6958B by changing the saturation by 10% instead.

 C6958B

 C6958B

FFFFFF

 AA7B72

 FFCBC0

 8F6259

 FFE7DC

 744A42

 FFFFF9

 5B332C

 421D17

 2B0700

 000000

 C6958B

 C6958B

 C68577

 C6A59F

 C67463

 C6B6B3

 C66450

 C6C6C6

 C6533C

 C6D7DA

 C64328

 C6E7EE

 C63214

 C6F8FF

 C62200

 C6FFFF

Harmonies

Analogous

The Analogous color harmony consists of three colors that are next to each other on the color wheel.



C7939D



C6958B



BC9A7E

Triad

The Triadic color harmony groups three colors that are evenly spaced from another and form a triangle on the color wheel.



C6958B



80AA91



8FA1C6

Complementary

The Complementary color scheme is a pair of colors which are on the opposite of each other on the color wheel.



C6958B



8BBCC6

Split Complementary

Split-complementary colors differ from the complementary color scheme. The scheme consists of three colors, the original color and two neighbors of the complement color.



78A7C2



C6958B



70ABA4

Square

The Square scheme is like the rectangle color scheme, but the four colors are evenly spaced on the color wheel.



C6958B



96A682



6CAAB6



A99ABF

Rectangle

The Rectangle color scheme consists of four colors that form a rectangle on the color wheel.



C6958B



B19E7B



6CAAB6



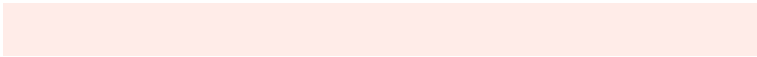
87A3C6

Sweetspot

The Sweet Spot groups the original color and five complimentary colors.



C6958B



FFECE8



C68BBC



807471



000000



808080

Same Dimension

The Same Dimension uses a secret algorithm to generate beautiful new colors.



C6958B



FFB3A3



C6B28B



635B5A



A31C00



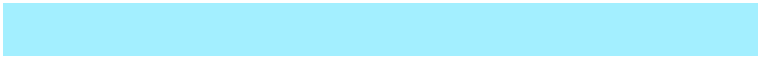
240600

Inverse Universe

The Inverse Universe completely reimagines the original color for something new.



8BBCC6



A3EFFF



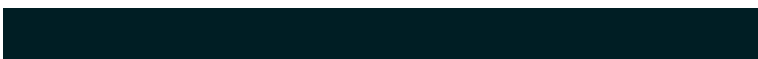
8B9FC6



5A6263



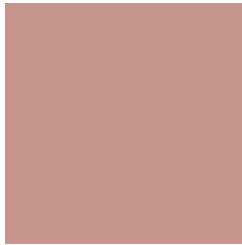
0088A3



001E24

Previews

White Background



This preview shows how the Hex color C6958B looks on a white background.

Color Contrast Check

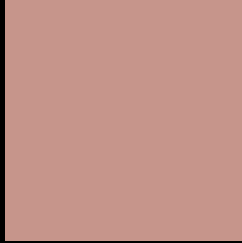
Large Text (above 18pt) WCAG AA × Fail

Any Text WCAG AA × Fail

Large Text (above 18pt) WCAG AAA × Fail

Any Text WCAG AAA × Fail

Black Background



This preview shows how the Hex color C6958B looks on a black background.

Color Contrast Check

Large Text (above 18pt) WCAG AA ✓ Pass

Any Text WCAG AA ✓ Pass

Large Text (above 18pt) WCAG AAA ✓ Pass

Any Text WCAG AAA ✓ Pass

If you want to check with other color combinations, try the [Color Contrast Checker](#).

Hex C6958B Background



This preview shows how black text looks on a background with the Hex color C6958B.

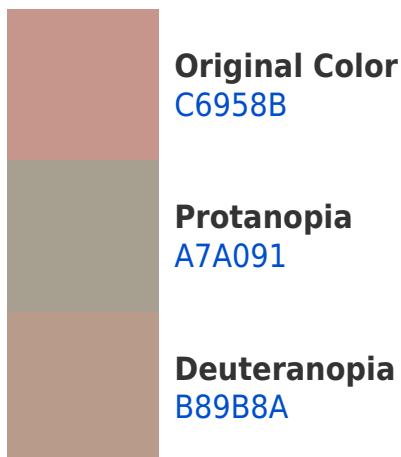



This preview shows how white text looks on a background with the Hex color C6958B.

Color Blindness Simulation

Color vision deficiency is a very complex topic, and I could not describe the different causes any better than Wikipedia does, so if you want to learn more, you should check out their [article about color blindness](#).

Dichromacy





Tritanopia
C8929D

Trichromacy



Original Color
C6958B

Protanomaly
B29C8F

Deuteranomaly
BD998A

Tritanomaly
C79396

Monochromacy



Original Color
C6958B

Achromatopsia
A3A3A3

Achromatomaly
B09E9A

CSS Examples

Text

The CSS property to change the color of the text to Hex C6958B is called "color". The color property can be set on classes, ids or directly on the HTML element.

This example shows how text in the color #C6958B looks like.

```
.text, #text, p{  
    color:#C6958B  
}
```

If you want to add a text shadow in that color use the text-shadow property, you can generate a text shadow directly with our [CSS Text Shadow Generator](#).

Here you see how black text with a 4 pixel #C6958B colored shadow looks like.

```
.shadow{ text-shadow: 4px 4px 2px #C6958B
}
```

Border

The CSS property to change the border of an element to Hex C6958B is called "border". The border property can be set on classes, ids or directly on the HTML element.

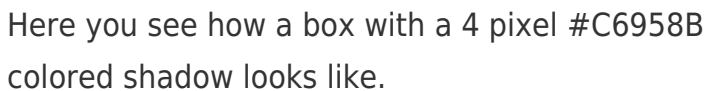
This example shows the color as border, it can be applied via the CSS property "border" or "border-color".

```
.border, #border, table{ border:4px solid
#C6958B }
```

If only the border color should be changed use the property `border-color`.

```
.border{ border-color:#C6958B }
```

If you want to add a box shadow in that color use:



Here you see how a box with a 4 pixel #C6958B colored shadow looks like.

```
.boxshadow{ -moz-box-shadow:4px 4px 4px  
4px #C6958B; -webkit-box-shadow:4px 4px  
4px 4px #C6958B; box-shadow:4px 4px 4px  
4px #C6958B }
```

Background

The CSS property to change the background color of an element to Hex C6958B is called "background". The background property can be set on classes, ids or directly on the HTML element.

```
.background, #background, body{  
background:#C6958B }
```

If only the background color should be changed can be used:

```
.background{ background-color:#C6958B }
```

This example shows the color as background, it is applied via the CSS property "background".

To optimize and compress your CSS code, you can use our [online CSS compressor and optimizer](#) based on csstidy. If you want to create a linear or radial gradient as background or border, check our [CSS Gradient Generator](#).

Hey! You found this booklet interesting? Support Converting Colors with the new Membership Option!

The pro membership hides all ads, plus gives you double the colors in the color bucket, and more awesome pro features!

[Learn more, Memberships starting at \\$2.50/m!](#)

**Follow me
on Twitter!**

@ConvertingColor