

Converting Colors

Hex(C69A90)

Have a look what the booklet for
Hex(C69A90) contains.

Hex(C69A90)	3
<i>Conversions</i>	4
<i>Details</i>	6
<i>Harmonies</i>	11
<i>Previews</i>	23
<i>Color Blindness Simulation</i>	26
<i>CSS Examples</i>	29

Color

Hex(C69A90)

Conversions

Conversions Part 1

Format	Color
Hex	C69A90
RGB	198, 154, 144
RGB Percent	78%, 60%, 56%
CMY	0.2235, 0.3961, 0.4353
CMYK	0.00, 0.22, 0.27, 0.22
HSL	11°, 32%, 67%
HSV	11°, 27%, 78%
XYZ	39.8783, 37.1306, 31.4507
YIQ	166.0160, 29.4340, 6.2180

Conversions

Conversions Part 2

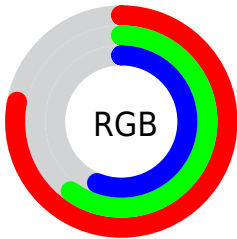
Format	Color
R _Y B	198, 156, 144
Decimal	13015696
CIE Lab	67.37, 14.94, 11.54
CIE LCh	67, 18.880, 37.692
Yxy	37.1306, 0.3677, 0.3423
Android (android.graphics.Color)	4291205776 (0xFFC69A90)
YUV	166.0160, -10.8539, 28.0500
Hunter-Lab	60.9349, 10.1819, 12.0527

Details

The Hex color **C69A90** is a light color, and the websafe version is hex **CC9999**. A complement of this color would be **90BCC6**, and the grayscale version is **A6A6A6**.

A 20% lighter version of the original color is **FFD1C6**, and **8F675E** is the 20% darker color. If you saturate the color by 10%, you get **C68A7C**, and if you desaturate by 10%, it is **C6AAA4**.

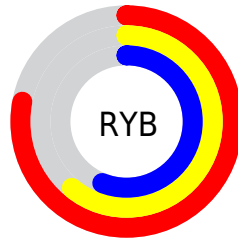
Distribution



Red (78%)

Green (60%)

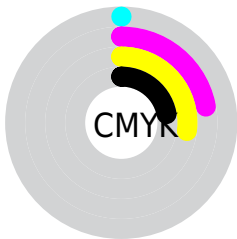
Blue (56%)



Red (78%)

Yellow (61%)

Blue (56%)

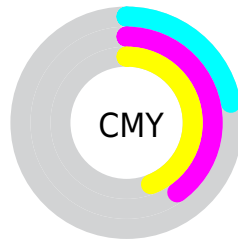


Cyan (0%)

Magenta (22%)

Yellow (27%)

Black (22%)



Cyan (22%)

Magenta (40%)

Yellow (44%)

Brightness & Saturation Gradients

These gradients show how the Hex color C69A90 changes by changing the brightness by 10 percent. The first figure shows a shift by +10% for each color and the second figure -10%.

Similar to the brightness gradients but the following saturation gradients show a change of the Hex color C69A90 by changing the saturation by 10% instead.

 C69A90

 C69A90

FFFFFF

 AA8076

 FFD1C6

 8F675E

 FFEDE2

 754F46

FFFFFFE

 5B3730

 43221B

 2C0D00

 090000

 000000

 C69A90

 C69A90

 C68A7C

 C6AAA4

 C67A68

 C6BAB8

 C66A55

 C6CACB

 C65941

 C6DBDF

 C6492D

 C6EBF3

 C63919

 C6FBFF

 C62905

 C6FFFF

 C62500

Harmonies

Analogous

The Analogous color harmony consists of three colors that are next to each other on the color wheel.



C798A0



C69A90



BD9F85

Triad

The Triadic color harmony groups three colors that are evenly spaced from another and form a triangle on the color wheel.



C69A90



87AD97



96A4C5

Complementary

The Complementary color scheme is a pair of colors which are on the opposite of each other on the color wheel.



C69A90



90BCC6

Split Complementary

Split-complementary colors differ from the complementary color scheme. The scheme consists of three colors, the original color and two neighbors of the complement color.



82A9C3



C69A90



79AEA8

Square

The Square scheme is like the rectangle color scheme, but the four colors are evenly spaced on the color wheel.



C69A90



9AA989



76ADB8



AD9EBF

Rectangle

The Rectangle color scheme consists of four colors that form a rectangle on the color wheel.



C69A90



B2A282



76ADB8



8FA6C6

Sweetspot

The Sweet Spot groups the original color and five complimentary colors.



C69A90



FFEEEB



C690BC



807573



000000



808080

Same Dimension

The Same Dimension uses a secret algorithm to generate beautiful new colors.



C69A90



FFBAAB



C6B590



635B5A



A31E00



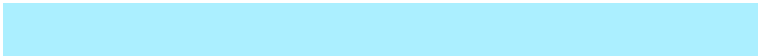
240700

Inverse Universe

The Inverse Universe completely reimagines the original color for something new.



90BCC6



ABEFFF



90A1C6



5A6263



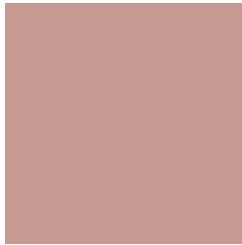
0085A3



001D24

Previews

White Background



This preview shows how the Hex color C69A90 looks on a white background.

Color Contrast Check

Large Text (above 18pt) WCAG AA × Fail

Any Text WCAG AA × Fail

Large Text (above 18pt) WCAG AAA × Fail

Any Text WCAG AAA × Fail

Black Background



This preview shows how the Hex color C69A90 looks on a black background.

Color Contrast Check

Large Text (above 18pt) WCAG AA ✓ Pass

Any Text WCAG AA ✓ Pass

Large Text (above 18pt) WCAG AAA ✓ Pass

Any Text WCAG AAA ✓ Pass

If you want to check with other color combinations, try the [Color Contrast Checker](#).

Hex C69A90 Background



This preview shows how black text looks on a background with the Hex color C69A90.



This preview shows how white text looks on a background with the Hex color C69A90.

Color Blindness Simulation

Color vision deficiency is a very complex topic, and I could not describe the different causes any better than Wikipedia does, so if you want to learn more, you should check out their [article about color blindness](#).

Dichromacy





Tritanopia
C897A3

Trichromacy



Original Color
C69A90

Protanomaly
B5A093

Deuteranomaly
C09D8F

Tritanomaly
C7989C

Monochromacy



Original Color
C69A90

Achromatopsia
A6A6A6

Achromatomaly
B2A29E

CSS Examples

Text

The CSS property to change the color of the text to Hex C69A90 is called "color". The color property can be set on classes, ids or directly on the HTML element.

This example shows how text in the color #C69A90 looks like.

```
.text, #text, p{  
    color:#C69A90  
}
```

If you want to add a text shadow in that color use the text-shadow property, you can generate a text shadow directly with our [CSS Text Shadow Generator](#).

Here you see how black text with a 4 pixel #C69A90 colored shadow looks like.

```
.shadow{ text-shadow: 4px 4px 2px #C69A90
}
```

Border

The CSS property to change the border of an element to Hex C69A90 is called "border". The border property can be set on classes, ids or directly on the HTML element.

This example shows the color as border, it can be applied via the CSS property "border" or "border-color".

```
.border, #border, table{ border:4px solid
#C69A90 }
```

If only the border color should be changed use the property `border-color`.

```
.border{ border-color:#C69A90 }
```

If you want to add a box shadow in that color use:

Here you see how a box with a 4 pixel #C69A90 colored shadow looks like.

```
.boxshadow{ -moz-box-shadow:4px 4px 4px  
4px #C69A90; -webkit-box-shadow:4px 4px  
4px 4px #C69A90; box-shadow:4px 4px 4px  
4px #C69A90 }
```

Background

The CSS property to change the background color of an element to Hex C69A90 is called "background". The background property can be set on classes, ids or directly on the HTML element.

```
.background, #background, body{  
background:#C69A90 }
```

If only the background color should be changed can be used:

```
.background{ background-color:#C69A90 }
```

This example shows the color as background, it is applied via the CSS property "background".

To optimize and compress your CSS code, you can use our [online CSS compressor and optimizer](#) based on csstidy. If you want to create a linear or radial gradient as background or border, check our [CSS Gradient Generator](#).

Hey! You found this booklet interesting? Support Converting Colors with the new Membership Option!

The pro membership hides all ads, plus gives you double the colors in the color bucket, and more awesome pro features!

[Learn more, Memberships starting at \\$2.50/m!](#)

**Follow me
on Twitter!**

@ConvertingColor