

Converting Colors

Hex(C69B90)

Have a look what the booklet for
Hex(C69B90) contains.

| | |
|--|----|
| Hex(C69B90) | 3 |
| <i>Conversions</i> | 4 |
| <i>Details</i> | 6 |
| <i>Harmonies</i> | 11 |
| <i>Previews</i> | 23 |
| <i>Color Blindness Simulation</i> | 26 |
| <i>CSS Examples</i> | 29 |

Color

Hex(C69B90)

Conversions

Conversions Part 1

| Format | Color |
|---------------|---------------------------|
| Hex | C69B90 |
| RGB | 198, 155, 144 |
| RGB Percent | 78%, 61%, 56% |
| CMY | 0.2235, 0.3922, 0.4353 |
| CMYK | 0.00, 0.22, 0.27, 0.22 |
| HSL | 12°, 32%, 67% |
| HSV | 12°, 27%, 78% |
| XYZ | 40.0441, 37.4621, 31.5059 |
| YIQ | 166.6030, 29.1590, 5.6950 |

Conversions

Conversions Part 2

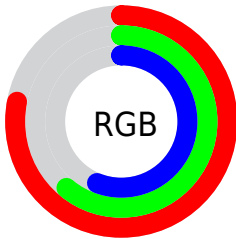
| Format | Color |
|-------------------------------------|--------------------------------|
| R _Y B | 198, 158, 144 |
| Decimal | 13015952 |
| CIE Lab | 67.62, 14.39, 11.89 |
| CIE LCh | 68, 18.669, 39.569 |
| Yxy | 37.4621, 0.3673, 0.3437 |
| Android (android.graphics.Color) | 4291206032 (0xFFC69B90) |
| YUV | 166.6030, -11.1433, 27.5352 |
| Hunter-Lab | 61.2063, 9.6723, 12.3249 |

Details

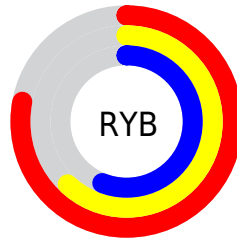
The Hex color **C69B90** is a light color, and the websafe version is hex **CC9999**. A complement of this color would be **90BBC6**, and the grayscale version is **A7A7A7**.

A 20% lighter version of the original color is **FFD2C6**, and **8F685E** is the 20% darker color. If you saturate the color by 10%, you get **C68B7C**, and if you desaturate by 10%, it is **C6ABA4**.

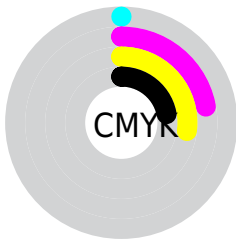
Distribution



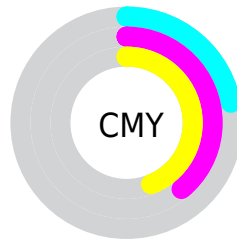
- Red (78%)
- Green (61%)
- Blue (56%)



- Red (78%)
- Yellow (62%)
- Blue (56%)



- Cyan (0%)
- Magenta (22%)
- Yellow (27%)
- Black (22%)



- Cyan (22%)
- Magenta (39%)
- Yellow (44%)

Brightness & Saturation Gradients

These gradients show how the Hex color C69B90 changes by changing the brightness by 10 percent. The first figure shows a shift by +10% for each color and the second figure -10%.

Similar to the brightness gradients but the following saturation gradients show a change of the Hex color C69B90 by changing the saturation by 10% instead.

 C69B90

 C69B90

FFFFFF

 AA8176

 FFD2C6

 8F685E

 FFEEEE

 755046

FFFFFFE

 5B3830

 43231B

 2C0E00

 0B0000

 000000

 C69B90

 C69B90

 C68B7C

 C6ABA4

 C67B68

 C6BBB8

 C66C55

 C6CACB

 C65C41

 C6DADF

 C64C2D

 C6EAF3

 C63C19

 C6FAFF

 C62D05

 C6FFFF

 C62800

Harmonies

Analogous

The Analogous color harmony consists of three colors that are next to each other on the color wheel.



C799A0



C69B90



BCA086

Triad

The Triadic color harmony groups three colors that are evenly spaced from another and form a triangle on the color wheel.



C69B90



87AD98



99A4C6

Complementary

The Complementary color scheme is a pair of colors which are on the opposite of each other on the color wheel.



C69B90



90BBC6

Split Complementary

Split-complementary colors differ from the complementary color scheme. The scheme consists of three colors, the original color and two neighbors of the complement color.



84AAC4



C69B90



7AAEAA

Square

The Square scheme is like the rectangle color scheme, but the four colors are evenly spaced on the color wheel.



C69B90



99AA8A



78ADB9



AE9FBF

Rectangle

The Rectangle color scheme consists of four colors that form a rectangle on the color wheel.



C69B90



B2A383



78ADB9



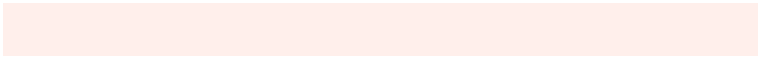
91A6C6

Sweetspot

The Sweet Spot groups the original color and five complimentary colors.



C69B90



FFEFE8



C690BB



807573



000000



808080

Same Dimension

The Same Dimension uses a secret algorithm to generate beautiful new colors.



C69B90



FFBCAB



C6B690



635C5A



A32100



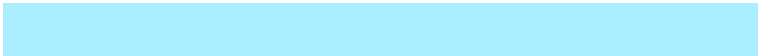
240700

Inverse Universe

The Inverse Universe completely reimagines the original color for something new.



90BBC6



ABEEFF



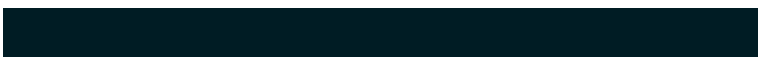
90A0C6



5A6163



0082A3



001C24

Previews

White Background



This preview shows how the Hex color C69B90 looks on a white background.

Color Contrast Check

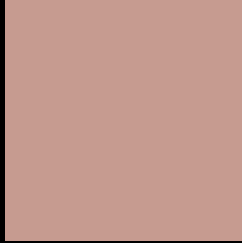
Large Text (above 18pt) WCAG AA × Fail

Any Text WCAG AA × Fail

Large Text (above 18pt) WCAG AAA × Fail

Any Text WCAG AAA × Fail

Black Background



This preview shows how the Hex color C69B90 looks on a black background.

Color Contrast Check

Large Text (above 18pt) WCAG AA ✓ Pass

Any Text WCAG AA ✓ Pass

Large Text (above 18pt) WCAG AAA ✓ Pass

Any Text WCAG AAA ✓ Pass

If you want to check with other color combinations, try the [Color Contrast Checker](#).

Hex C69B90 Background



This preview shows how black text looks on a background with the Hex color C69B90.

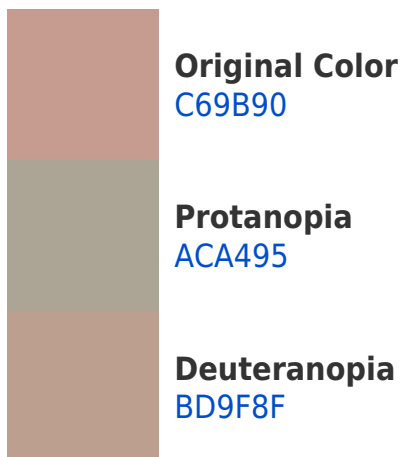


This preview shows how white text looks on a background with the Hex color C69B90.

Color Blindness Simulation

Color vision deficiency is a very complex topic, and I could not describe the different causes any better than Wikipedia does, so if you want to learn more, you should check out their [article about color blindness](#).

Dichromacy





Tritanopia
C898A4

Trichromacy



Original Color
C69B90

Protanomaly
B5A193

Deuteranomaly
C09E8F

Tritanomaly
C7999D

Monochromacy



Original Color
C69B90

Achromatopsia
A7A7A7

Achromatomaly
B2A39F

CSS Examples

Text

The CSS property to change the color of the text to Hex C69B90 is called "color". The color property can be set on classes, ids or directly on the HTML element.

This example shows how text in the color #C69B90 looks like.

```
.text, #text, p{  
    color:#C69B90  
}
```

If you want to add a text shadow in that color use the text-shadow property, you can generate a text shadow directly with our [CSS Text Shadow Generator](#).

Here you see how black text with a 4 pixel #C69B90 colored shadow looks like.

```
.shadow{ text-shadow: 4px 4px 2px #C69B90
}
```

Border

The CSS property to change the border of an element to Hex C69B90 is called "border". The border property can be set on classes, ids or directly on the HTML element.

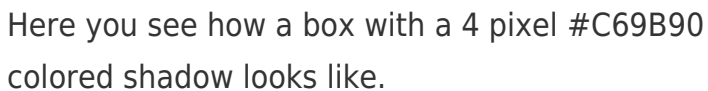
This example shows the color as border, it can be applied via the CSS property "border" or "border-color".

```
.border, #border, table{ border:4px solid
#C69B90 }
```

If only the border color should be changed use the property `border-color`.

```
.border{ border-color:#C69B90 }
```

If you want to add a box shadow in that color use:



Here you see how a box with a 4 pixel #C69B90 colored shadow looks like.

```
.boxshadow{ -moz-box-shadow:4px 4px 4px  
4px #C69B90; -webkit-box-shadow:4px 4px  
4px 4px #C69B90; box-shadow:4px 4px 4px  
4px #C69B90 }
```

Background

The CSS property to change the background color of an element to Hex C69B90 is called "background". The background property can be set on classes, ids or directly on the HTML element.

```
.background, #background, body{  
background:#C69B90 }
```

If only the background color should be changed can be used:

```
.background{ background-color:#C69B90 }
```

This example shows the color as background, it is applied via the CSS property "background".

To optimize and compress your CSS code, you can use our [online CSS compressor and optimizer](#) based on csstidy. If you want to create a linear or radial gradient as background or border, check our [CSS Gradient Generator](#).

Hey! You found this booklet interesting? Support Converting Colors with the new Membership Option!

The pro membership hides all ads, plus gives you double the colors in the color bucket, and more awesome pro features!

[Learn more, Memberships starting at \\$2.50/m!](#)

**Follow me
on Twitter!**

@ConvertingColor