

# Converting Colors

Hex(C69F8D)

Have a look what the booklet for  
Hex(C69F8D) contains.

<b>Hex(C69F8D)</b> .....	3
<i><b>Conversions</b></i> .....	4
<i><b>Details</b></i> .....	6
<i><b>Harmonies</b></i> .....	11
<i><b>Previews</b></i> .....	23
<i><b>Color Blindness Simulation</b></i> .....	26
<i><b>CSS Examples</b></i> .....	29

**Color**

**Hex(C69F8D)**

# Conversions

## Conversions Part 1

Format	Color
Hex	C69F8D
RGB	198, 159, 141
RGB Percent	78%, 62%, 55%
CMY	0.2235, 0.3765, 0.4471
CMYK	0.00, 0.20, 0.29, 0.22
HSL	19°, 33%, 66%
HSV	19°, 29%, 78%
XYZ	40.4946, 38.7251, 30.5397
YIQ	168.6090, 29.0220, 2.6700

# Conversions

## Conversions Part 2

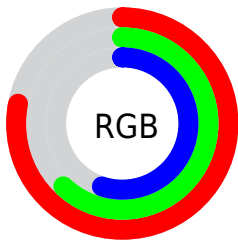
Format	Color
<a href="#">RYB</a>	<a href="#">198, 167, 141</a>
Decimal	<a href="#">13016973</a>
CIELab	<a href="#">68.55, 11.79, 14.86</a>
CIElCh	<a href="#">69, 18.967, 51.584</a>
Yxy	<a href="#">38.7251, 0.3689, 0.3528</a>
Android (android.graphics.Color)	<a href="#">4291207053 (0xFFC69F8D)</a>
YUV	<a href="#">168.6090, -13.6112, 25.7759</a>
Hunter-Lab	<a href="#">62.2295, 7.2535, 14.4636</a>

# Details

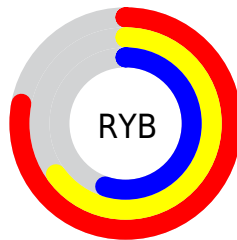
The Hex color **C69F8D** is a light color, and the websafe version is hex **CC9999**. A complement of this color would be **8DB4C6**, and the grayscale version is **A9A9A9**.

A 20% lighter version of the original color is **FFD6C3**, and **8F6C5B** is the 20% darker color. If you saturate the color by 10%, you get **C69179**, and if you desaturate by 10%, it is **C6ADA1**.

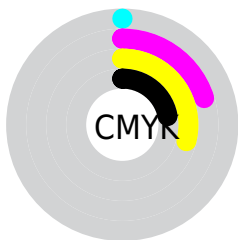
# Distribution



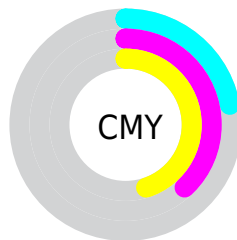
- Red (78%)
- Green (62%)
- Blue (55%)



- Red (78%)
- Yellow (65%)
- Blue (55%)



- Cyan (0%)
- Magenta (20%)
- Yellow (29%)
- Black (22%)



- Cyan (22%)
- Magenta (38%)
- Yellow (45%)

# Brightness & Saturation Gradients

These gradients show how the Hex color C69F8D changes by changing the brightness by 10 percent. The first figure shows a shift by +10% for each color and the second figure -10%.

Similar to the brightness gradients but the following saturation gradients show a change of the Hex color C69F8D by changing the saturation by 10% instead.



 C69F8D

 C69F8D

FFFFFF

 AA8573

 FFD6C3

 8F6C5B

 FFF2DF

 755343

 FFFFFB

 5B3C2D

 432618

 2C1100

 0E0000

 000000

 C69F8D

 C69F8D

 C69179

 C6ADA1

 C68465

 C6BAB5

 C67652

 C6C8C8

 C6693E

 C6D5DC

 C65B2A

 C6E3F0

 C64E16

 C6F0FF

 C64002

 C6FEFF

 C63F00

 C6FFFF

# Harmonies

## Analogous

The Analogous color harmony consists of three colors that are next to each other on the color wheel.



CB9C9B



C69F8D



B9A486

# Triad

The Triadic color harmony groups three colors that are evenly spaced from another and form a triangle on the color wheel.



C69F8D



82B1A2



A4A4C7

# Complementary

The Complementary color scheme is a pair of colors which are on the opposite of each other on the color wheel.



C69F8D



8DB4C6

# Split Complementary

Split-complementary colors differ from the complementary color scheme. The scheme consists of three colors, the original color and two neighbors of the complement color.



8DAAC9



C69F8D



79B1B3

# Square

The Square scheme is like the rectangle color scheme, but the four colors are evenly spaced on the color wheel.



C69F8D



94AE91



7DAFC1



B99FBD

# Rectangle

The Rectangle color scheme consists of four colors that form a rectangle on the color wheel.



C69F8D



AEA886



7DAFC1



9CA6C9



# Sweetspot

The Sweet Spot groups the original color and five complimentary colors.



C69F8D



FFEFE8



C68DB5



807671



000000



808080



# Same Dimension

The Same Dimension uses a secret algorithm to generate beautiful new colors.



C69F8D



FFC2A6



C6BB8D



635D5A



A33400



240B00

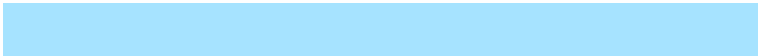


# Inverse Universe

The Inverse Universe completely reimagines the original color for something new.



8DB4C6



A6E3FF



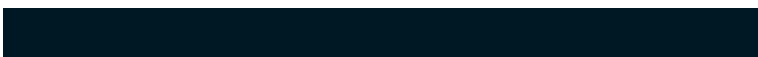
8D98C6



5A6063



0070A3



001824



# Previews

## White Background



This preview shows how the Hex color C69F8D looks on a white background.

## Color Contrast Check

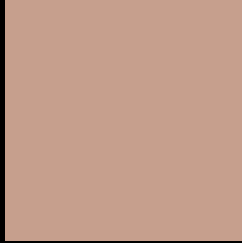
Large Text (above 18pt) WCAG AA × Fail

Any Text WCAG AA × Fail

Large Text (above 18pt) WCAG AAA × Fail

Any Text WCAG AAA × Fail

# Black Background



This preview shows how the Hex color C69F8D looks on a black background.

## Color Contrast Check

Large Text (above 18pt) WCAG AA ✓ Pass

Any Text WCAG AA ✓ Pass

Large Text (above 18pt) WCAG AAA ✓ Pass

Any Text WCAG AAA ✓ Pass

If you want to check with other color combinations, try the [Color Contrast Checker](#).



## Hex C69F8D Background



This preview shows how black text looks on a background with the Hex color C69F8D.



This preview shows how white text looks on a background with the Hex color C69F8D.

# Color Blindness Simulation

Color vision deficiency is a very complex topic, and I could not describe the different causes any better than Wikipedia does, so if you want to learn more, you should check out their [article about color blindness](#).

## Dichromacy



**Original Color**  
C69F8D

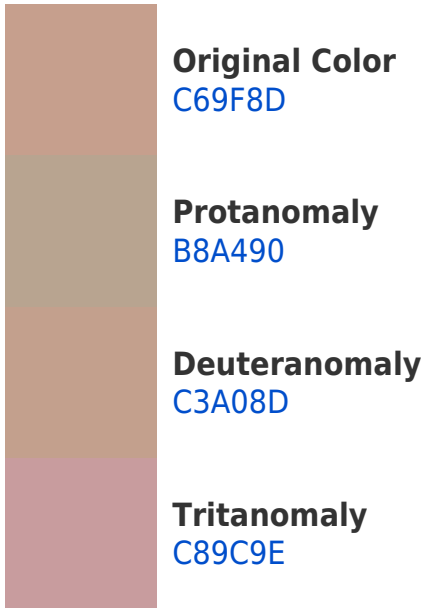
**Protanopia**  
B0A791

**Deuteranopia**  
C1A18D

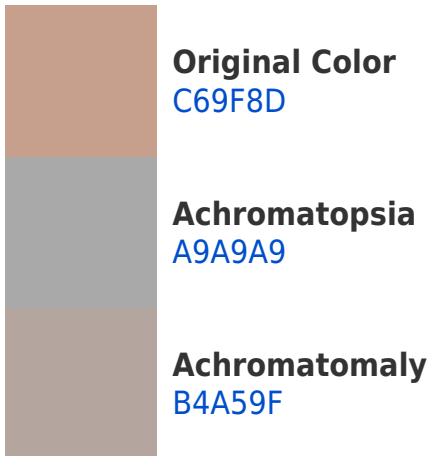


**Tritanopia**  
C99BA7

# Trichromacy



# Monochromacy



# CSS Examples

## Text

The CSS property to change the color of the text to Hex C69F8D is called "color". The color property can be set on classes, ids or directly on the HTML element.

This example shows how text in the color #C69F8D looks like.

```
.text, #text, p{  
    color:#C69F8D  
}
```

If you want to add a text shadow in that color use the text-shadow property, you can generate a text shadow directly with our [CSS Text Shadow Generator](#).

Here you see how black text with a 4 pixel #C69F8D colored shadow looks like.

```
.shadow{ text-shadow: 4px 4px 2px #C69F8D
}
```

## Border

The CSS property to change the border of an element to Hex C69F8D is called "border". The border property can be set on classes, ids or directly on the HTML element.

This example shows the color as border, it can be applied via the CSS property "border" or "border-color".

```
.border, #border, table{ border:4px solid
#C69F8D }
```

If only the border color should be changed use the property `border-color`.

```
.border{ border-color:#C69F8D }
```

If you want to add a box shadow in that color use:

Here you see how a box with a 4 pixel #C69F8D colored shadow looks like.

```
.boxshadow{ -moz-box-shadow:4px 4px 4px  
4px #C69F8D; -webkit-box-shadow:4px 4px  
4px 4px #C69F8D; box-shadow:4px 4px 4px  
4px #C69F8D }
```

# Background

The CSS property to change the background color of an element to Hex C69F8D is called "background". The background property can be set on classes, ids or directly on the HTML element.

```
.background, #background, body{  
background:#C69F8D }
```

If only the background color should be changed can be used:

```
.background{ background-color:#C69F8D }
```

This example shows the color as background, it is applied via the CSS property "background".

To optimize and compress your CSS code, you can use our [online CSS compressor and optimizer](#) based on csstidy. If you want to create a linear or radial gradient as background or border, check our [CSS Gradient Generator](#).



Hey! You found this booklet interesting? Support Converting Colors with the new Membership Option!

The pro membership hides all ads, plus gives you double the colors in the color bucket, and more awesome pro features!

**[Learn more, Memberships starting at \\$2.50/m!](#)**

**Follow me  
on Twitter!**

@ConvertingColor