

# Converting Colors

Hex(C6A071)

Have a look what the booklet for  
Hex(C6A071) contains.

<b>Hex(C6A071)</b> .....	3
<i><b>Conversions</b></i> .....	4
<i><b>Details</b></i> .....	6
<i><b>Harmonies</b></i> .....	11
<i><b>Previews</b></i> .....	23
<i><b>Color Blindness Simulation</b></i> .....	26
<i><b>CSS Examples</b></i> .....	29

# **Color**

**Hex(C6A071)**

# Conversions

## Conversions Part 1

<b>Format</b>	<b>Color</b>
Hex	C6A071
RGB	198, 160, 113
RGB Percent	78%, 63%, 44%
CMY	0.2235, 0.3725, 0.5569
CMYK	0.00, 0.19, 0.43, 0.22
HSL	33°, 43%, 61%
HSV	33°, 43%, 78%
XYZ	38.8401, 38.3396, 20.9760
YIQ	166.0040, 37.7350, -6.5610

# Conversions

## Conversions Part 2

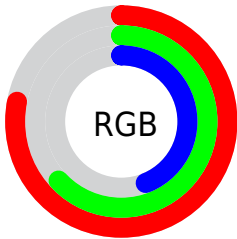
Format	Color
<a href="#">RYB</a>	<a href="#">182, 198, 113</a>
Decimal	<a href="#">13017201</a>
CIELab	<a href="#">68.27, 7.80, 29.78</a>
CIELCh	<a href="#">68, 30.789, 75.318</a>
Yxy	<a href="#">38.3396, 0.3957, 0.3906</a>
Android (android.graphics.Color)	<a href="#">4291207281 (0xFFC6A071)</a>
YUV	<a href="#">166.0040, -26.1310, 28.0605</a>
Hunter-Lab	<a href="#">61.9190, 3.6100, 23.2579</a>

# Details

The Hex color **C6A071** is a light color, and the websafe version is hex **CC9966**. A complement of this color would be **7197C6**, and the grayscale version is **A6A6A6**.

A 20% lighter version of the original color is **FFD7A5**, and **8E6D40** is the 20% darker color. If you saturate the color by 10%, you get **C6975D**, and if you desaturate by 10%, it is **C6A985**.

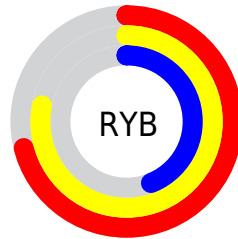
# Distribution



Red (78%)

Green (63%)

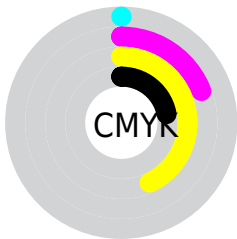
Blue (44%)



Red (71%)

Yellow (78%)

Blue (44%)

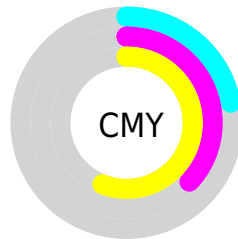


Cyan (0%)

Magenta (19%)

Yellow (43%)

Black (22%)



Cyan (22%)

Magenta (37%)

Yellow (56%)

# Brightness & Saturation Gradients

These gradients show how the Hex color C6A071 changes by changing the brightness by 10 percent. The first figure shows a shift by +10% for each color and the second figure -10%.

Similar to the brightness gradients but the following saturation gradients show a change of the Hex color C6A071 by changing the saturation by 10% instead.





C6A071



C6A071

FFFFFF



AA8658



FFD7A5



8E6D40



FFF3C1



735429



FFFFDD



593D13



FFFFF9



412700



281300



010000



000000



C6A071



C6A071

 C6975D

 C6A985

 C68E49

 C6B299

 C68536

 C6BBAC

 C67D22

 C6C3C0

 C6740E

 C6CCD4

 C66D00

 C6D5E8

 C6DEFC

 C6E7FF

 C6F0FF

# Harmonies

## Analogous

The Analogous color harmony consists of three colors that are next to each other on the color wheel.



D89780



C6A071



ABA970

# Triad

The Triadic color harmony groups three colors that are evenly spaced from another and form a triangle on the color wheel.



C6A071



50B6B4



BC9ACE

# Complementary

The Complementary color scheme is a pair of colors which are on the opposite of each other on the color wheel.



C6A071



7197C6

# Split Complementary

Split-complementary colors differ from the complementary color scheme. The scheme consists of three colors, the original color and two neighbors of the complement color.



97A4DC



C6A071



4EB3CD

# Square

The Square scheme is like the rectangle color scheme, but the four colors are evenly spaced on the color wheel.



C6A071



6BB597



6DADDC



D593B5

# Rectangle

The Rectangle color scheme consists of four colors that form a rectangle on the color wheel.



C6A071



97AE78



6DADDC



B19ED4

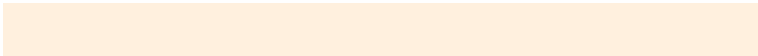


# Sweetspot

The Sweet Spot groups the original color and five complimentary colors.



C6A071



FFF0DE



C67197



80766B



000000



808080



# Same Dimension

The Same Dimension uses a secret algorithm to generate beautiful new colors.



C6A071



FFC47A



C2C671



635F5A



A35A00



241400

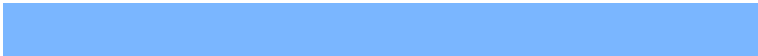


# Inverse Universe

The Inverse Universe completely reimagines the original color for something new.



7197C6



7AB6FF



7571C6



5A5E63



0049A3

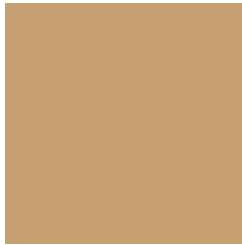


001024



# Previews

## White Background



This preview shows how the Hex color C6A071 looks on a white background.

## Color Contrast Check

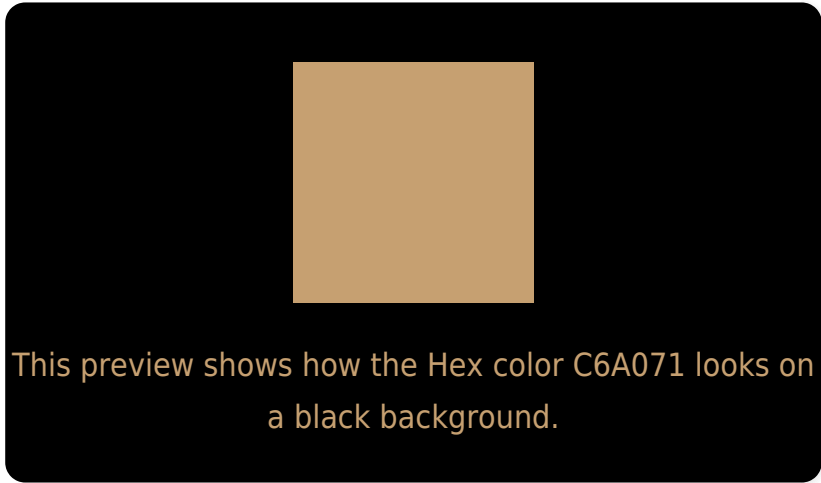
Large Text (above 18pt) WCAG AA × Fail

Any Text WCAG AA × Fail

Large Text (above 18pt) WCAG AAA × Fail

Any Text WCAG AAA × Fail

# Black Background



## Color Contrast Check

Large Text (above 18pt) WCAG AA ✓ Pass

Any Text WCAG AA ✓ Pass

Large Text (above 18pt) WCAG AAA ✓ Pass

Any Text WCAG AAA ✓ Pass

If you want to check with other color combinations, try the [Color Contrast Checker](#).



## Hex C6A071 Background



This preview shows how black text looks on a background with the Hex color C6A071.



This preview shows how white text looks on a background with the Hex color C6A071.

# Color Blindness Simulation

Color vision deficiency is a very complex topic, and I could not describe the different causes any better than Wikipedia does, so if you want to learn more, you should check out their [article about color blindness](#).

## Dichromacy



**Original Color**  
C6A071

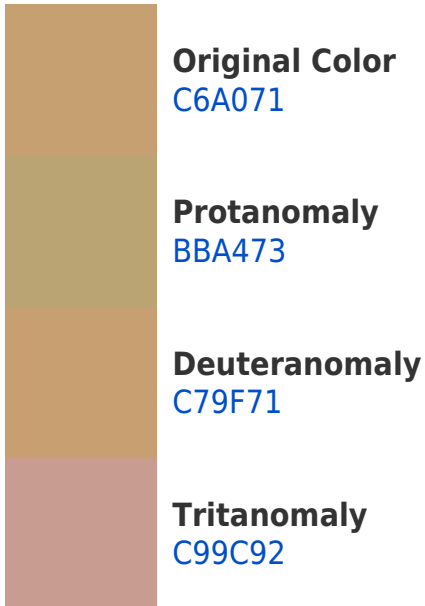
**Protanopia**  
B4A774

**Deuteranopia**  
C79F71

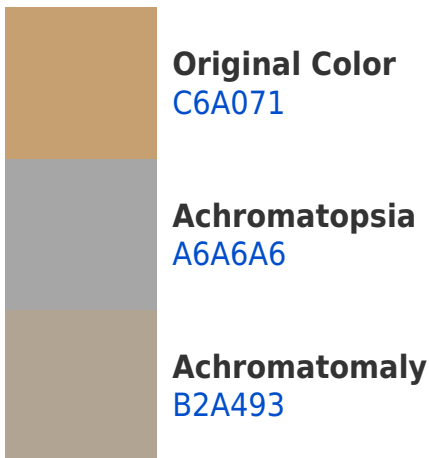


**Tritanopia**  
CB99A5

# Trichromacy



# Monochromacy



# CSS Examples

## Text

The CSS property to change the color of the text to Hex C6A071 is called "color". The color property can be set on classes, ids or directly on the HTML element.

This example shows how text in the color #C6A071 looks like.

```
.text, #text, p{  
    color:#C6A071  
}
```

If you want to add a text shadow in that color use the text-shadow property, you can generate a text shadow directly with our [CSS Text Shadow Generator](#).

Here you see how black text with a 4 pixel #C6A071 colored shadow looks like.

```
.shadow{ text-shadow: 4px 4px 2px #C6A071
}
```

## Border

The CSS property to change the border of an element to Hex C6A071 is called "border". The border property can be set on classes, ids or directly on the HTML element.

This example shows the color as border, it can be applied via the CSS property "border" or "border-color".

```
.border, #border, table{ border:4px solid
#C6A071 }
```

If only the border color should be changed use the property `border-color`.

```
.border{ border-color:#C6A071 }
```

If you want to add a box shadow in that color use:

Here you see how a box with a 4 pixel #C6A071 colored shadow looks like.

```
.boxshadow{ -moz-box-shadow:4px 4px 4px  
4px #C6A071; -webkit-box-shadow:4px 4px  
4px 4px #C6A071; box-shadow:4px 4px 4px  
4px #C6A071 }
```

# Background

The CSS property to change the background color of an element to Hex C6A071 is called "background". The background property can be set on classes, ids or directly on the HTML element.

```
.background, #background, body{  
background:#C6A071 }
```

If only the background color should be changed can be used:

```
.background{ background-color:#C6A071 }
```

This example shows the color as background, it is applied via the CSS property "background".

To optimize and compress your CSS code, you can use our [online CSS compressor and optimizer](#) based on csstidy. If you want to create a linear or radial gradient as background or border, check our [CSS Gradient Generator](#).



Hey! You found this booklet interesting? Support Converting Colors with the new Membership Option!

The pro membership hides all ads, plus gives you double the colors in the color bucket, and more awesome pro features!

**[Learn more, Memberships starting at \\$2.50/m!](#)**

**Follow me  
on Twitter!**

@ConvertingColor