

Converting Colors

Hex(C6A3A9)

Have a look what the booklet for
Hex(C6A3A9) contains.

Hex(C6A3A9)	3
<i>Conversions</i>	4
<i>Details</i>	6
<i>Harmonies</i>	11
<i>Previews</i>	23
<i>Color Blindness Simulation</i>	26
<i>CSS Examples</i>	29

Color

Hex(C6A3A9)

Conversions

Conversions Part 1

Format	Color
Hex	C6A3A9
RGB	198, 163, 169
RGB Percent	78%, 64%, 66%
CMY	0.2235, 0.3608, 0.3373
CMYK	0.00, 0.18, 0.15, 0.22
HSL	350°, 23%, 71%
HSV	350°, 18%, 78%
XYZ	43.5473, 41.0647, 43.1672
YIQ	174.1490, 18.9340, 9.2860

Conversions

Conversions Part 2

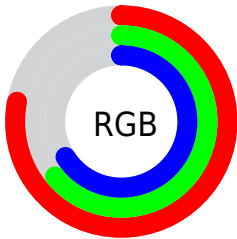
Format	Color
RYB	198, 163, 169
Decimal	13018025
CIELab	70.22, 13.82, 1.73
CIELCh	70, 13.923, 7.149
Yxy	41.0647, 0.3408, 0.3214
Android (android.graphics.Color)	4291208105 (0xFFC6A3A9)
YUV	174.1490, -2.5385, 20.9173
Hunter-Lab	64.0818, 9.1582, 4.9179

Details

The Hex color **C6A3A9** is a light color, and the websafe version is hex **CC9999**. A complement of this color would be **A3C6C0**, and the grayscale version is **AEAEAE**.

A 20% lighter version of the original color is **FFDAE0**, and **906F75** is the 20% darker color. If you saturate the color by 10%, you get **C68F99**, and if you desaturate by 10%, it is **C6B7B9**.

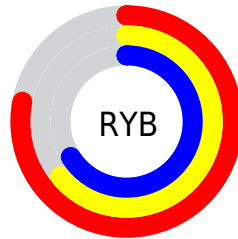
Distribution



Red (78%)

Green (64%)

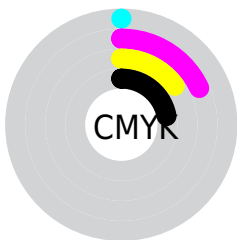
Blue (66%)



Red (78%)

Yellow (64%)

Blue (66%)

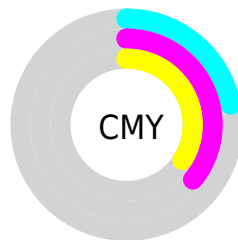


Cyan (0%)

Magenta (18%)

Yellow (15%)

Black (22%)



Cyan (22%)

Magenta (36%)

Yellow (34%)

Brightness & Saturation Gradients

These gradients show how the Hex color C6A3A9 changes by changing the brightness by 10 percent. The first figure shows a shift by +10% for each color and the second figure -10%.

Similar to the brightness gradients but the following saturation gradients show a change of the Hex color C6A3A9 by changing the saturation by 10% instead.



C6A3A9



C6A3A9

FFFFFF



AB898F



FFDAE0



906F75



FFF7FD



76575C



5D3F45



45292F



2E141A



1C0000



000000



C6A3A9



C6A3A9

 C68F99

 C6B7B9

 C67B88

 C6CBCA

 C66878

 C6DEDA

 C65467

 C6F2EB

 C64057

 C6FFFB

 C62C47

 C6FFFF

 C61836

 C60526

 C60022

Harmonies

Analogous

The Analogous color harmony consists of three colors that are next to each other on the color wheel.



BFA4B6



C6A3A9



C6A49D

Triad

The Triadic color harmony groups three colors that are evenly spaced from another and form a triangle on the color wheel.



C6A3A9



A4B097



93B0C3

Complementary

The Complementary color scheme is a pair of colors which are on the opposite of each other on the color wheel.



C6A3A9



A3C6C0

Split Complementary

Split-complementary colors differ from the complementary color scheme. The scheme consists of three colors, the original color and two neighbors of the complement color.



8CB2BA



C6A3A9



97B2A1

Square

The Square scheme is like the rectangle color scheme, but the four colors are evenly spaced on the color wheel.



C6A3A9



B3AC93



8DB3AE



A2ACC5

Rectangle

The Rectangle color scheme consists of four colors that form a rectangle on the color wheel.



C6A3A9



C2A697



8DB3AE



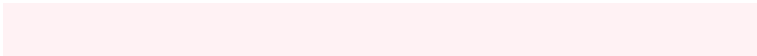
90B1C0

Sweetspot

The Sweet Spot groups the original color and five complimentary colors.



C6A3A9



FFF2F4



C0A3C6



807879



000000



808080

Same Dimension

The Same Dimension uses a secret algorithm to generate beautiful new colors.



C6A3A9



FFC9D3



C6AEA3



635A5B



A3001C



240006

Inverse Universe

The Inverse Universe completely reimagines the original color for something new.



C6A3A9



FFC9D3



A3BBC6



635A5B



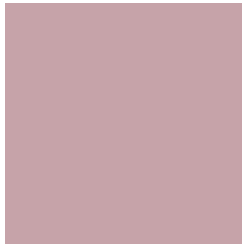
A3001C



240006

Previews

White Background



This preview shows how the Hex color C6A3A9 looks on a white background.

Color Contrast Check

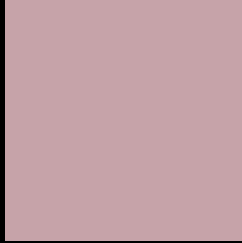
Large Text (above 18pt) WCAG AA × Fail

Any Text WCAG AA × Fail

Large Text (above 18pt) WCAG AAA × Fail

Any Text WCAG AAA × Fail

Black Background



This preview shows how the Hex color C6A3A9 looks on a black background.

Color Contrast Check

Large Text (above 18pt) WCAG AA ✓ Pass

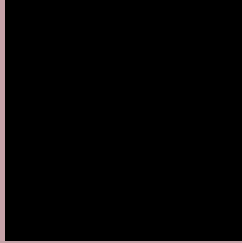
Any Text WCAG AA ✓ Pass

Large Text (above 18pt) WCAG AAA ✓ Pass

Any Text WCAG AAA ✓ Pass

If you want to check with other color combinations, try the [Color Contrast Checker](#).

Hex C6A3A9 Background



This preview shows how black text looks on a background with the Hex color C6A3A9.

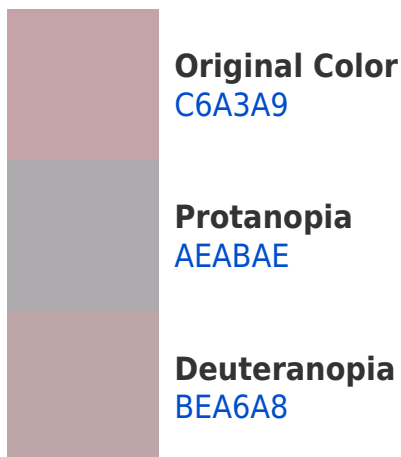


This preview shows how white text looks on a background with the Hex color C6A3A9.

Color Blindness Simulation

Color vision deficiency is a very complex topic, and I could not describe the different causes any better than Wikipedia does, so if you want to learn more, you should check out their [article about color blindness](#).

Dichromacy





Tritanopia
C7A2AF

Trichromacy



Original Color
C6A3A9

Protanomaly
B7A8AC

Deuteranomaly
C1A5A8

Tritanomaly
C7A2AD

Monochromacy



Original Color
C6A3A9

Achromatopsia
AEAEAE

Achromatomaly
B7AAAC

CSS Examples

Text

The CSS property to change the color of the text to Hex C6A3A9 is called "color". The color property can be set on classes, ids or directly on the HTML element.

This example shows how text in the color #C6A3A9 looks like.

```
.text, #text, p{  
    color:#C6A3A9  
}
```

If you want to add a text shadow in that color use the text-shadow property, you can generate a text shadow directly with our [CSS Text Shadow Generator](#).

Here you see how black text with a 4 pixel #C6A3A9 colored shadow looks like.

```
.shadow{ text-shadow: 4px 4px 2px #C6A3A9
}
```

Border

The CSS property to change the border of an element to Hex C6A3A9 is called "border". The border property can be set on classes, ids or directly on the HTML element.

This example shows the color as border, it can be applied via the CSS property "border" or "border-color".

```
.border, #border, table{ border:4px solid
#C6A3A9 }
```

If only the border color should be changed use the property `border-color`.

```
.border{ border-color:#C6A3A9 }
```

If you want to add a box shadow in that color use:

Here you see how a box with a 4 pixel #C6A3A9 colored shadow looks like.

```
.boxshadow{ -moz-box-shadow:4px 4px 4px  
4px #C6A3A9; -webkit-box-shadow:4px 4px  
4px 4px #C6A3A9; box-shadow:4px 4px 4px  
4px #C6A3A9 }
```

Background

The CSS property to change the background color of an element to Hex C6A3A9 is called "background". The background property can be set on classes, ids or directly on the HTML element.

```
.background, #background, body{  
background:#C6A3A9 }
```

If only the background color should be changed can be used:

```
.background{ background-color:#C6A3A9 }
```

This example shows the color as background, it is applied via the CSS property "background".

To optimize and compress your CSS code, you can use our [online CSS compressor and optimizer](#) based on csstidy. If you want to create a linear or radial gradient as background or border, check our [CSS Gradient Generator](#).

Hey! You found this booklet interesting? Support Converting Colors with the new Membership Option!

The pro membership hides all ads, plus gives you double the colors in the color bucket, and more awesome pro features!

[Learn more, Memberships starting at \\$2.50/m!](#)

**Follow me
on Twitter!**

@ConvertingColor