

Converting Colors

Hex(C6A596)

Have a look what the booklet for
Hex(C6A596) contains.

Hex(C6A596)	3
<i>Conversions</i>	4
<i>Details</i>	6
<i>Harmonies</i>	11
<i>Previews</i>	23
<i>Color Blindness Simulation</i>	26
<i>CSS Examples</i>	29

Color

Hex(C6A596)

Conversions

Conversions Part 1

Format	Color
Hex	C6A596
RGB	198, 165, 150
RGB Percent	78%, 65%, 59%
CMY	0.2235, 0.3529, 0.4118
CMYK	0.00, 0.17, 0.24, 0.22
HSL	19°, 30%, 68%
HSV	19°, 24%, 78%
XYZ	42.2489, 41.1180, 34.5640
YIQ	173.1570, 24.4830, 2.3310

Conversions

Conversions Part 2

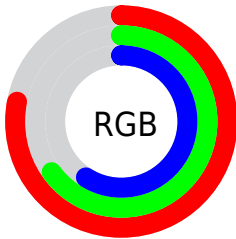
Format	Color
RYB	198, 172, 150
Decimal	13018518
CIELab	70.26, 9.78, 12.29
CIELCh	70, 15.709, 51.473
Yxy	41.1180, 0.3583, 0.3487
Android (android.graphics.Color)	4291208598 (0xFFC6A596)
YUV	173.1570, -11.4164, 21.7873
Hunter-Lab	64.1234, 5.3922, 12.9277

Details

The Hex color **C6A596** is a light color, and the websafe version is hex **CC9999**. A complement of this color would be **96B7C6**, and the grayscale version is **ADADAD**.

A 20% lighter version of the original color is **FFDCCC**, and **8F7163** is the 20% darker color. If you saturate the color by 10%, you get **C69782**, and if you desaturate by 10%, it is **C6B3AA**.

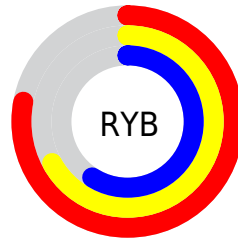
Distribution



Red (78%)

Green (65%)

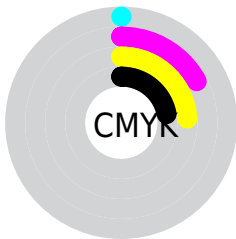
Blue (59%)



Red (78%)

Yellow (67%)

Blue (59%)

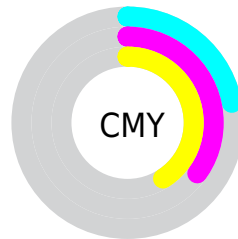


Cyan (0%)

Magenta (17%)

Yellow (24%)

Black (22%)



Cyan (22%)

Magenta (35%)

Yellow (41%)

Brightness & Saturation Gradients

These gradients show how the Hex color C6A596 changes by changing the brightness by 10 percent. The first figure shows a shift by +10% for each color and the second figure -10%.

Similar to the brightness gradients but the following saturation gradients show a change of the Hex color C6A596 by changing the saturation by 10% instead.

 C6A596

 C6A596

FFFFFF

 AA8B7C

 FFDCCC

 8F7163

 FFF9E8

 75594B

 5C4135

 442B1F

 2D1608

 160000

 000000

 C6A596

 C6A596

 C69782

 C6B3AA

 C68A6E

 C6C0BE

 C67C5B

 C6CED1

 C66F47

 C6DBE5

 C66133

 C6E9F9

 C6531F

 C6F7FF

 C6460B

 C6FFFF

 C63E00

Harmonies

Analogous

The Analogous color harmony consists of three colors that are next to each other on the color wheel.



CAA2A2



C6A596



BBA990

Triad

The Triadic color harmony groups three colors that are evenly spaced from another and form a triangle on the color wheel.



C6A596



8EB4A7



A9AAC6

Complementary

The Complementary color scheme is a pair of colors which are on the opposite of each other on the color wheel.



C6A596



96B7C6

Split Complementary

Split-complementary colors differ from the complementary color scheme. The scheme consists of three colors, the original color and two neighbors of the complement color.



97AEC8



C6A596



87B4B6

Square

The Square scheme is like the rectangle color scheme, but the four colors are evenly spaced on the color wheel.



C6A596



9CB29A



8AB2C2



BAA5BE

Rectangle

The Rectangle color scheme consists of four colors that form a rectangle on the color wheel.



C6A596



B1AD90



8AB2C2



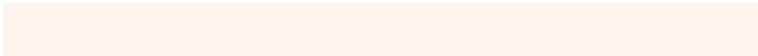
A3ABC8

Sweetspot

The Sweet Spot groups the original color and five complimentary colors.



C6A596



FFF3ED



C696B8



807875



000000



808080

Same Dimension

The Same Dimension uses a secret algorithm to generate beautiful new colors.



C6A596



FFCCB5



C6BC96



635D5A



A33300



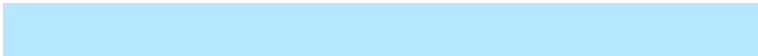
240B00

Inverse Universe

The Inverse Universe completely reimagines the original color for something new.



96B7C6



B5E8FF



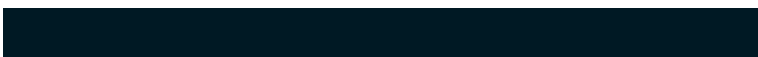
96A0C6



5A6063



0070A3



001924

Previews

White Background



This preview shows how the Hex color C6A596 looks on a white background.

Color Contrast Check

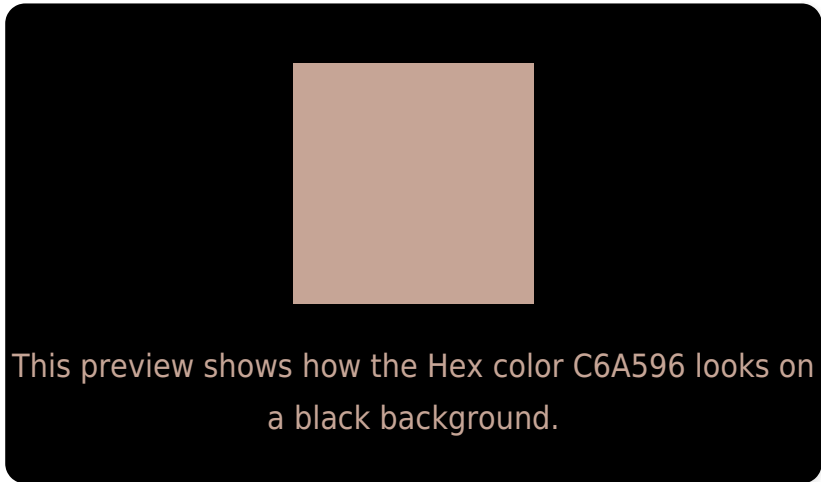
Large Text (above 18pt) WCAG AA × Fail

Any Text WCAG AA × Fail

Large Text (above 18pt) WCAG AAA × Fail

Any Text WCAG AAA × Fail

Black Background



Color Contrast Check

Large Text (above 18pt) WCAG AA ✓ Pass

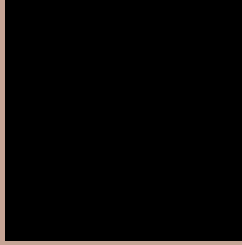
Any Text WCAG AA ✓ Pass

Large Text (above 18pt) WCAG AAA ✓ Pass

Any Text WCAG AAA ✓ Pass

If you want to check with other color combinations, try the [Color Contrast Checker](#).

Hex C6A596 Background



This preview shows how black text looks on a background with the Hex color C6A596.

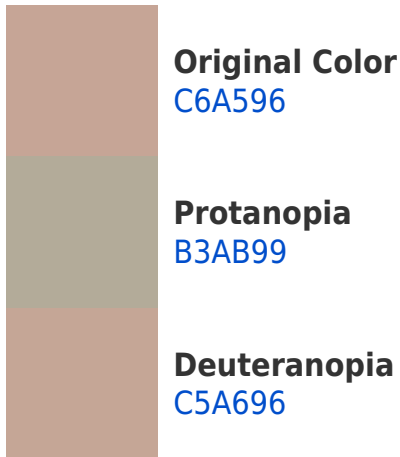


This preview shows how white text looks on a background with the Hex color C6A596.

Color Blindness Simulation

Color vision deficiency is a very complex topic, and I could not describe the different causes any better than Wikipedia does, so if you want to learn more, you should check out their [article about color blindness](#).

Dichromacy





Tritanopia
C9A1AE

Trichromacy



Original Color
C6A596

Protanomaly
BAA998

Deuteranomaly
C5A696

Tritanomaly
C8A2A5

Monochromacy



Original Color
C6A596

Achromatopsia
ADADAD

Achromatomaly
B6AAA5

CSS Examples

Text

The CSS property to change the color of the text to Hex C6A596 is called "color". The color property can be set on classes, ids or directly on the HTML element.

This example shows how text in the color #C6A596 looks like.

```
.text, #text, p{  
    color:#C6A596  
}
```

If you want to add a text shadow in that color use the text-shadow property, you can generate a text shadow directly with our [CSS Text Shadow Generator](#).

Here you see how black text with a 4 pixel #C6A596 colored shadow looks like.

```
.shadow{ text-shadow: 4px 4px 2px #C6A596
}
```

Border

The CSS property to change the border of an element to Hex C6A596 is called "border". The border property can be set on classes, ids or directly on the HTML element.

This example shows the color as border, it can be applied via the CSS property "border" or "border-color".

```
.border, #border, table{ border:4px solid
#C6A596 }
```

If only the border color should be changed use the property `border-color`.

```
.border{ border-color:#C6A596 }
```

If you want to add a box shadow in that color use:

Here you see how a box with a 4 pixel #C6A596 colored shadow looks like.

```
.boxshadow{ -moz-box-shadow:4px 4px 4px  
4px #C6A596; -webkit-box-shadow:4px 4px  
4px 4px #C6A596; box-shadow:4px 4px 4px  
4px #C6A596 }
```

Background

The CSS property to change the background color of an element to Hex C6A596 is called "background". The background property can be set on classes, ids or directly on the HTML element.

```
.background, #background, body{  
background:#C6A596 }
```

If only the background color should be changed can be used:

```
.background{ background-color:#C6A596 }
```

This example shows the color as background, it is applied via the CSS property "background".

To optimize and compress your CSS code, you can use our [online CSS compressor and optimizer](#) based on csstidy. If you want to create a linear or radial gradient as background or border, check our [CSS Gradient Generator](#).

Hey! You found this booklet interesting? Support Converting Colors with the new Membership Option!

The pro membership hides all ads, plus gives you double the colors in the color bucket, and more awesome pro features!

[Learn more, Memberships starting at \\$2.50/m!](#)

**Follow me
on Twitter!**

@ConvertingColor